

# Campbell Park Playground Improvements

2<sup>nd</sup> Meeting 9.17.2022



**Tempe**

Making waves in the desert



Cara Kamienski, Capital Improvement  
Program Project Coordinator

City of Tempe Parks and Recreation

[Cara\\_Kamienski@tempe.gov](mailto:Cara_Kamienski@tempe.gov)  
(480)350-5681





# Campbell Park Improvements



- Renovated playground
- Two new 20' x 20' picnic ramadas or one new 24'x34' ramada
- Volleyball court lighting
- Play area rubberized surface
- New sidewalks, lighting, landscape, and trees



# Overall Campbell Site

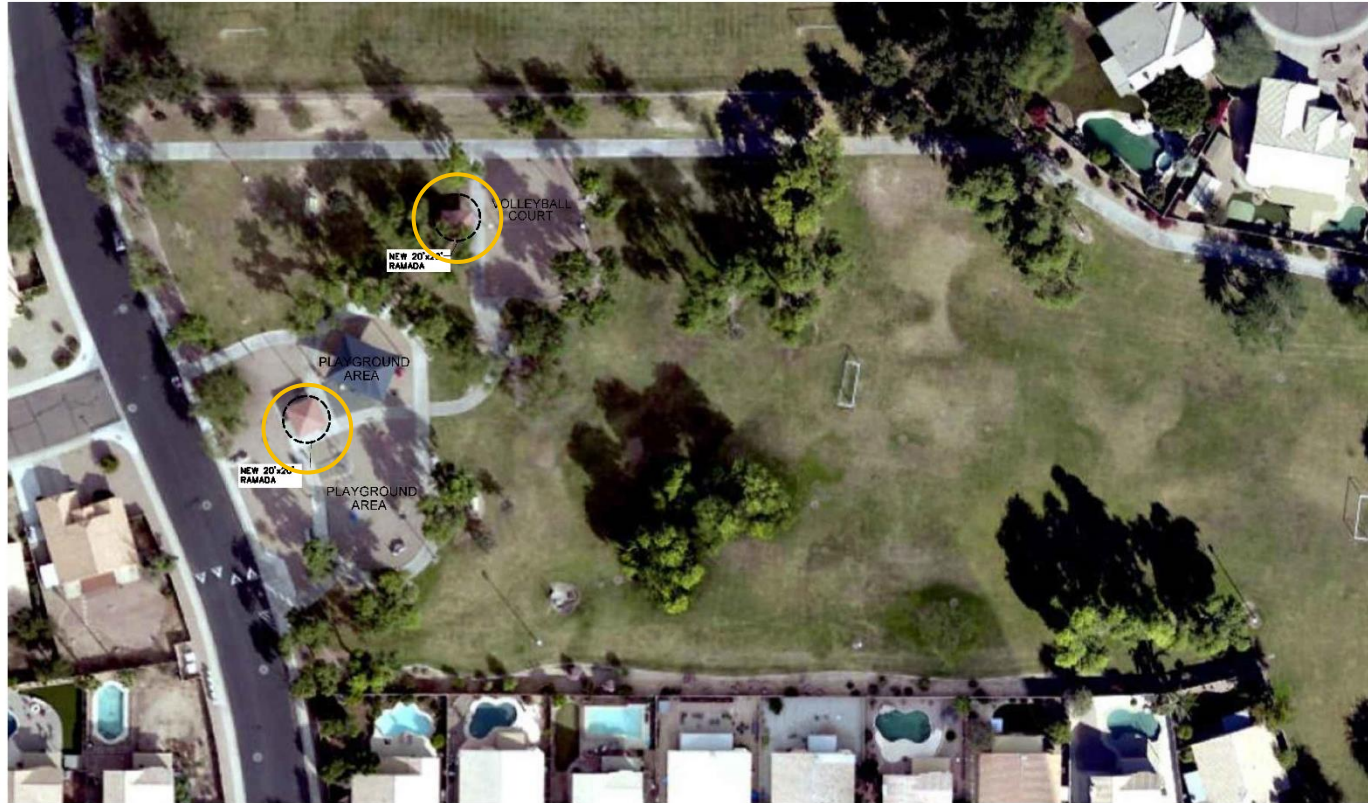


CAMPBELL PARK SITE PLAN





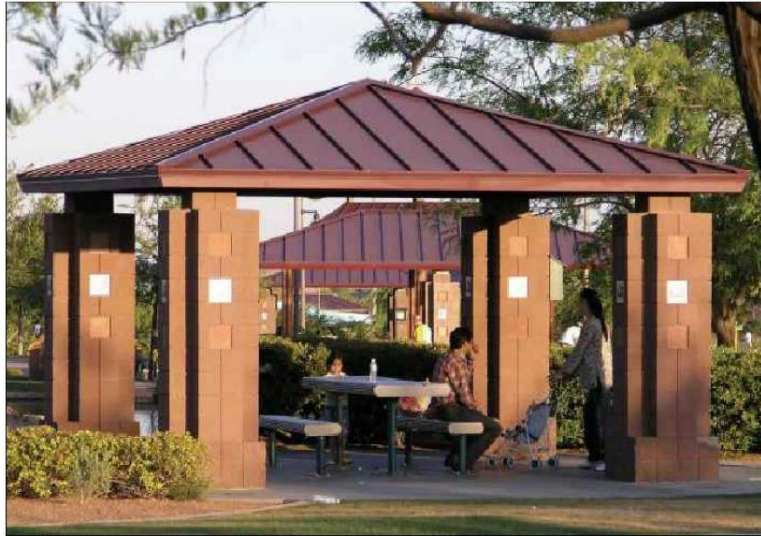
# 2 New 20'x 20' Renovated Ramada Locations



CAMPBELL PARK RAMADA LOCATIONS



# Ramada Finish Tie-breaker: Top 2 Selections



NOTCHED CMU BLOCK FINISH



METAL POST FINISH

PICNIC RAMADA FINISH OPTIONS





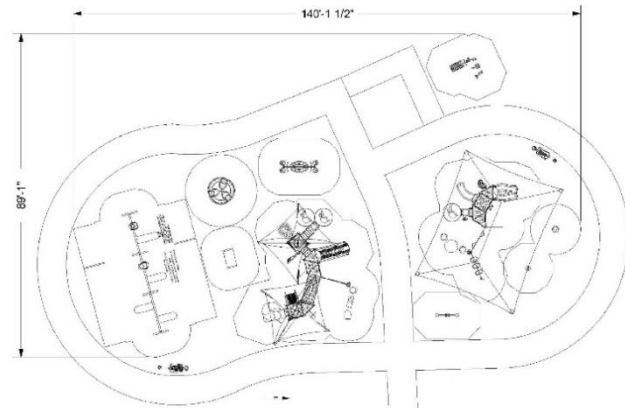
- Campbell's Top 5 Playground Equipment Selections:

1. Arch Swings
2. Fitness Station
3. Spinners
4. Musical Equipment
5. Seesaw



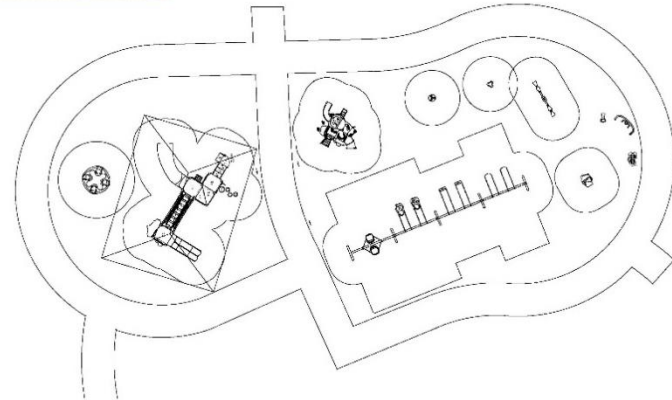


# Playground Layout Selection: OPTION A





# Playground Layout Selection: OPTION B

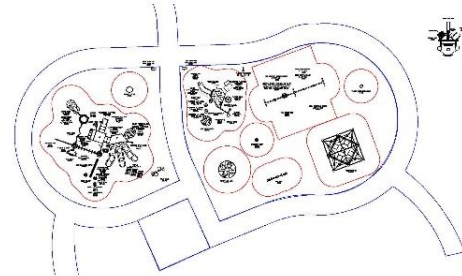


# ● Playground Layout Selection: OPTION C





# Playground Layout Selection: OPTION D







# How do I give my input?

Visit:

[tempe.gov/ParkUpdates](https://tempe.gov/ParkUpdates)

Find Campbell Park and click on the survey.



# Questions?



Cara Kamienski

Capital Improvement Program Project Coordinator

(480)350-5681

[Cara\\_Kamienski@tempe.gov](mailto:Cara_Kamienski@tempe.gov)

Shauna Warner

Neighborhood Services Director

(480)350-8883

[Shauna\\_Warner@tempe.gov](mailto:Shauna_Warner@tempe.gov)

