



GRASS CLIPPINGS at ROLLING HILLS

MODERNIZING GOLF

PRESENTATION OUTLINE

1. Vision
 - a. Quality & Layout
 - b. Night Play
 - c. Food & Beverage
 - d. Family Activity Lawn
2. Conceptual Plan
3. Turf Reduction
4. New Golf Boundary
5. Excess Property
6. Sustainability Suggestions
7. Questions or Comments

ROLLING HILLS

TEMPE, ARIZONA



ESPIRITU LOCI
The Spirit of the Place

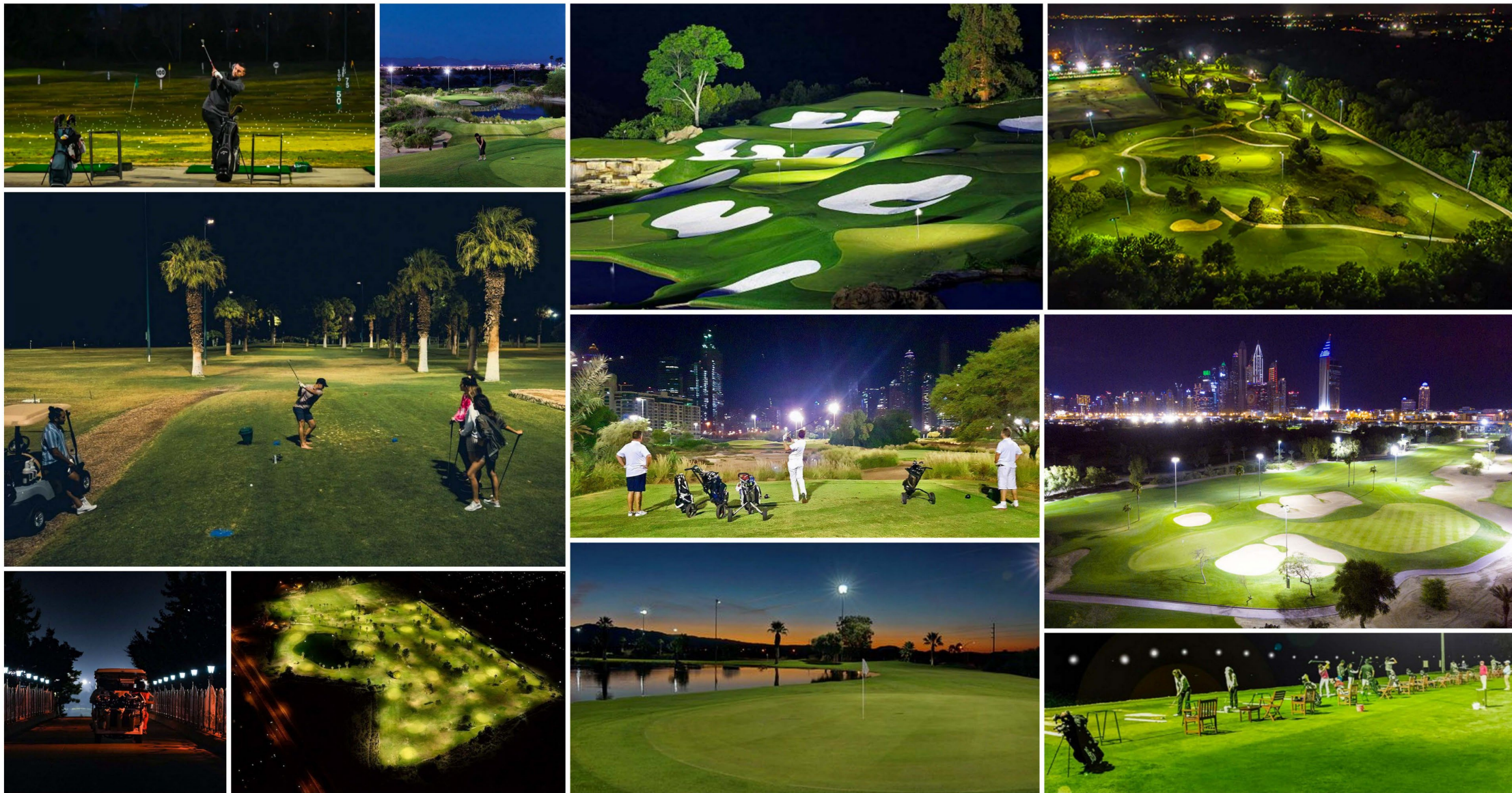
The information contained in this graphic has been supplied in whole or in part by the Client and/or their consultants and may have been obtained in whole or in part at the request of the Client. The drawings and photos depicted herein are conceptual only and do not intend to represent final architecture, planning, or design concepts. We do not represent, warrant, or guarantee that such information is true or that it accurately reflects existing or future development.

QUALITY & LAYOUT 1a

13
JUN
2022

ROLLING HILLS

TEMPE, ARIZONA



NTS

ESPIRITU LOCI
The Spirit of the Place

The information contained in this graphic has been supplied in whole or in part by the Client and/or their consultants and may have been altered in whole or in part at the request of the Client. The drawings and information depicted herein are conceptual only and are not intended to represent final architecture, planning, or design concepts. We do not represent, warrant, or guarantee that such information is true or that it accurately reflects existing or future development.

NIGHT PLAY 1b

13 JUN
2022

ROLLING HILLS

TEMPE, ARIZONA



INTS

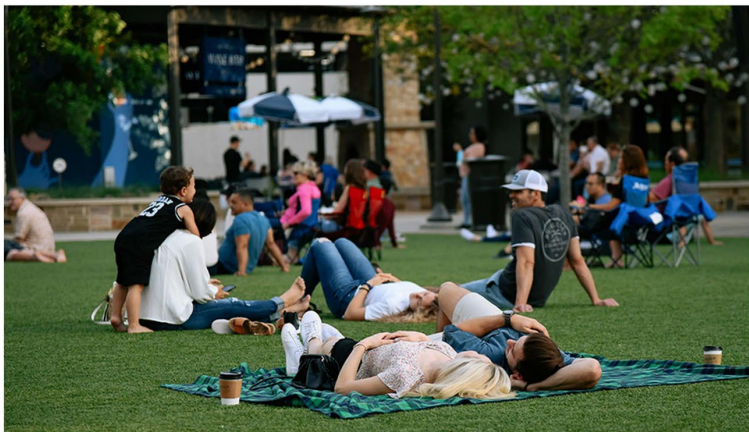
ESPIRITU LOCI
The Spirit of the Place

The information contained in this graphic has been supplied in whole or in part by the Client and/or their consultants and may have been obtained in whole or in part at the request of the Client. The drawings and information depicted herein are conceptual only and do not intend to represent final architecture, planning, or design concepts. We do not represent, warrant, or guarantee that such information is true or that it accurately reflects existing or future development.

FOOD & BEVERAGE 1c

10 JUN 2022

ROLLING HILLS TEMPE, ARIZONA



INTS

ESPIRITU LOCI
The Spirit of the Place

The information presented in this graphic has been supplied in whole or in part by the Client and/or their consultants and may have been obtained in whole or in part at the request of the Client. The drawings and photos as depicted herein are conceptual only and are not intended to represent final architecture, planning, or design concepts. We do not represent, warrant, or guarantee that such information is true or that it accurately reflects existing or a future development.

FAMILY ACTIVITY LAWN 1d

10
JUN
2022





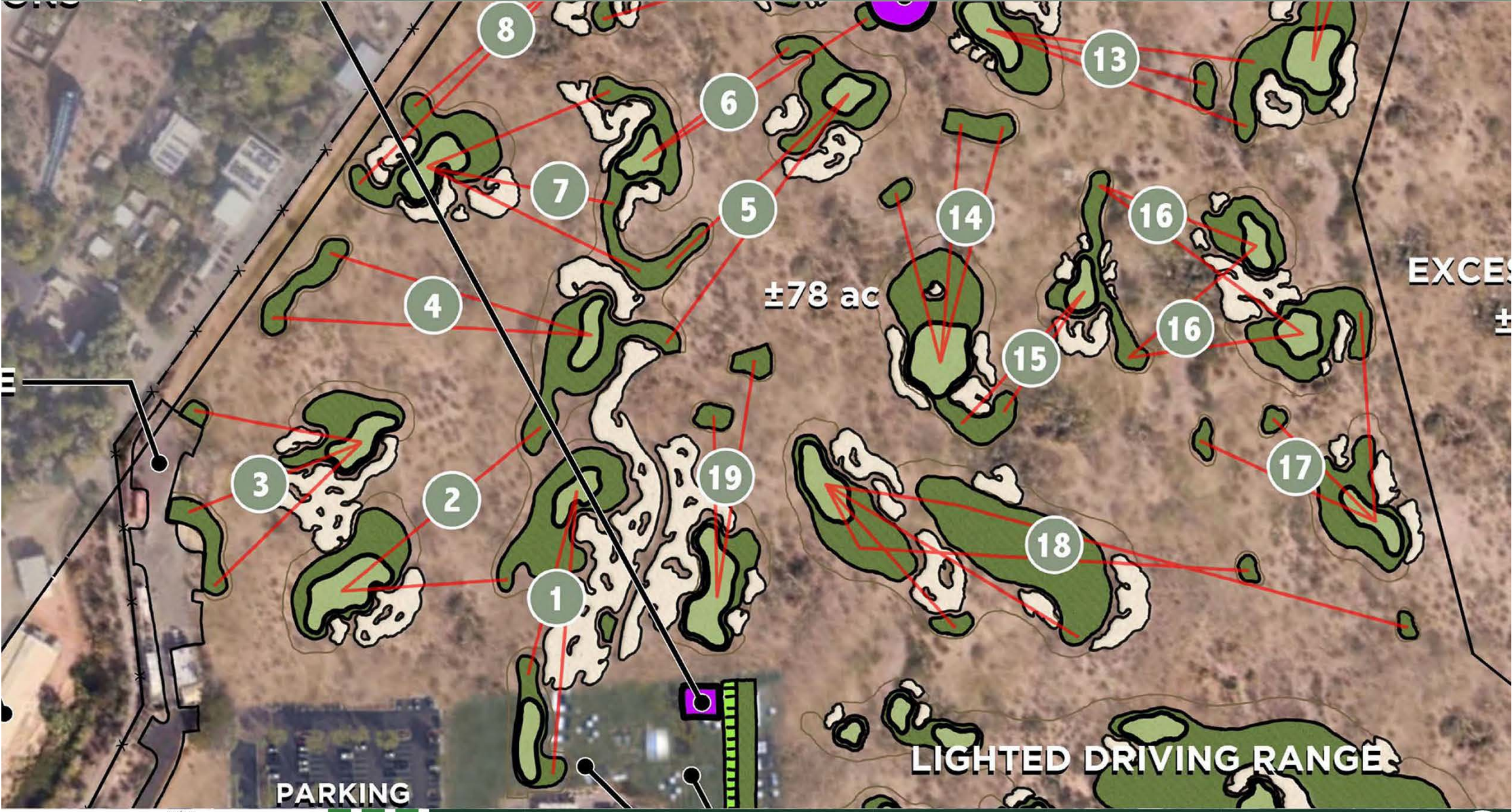
ROLLING HILLS

TEMPE, ARIZONA



CONCEPTUAL PLAN 2a

ROLLING HILLS TEMPE, ARIZONA



PARKING

±78 ac

EXCESS

LIGHTED DRIVING RANGE

CONCEPTUAL PLAN 2b

**PHX ZOO
MAINTENANCE**

**WEDGE
RANGE**

LAKE

EXCESS LA

±78 ac

+15

4

8

9

6

7

5

14

10

13

16

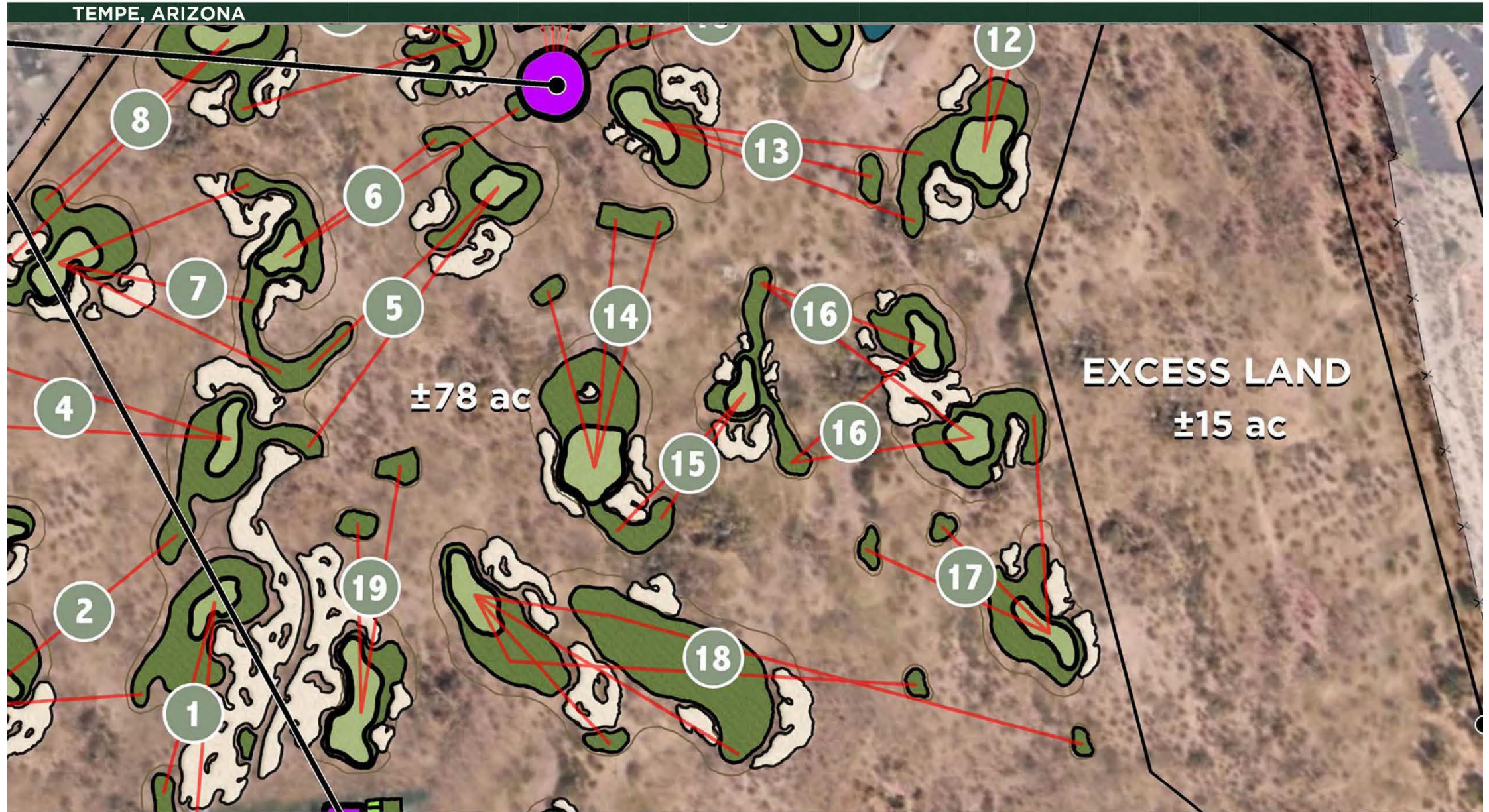
11

12

15

CONCEPTUAL PLAN 2c

ROLLING HILLS TEMPE, ARIZONA



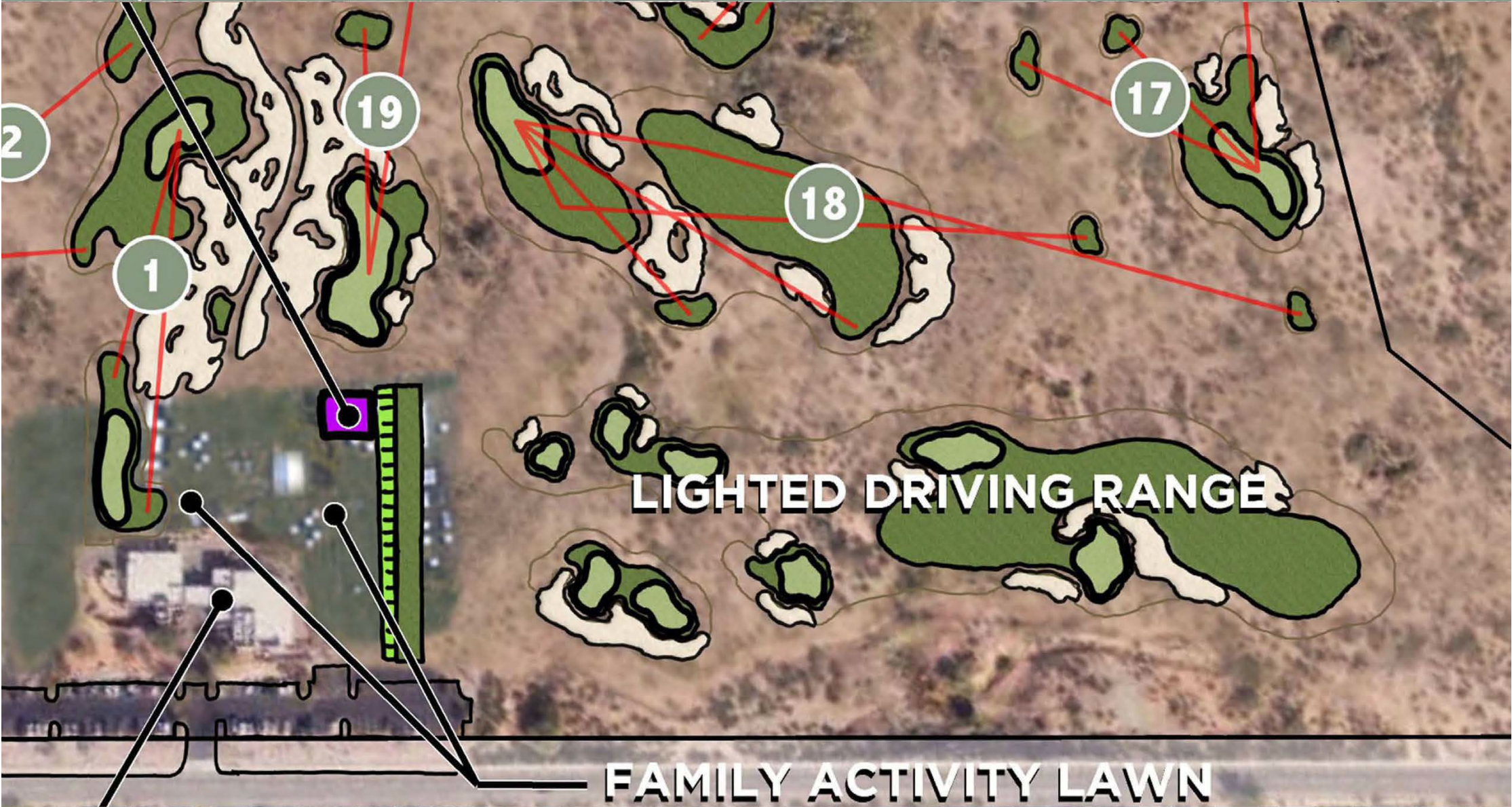
CONCEPTUAL PLAN 2d

ESPIRITU LOCI
The Spirit of the Place

The information contained in this plan has been supplied in whole or in part by the Client and/or other consultants and may be based on or derived in whole or in part from the request of the Client. The drawings and information contained herein are conceptual only and are not intended to represent final architectural drawings or design concepts. We do not represent, warrant, or guarantee that such information is true or that it accurately reflects existing or future conditions.

16 JUN 2022

ROLLING HILLS
TEMPE, ARIZONA



LIGHTED DRIVING RANGE

FAMILY ACTIVITY LAWN

CONCEPTUAL PLAN 2e



ROLLING HILLS TEMPE, ARIZONA



DAY & NIGHTTIME GOLF PLAY

SCORECARD

- HOLE 1 - 140
- HOLE 2 - 129
- HOLE 3 - 102
- HOLE 4 - 160
- HOLE 5 - 154
- HOLE 6 - 130
- HOLE 7 - 119
- HOLE 8 - 170
- HOLE 9 - 135
- HOLE 10 - 107
- HOLE 11 - 095
- HOLE 12 - 128
- HOLE 13 - 136
- HOLE 14 - 120
- HOLE 15 - 090
- HOLE 16 - 126
- HOLE 17 - 103
- HOLE 18 - 300
- HOLE 19 - 119

TOTAL - 2563

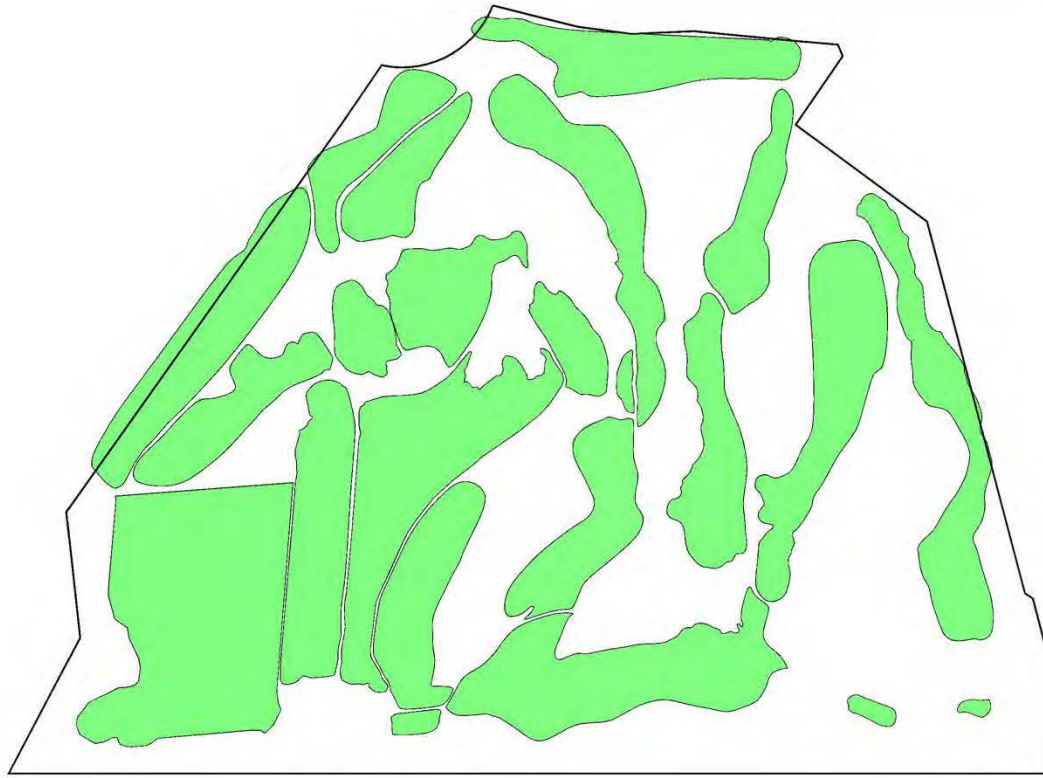
TOTAL
±93 ac



CONCEPTUAL PLAN

ROLLING HILLS

TEMPE, ARIZONA



EXISTING

TURF = ± 46 ac



PROPOSED

TURF = < 30 ac



ESPRITU LOCI
The Spirit of the Place

TURF COMP 3

13
JUN
2022

ROLLING HILLS TEMPE, ARIZONA



±78 ac



GOLF BOUNDARY 4

ESPIRITU LOCI
The Spirit of the Place

The information received in this graphic has been supplied in whole or in part by the Client. It is the Client's responsibility to verify the accuracy of the information. The drawings and descriptions depicted herein are conceptual only and are not intended to represent final construction, planning, or design concepts. We do not warrant, represent, or guarantee the accuracy of the information shown in this graphic for any purpose whatsoever.

13
JUN
2022

ROLLING HILLS

TEMPE, ARIZONA



EXCESS
PROPERTY
±15 ac

0' 150' 300' EAST



EXCESS PROPERTY 5

ESPIRITU LOCI
The Spirit of the Place

The information contained in this graphic has been supplied in whole or in part by the Client and/or their consultants and may have been obtained in whole or in part at the request of the Client. The drawings and information depicted herein are conceptual only and do not intend to represent final architecture, planning, or design concepts. We do not represent, warrant, or guarantee that such information is true or that it accurately reflects existing or future development.

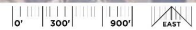
13 JUN 2022

Sustainability Suggestions

Questions or Comments



ROLLING HILLS TEMPE, ARIZONA



CONCEPTUAL PLAN OVER EXISTING AERIAL

ESPIRITU LOCI
The Spirit of the Place

The information contained in this graphic has been supplied in whole or in part by the Client and/or their consultants and may have been obtained in whole or in part on the request of the Client. The drawings and information depicted herein are conceptual only and are not intended to represent final construction, planning or design concepts. We do not warrant, warrant, or guarantee that such information is true or that it accurately reflects existing or future development.

16 JUN 2022