

Maryanne Corder
Neighborhood Grant Workshop:
Application Process



Neighborhood Grant Program

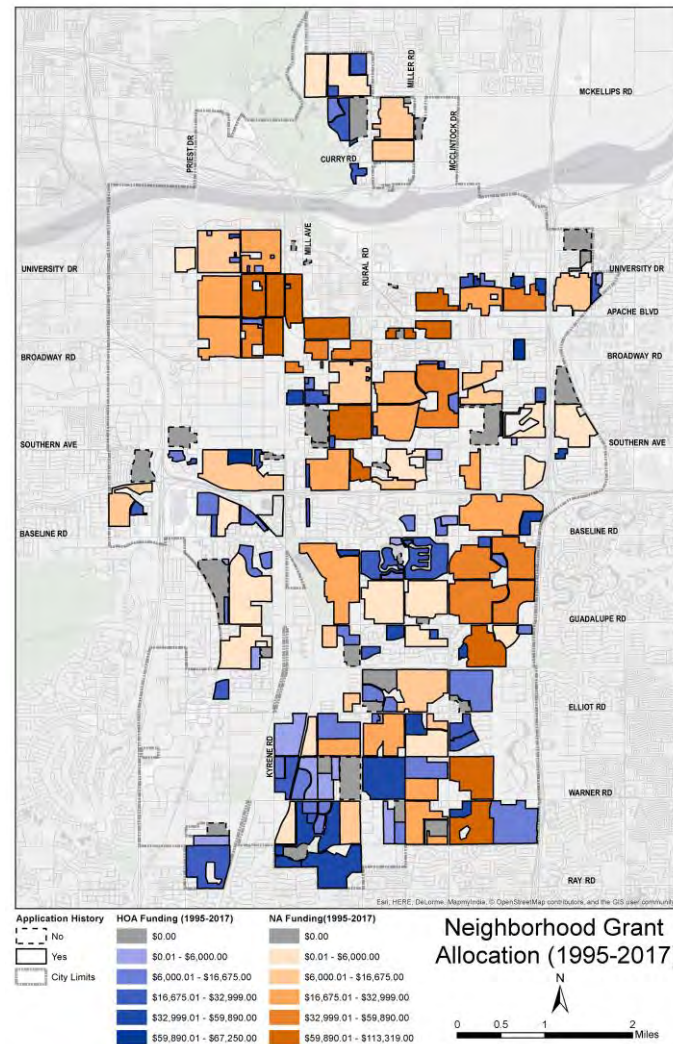
- Ensures a portion of the city's annual budget is dedicated to improve residential neighborhoods through community-initiated capital projects
- Requires resident participation and involvement in the selection, coordination and completion of projects



Tempe

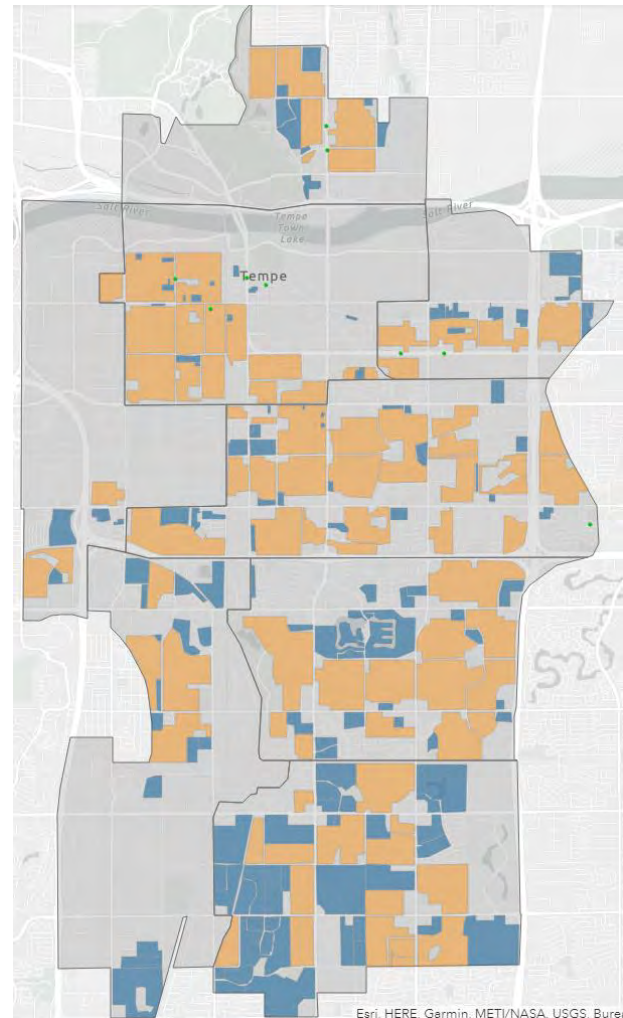
Funding

- Since 1994, over 650 projects completed and over \$4.8 million invested
- \$350,000 available with possible additional funds for water conservation projects
- Maximum grant amount is \$20,000
- A match of at least 25% of the requested funds is required for HOAs and CFMH communities



Who can apply?

- 82 Neighborhood Associations
- 134 Homeowners' Associations
- Crime-Free Multi-Housing Certified Properties





What can you apply for?

- A capital project that benefits the entire neighborhood and is a one-time expenditure completed by June 30, 2023.

What can't you apply for?

- HOA and CFMH requests may not be for maintenance projects such as entry gates, roofing repair, common ground and pool maintenance, painting, road repair (for private streets) etc.
- Project maintenance or operation costs



Who do I involve?

- Community involvement must happen early on and throughout the project process.
- All residents of the community:
 - ✓ must be notified of the opportunity to apply for a grant
 - ✓ provided a chance to propose and comment on project ideas
 - ✓ be included in the final selection of the project



What do I submit?

- Application Form
- All project types:
 - ✓ bids
 - ✓ pictures
 - ✓ proof of community involvement
- Specific mandatory requirements for your project type



Resources

tempe.gov/NeighborhoodGrants

- Grant Guidelines by Project Type and FAQ's
- Recordings and Presentations from Grant Workshops
 - Application Process
 - Data Workshop
 - Arts
 - HOA's
 - Landscape, Lighting and Environmental Impacts
 - Parks
 - Traffic Calming



What is evaluated?

Impact

- accessible and equitable to all
- addresses a shortcoming
- benefits a significant number
- complements neighborhood amenities
- enhances aesthetics
- improves health and safety of residents
- provides an environmental benefit, such as water and/or energy conservation, shade

Quality

- accurate budget
- brief project description
- complete application - all elements present and appropriate staff discussions have taken place
- neighborhood included in project creation and selection

Ability

- ability to complete the project during the fiscal year
- addresses how project will be maintained in the future



What is the timeline?



Maryanne Corder Neighborhood Grant

Timeline and Tips



Now

Host a Neighborhood Meeting
Gauge interest and vote on project ideas. Reach out to staff before and after your meeting and review project guidelines. All in the community must be invited



Now - Jan 2022

Talk to City Staff
Get feedback from staff and be prepared for possible project revisions. A preliminary site plan application and review through city planning may be required.



Now - March 2022

Get Quotes
Shop around and see who will be the best fit for your project. Allow plenty of time for quotes.



March - April 2022

Prep Application
Gather quotes, proof of community engagement, budget and all pieces necessary for application. Allow time for staff to review your application.



Apr 25, 2022 by 5 p.m.

Submit Application
Make sure you get your submission in by the deadline.



May-August 2022

Be Responsive
Award letters will be sent in August. Be prepared to answer questions about your project and to make possible revisions.

tempe.gov/NeighborhoodGrants

The background features a central light blue circle surrounded by concentric rings of dark blue and yellow, creating a tunnel-like effect.

Completed Projects

Entry Signage



Neighborhood + House Identification

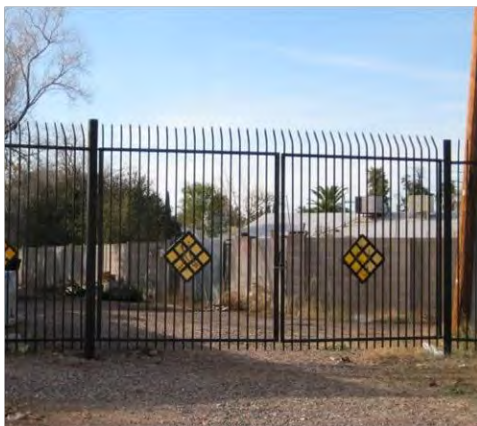


curbs

alleys

neighborhood
identification

Fencing



Walls



Lighting



Landscape



Landscape



Landscape: street trees



2003



2018

Art



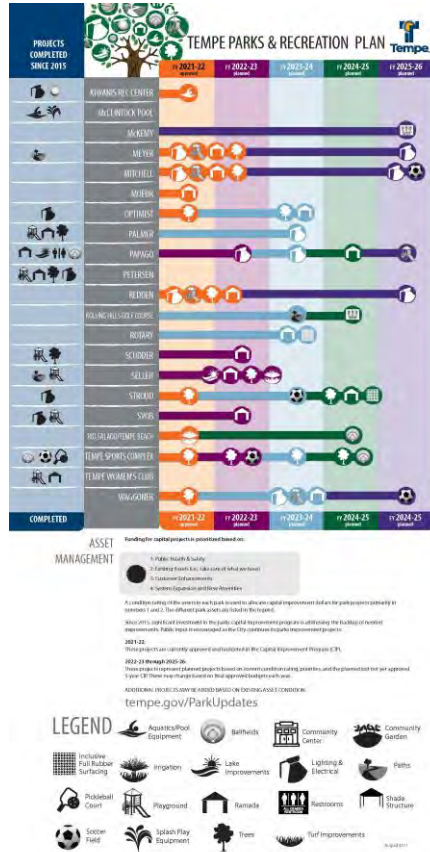
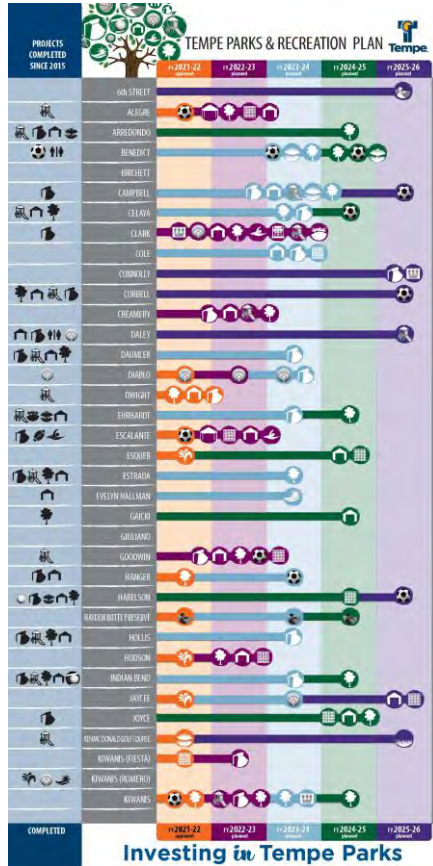
Art



Art



Parks



Parks



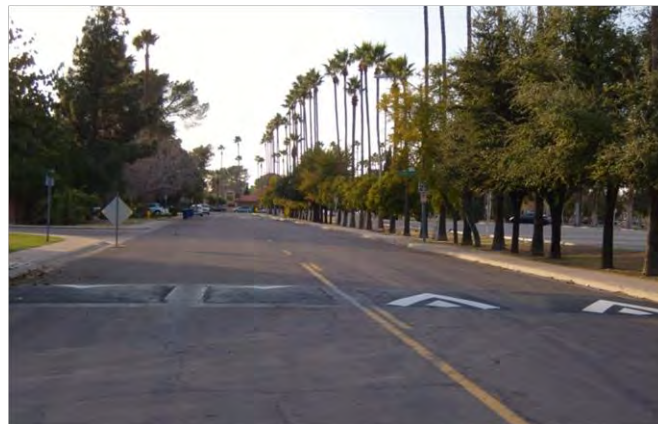
Parks



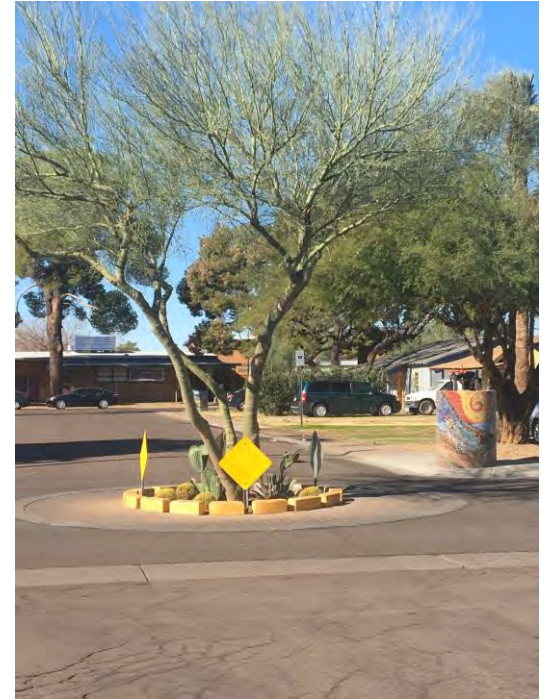
Parks



Traffic Calming



Traffic Calming



Innovative Ideas

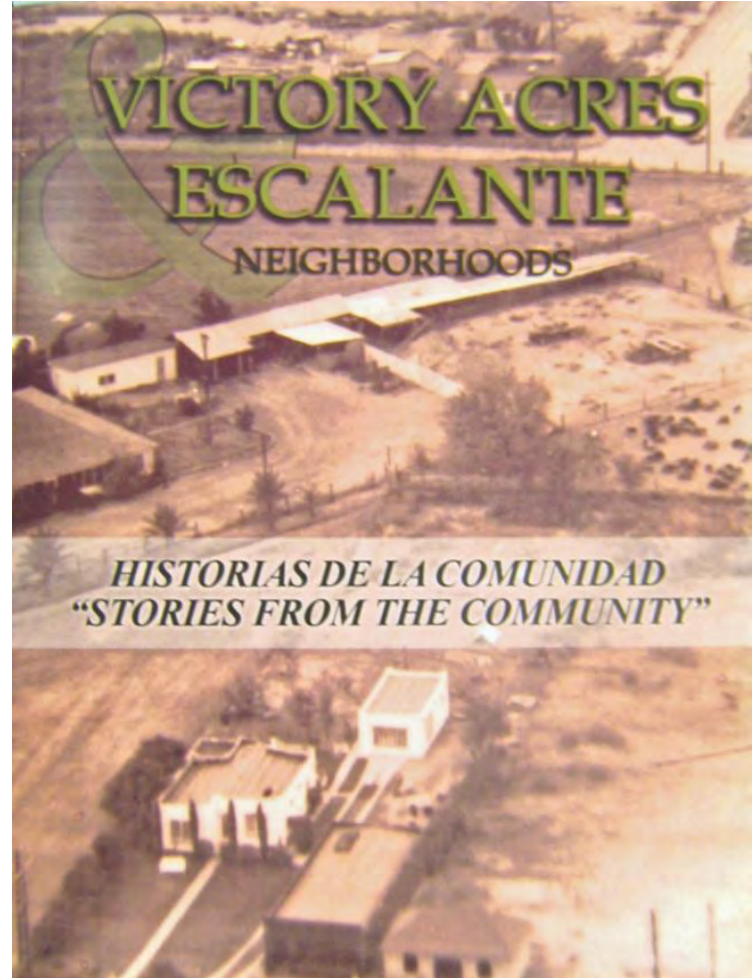


MAPLE ASH, WILSON ART & GARDEN, AND MITCHELL PARK
Tampa Traffic Mitigation Grant Steering Committee

[Home](#) [About the Project](#) [Upcoming Events](#) [Traffic Calming](#) [Schedule](#) [Contact](#)



NEIGHBORHOOD TRAFFIC MITIGATION
STUDY



The background features a central light blue circle surrounded by concentric, hand-drawn style lines in dark blue and orange, creating a tunnel-like or vortex effect.

Questions?