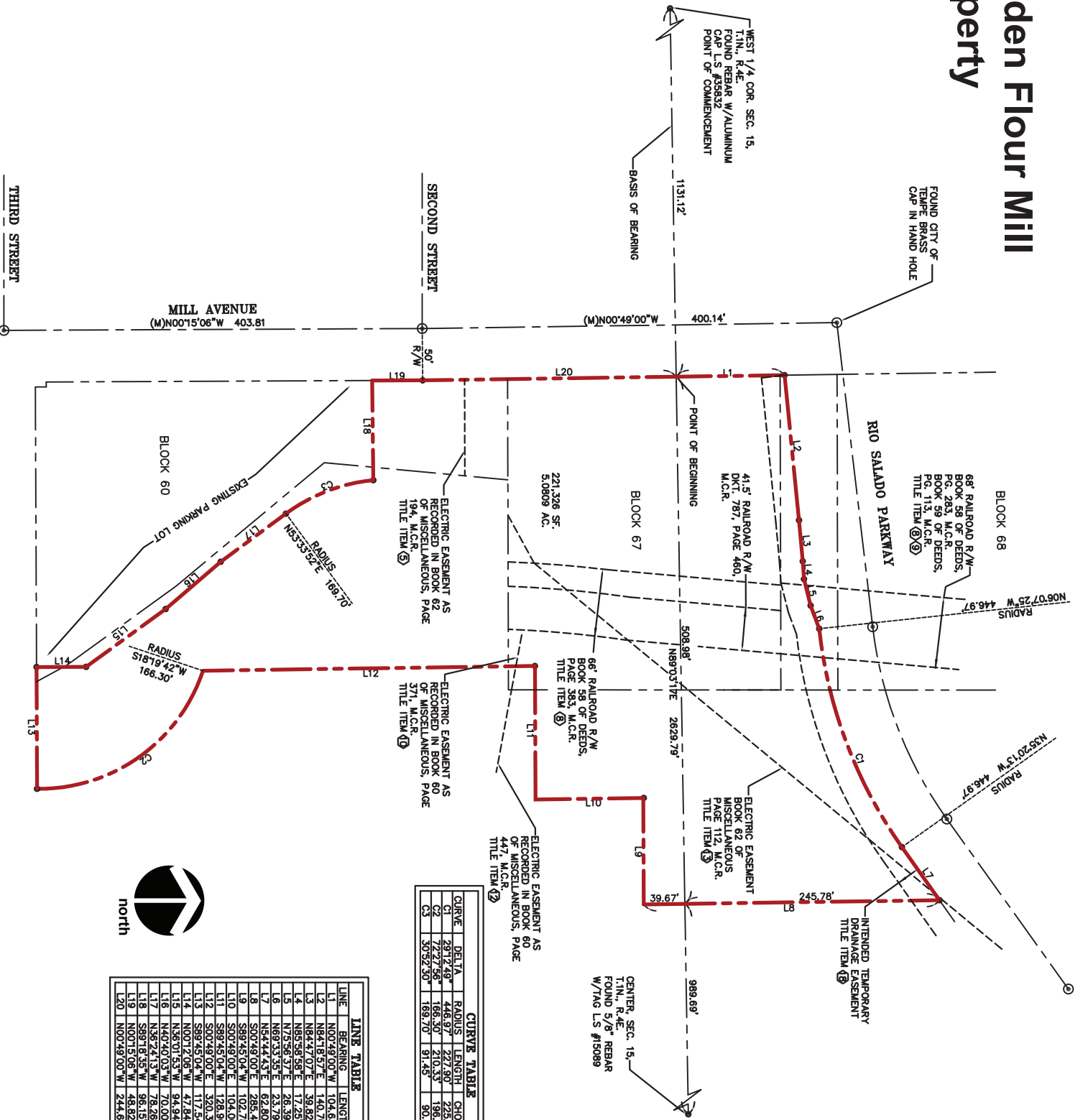


Hayden Flour Mill Property

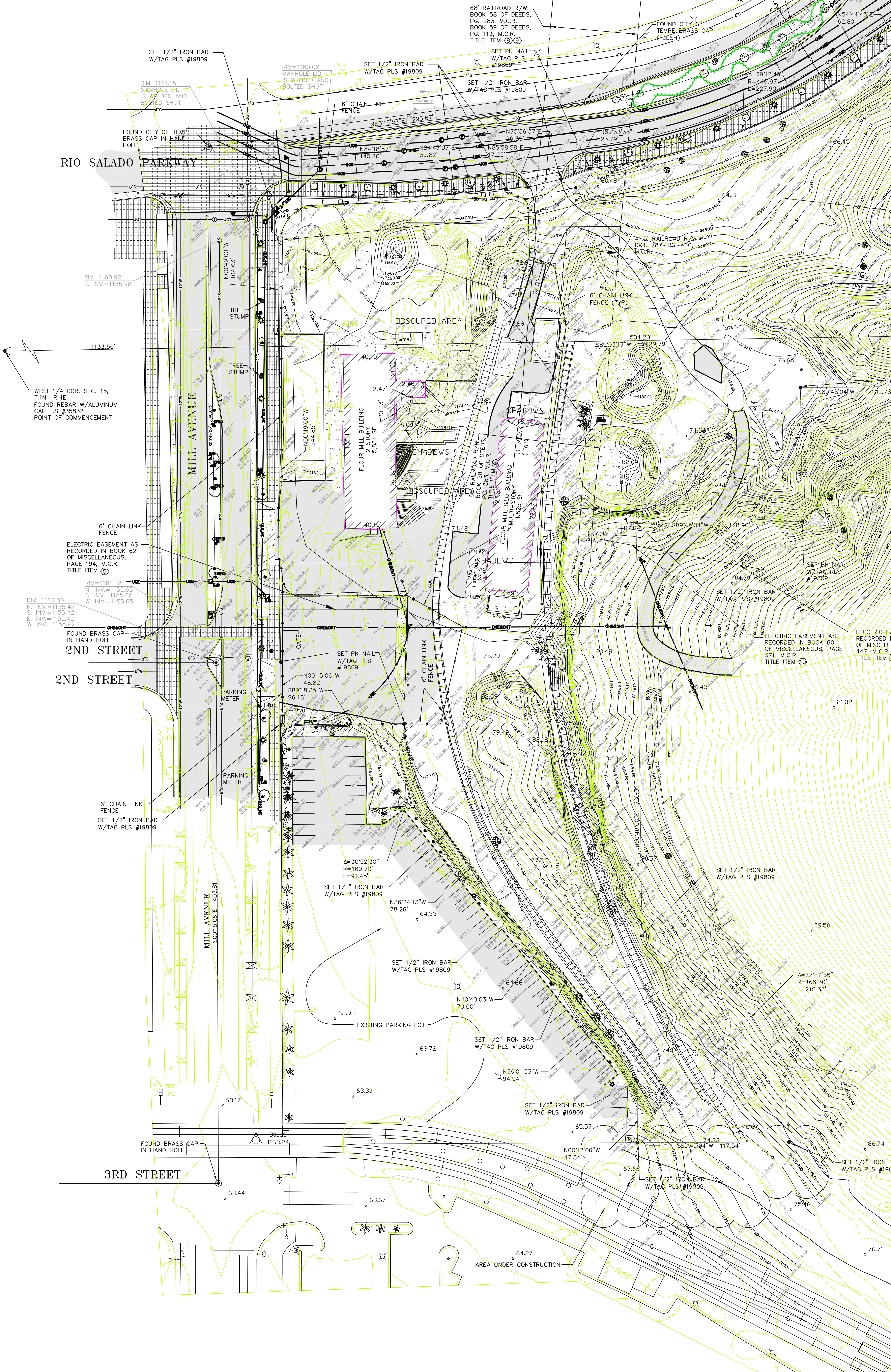


CURVE TABLE

| CURVE | DELTA | RADIUS | LENGTH | CHORD | CHORD BEARING |
|-------|----------|---------|---------|---------|---------------|
| C1 | 297.249° | 446.97' | 227.90' | 225.44' | S89°16'11"W |
| C2 | 172.756° | 166.30' | 210.33' | 196.59' | S35°26'20"E |
| C3 | 305.230° | 169.70' | 91.45' | 90.34' | N20°59'53"W |

LINE TABLE

| LINE | BEARING | LENGTH |
|------|-------------|---------|
| L1 | N00°49'00"W | 104.63' |
| L2 | N84°18'57"E | 140.70' |
| L3 | N84°47'07"E | 39.82' |
| L4 | N85°58'58"E | 17.25' |
| L5 | N75°56'37"E | 26.39' |
| L6 | N89°33'35"E | 23.78' |
| L7 | N84°44'43"E | 62.80' |
| L8 | S00°49'00"E | 269.43' |
| L9 | S89°43'04"E | 102.78' |
| L10 | S00°49'00"W | 194.00' |
| L11 | S00°43'00"E | 168.90' |
| L12 | S00°43'00"E | 156.90' |
| L13 | S89°45'04"W | 117.53' |
| L14 | N00°12'06"W | 47.84' |
| L15 | N30°15'53"W | 94.94' |
| L16 | N40°40'03"W | 70.00' |
| L17 | N36°24'13"W | 78.26' |
| L18 | S89°18'15"W | 96.15' |
| L19 | N00°15'06"W | 48.82' |
| L20 | N00°49'00"W | 244.65' |



RIO SALADO PARKWAY

MILL AVENUE

2ND STREET

3RD STREET

RIM=1160.92
S. INV.=1155.98

RIM=1161.22
N. INV.=1155.65
S. INV.=1155.65
W. INV.=1155.65

RIM=1162.30
N. INV.=1155.42
S. INV.=1155.42
E. INV.=1155.42
W. INV.=1155.42

80063
1163.24

68' RAILROAD R/W
BOOK 58 OF DEEDS,
PG. 283, M.C.R.
BOOK 59 OF DEEDS,
PG. 113, M.C.R.
TITLE ITEM (8)(9)

FOUND CITY OF
TEMP. BRASS CAP
(FLUSH)

WEST 1/4 COR. SEC. 15,
T.1N., R.4E.
FOUND REBAR W/ALUMINUM
CAP L.S. #35832
POINT OF COMMENCEMENT

ELECTRIC EASEMENT AS
RECORDED IN BOOK 62
OF MISCELLANEOUS,
PAGE 194, M.C.R.
TITLE ITEM (5)

FOUND BRASS CAP
IN HAND HOLE

ELECTRIC EASEMENT AS
RECORDED IN BOOK 60
OF MISCELLANEOUS,
PAGE 371, M.C.R.
TITLE ITEM (10)

FOUND BRASS CAP
IN HAND HOLE

OBSCURED AREA

FLOUR MILL BUILDING
2 STORY
5,831 SF

OBSCURED AREA

SHADOWS

FLOUR MILL SILO BUILDING
MILL STORY
4,292 SF

GATE

EXISTING PARKING LOT

AREA UNDER CONSTRUCTION

1133.50'

6' CHAIN LINK
FENCE

6' CHAIN LINK
FENCE

6' CHAIN LINK
FENCE

6' CHAIN LINK
FENCE

6' CHAIN LINK
FENCE

6' CHAIN LINK
FENCE

6' CHAIN LINK
FENCE

6' CHAIN LINK
FENCE

6' CHAIN LINK
FENCE

6' CHAIN LINK
FENCE

6' CHAIN LINK
FENCE

RIM=1161.15
MANHOLE TOP
IS WELDED AND
BOLTED SHUT

RIM=1160.02
MANHOLE LID
IS WELDED AND
BOLTED SHUT

RIM=1161.22
N. INV.=1155.65
S. INV.=1155.65
W. INV.=1155.65

RIM=1162.30
N. INV.=1155.42
S. INV.=1155.42
E. INV.=1155.42
W. INV.=1155.42

RIM=1161.22
N. INV.=1155.65
S. INV.=1155.65
W. INV.=1155.65

RIM=1162.30
N. INV.=1155.42
S. INV.=1155.42
E. INV.=1155.42
W. INV.=1155.42

RIM=1161.15
MANHOLE TOP
IS WELDED AND
BOLTED SHUT

RIM=1160.02
MANHOLE LID
IS WELDED AND
BOLTED SHUT

RIM=1161.22
N. INV.=1155.65
S. INV.=1155.65
W. INV.=1155.65

RIM=1162.30
N. INV.=1155.42
S. INV.=1155.42
E. INV.=1155.42
W. INV.=1155.42

RIM=1161.15
MANHOLE TOP
IS WELDED AND
BOLTED SHUT

RIM=1160.02
MANHOLE LID
IS WELDED AND
BOLTED SHUT

RIM=1161.22
N. INV.=1155.65
S. INV.=1155.65
W. INV.=1155.65

RIM=1162.30
N. INV.=1155.42
S. INV.=1155.42
E. INV.=1155.42
W. INV.=1155.42

RIM=1161.15
MANHOLE TOP
IS WELDED AND
BOLTED SHUT

RIM=1160.02
MANHOLE LID
IS WELDED AND
BOLTED SHUT

OBSCURED AREA

FLOUR MILL BUILDING
2 STORY
5,831 SF

OBSCURED AREA

SHADOWS

FLOUR MILL SILO BUILDING
MILL STORY
4,292 SF

GATE

EXISTING PARKING LOT

AREA UNDER CONSTRUCTION

1133.50'

6' CHAIN LINK
FENCE

6' CHAIN LINK
FENCE

6' CHAIN LINK
FENCE

6' CHAIN LINK
FENCE

6' CHAIN LINK
FENCE

6' CHAIN LINK
FENCE

6' CHAIN LINK
FENCE

6' CHAIN LINK
FENCE

6' CHAIN LINK
FENCE

6' CHAIN LINK
FENCE

6' CHAIN LINK
FENCE

RIM=1160.92
S. INV.=1155.98

RIM=1161.22
N. INV.=1155.65
S. INV.=1155.65
W. INV.=1155.65

RIM=1162.30
N. INV.=1155.42
S. INV.=1155.42
E. INV.=1155.42
W. INV.=1155.42

80063
1163.24

68' RAILROAD R/W
BOOK 58 OF DEEDS,
PG. 283, M.C.R.
BOOK 59 OF DEEDS,
PG. 113, M.C.R.
TITLE ITEM (8)(9)

FOUND CITY OF
TEMP. BRASS CAP
(FLUSH)

WEST 1/4 COR. SEC. 15,
T.1N., R.4E.
FOUND REBAR W/ALUMINUM
CAP L.S. #35832
POINT OF COMMENCEMENT

ELECTRIC EASEMENT AS
RECORDED IN BOOK 62
OF MISCELLANEOUS,
PAGE 194, M.C.R.
TITLE ITEM (5)

FOUND BRASS CAP
IN HAND HOLE

ELECTRIC EASEMENT AS
RECORDED IN BOOK 60
OF MISCELLANEOUS,
PAGE 371, M.C.R.
TITLE ITEM (10)

FOUND BRASS CAP
IN HAND HOLE

OBSCURED AREA

FLOUR MILL BUILDING
2 STORY
5,831 SF

OBSCURED AREA

SHADOWS

FLOUR MILL SILO BUILDING
MILL STORY
4,292 SF

GATE

EXISTING PARKING LOT

AREA UNDER CONSTRUCTION