

Community Center Campus Master Plan

Monday, May 3, 2021



PROJECT GOALS

- **Consolidate and Locate Human Services Department**
- **Optimize Use and Functionality of Plazas and Campus Buildings**
- **Improved Pedestrian Experience**
- **Enhanced Visibility and Security**
- **Sustainable Design and Environmental Improvements**

WHAT IS THE HUMAN SERVICES DEPARTMENT?

- **Human Services offers a wide range of inclusive programs and services to assist individuals and families with improving their quality of life.**
- A full continuum of trauma sensitive services addresses needs across the lifespan through three distinct areas:
 - Social Services
 - Community Partnerships & Resources
 - Education & Senior Services
- To learn more visit:

<https://www.tempe.gov/government/human-services>

WHY DOES HUMAN SERVICES NEED A DEDICATED FACILITY?

CITY OF TEMPE



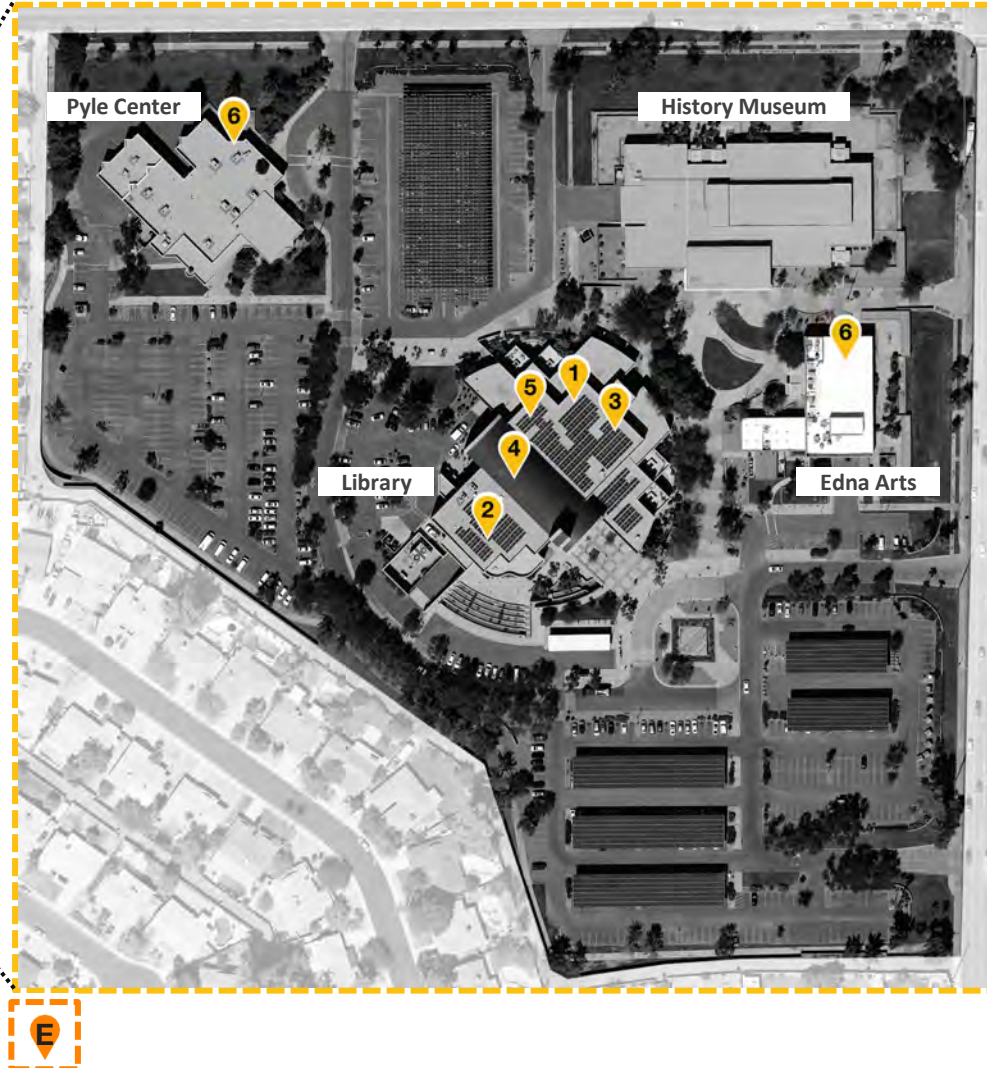
- **Currently sharing space with other departments across 8 City facilities**
 - Operational challenges and inefficiencies
 - Crowding for all departments in shared facilities
- Consolidate services offered under one roof
 - More convenient for clients involved in multiple programs
 - Increased collaboration and synergy between Human Services staff
 - Ability to refer clients seamlessly throughout a continuum of services
- Human Services lacks a visible public presence that a dedicated building would provide

CURRENT HUMAN SERVICES LOCATIONS

CITY OF TEMPE



COMMUNITY CENTER CAMPUS

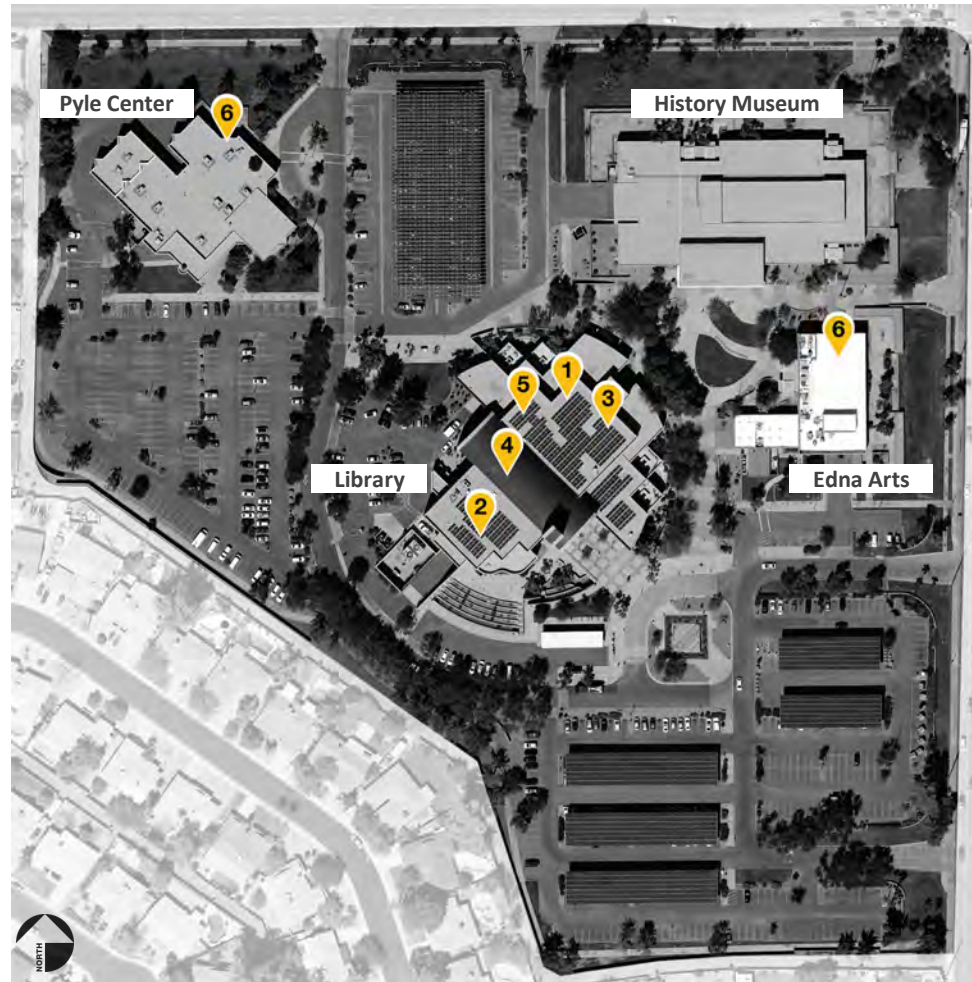


- A** Westside Multi-Generational Center
Counseling Services
- B** B.B. Moer House
Community Partnerships & Resources
Tempe Community Council
- C** Elias Rodriguez House
Housing staff offices
- D** Community Center Campus
 - 1** Community Supervision
 - 2** Education
 - 3** Homeless Outreach Prevention Effort (HOPE)
 - 4** Housing
 - 5** Human Services Administration
 - 6** Kid Zone
- E** Location Undisclosed
(for employee and client safety)
Care 7

HUMAN SERVICES ON CAMPUS

- Majority of Human Services department is located at the Library second floor
- Human Services has a presence on all floors of the Library
- Differing hours of operations from Library Services
- Department is steadily growing and at full capacity in the Library
- Library Services cannot make best use of Library building due to space currently shared with Human Services
- Human Services Kid Zone program has office and storage space in both the Edna Arts and Pyle Centers
- Human Services clients have difficulty locating the department on campus

COMMUNITY CENTER CAMPUS



HUMAN SERVICES

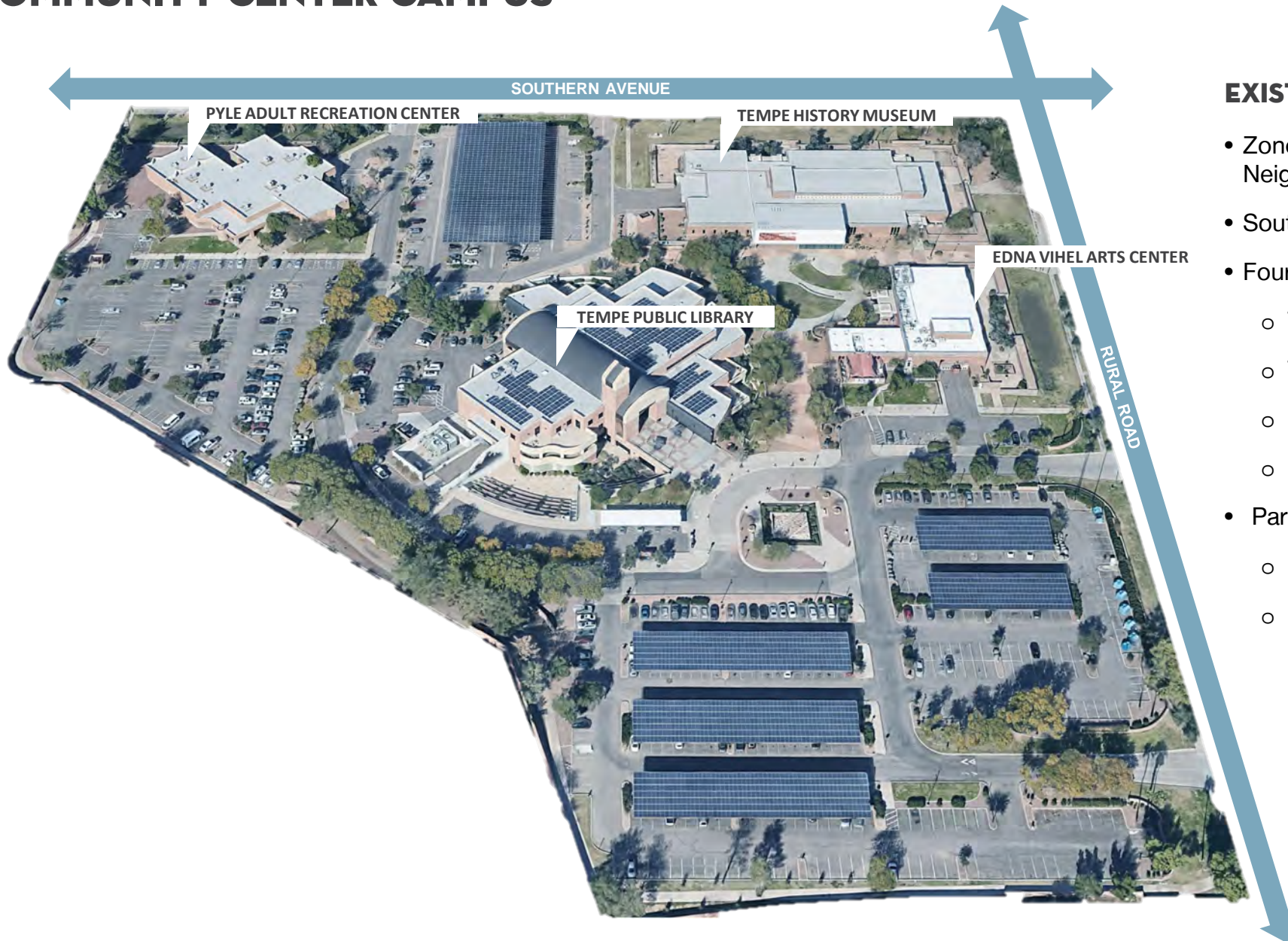
- 1 Community Supervision
- 2 Education
- 3 Homeless Outreach Prevention Effort (HOPE)
- 4 Housing
- 5 Human Services Administration
- 6 Kid Zone

COMMUNITY & STAFF PRIORITIES

- Increase shade, mitigate heat at plazas
- Expand classroom, program and event spaces
- Improve pedestrian environment
 - Increase vegetation
 - Useable, interactive spaces
- Improve safety and visibility
- Activate underutilized spaces
- Improve connectivity between buildings
- Reduce walking distances from parking to facilities (especially for Edna Arts)
- Space for departments to expand services
- Increase availability of meeting rooms
- Privacy for Human Services clients
- Improve signage and wayfinding
- Improve streetscape



COMMUNITY CENTER CAMPUS



EXISTING SITE

- Zoned PCC-1 Planned Commercial Center Neighborhood
- Southwest corner of Southern Ave & Rural Rd
- Four existing buildings on campus:
 - Tempe Public Library 120,700 SF
 - Tempe History Museum 36,500 SF
 - Pyle Recreation Center 21,500 SF
 - Edna Vihel Arts Center 14,300 SF
- Parking
 - 838 Existing parking spaces
 - 650 Parking spaces required per code

SITE ANALYSIS

Parking, Transit & Access

- Primary access drive divides campus plazas and buildings from parking
- Difficult making turns in and out of campus during high traffic

Pedestrian Comfort

- Little to no shade
- Most parking outside 300 ft. walking radius of public entrances
- Pedestrians cross main access drive to access buildings
- Security issues due to low visibility

Site Concerns

- Multiple, large and underutilized spaces
- Ineffective signage & wayfinding
- Low visibility into campus
- Streetscape unwelcoming to visitors



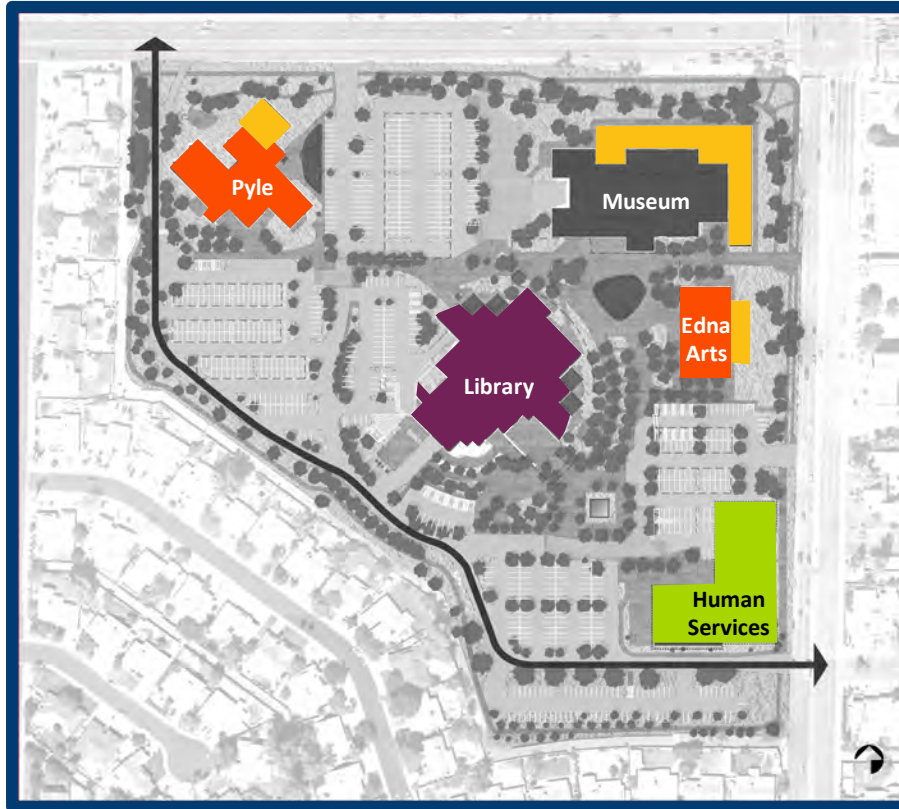
MASTER PLAN OPTIONS

STAFF RECOMMENDATION

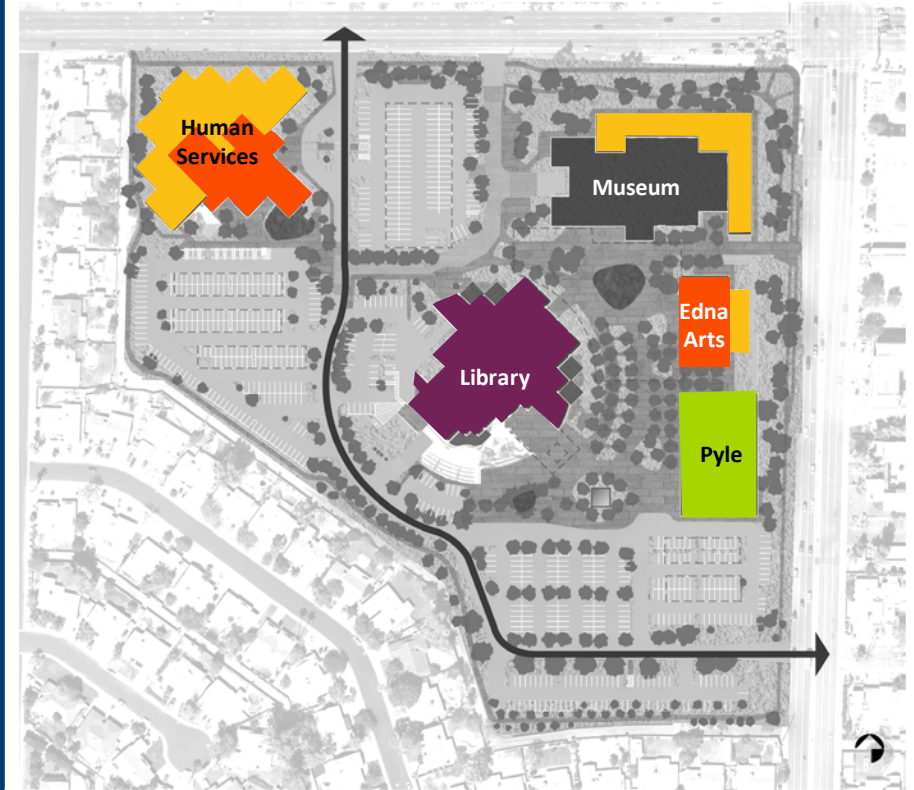
Site Option 1:

- Less disruption to campus facility operations
- Lower cost option, complete phased plan will cost 4.2% lower than Option 3
- Phase 1 cost is 27.4% lower compared to Option 3
- Less construction phases compared to Option 3
- Primary access drive at campus perimeter
- Space for future expansion of all campus buildings
- Better distribution of buildings throughout site, parking availability
- Supported by City Council

OPTION 1



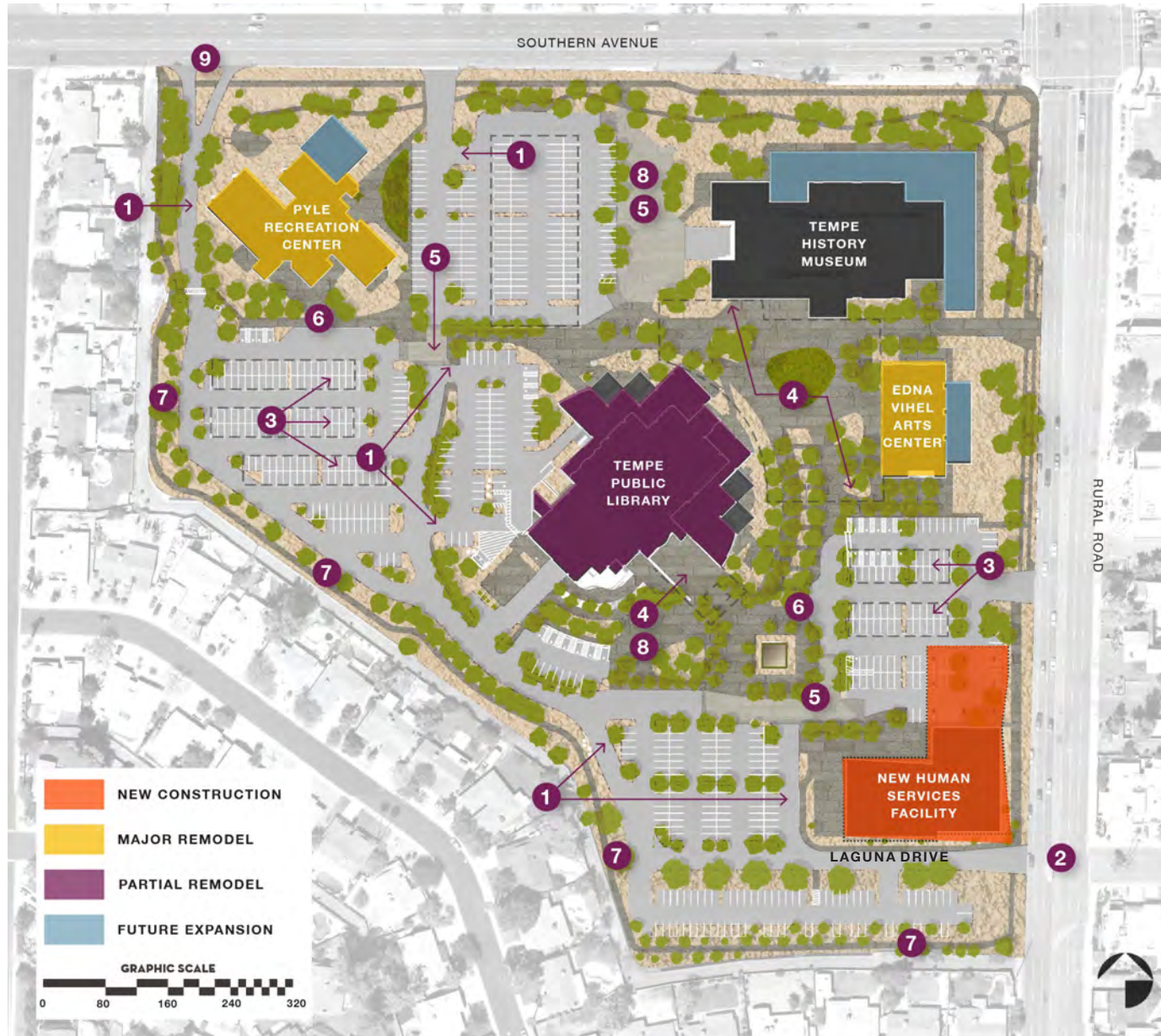
OPTION 3



■ New Construction
 ■ Major Remodel
 ■ Partial Remodel
 ■ Future Expansion

MASTER PLAN

- 1 New access road
- 2 Future traffic light at Laguna Drive
- 3 Relocated solar canopy
- 4 New shade canopy
- 5 Speed table
- 6 Relocated drop-off
- 7 Expanded landscape buffer at neighborhood
- 8 Expanded plaza
- 9 New campus vehicular entrance



IMPROVED PEDESTRIAN ENVIRONMENT



SHADE CANOPY AT LIBRARY ENTRANCE



NEW HUMAN SERVICES FACILITY

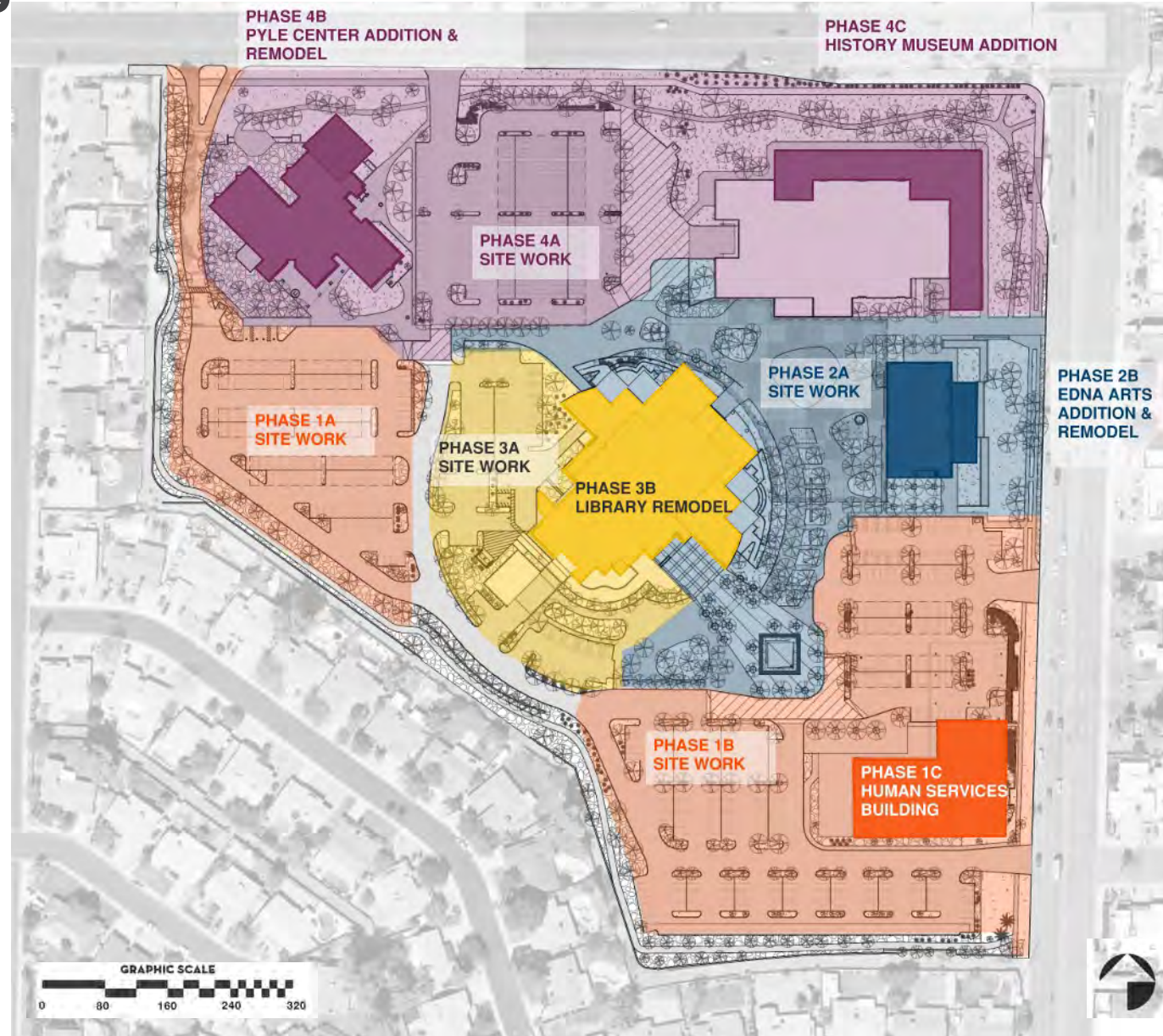
PROPOSED PHASING

PHASE 1:

- A. Site work at West parking lot and new site access drive
- B. Site work at South parking lot
- C. Human Services Building and associated site work

PHASE 2:

- A. Site work at main plaza
- B. Edna Arts Center total remodel, addition, and associated site work



PHASE 3:

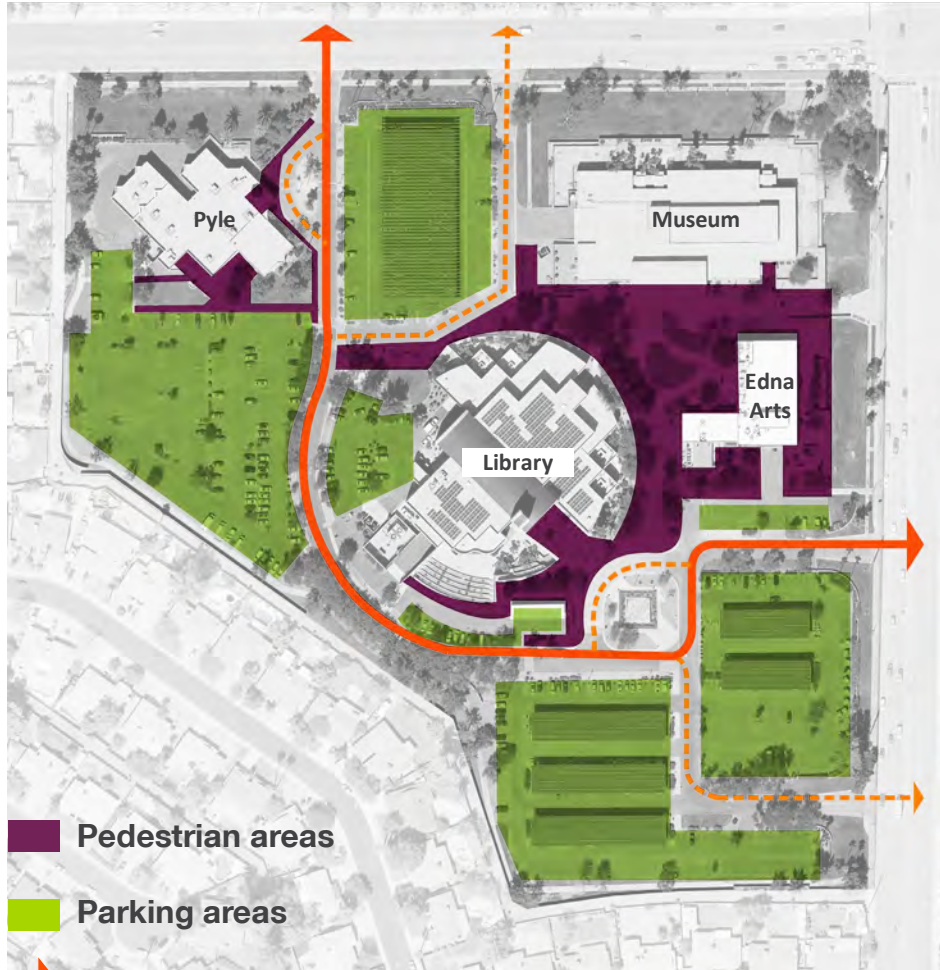
- A. Site work at Library amphitheater and staff parking lot
- B. Library remodel

PHASE 4:

- A. Site work at North parking lot
- B. Pyle Center addition, major remodel, and associated site work
- C. History Museum addition and associated site work

PARKING & TRAFFIC FLOW

EXISTING LAYOUT



■ Pedestrian areas

■ Parking areas

→ Main access drive

---→ Secondary access drive

PROPOSED LAYOUT

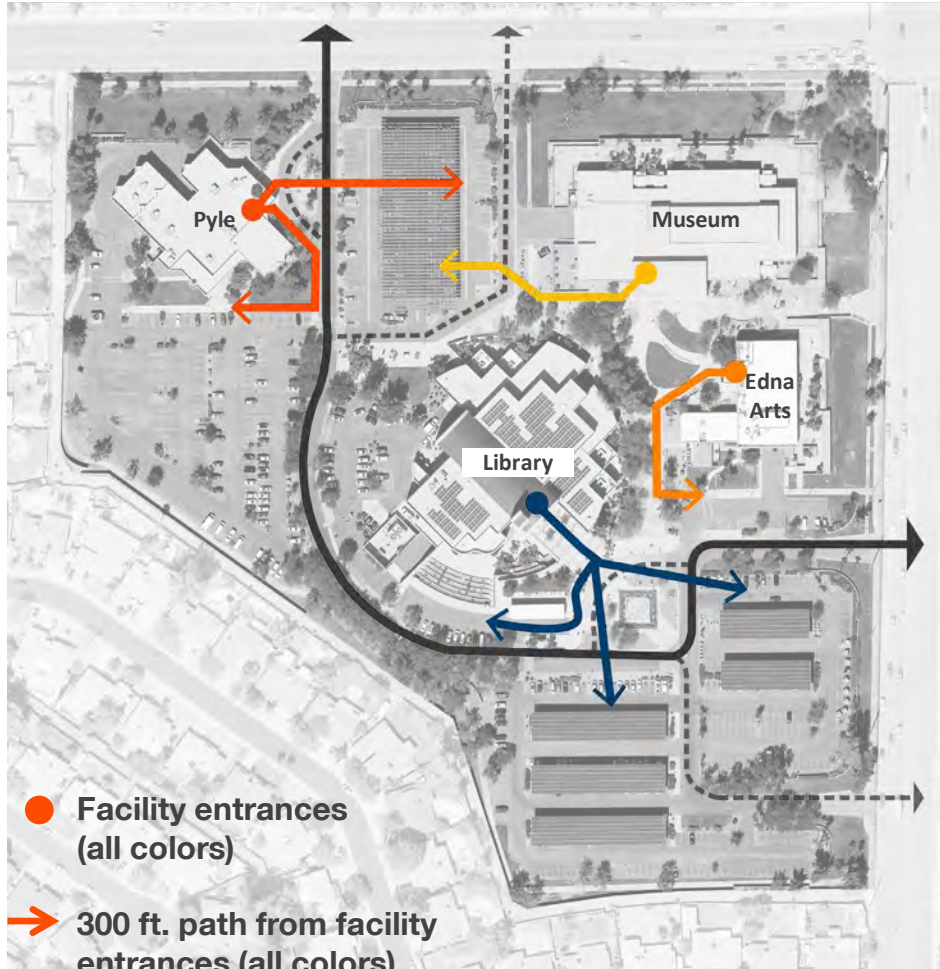


IMPROVEMENTS

- Expanded pedestrian connectivity throughout campus
- Main access drive relocated to campus perimeter and aligned with potential future traffic light at Rural Road and Laguna Drive
- Campus visitors can park and walk to all campus buildings without crossing the main access drive
- Main vehicular access points further from the Rural Road / Southern Ave intersection will reduce traffic impact when entering and exiting campus by car

PEDESTRIAN ACCESS

EXISTING LAYOUT



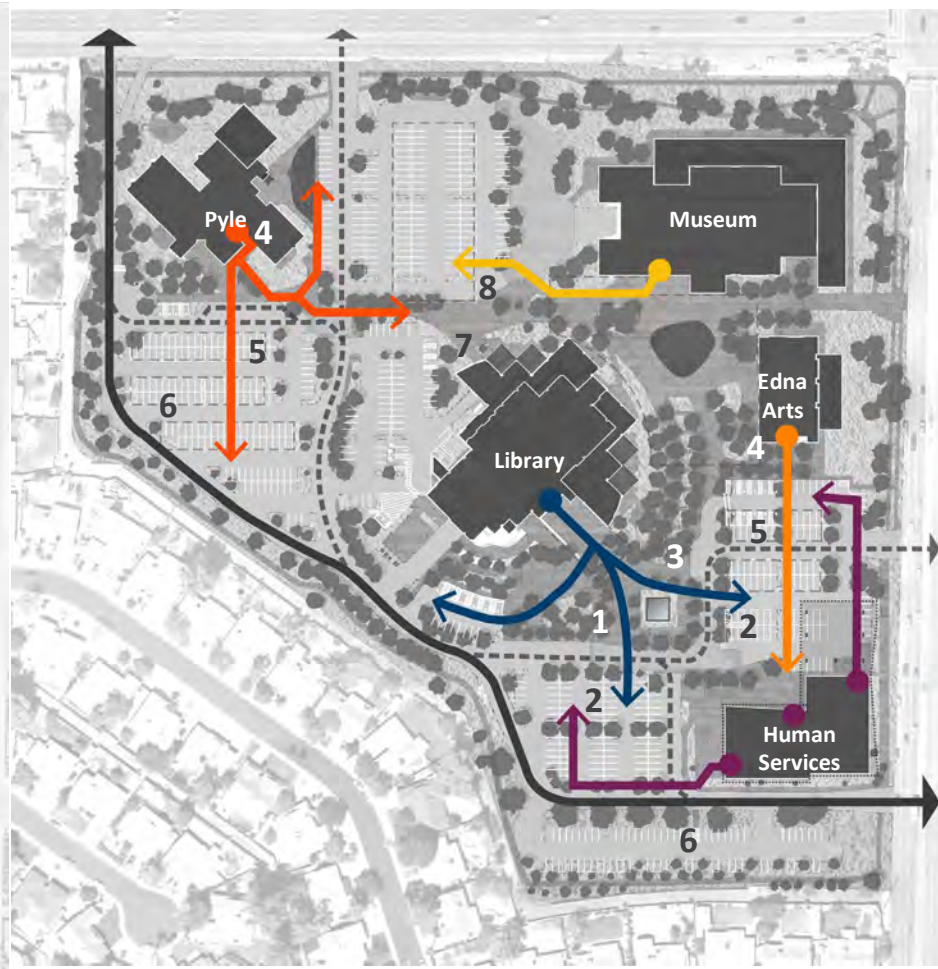
● Facility entrances (all colors)

➔ 300 ft. path from facility entrances (all colors)

➔ Main access drive

➔ Secondary access drive

PROPOSED LAYOUT



IMPROVEMENTS

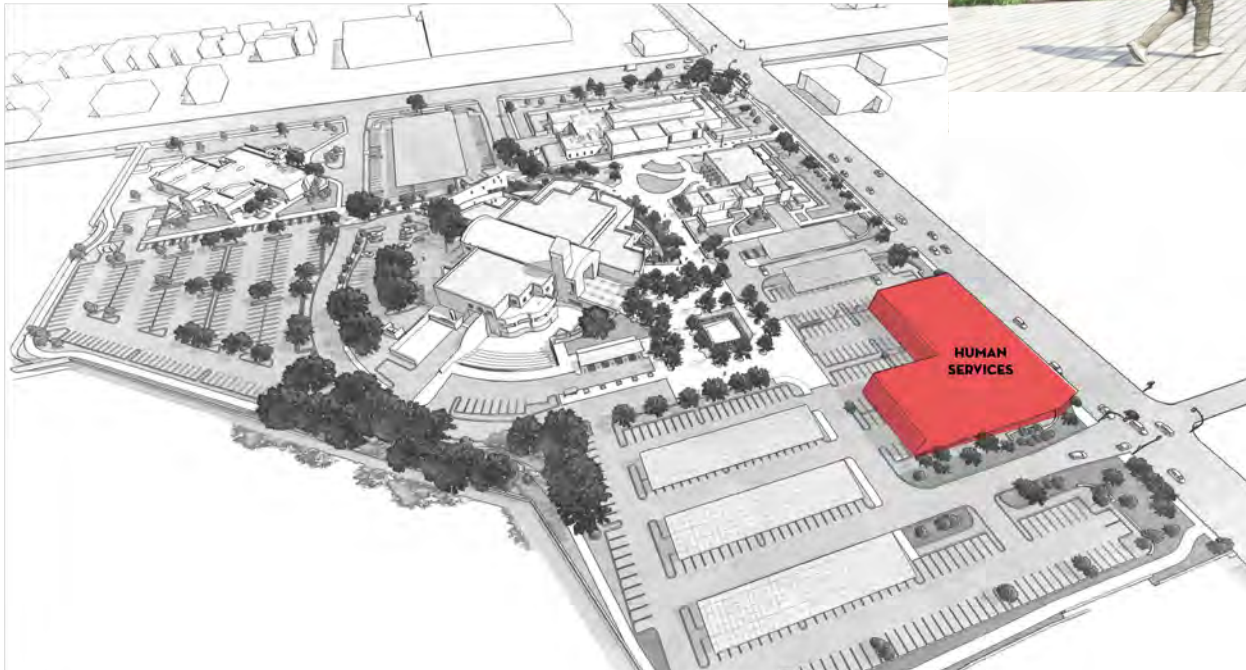
- 1 Safer and more enjoyable access to Library from the south parking lot
- 2 Parking reoriented, no crossing through gravel parking islands
- 3 Drop-off driveway converted to enlarged pedestrian plaza
- 4 Reduced walking distance to relocated Edna Arts and Pyle entrances from adjacent parking areas.
- 5 Safer access to Edna Arts and Pyle, no crossing main access drives
- 6 Less underutilized parking
- 7 Potential to open a second public entrance at the North side of the building if south lot becomes too congested
- 8 Safer access to Museum from north parking lot, no crossing secondary access drive

HUMAN SERVICES BUILDING

- Dedicated facility to consolidate all Human Services work groups
- Separate ground level entrances for different user groups
- Secure design that separates staff work areas from client engagement areas
- Welcoming environments (not sterile or institutional)
- Clear Signage and wayfinding
- Modular / Flexible design so space can change with needs



Conceptual view of the New Human Services Building Entry Plaza.



Conceptual bird's eye view showing the proposed New Human Services Building location.



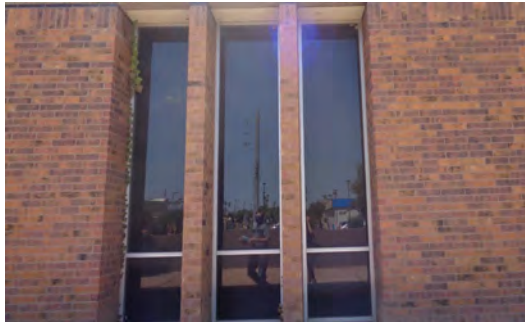
Conceptual bird's eye view of landscape buffer at the south campus perimeter.

HUMAN SERVICES BUILDING

- Two-story, 50,000 square foot building at Rural Rd. and Laguna Dr.
- Space for future expansion under second level overhang
- One-story versus two-story building
- Facade materials will complement existing material palette

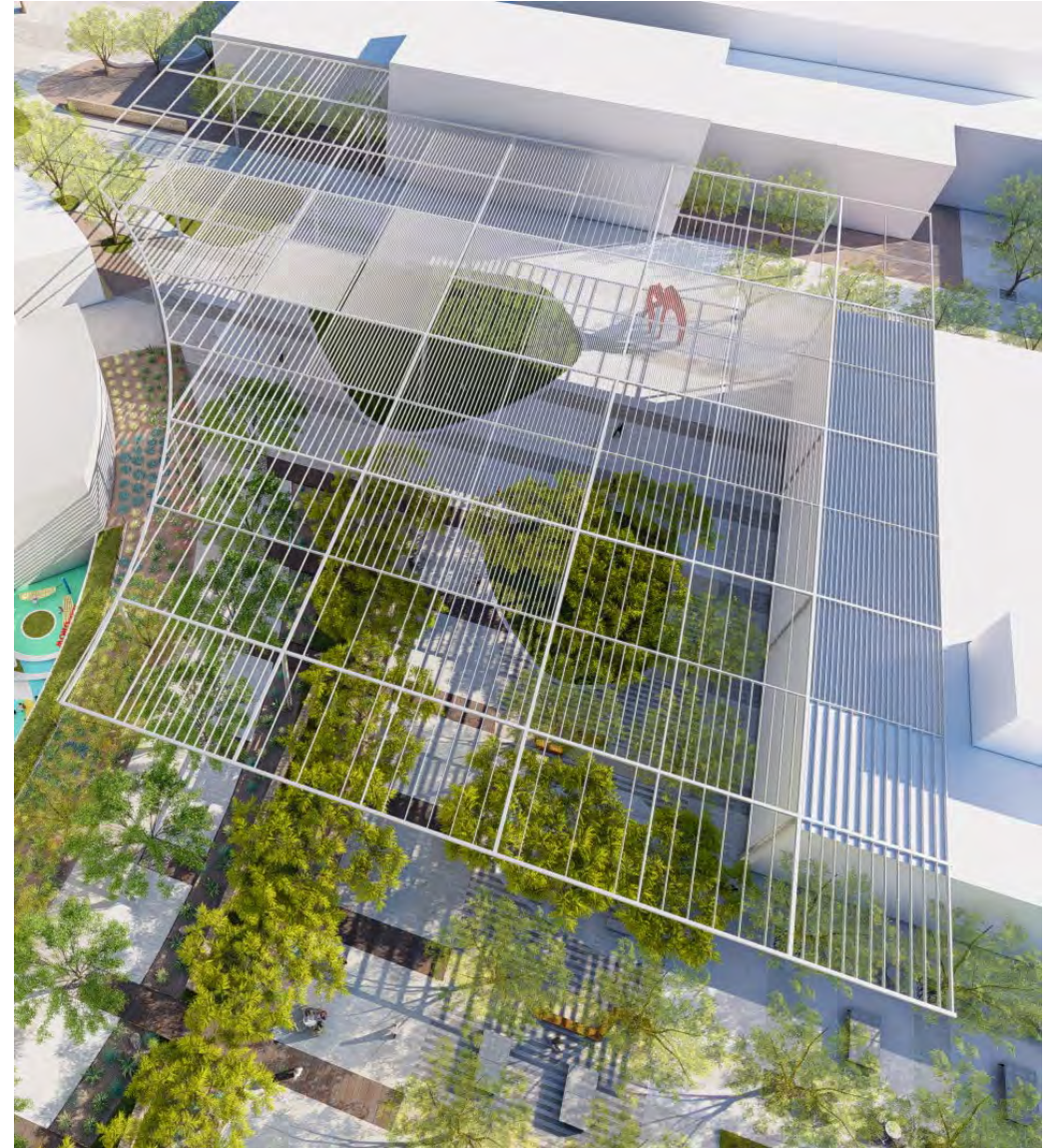


Conceptual view of the New Human Services Building along Rural Road showing intent to reduce visual impact.



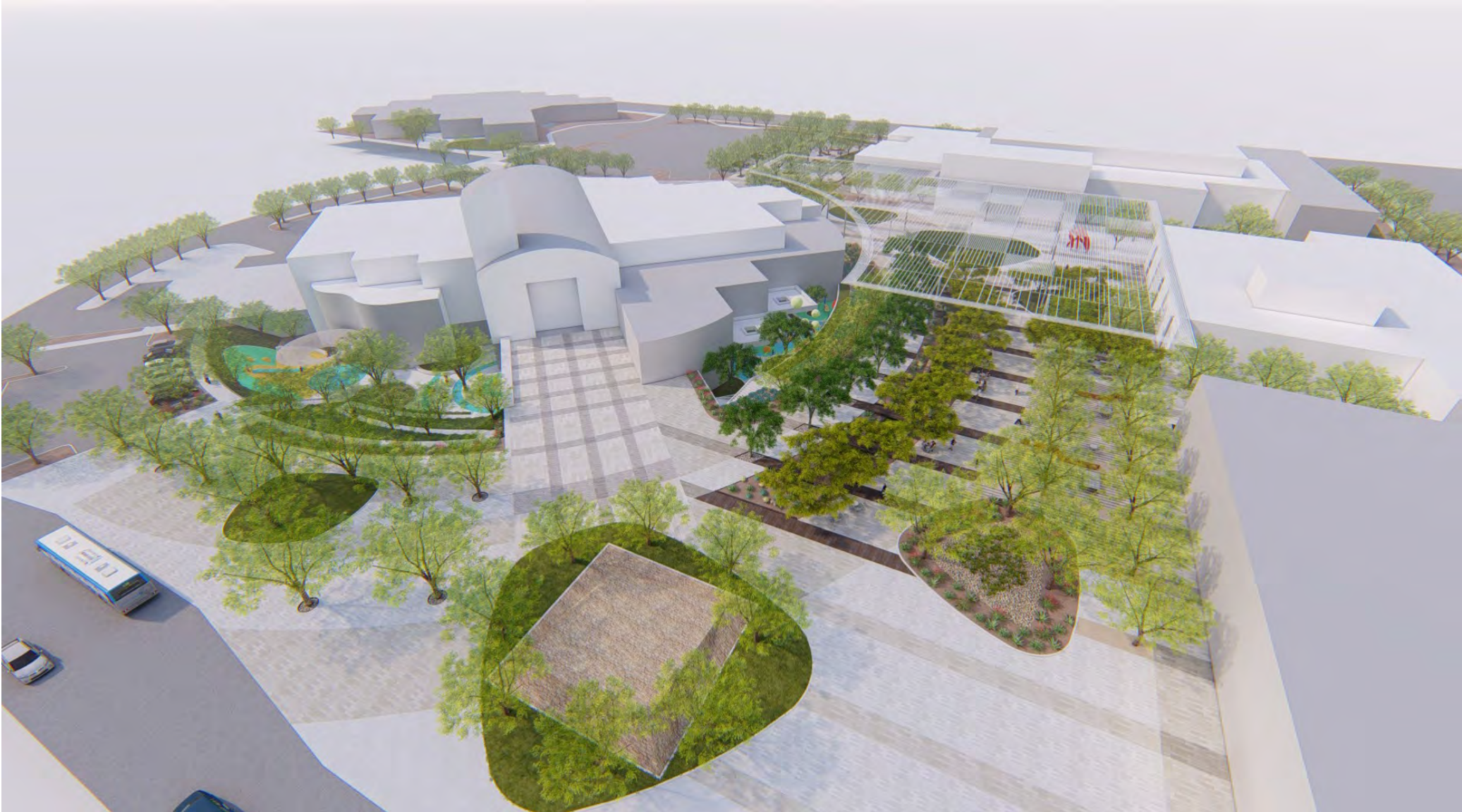
SHADE CANOPY

- Increasing shade and outdoor comfort was a top priority of both public and staff
- More comfortable and useable outdoor space for concerts, events, outdoor programs
- Opportunities to integrate lighting, sound, signage, and wayfinding elements
- Modular and expandable



CAMPUS LANDSCAPE

BIRDSEYE



CENTRAL PLAZA

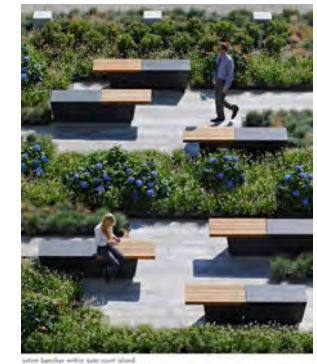
design approach:
URBAN FOREST

Program:

- Reading Rooms
- Outdoor Classroom
- Mental Breaks (Access to Nature)
- Outdoor Work
- Programmable Event Space

Design Features:

- Shaded Corridors
- Wildlife Habitat
- Biodiversity
- Water Harvesting
- Refined and Organized
- Welcoming Lighting



CAMPUS LANDSCAPE

CENTRAL PLAZA



CAMPUS LANDSCAPE

EVENT PLAZA



SOUTH SUNKEN COURT

design approach:

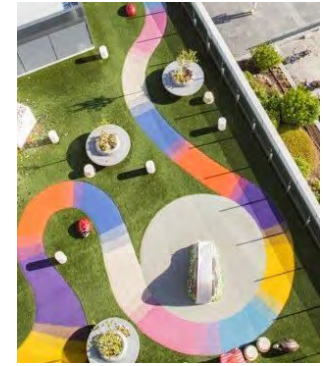
EXPLORE-A-STORY GARDEN

Function:

- Exploratory Play
- Nature Play
- Storytime
- Performance / Stage
- Destination

Design Features:

- Dense Shade - Vegetation + Structure
- Integrated Art
- Colorful
- Multi-Generational
- Visual Landscape



SOUTH SUNKEN COURT CONCEPT



CAMPUS LANDSCAPE

EXPLORE-A-STORY GARDEN



NORTHERN SUNKEN COURT

design approach:
CANYON GARDEN

Function:

- Children's Garden
- Exploratory Play
- Independent Reading
- Group Storytime
- Art Display
- Light Display

Design Features:

- Secured Entry from Above
- Integrated Shade
- Integrated Art
- Integrated Lighting
- Children's Art Display
- Integration of Nature
- Text as Art | Shade



CAMPUS LANDSCAPE

CANYON GARDEN



SOUTHERN & RURAL STREETScape

design approach:

BOTANIC 'PARK'WAY

Function:

- Mental Breaks (Access to Nature)
- Stroll / Meander
- Fitness
- Education - Flora + Fauna

Design Features:

- Botanic Garden
- Biodiversity
- Shaded Pathway
- Stormwater Collection + Filtration
- Organic Forms
- Integrated Wayfinding
- Connects Program
- Access to Trail Nodes



CAMPUS LANDSCAPE

BOTANIC 'PARK'WAY



CAMPUS LANDSCAPE

BOTANIC 'PARK'WAY



LOW-IMPACT DEVELOPMENT



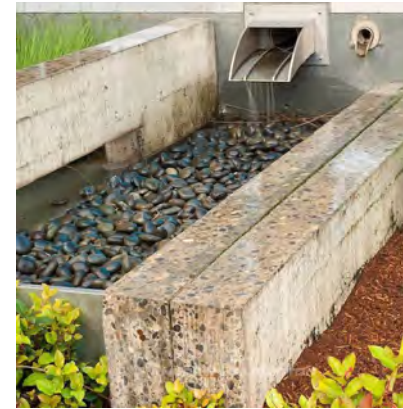
Rain Garden
Directing water to planting



Permeable Pavement
Surfacing that allows for surface-water penetration and filtration



Vegetated Swale
Linear landscaped bio-retention areas capture surface storm-water from adjacent paved surfaces

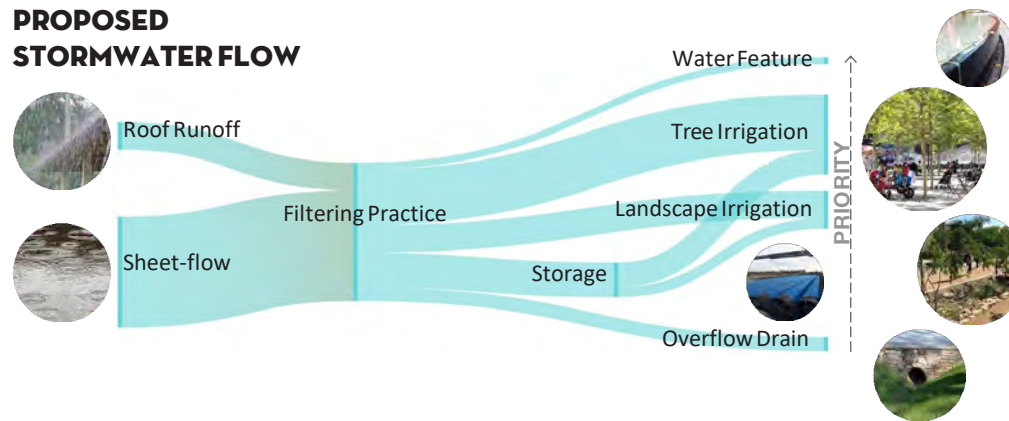


Rooftop Disconnection
Daylight roof storm-water into vegetated temporary retention and conveyance

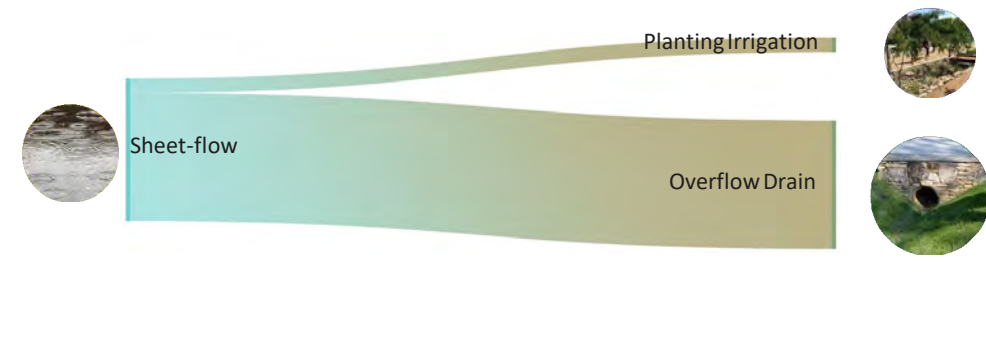


Native Plantings
Low water use plant material will be utilized

PROPOSED STORMWATER FLOW



CONVENTIONAL STORMWATER FLOW



**Online comment open
through May 16
tempe.gov/Forum**

Next Steps

- At the end of the comment period, the provided remarks will be compiled with previous comments and included in the appendix of the Master Plan report.
- The Community Center Campus Master Plan will be finalized and provided to future project teams as a starting point for future phases of Community Center Campus improvements.

Thank you!