

# 2021 Solid Waste Rate Study

Tempe City Council  
Work Study Session  
April 8, 2021





Safe & Secure  
Communities

1.27 - City Infrastructure and Assets



Strong Community  
Connections

2.02 - Customer Service Satisfaction



Sustainable Growth  
& Development

4.04 - Solid Waste Landfill Diversion

4.12 - Composting



Financial Stability  
& Vitality

5.01 - Quality of Business Services



# Rate Study Introduction



# Solid Waste Services



Residential



Commercial Front Load



Commercial Roll-off



Compost/Inert Yard



Alley Maintenance

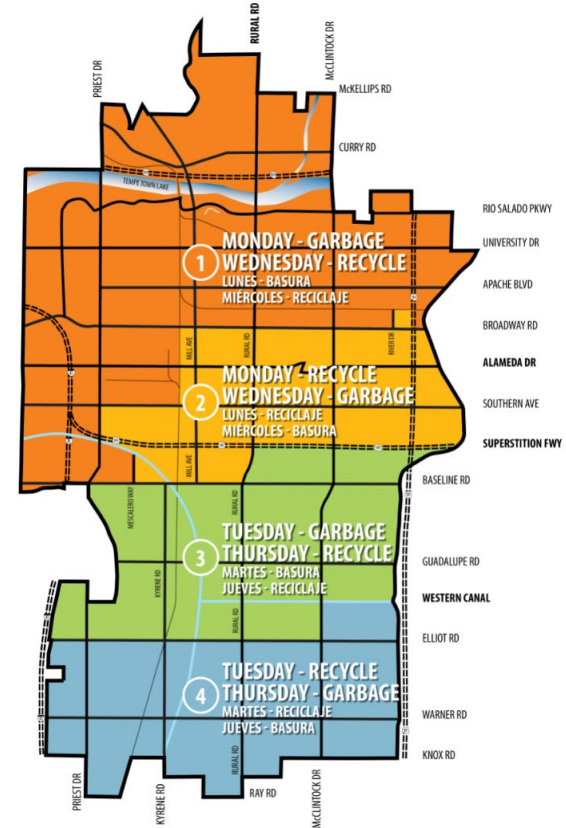


Household Products  
Collection Center

# Residential Service



- Garbage and recycling
- Volume-based container pricing
- Green organics program



# Residential Service Continued



- Additional Services
  - Uncontained garbage and green organics
  - Household Products Collection Center
  - Zero Waste Day events
  - Self-haul to transfer station



# Commercial Service



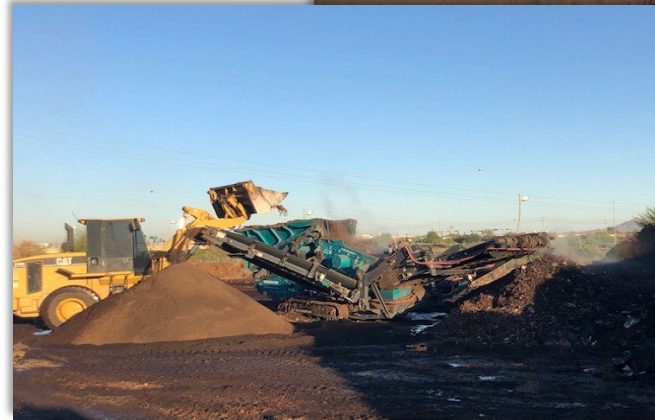
- Garbage and recycling
- Roll-off
- Special events garbage and recycling



# Compost/Inert Yard (Pilot)



- Compost
- Inert





# Alley Maintenance



- Civil asset and public utility easement/right-of-way
- Preventative and reactive maintenance
- City Code enforcement
- Abatement



# Elements of the Rate Study



## Revenue requirements

- Operating costs
- Capital costs
- Financial policies
- Level of service



## Cost allocation

- Evaluate available data
- Service delivery model
- Review billing units
- Compare results to current revenue



## Rate design

- Evaluate objectives
- Identify structures
- Customer impacts

Public involvement and community engagement

# Customer Engagement



- Public Involvement Plan
  - Public Comment Surveys
  - Public Meetings
- Regular updates to Council
  - Public Input Summary



<b>Utility Rate Study Public Meetings</b>		<b>Junta Pública Sobre El Estudio De Tarifas De Servicios Públicos</b>
<small>We need your input! Participate in the utility rate study process. Choose one of two opportunities to attend, the same material will be available on both dates.</small>		<small>¡Necesitamos tu opinión! Participa en el proceso. Elige una fecha para asistir, el mismo material estará disponible en las dos fechas.</small>
<b>Tuesday, April 20 noon</b>	Or	<b>Tuesday, April 20 6:00 p.m.</b>
via Webex		por WebEx



# Rate Study Timeline



# Conclusion

