

Draft
Parks & Recreation
Master Plan
Public Meeting

March 16, 2021



Tempe

Making waves in the desert

- Overview
- Plan format
- Navigating the plan
- Guiding principles
- Draft plan strategies
- Next steps & timeline
- Story Map dry run
- Questions





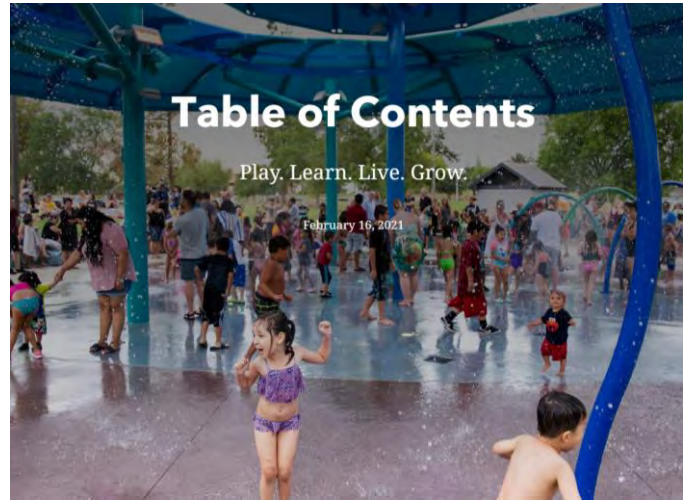
What is a parks & recreation master plan?

- Comprehensive, 10- year planning document
- Covers parks, facilities & programming
- Evaluates & recommends
- Shapes delivery of services
- Provides guidance & policy direction
- Identifies short-term strategies to achieve long-term success





- Online, interactive & explore-able guide
- Tells the story through maps, text & media
- Engages & enhances the user experience
- Visually attractive & user-friendly format
- Print option



ACKNOWLEDGEMENTS

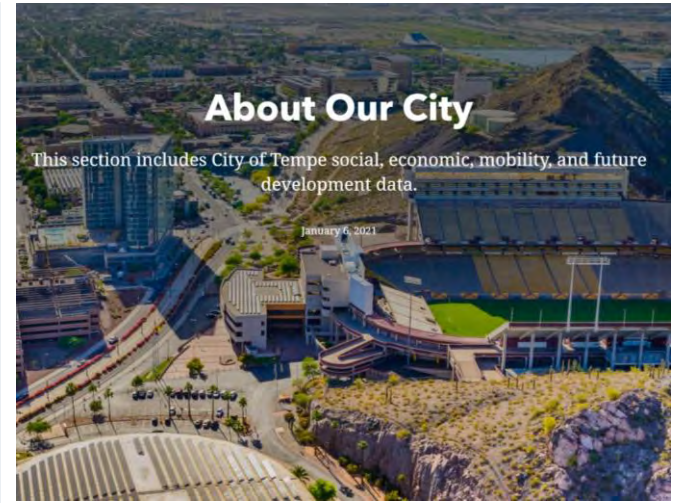
Mayor & City Council:

- Corey D. Woods, Mayor
- Randy Keating, Vice Mayor
- Jennifer Adams, Councilmember
- Robin Arredondo-Savage, Councilmember
- Doreen Garlid, Councilmember
- Lauren Kuby, Councilmember
- Joel Navarro, Councilmember

City Leadership:

- Andrew Ching, City Manager
- Ken Jones, Deputy City Manager
- Steven Methvin, Deputy City Manager
- Keith Burke, Community Services Director





AGE

People use different recreation facilities at different ages. Field sports, team sports, and physical challenge sports are most popular with people under age 65.

Tempe's population is younger than most jurisdictions in the Phoenix Metropolitan Area. In part, this is due to the large number of students at Arizona State University (ASU). ASU provides recreation facilities for its students, & ASU students use City parks & recreation facilities. ASU facilities are not considered in this Master Plan, but students at ASU use City facilities.

Median Age by Jurisdiction

Jurisdiction	Median Age
Scottsdale	45.9
Maricopa County	36
San Diego	35.9
Aliso Viejo	35.3
Chandler	33.3
Phoenix	32
Tempe	28.8

Tempe Age Breakdown

Age Group	Percentage
0-17	19%
18-24	20%
25-34	15%
35-44	10%
45-54	10%
55-64	7%
65+	19%

Median Age: 28.8



Tempe Parks & Recreation Master Plan Update

The Tempe Parks & Recreation Master Plan Update includes Principles & Strategies to guide management, programming & development of Tempe's parks & facilities to the community. Click on any section to view or print it.

The plan is a collection of chapters



1 How to Use This Plan



2 Acknowledgements & Table of Contents



3 Introduction



4 Parks & Recreation Master Plan Process



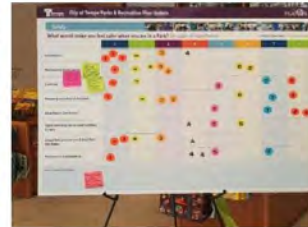
5 About Our City



6 Our Parks and Recreation System Today



7 A Parks & Recreation System for Our Future



8 Plan Principles & Strategies



9 Implementation & Finance



Tempe Parks & Recreation Master Plan Update

The Tempe Parks & Recreation Master Plan Update includes Principles & Strategies to guide management, programming & development of Tempe's parks & facilities to the community. Click on any section to view or print it.

Select a chapter to view it



1 How to Use This Plan



2 Acknowledgements & Table of Contents



3 Introduction



4 Parks & Recreation Master Plan Process



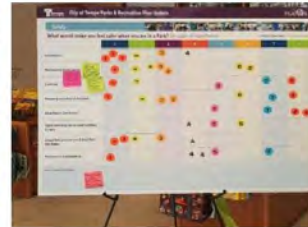
5 About Our City



6 Our Parks and Recreation System Today



7 A Parks & Recreation System for Our Future



8 Plan Principles & Strategies



9 Implementation & Finance



Tempe Parks & Recreation Master Plan Update

← 06 / 09 →

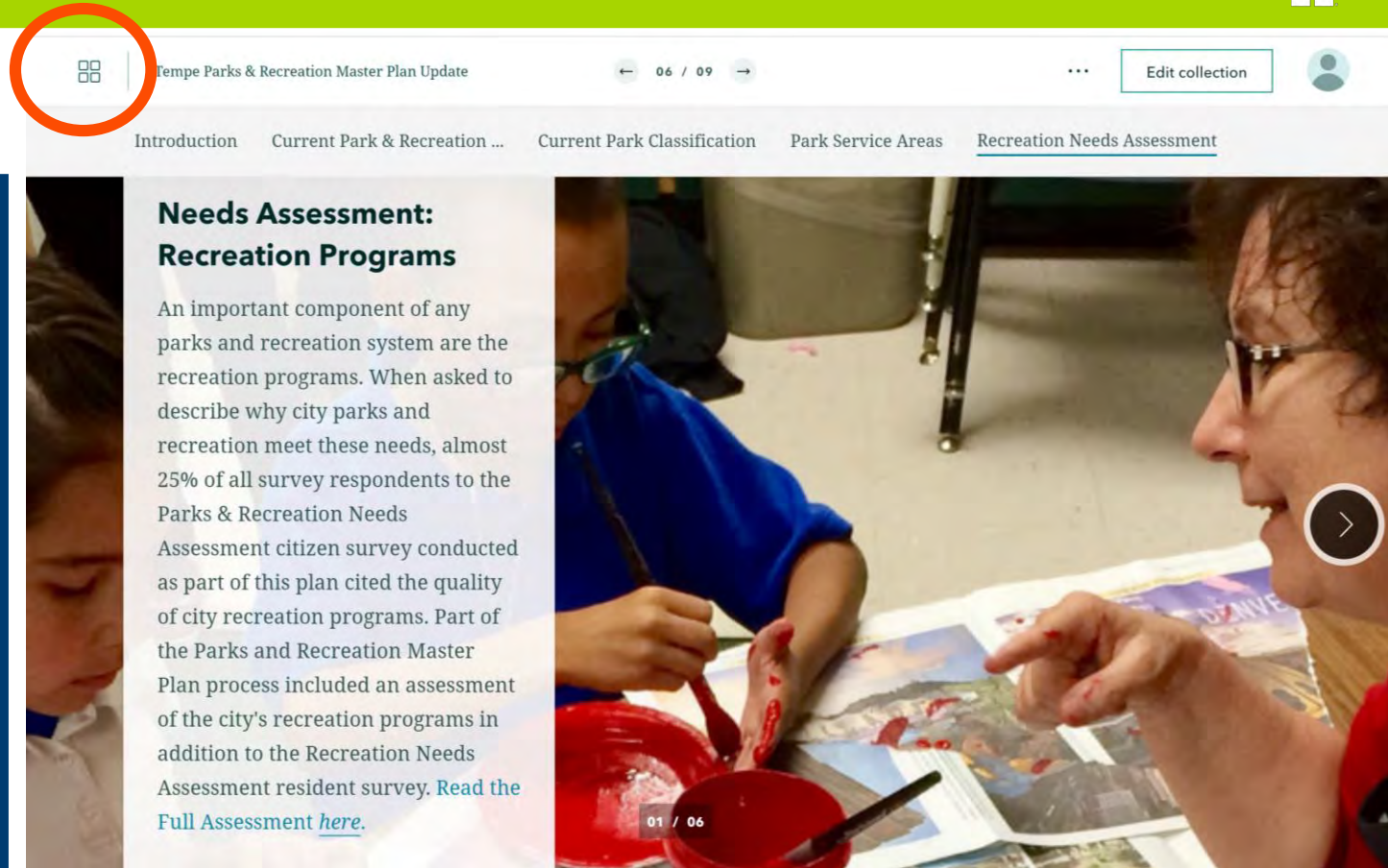


Edit collection



Scroll down to
explore and
reach specific
content





The screenshot shows a digital document viewer interface. At the top, there is a navigation bar with a grid icon circled in orange, the title 'Tempe Parks & Recreation Master Plan Update', a page indicator '06 / 09', a three-dot menu, and an 'Edit collection' button. Below the navigation bar is a breadcrumb trail: 'Introduction' > 'Current Park & Recreation ...' > 'Current Park Classification' > 'Park Service Areas' > 'Recreation Needs Assessment'. The main content area is split into two columns. The left column contains a text block with the heading 'Needs Assessment: Recreation Programs' and a paragraph of text. The right column contains a photograph of a woman and a child painting a map. A circular navigation arrow is visible in the bottom right corner of the photo.

Tempe Parks & Recreation Master Plan Update

06 / 09

Edit collection

Introduction Current Park & Recreation ... Current Park Classification Park Service Areas Recreation Needs Assessment

Needs Assessment: Recreation Programs

An important component of any parks and recreation system are the recreation programs. When asked to describe why city parks and recreation meet these needs, almost 25% of all survey respondents to the Parks & Recreation Needs Assessment citizen survey conducted as part of this plan cited the quality of city recreation programs. Part of the Parks and Recreation Master Plan process included an assessment of the city's recreation programs in addition to the Recreation Needs Assessment resident survey. [Read the Full Assessment here.](#)

01 / 06

Select grid to return to collection of chapters



Tempe Parks & Recreation Master Plan Update

← 06 / 09 →

... Edit Collection



Introduction

Current Park & Recreation ...

Current Park Classification

Park Service Areas

Recreation Needs Assessment

Select any
plan topic to
navigate
within
chapters

Needs Assessment: Recreation Programs

An important component of any parks and recreation system are the recreation programs. When asked to describe why city parks and recreation meet these needs, almost 25% of all survey respondents to the Parks & Recreation Needs Assessment citizen survey conducted as part of this plan cited the quality of city recreation programs. Part of the Parks and Recreation Master Plan process included an assessment of the city's recreation programs in addition to the Recreation Needs Assessment resident survey. [Read the Full Assessment here.](#)



01 / 06



Tempe Parks & Recreation Master Plan Update

← 06 / 09 →



Edit collection



[Introduction](#)

[Current Park & Recreation ...](#)

[Current Park Classification](#)

[Park Service Areas](#)

[Recreation Needs Assessment](#)

Clicking on
arrows
displays more
information
on a topic

Needs Assessment: Recreation Programs

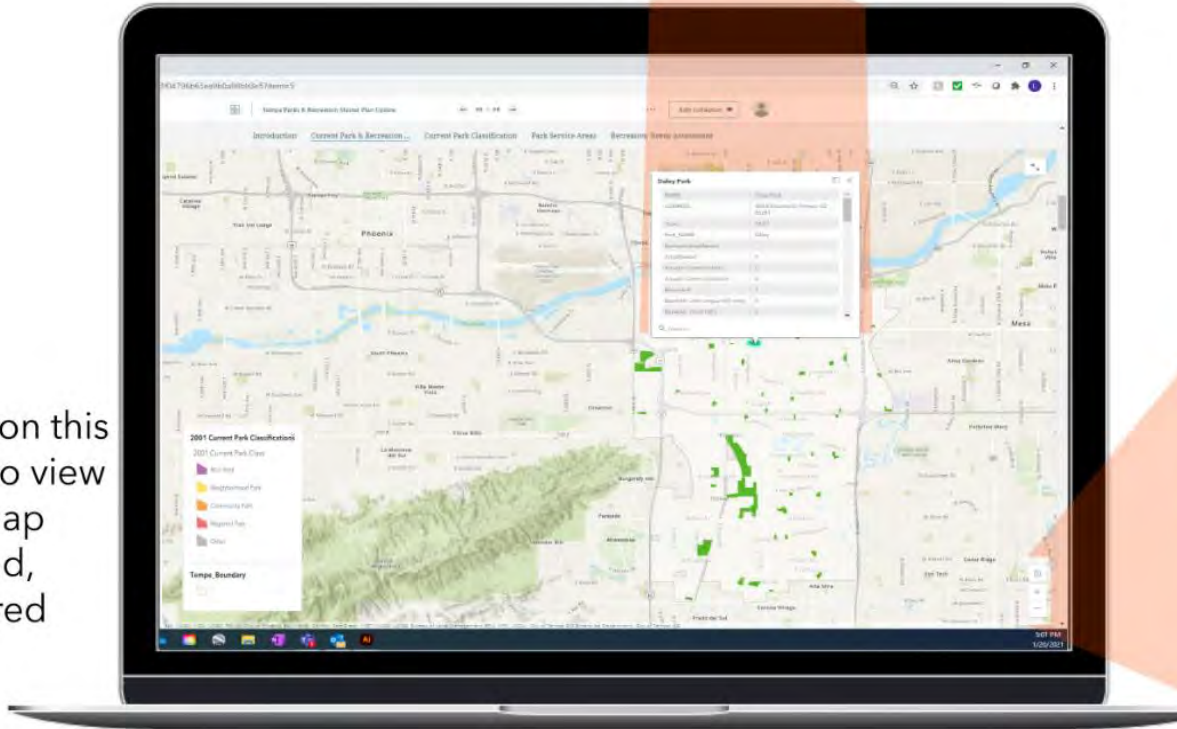
An important component of any parks and recreation system are the recreation programs. When asked to describe why city parks and recreation meet these needs, almost 25% of all survey respondents to the Parks & Recreation Needs Assessment citizen survey conducted as part of this plan cited the quality of city recreation programs. Part of the Parks and Recreation Master Plan process included an assessment of the city's recreation programs in addition to the Recreation Needs Assessment resident survey. [Read the Full Assessment here.](#)



01 / 06

Click on a shape on the map to learn more about it.

Click on this icon to view the map legend, pictured here.



- Click on the "+" to make the map larger.
- Click on the "-" to make the map smaller.
- Click on the house icon to return to the original map extent.

City of Tempe Strategic Priorities



Financial Stability
& Vitality



Quality of Life



Safe & Secure
Communities



Strong Community
Connections



Sustainable
Growth &
Development



Parks & Recreation Master Plan Guiding Principles



Inclusion



Resilience



Strategic



Sustainability



Providing community access and opportunity regardless of color, gender orientation, age, income, or ability.



Tempe welcomes you as you are.



www.tempe.gov/diversity

email: diversity@tempe.gov

© 2018 City of Tempe



- Implement city's ADA Transition Plan.
- Design & construct a fully accessible and inclusive play area.
- Consider working with a social justice entity to support community engagement.
- Conduct an equity study to impact park distribution and access.
- Conduct an equity study and based on the study, develop a service philosophy that promotes equitable recreation program and facility.
- Ensure that the results of equitable studies & community input are incorporated timely.



Parks that help communities thrive despite disruptive environmental, societal and health events.



- Implement the Urban Forestry Master Plan to reduce urban heat island effect by increasing shade.
- Use parks & recreation sites as key gathering areas & hubs for community resilience & emergency management.
- Design & retrofit parks to respond to climate change projections to build resilience against increasing heat.
- Explore partnership opportunities through community gardens to positively influence food islands.
- Implement & adopt Cool materials for use, as well as the continued incorporation of heat & health data into park design.
- Enhance the connection between the community & parks & recreation through non-profit & community-based organization partnerships.

A flexible system that focuses on continuous improvement.



- Support & participate in the city's approach to addressing the impacts of homelessness in parks & preserves across various departments.
- Implement recently completed planning efforts, including the Rio Salado Master Plan, Kiwanis Park Management Plan & the Aquatics Needs Assessment.
- Provide adequate levels of staffing & other resources to maintain existing park & recreation facilities.
- Consider lighting unlit fields to extend their use time.
- Establish focus groups, surveys & user evaluations that create opportunities for the community to provide input in the design of recreation programs & facilities.
- Offer online facility reservations for fields, courts, classrooms, etc.



Parks and recreation systems and services that enrich and sustain the community, nurture the environment and contribute to the economy.



- Reduce Green House Gas (GHG) emissions by continuing to invest in energy efficiency.
- Implement city's Urban Forestry Master Plan through the addition of trees, with an emphasis on equity.
- Implement & update the city's Integrated Pest Management (IPM) Program.
- Research & implement Organic Land Management principles, such as using compost & organic fertilizers.
- Pilot SITES certification for a future park project.
- Look for opportunities to support pollinators & native species; consider options to pilot food forests and native pollinator gardens.



- March: Public review & comment period
- March & April: Boards & Commissions; City Council Work Study Session
- May: Finalize plan
- June: Formal plan adoption



Questions