



STORMWATER BEST MANAGEMENT PRACTICES FOR RESTAURANTS

Prevent stormwater pollution.
Only rain down the storm drain.



Questions? Call Tempe 311
at 480-350-4311.

tempe.gov/stormwater



Ensure no trash
is around
or on top of
trash containers.

Keep
tallow bins
under cover,
away
from rain.

Keep trash can,
dumpster and tallow bin
lids closed at all times.

In the event of a spill,
protect storm drains
and inlets.

Keep bins away
from storm drains.



Sweep or vacuum saturated
absorbents after use and dispose
of in a trash container.



Municipal Utilities Department
Water Utilities Division
Environmental Services Section

Provide routine training for all employees on the following best management practices (BMPs).

Trash and Storage

- Keep trash can and dumpster lids closed at all times.
- Request service when trash containers are nearly full.
- Ensure there is no trash around or on top of trash containers.
- Ensure all liquids are stored in sealed containers before disposing of them in trash cans and dumpsters.
- Check waste receptacles for leaks, regularly.
- Store any hazardous materials (cleaners, paint, oil, etc.) indoors or under cover, away from rain.



Tallow Bin (Used Fryer Oil Bin)

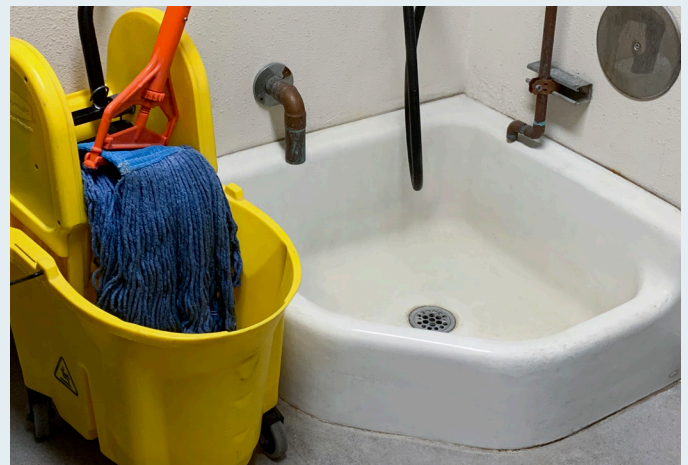
- Keep bin lids closed at all times.
- Request service when bins are nearly full.
- Keep area around the bins clean.
- Prevent spillage by carefully transferring used oil into bins and promptly cleaning up spills.
- Use a spill pad or secondary containment around bins, if possible.
- Keep bins under cover, away from rain.
- Keep bins away from storm drains.

Spills

- Develop and post clean up procedures for spills. Be sure to follow clean up instructions on the label of the product or in the Safety Data Sheet (SDS), when provided.
- Keep absorbent materials such as pads, cat litter, sawdust, etc., easily available and easily accessible to soak up spills.
- Sweep or vacuum saturated absorbents after use and dispose of in a trash container.
- Never use a hose to clean up spills that occur outside.
- In the event of a spill, protect storm drains and inlets.

Cleaning

- Floor mats and equipment should be cleaned indoors. Wash water should be disposed of into a drain connected to the wastewater collections system (e.g., mop sink, floor drain, etc.).
- Always dispose of mop water into a mop sink or floor drain connected to a grease control device.
- Patios, sidewalks and other hard outdoor surfaces should be swept, and debris collected in a dustpan and disposed of in a trash container.
- Consider hiring a professional cleaning company for specialized cleaning needs (e.g., fryer hoods, carpets, ice machines).
- No wash water should flow outdoors.
- Scrape debris from dishes and cookware into a trash container before washing.
- Ensure grease control device(s) are serviced at the required frequency.



Consider posting signage, in all languages spoken by staff, outlining proper BMPs specific to each work area.