

# Clark Park Community Meeting

Tuesday, Nov. 10, 2020



# Clark Park and Aquatic Center Master Plan

Tempe, Arizona

Community Outreach Meeting #2  
November 10<sup>th</sup>  
Listening Session



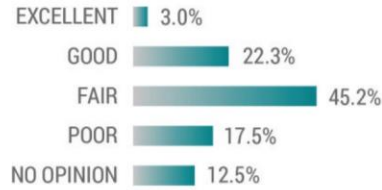
# COMMUNITY OUTREACH PARK AND RECREATION SUMMARY

# CLARK PARK IMPROVEMENTS SURVEY RESULTS: THE PARK



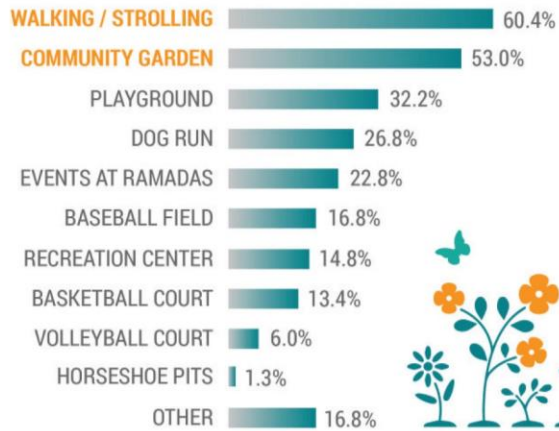
**44%** RESIDE WITHIN 1 MILE  
**21%** RESIDE WITHIN 2 MILES  
**35%** RESIDE WITHIN 3 MILES +

HOUSEHOLD LOCATION FROM CLARK PARK



HOW WOULD YOU RATE THE QUALITY OF THE CURRENT CLARK PARK AMENITIES?

## WHAT ARE THE PRIMARY WAYS YOU OR MEMEBERS OF YOUR HOUSEHOLD UTILIZE THE CLARK PARK AMENTIES AND PROGRAMS



## WHAT KINDS OF NEW ACTIVITIES WOULD YOU LIKE TO SEE AT THE PARK?

- Continue the seasonal farmers market
- Family gathering spaces
- Create an amphitheater and have events like concerts
- Outside yoga + Fitness
- Frisbee Golf
- Plaza style skateboard/bike area
- New playground with a cover and the new surface
- A splash pad
- Space for sharing of music and arts
- New restrooms, updated playground, more shade.
- Pickleball courts!
- More use of sidewalks to navigate the interior of the park, for parents with strollers or kid wagons

“Clark is not our closest park but it offers a lot - little league, garden and CSA pick up, dog park, playground, open space, community events. **The bathroom is horrible and has been for the nine years we’ve lived here.**”

“Great except no pool. Garden is great for the few that are really into gardening. Baseball corner is well used. Dog park is used. **any homeless folks.**”

“I use the park mostly for dog walking and dog park. I would **like to see the park used more by families and residents.**”

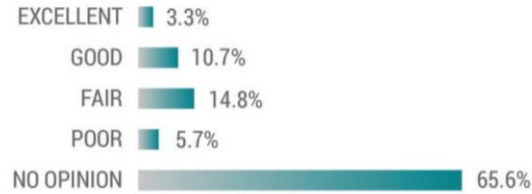
“Look and feel is a bit worn down and landscaping is not particularly inviting. **Love the community garden though.** The Clark building can be updated and used for many more purposes than it currently serves.”

“This could be a great park. It’s looking shabby and not maintained as well as Mitchell Park. Bathrooms that are in an isolated part of the park encourages drug use/sales and violence that come with that. **Lighting in and on sidewalks around park need to be addressed** as well has landscaping.”

# CLARK PARK IMPROVEMENTS SURVEY RESULTS: RECREATION CENTER

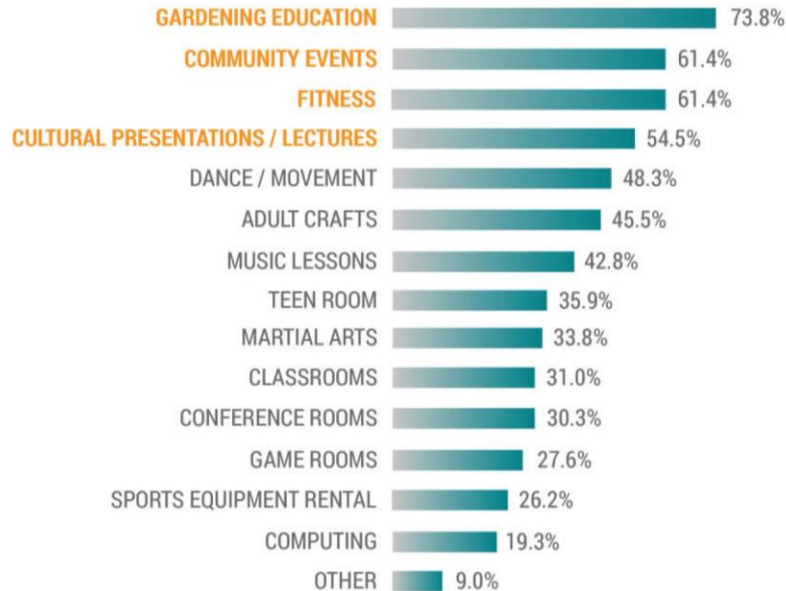


12.4% YES  
87.6% NO



DO YOU OR FAMILY MEMBERS IN YOUR HOUSEHOLD UTILIZE THE RECREATION CENTER FACILITY AT CLARK PARK?

OVERALL, HOW WOULD YOU RATE YOUR EXPERIENCE AT THIS FACILITY?



AS PART OF THIS PROJECT, WE WILL BE EXPANDING THE FUNCTION OF THE RECREATION CENTER. WHAT KIND OF USES OR PROGRAMS WOULD YOU LIKE TO SEE OFFERED?

## COMMUNITY DIALOG...

"Thank you for seeking community input."

"**Make it more open looking...**lots of glass and natural light during the day. Eliminate big block columns in front that block view in and out."

"I took yoga there years ago, it's dark and cramped. **Remove building and start over.** Incorporate outdoor space."

"**Community space for people to gather, meet.** Coffee kiosk"


"Could it be part of aquatic complex? **Why do they need to be separate entities?**"

"Can we utilize any tactical urbanism techniques to make an impact on the park sooner than a typical project? An art exhibit that lights up at night might be fun and refreshing for families to get to go see during these tough times."



## PARK PROGRAM SUMMARY:

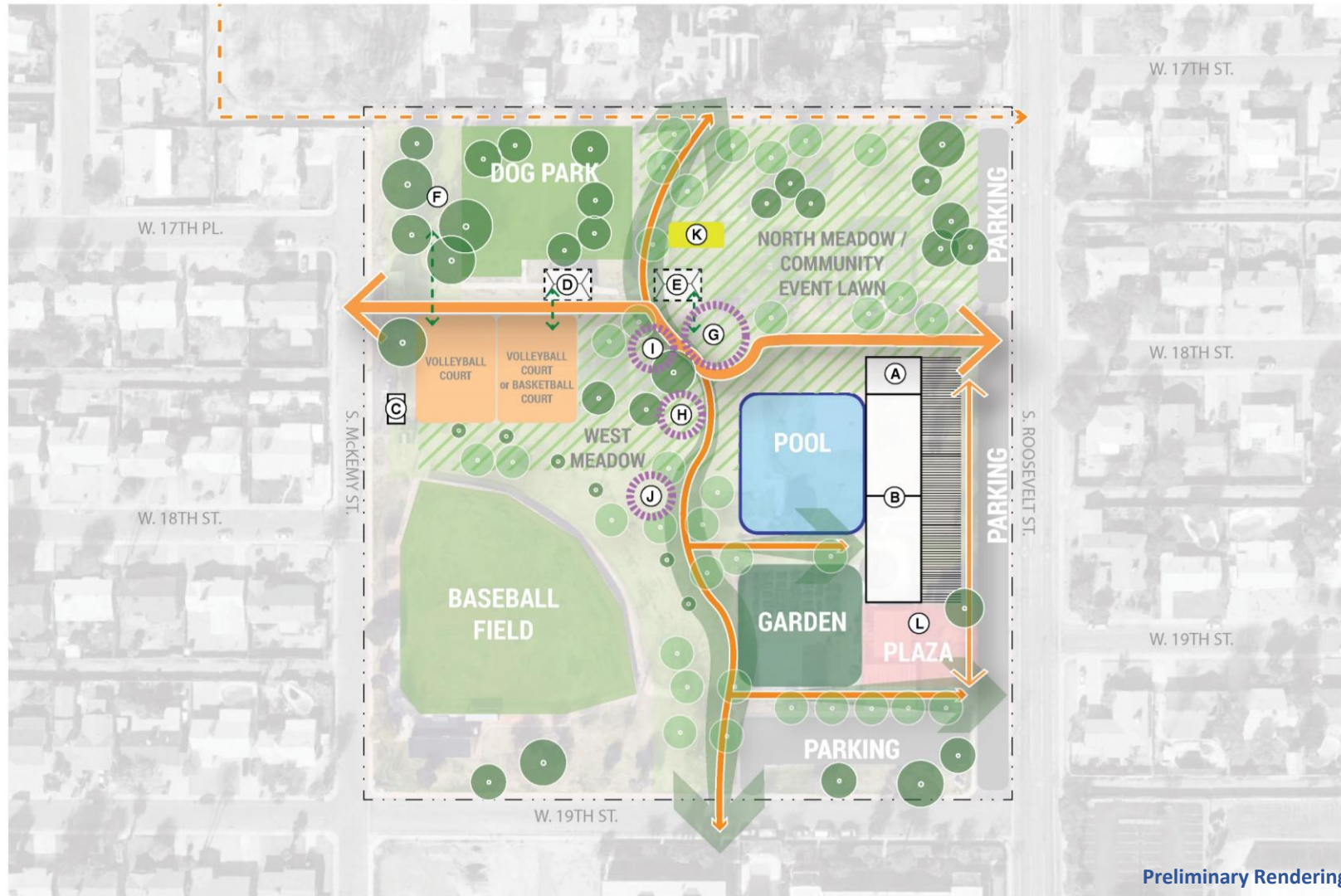
**BASED ON THE COMMUNITY OUTREACH RESULTS AND PROJECT BUDGET REVIEW,  
WE ARE RECOMMENDING A BASELINE PROGRAM FOR ALL OPTIONS:**

- A New Aquatic Facility
  - Locate the Community Garden within the Park
  - A new combination Pool House + Recreation Center with full demo of existing site buildings.
  - A new Playground Experience in a centrally located, more visible location.
  - Renovated or new Ramada(s)
  - Maintain the presence of the basketball and volleyball, however relocation may be suggested.
  - Dog Run remains as is
  - Baseball Field remains as is
  - Horseshoe Pits remain, however relocation may be suggested
  - Connectivity Improvements
  - Landscape Improvements
  - Community Event Lawn Space with relationship to Recreation Center
  - Renovated or New Restroom
- 

# DESIGN ALTERNATIVES + PROGRAMMING



# DESIGN ALTERNATIVE: THE COMMUNITY HUB



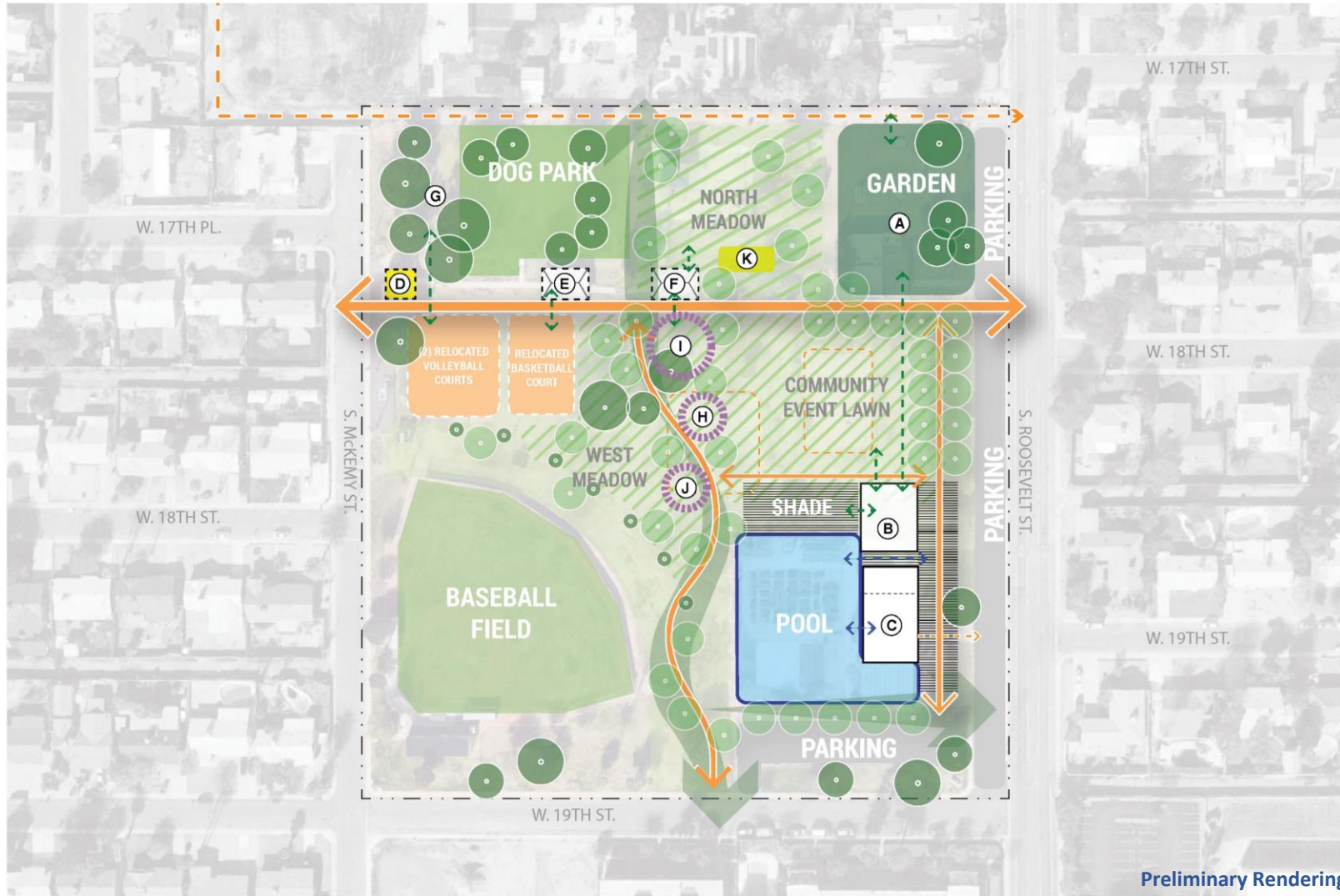
## "Alt – Garden Plaza"

Pool is shifted north slightly by the main pedestrian path. Aquatics and Recreation facilities are combined to hug adjacent pool. Garden stays at existing location gains multi-use community plaza. Pool inherits North Meadow views and Garden at the south. Formal community lawn is located on the north cre-

ating a flexible space / market space / gathering space / serving the garden and play. Strengthened north south connection along Roosevelt with extended architecture for shade. Courts moved west of park to create connection with restrooms and ramadas. New restroom location allows better access by all sport field/court users. Ample North and West Meadow and trail space.



# DESIGN ALTERNATIVE: THE GREAT LAWN



## LEGEND

THE ALLEY AS A WALKING PATH TO BE "ENHANCED" AND ADD LIGHT DASHED LINE TO INDICATE

ACTIVE RECREATION SPACES HAVE A RELATIONSHIP WITH RAMADA / GATHERING AREAS

- (A) GARDEN MOVES NORTH, NEW LOCATION WITH ACCESS TO ALLEY
- (B)(C) COMBINED RECREATION CENTER & AQUATIC FACILITY
- (D) NEW RESTROOM
- (E) RAMADA IMPROVEMENTS
- (F) RAMADA IMPROVEMENTS
- (G) SHADED GATHERING AREA WITH BBQ GRILLS
- (H)(J) PLAY WEAVES ALONG GREEN BELT
- (K) HORSESHOE

### "Alt – Aquatic Anchor"

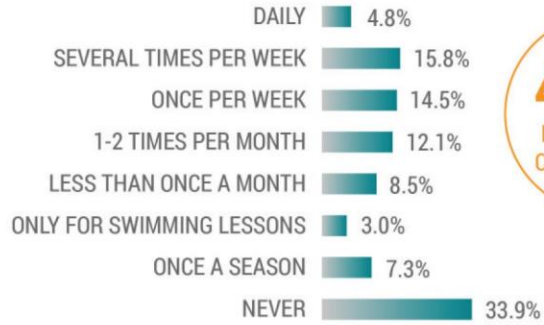
Combined recreation and aquatics facility located in the southeast corner of the park. The Community Garden moves to anchor the northeast corner and benefits from alley access. Greenway connection between multi-use fields with scattered play features. Shade extends west off of the Recreation Center

location creating a stage to host community events. A north/south link ties the garden to the Recreation Center. Basketball and Volleyball move to west side of park to create an 'activity area' with the Dog Park, new Restroom and upgraded Ramadas. Play is centrally located. Ample trail and Meadow space.

# COMMUNITY OUTREACH POOL SUMMARY

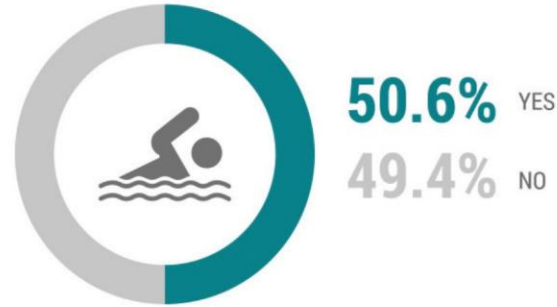


# CLARK PARK IMPROVEMENTS SURVEY RESULTS: AQUATICS

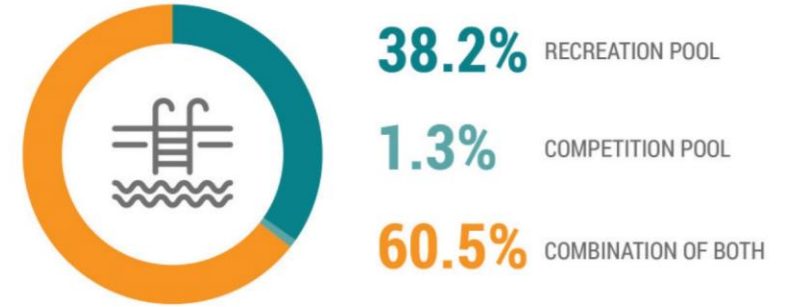


**47.2%**  
MORE THAN ONCE MONTH

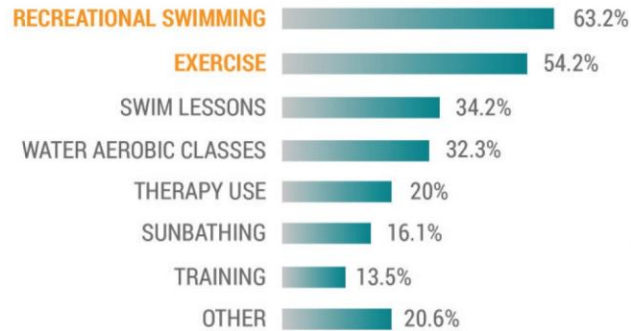
WHEN OPEN, HOW OFTEN DURING THE SWIMMING SEASON WOULD YOU OR MEMBERS OF YOUR HOUSEHOLD VISIT THE NEW CLARK PARK POOL FACILITY?



HOUSEHOLD UTILIZING SWIMMING POOLS OUTSIDE OF NEIGHBORHOOD

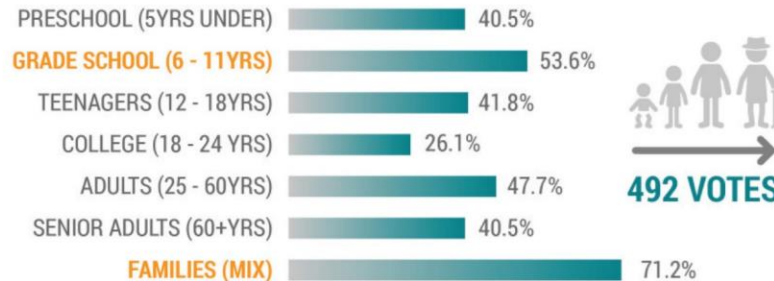


WHAT DO PEOPLE ENVISION AS THE MAIN PURPOSE OF THE NEW CLARK PARK AQUATIC FACILITY?



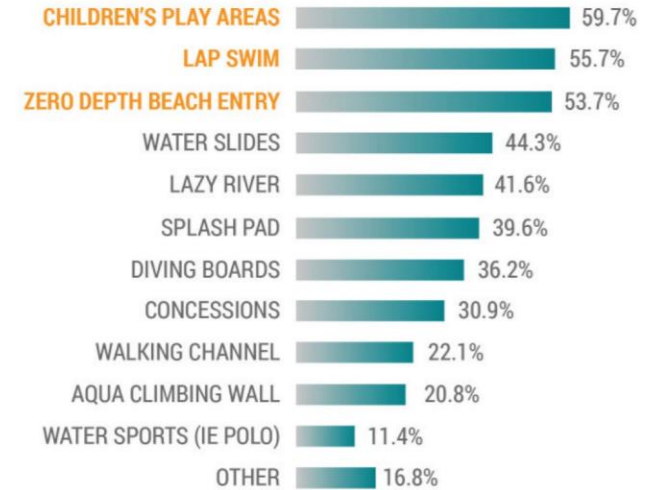
**394 VOTES**

FOR WHAT **USE** WHAT WOULD YOU MOST COMMONLY UTILIZE THE NEW CLARK PARK POOL?



**492 VOTES**

TO **WHOM** SHOULD A NEW FACILITY AND PROGRAMMING BE MOST GEARED TOWARD?



WHAT **ELEMENTS** WOULD YOU LIKE TO SEE AT THE NEW CLARK PARK POOL?

# AQUATIC PROGRAM SUMMARY

BASED ON THE COMMUNITY OUTREACH RESULTS AND PROJECT BUDGET REVIEW, WE ARE RECOMMENDING A BASELINE PROGRAM FOR ALL OPTIONS:

- **A combination of recreation and competition pool, with focus on recreation;**
- **4 lap lanes (75' length) for community fitness and swim lessons;**
- **A zero depth beach entry with water play for children;**
- **General swim areas for aerobics, play, and sport;**
- **Generous shade, including rentable ramadas;**
- **Ample deck space and additional shaded artificial turf picnic areas.**

IN ADDITION TO THE BASELINE PROGRAM, THE FOLLOWING PRELIMINARY LAYOUT OPTIONS LOOK AT POTENTIAL ADDITIONAL AMENITIES THAT COULD FURTHER TAILOR THE AQUATIC FACILITY FOR THE COMMUNITY.

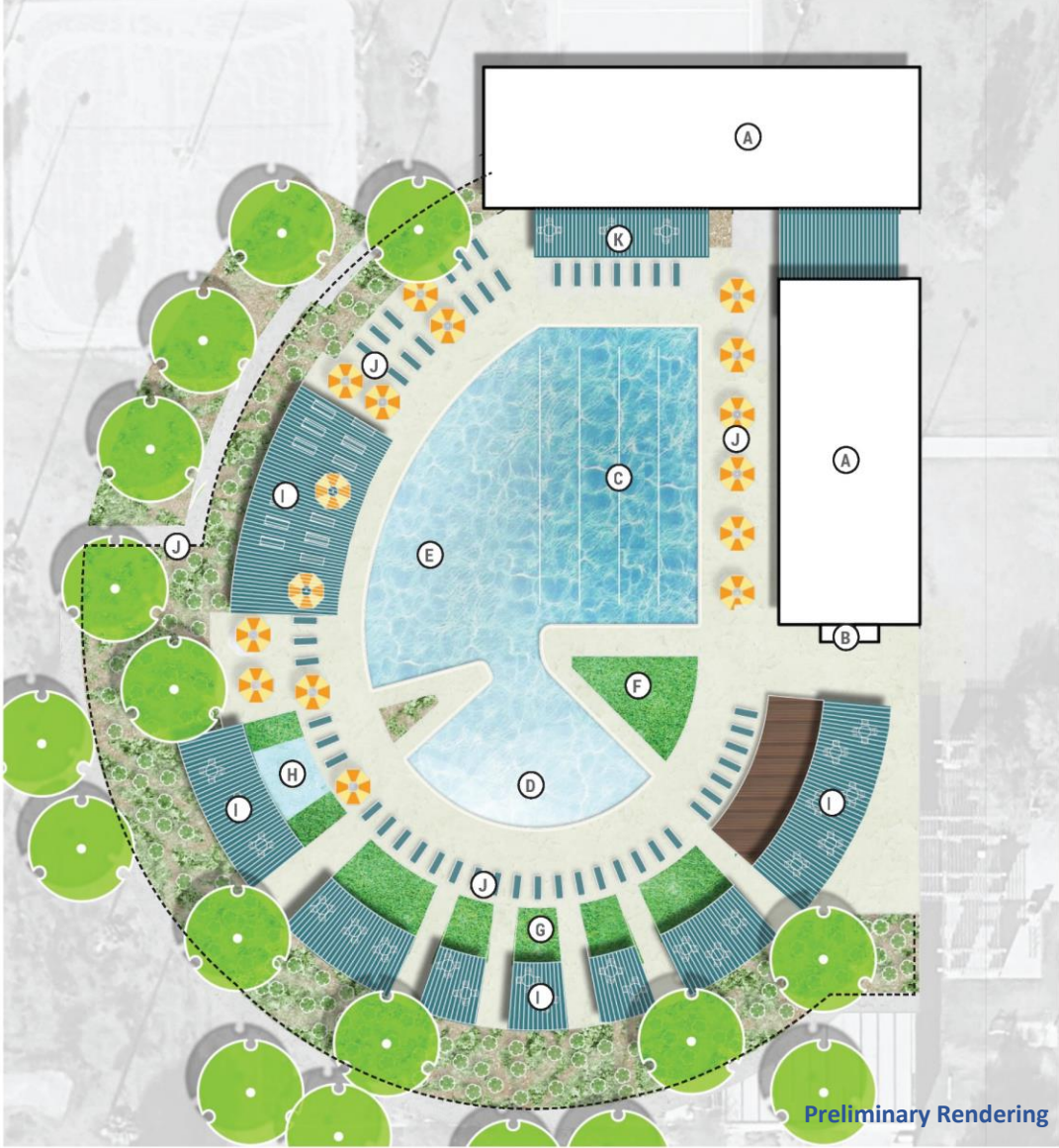
THE ABILITY TO ADD ONE OR MORE THESE AMENITIES WILL BE DEPENDENT ON OVERALL PROJECT BUDGET:

- **Family Retreat:** A separate toddler (0-4yrs) focused Splash Pad and additional shade and layout spaces to enhance the family and young child experiences.
- **Health & Wellness:** A separate 'Warm Water' or 'Therapeutic' pool to increase exercise, aerobic, senior and healing activities.
- **The Destination:** A feature Water Slide that builds creates an exciting draw to the facility and increases the family fun.

# POOL / AQUATICS ALTERNATIVES + PROGRAMMING



# POOL ALTERNATIVE - FAMILY RETREAT



### LEGEND

- (A) COMBINED RECREATION AND AQUATICS FACILITY
- (B) OUTDOOR SHOWERS
- (C) 4 LAP LANES (10' X 75' PER LANES)
- (D) BEACH ENTRY WITH SPLASH FEATURES
- (E) GENERAL SWIM AREA
- (F) ARTIFICIAL TURF LOUNGE LAWN
- (G) PARTY / PICNIC LAWNS
- (H) SEPARATE SPLASH PAD FEATURE
- (I) SHADE RAMADAS WITH LOUNGE SEATING
- (J) POOL FENCE
- (K) VIEW DECK FOR LAP SWIM
- (L) LOUNGE SEATING / OUTDOOR FURNITURE

Preliminary Rendering



Preliminary Rendering



Preliminary Rendering





Preliminary Rendering



Preliminary Rendering



Preliminary Rendering

# POOL ALTERNATIVE - HEALTH + WELLNESS



Preliminary Rendering

## LEGEND

- (A) COMBINED RECREATION AND AQUATICS FACILITY
- (B) OUTDOOR SHOWERS
- (C) ARTIFICIAL TURF LOUNGE LAWN
- (D) PICNIC LAWN
- (E) 4 LAP LANES (10' X 75' PER LANES)
- (F) VIEW DECK FOR LAP SWIM
- (G) BEACH ENTRY WITH SPLASH FEATURES
- (H) SHADE RAMADAS WITH LOUNGE SEATING
- (I) POOL FENCE
- (J) LOUNGE SEATING / OUTDOOR FURNITURE
- (K) GENERAL SWIM AREA
- (L) WARM WATER 'THERAPEUDIC' POOL



Preliminary Rendering



Preliminary Rendering



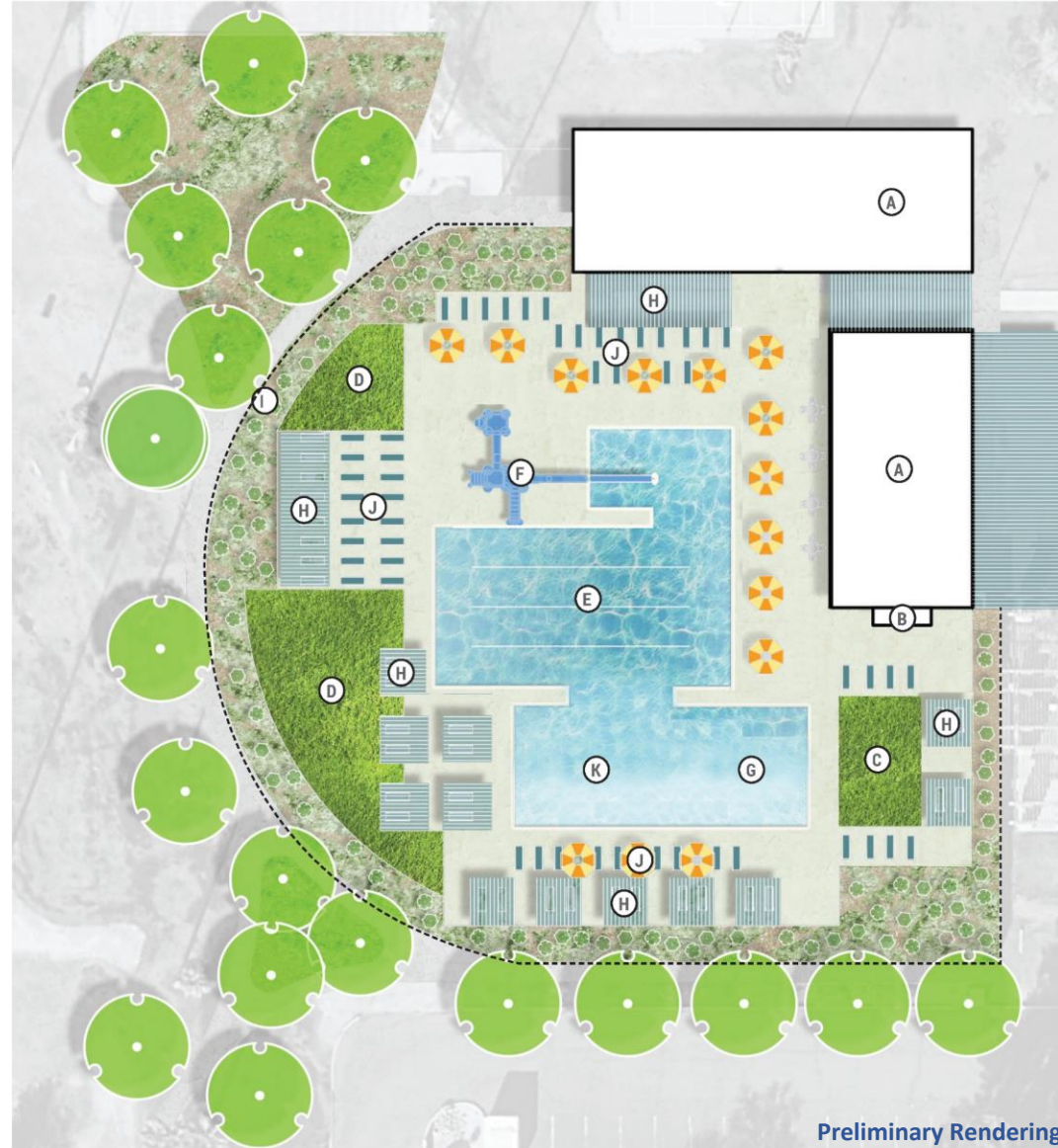
Preliminary Rendering



Preliminary Rendering



# POOL ALTERNATIVE - THE DESTINATION



## LEGEND

- (A) COMBINED RECREATION AND AQUATICS FACILITY
- (B) OUTDOOR SHOWERS
- (C) FAMILY CORNER
- (D) PICNIC LAWN
- (E) 4 LAP LANES (10' X 75' PER LANES)
- (F) WATER SLIDE FEATURE
- (G) BEACH ENTRY WITH SPLASH FEATURES
- (H) SHADE RAMADAS WITH LOUNGE SEATING
- (I) POOL FENCE
- (J) LOUNGE SEATING / OUTDOOR FURNITURE
- (K) GENERAL SWIM AREA



Preliminary Rendering



Preliminary Rendering



Preliminary Rendering



Preliminary Rendering

# PUBLIC SURVEY QUESTIONNAIRE



# CLARK PARK PUBLIC SURVEY: PARK MASTER PLAN PROGRAM

## WITH THE UNDERSTANDING THAT THE ORIGINAL PROJECT CIP FUNDS WERE INTENDED FOR:

- AQUATIC CENTER + POOL HOUSE
- RESTROOM RENOVATION;
- RAMADA RENOVATIONS;
- PLAYGROUND RENOVATION;
- LIGHTING AND LANDSCAPE IMPROVEMENTS;
- AND ADA UPGRADES.

## PLEASE RANK THE FOLLOWING ADDITIONAL MASTER PLAN FEATURES IN ORDER OF IMPORTANCE TO YOU:

- A DEDICATED SPACE FOR THE COMMUNITY GARDEN.
- ADDITIONAL PATHWAYS THAT CONNECT AMENITIES AND FACILITATE STROLLING.
- RELOCATED SPORTS COURTS TO ALLOW A FORMAL COMMUNITY LAWN WHILE ADDING ACTIVITY TO THE EAST SIDE OF THE PARK.
- A GREATER INVESTMENT IN PLAY AND FITNESS AREAS.
- A GREATER INVESTMENT IN RAMADAS AND GATHERING AREAS.

## WHAT DO YOU LIKE ABOUT EACH OPTION?

- THE COMMUNITY HUB
- THE GREAT LAWN

## WHAT DO YOU NOT LIKE ABOUT EACH OPTION?

- THE COMMUNITY HUB
- THE GREAT LAWN

## CLARK PARK PUBLIC SURVEY: AQUATIC CENTER PROGRAM

### ASSUMING A BASELINE AQUATIC PROGRAM OF:

- 4-LANE LAP SWIMMING,
- A GENERAL SWIMMING AREA FOR CLASSES AND AEROBICS
- AND A ZERO DEPTH BEACH ENTRY WITH WATER PLAY.

### WHICH OF THE FOLLOWING ADDITIONAL FEATURES INTERESTS YOU THE MOST?

PLEASE RANK THE FOLLOWING IN ORDER OF INTEREST / IMPORTANCE:

- SEPERATE SPLASH PAD - TODDLER (0-4YR) FOCUSED
- WATER SLIDE
- WARM WATER (THERAPEUTIC) POOL
- ADDITIONAL SHADE
- ADDITIONAL LAP LANES
- ADDITIONAL LAWNS (PICNIC / SUNBATHE)

### THERE IS FELEXIBILITY TO ADAPT VARIOUS PROGRAMS WITHIN THE POOL LAYOUT OPTIONS. WHICH POOL SHAPE AND DECK LAYOUT DO YOU PREFER?

- **ORGANIC FORMS** (FAMILY RETREAT)
- **STRUCTURED FORMS** (HEALTH AND WELLNESS + THE DESTINATION)
- **NO OPINION**



Online comment open through Nov. 19  
[tempe.gov/Forum](https://tempe.gov/Forum)

Additional questions?

Shawn Wagner

[shawn\\_wagner@tempe.gov](mailto:shawn_wagner@tempe.gov)

480-350-5299