

Rio Salado & Beach Park Master Plan Implementation

Historic Preservation Commission

September 9, 2020



Presentation Overview



- Background
- Review of Concepts
- Questions



Master Plan: Review



- Purpose
- Guiding Principles
- Activity Zones
- Implementation Strategies



Rio Salado Park Masterplan Vision



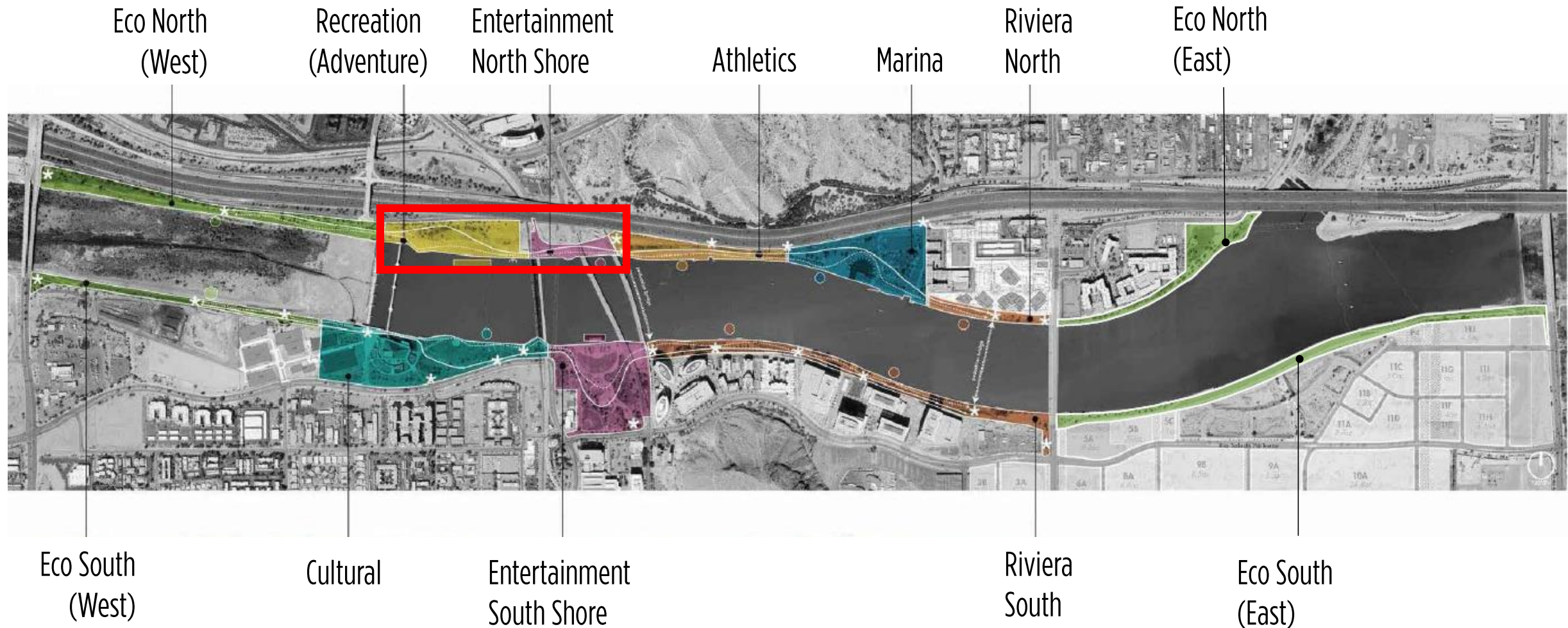
prepared by:
Holly Street Studio and Floor Associates
for:
City of Tempe, Arizona

Fall 2018

Implementing Improvements: Methodology



Activity zones were scored & prioritized by gauging improvement impacts & improvement potential.



Implementation Improvements: Funding



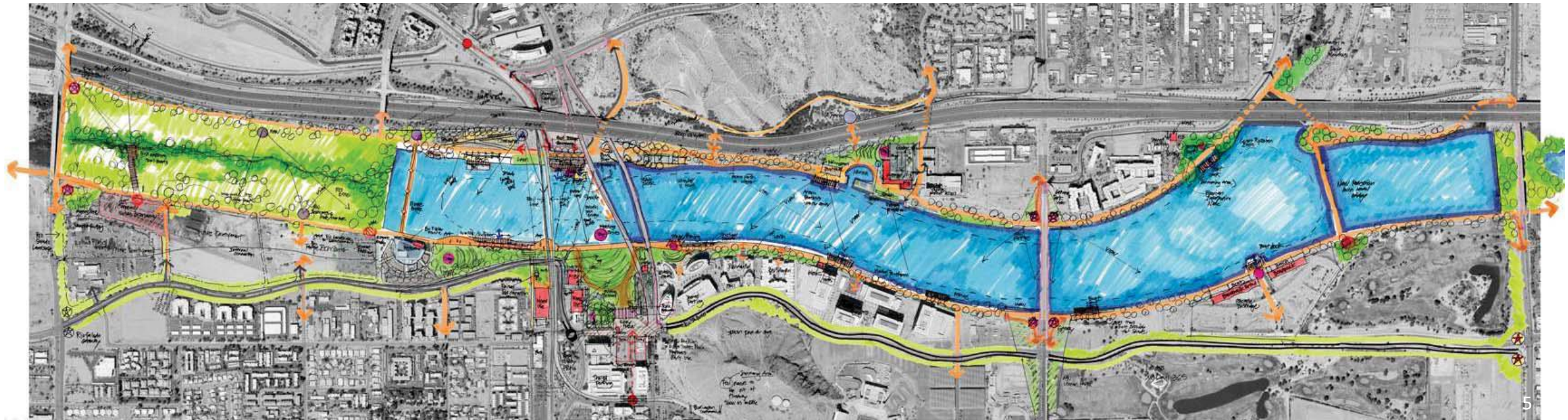
Public

- Capital Improvement Program
- Grants
- Land Sale

Private

- Private Development
- Public Private Partnerships
- Naming Rights
- Sponsorships

RFI



Request for Information (RFI)



- RFI – Overview and Purpose
- Responses
- Other Waterfront Projects/Ideas



Review of Concepts



CATEGORY LAND (L)

- L1 – Observation Tower
- L2 – Rockwall
- L3 – Fitness Court
- L4 – Skate Rink
- L5 – Bike Ramps
- L6 – Playground
- L7 – Swings
- L8 – Carousel
- L9 – Themed Gardens
- L10 – Museum
- L11 – Birding and Nature

CATEGORY AERIAL (A)

- A1 – Zipline
- A2 – Adventure/Challenge Course
- A3 – Sky Ride
- A4 – Bungee Jumping

CATEGORY WATER (W)

- W1 – Obstacle course
- W2 – Slide
- W3 – Cable wakeboard/Flowboard/Surf Pool
- W4 – Brew boat/ Cycle boat/ Tour boat
- W5 – Lazy River
- W6 – Floating Movies
- W7 – Fountain/ Splash Play

CATEGORY SUPPORT (S)

- S1 – Food
- S2 – Transport
- S3 – Restrooms
- S4 – Parking

LAND (L)

L1 – Observation Tower

L2 - Rockwall

Observation towers provide unobstructed views of the surrounding areas. Climbing walls allow multiple people of varying skill levels to simulate rock climbing. The structures can be combined to reduce the footprint.





LAND (L)

L3 – Fitness Court

L4 – Skate Rink

L5 – Bike Ramps

L6 - Playground

Active land-based amenities can include things such as adult fitness courts, bike ramps, ice rinks that doubles as a walking path, and children's play equipment.



LAND (L)

L7 – Swings

L8 – Carousel

L9 – Themed Gardens

Land-based activities can also be more passive in nature such as swings, carousels and themed gardens.



LAND (L)

L10 – Museum

L11 – Birding and Nature

Educational opportunities can take the form of museums and nature walks, self-guided or instructor-led.



Do you see a hawk-like bird fly overhead?
Two "raptors" harvest fish from Tempe Town Lake.



Bald Eagle



Osprey

AERIAL (A) A1 - Zipline

Ziplines can take riders across the lake at speeds up to 25 miles per hour.



AERIAL (A)

A2 – Adventure/Challenge Course

A3 – Sky Ride

A4 – Bungee Jumping

Other Aerial adventures take you above the city in sky rides or challenge courses. Bungee jumping and free-fall experiences let the user defy gravity.





WATER (W)

W1 – Obstacle Course

W2 - Slide

Large inflatables installed on the water provide obstacle and challenge courses. Outdoor slides can be installed on water or land, with water landing or foam pit landing.



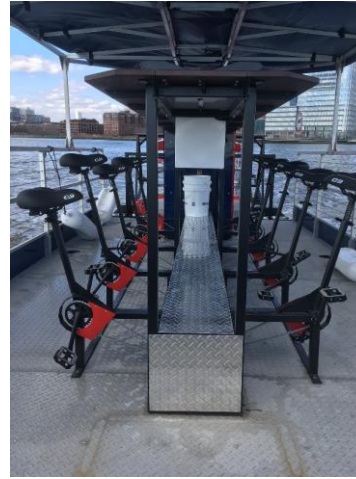


WATER (W)

W3 – Cable wakeboard/Flowboard/Surf Pool

Flowboarding, surf pools and cable wakeboarding provide surfing and wakeboarding experiences with artificial waves to simulate ocean surfing.
No boat is required





WATER (W)

W4 – Brew boat/Cycle boat/Tour boat

Tour boats, cycle boats, and brew boats can all offer cruises and tours around the lake and can be chartered for private events and parties. The difference with a cycle boat is that passengers power the boats at pedal stations.





WATER (W)

W5 – Lazy River

W6 – Floating Movies

W7 – Fountain/Splash Play

Other water-based activities are fountains and splash areas, lazy river floats and movie watching.





SUPPORT
Food
Parking
Restrooms
Transport

Support amenities provide important contributions to the overall experience.



Next Steps



- Survey open September 2 – October 1: tempe.gov/forum
- City Council Presentation November 5
- Request for Proposal to design, build, operate
- Request for Proposal to complete conceptual design



Questions?