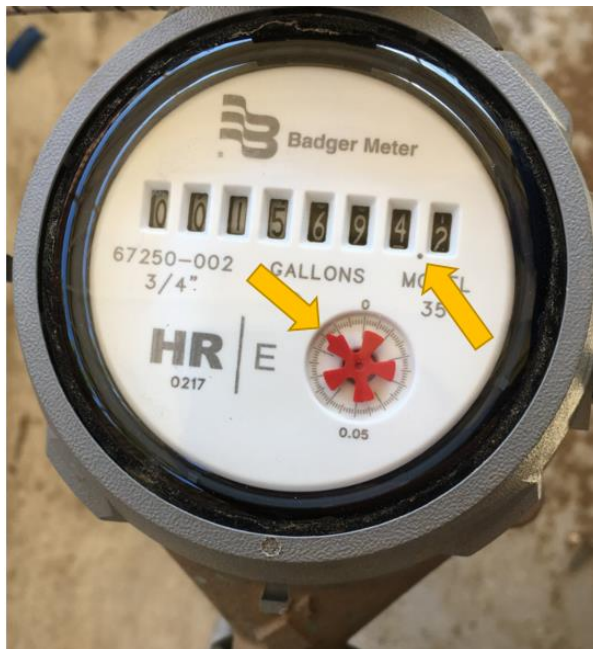


Meter box:



Your meter box should be somewhere in the front of your home, near the street. It will have either a metal lid, or a black plastic lid.

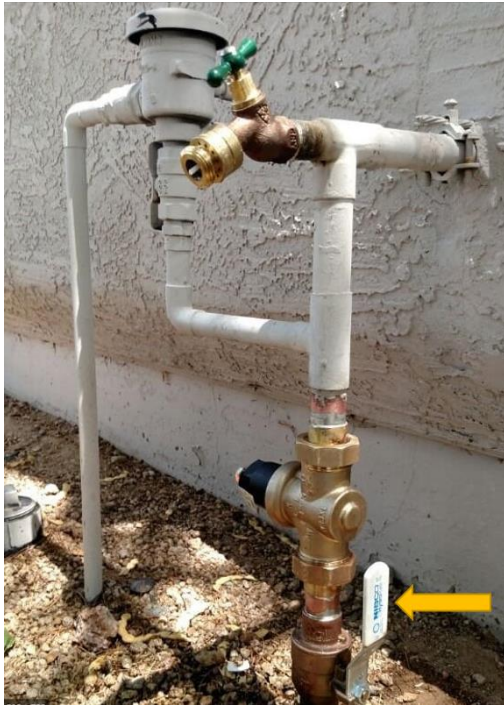
Meter face



Please note that there is a decimal point to the left of the last number on the meter face.

Also note that on the small red dial, one of the pegs on the dial has a small arrow on it.

Home shut off



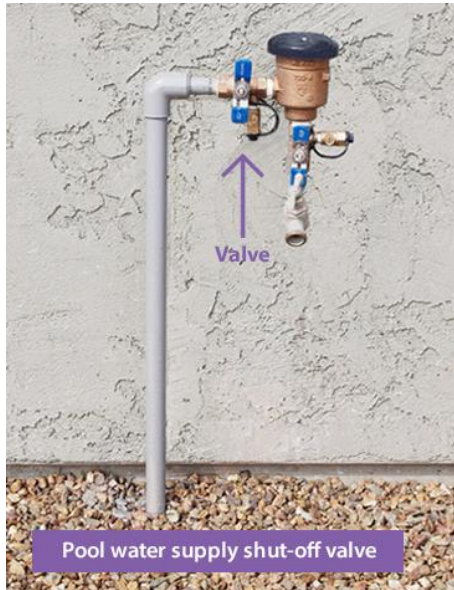
The home shut off should be somewhere near the front, outside of your home. In line directly with your meter.

Back flow preventer



This is what a general back flow preventer looks like. This one specifically is a pressure vacuum breaker which has two ball valves: one right before and right after the breaker. These count as your irrigation shut off valves.

Pool shut off



This shut off is typically in the back yard, somewhere off of the house.

Irrigation valves



Under ground irrigation valves, in green irrigation boxes



Above ground irrigation valves