

Grand Canal Multi-use Path Phase II Draft PA Update

**Public Meeting Round II
September 14th and 16th, 2019**

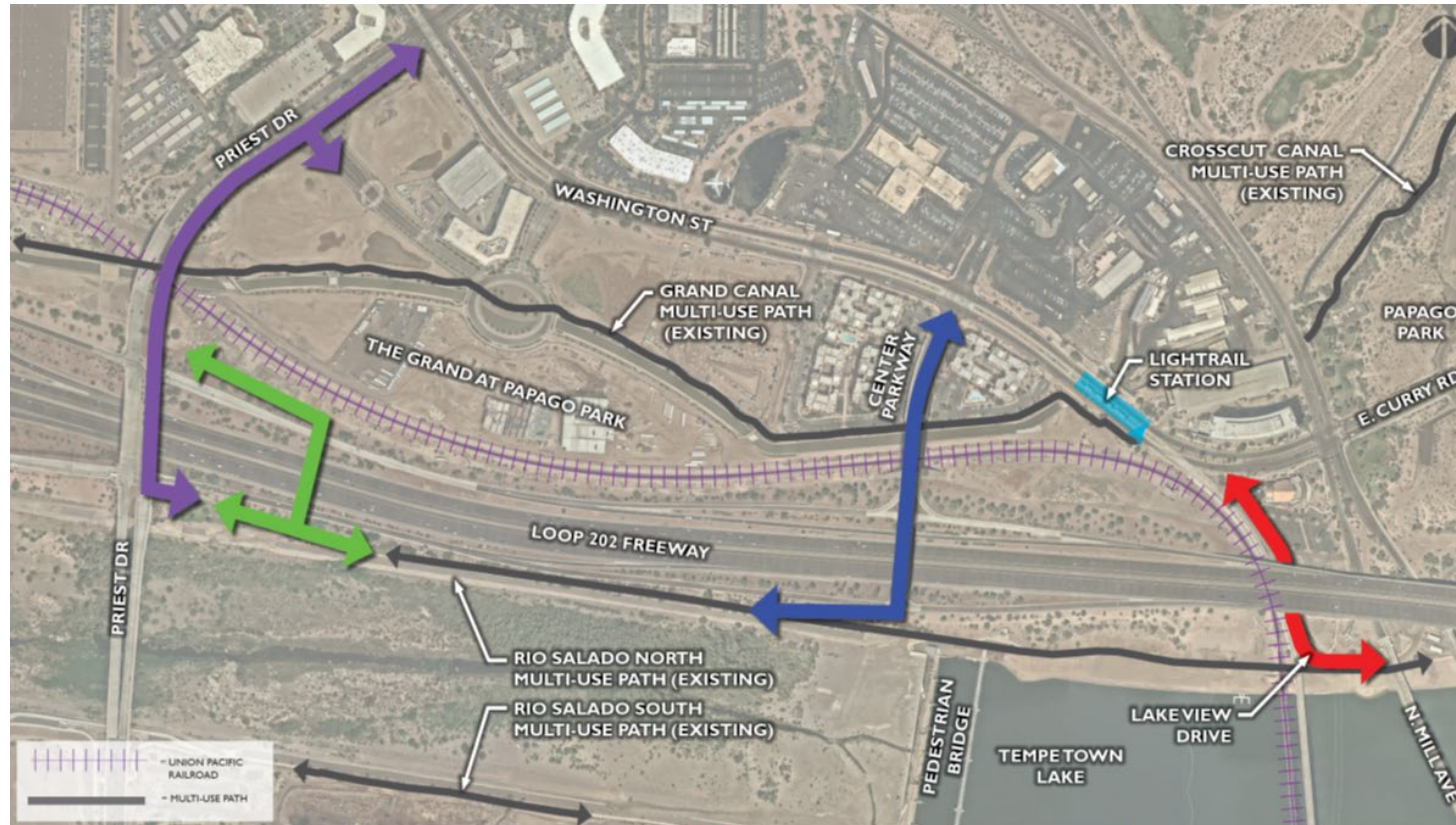


Overview



- **Grand Canal Phase II**
(Preliminary Design)

- Connects the Grand Canal Multi-Use Path to the Rio Salado North Bank Multi-Use Path.



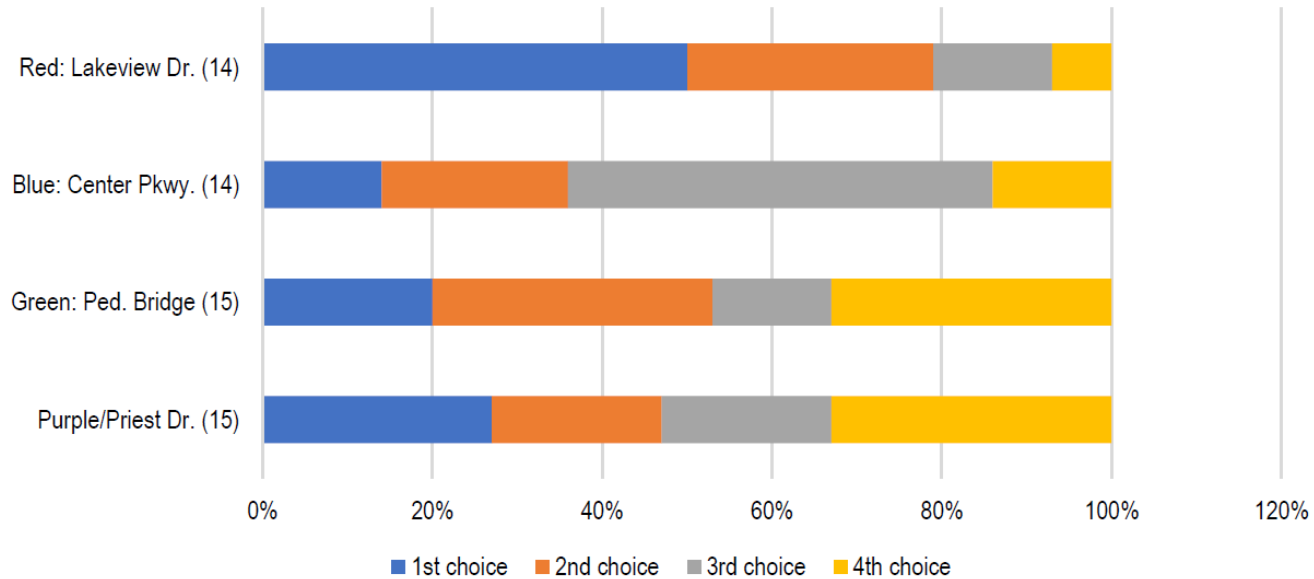
PURPLE ALTERNATIVE: PRIEST DRIVE

BLUE ALTERNATIVE: CENTER PARKWAY

GREEN ALTERNATIVE: PEDESTRIAN BRIDGE

RED ALTERNATIVE: LAKE VIEW DRIVE

Feedback on Conceptual Alternatives



Average Priorities for the 16 responses:

1. Red: Lakeview Drive
2. Purple: Priest Drive
3. Green: Pedestrian Bridge
4. Blue: Center Parkway

Preferred Alternative



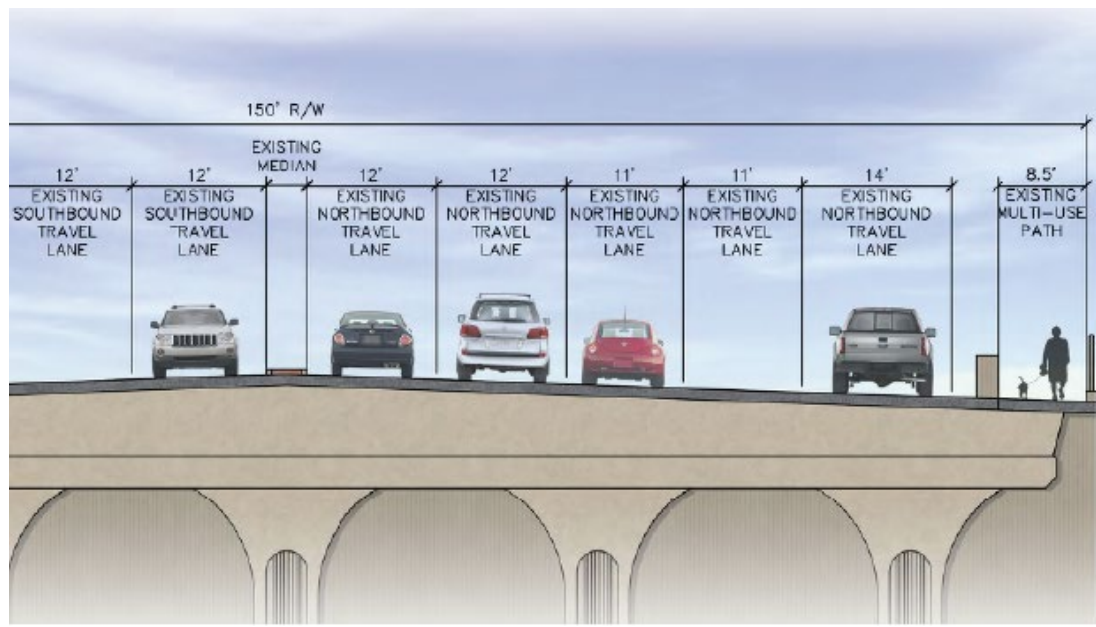
Priest Drive Improvements



- Widening the east sidewalk from 8-ft to 10-ft
- High visibility striping and signage at all pedestrian crossing locations
- Relocating existing pedestrian concrete barrier and lighting
- Upgrade pedestrian ramps to be ADA compliant
- Connects directly to Rio Salado North Bank Path with bike lanes at Washington St and Grand Development: directly connecting to the Grand Canal Path.



Priest Drive Improvements



Priest Drive Improvements



Priest Drive Improvements





Priest Drive 15% Plans

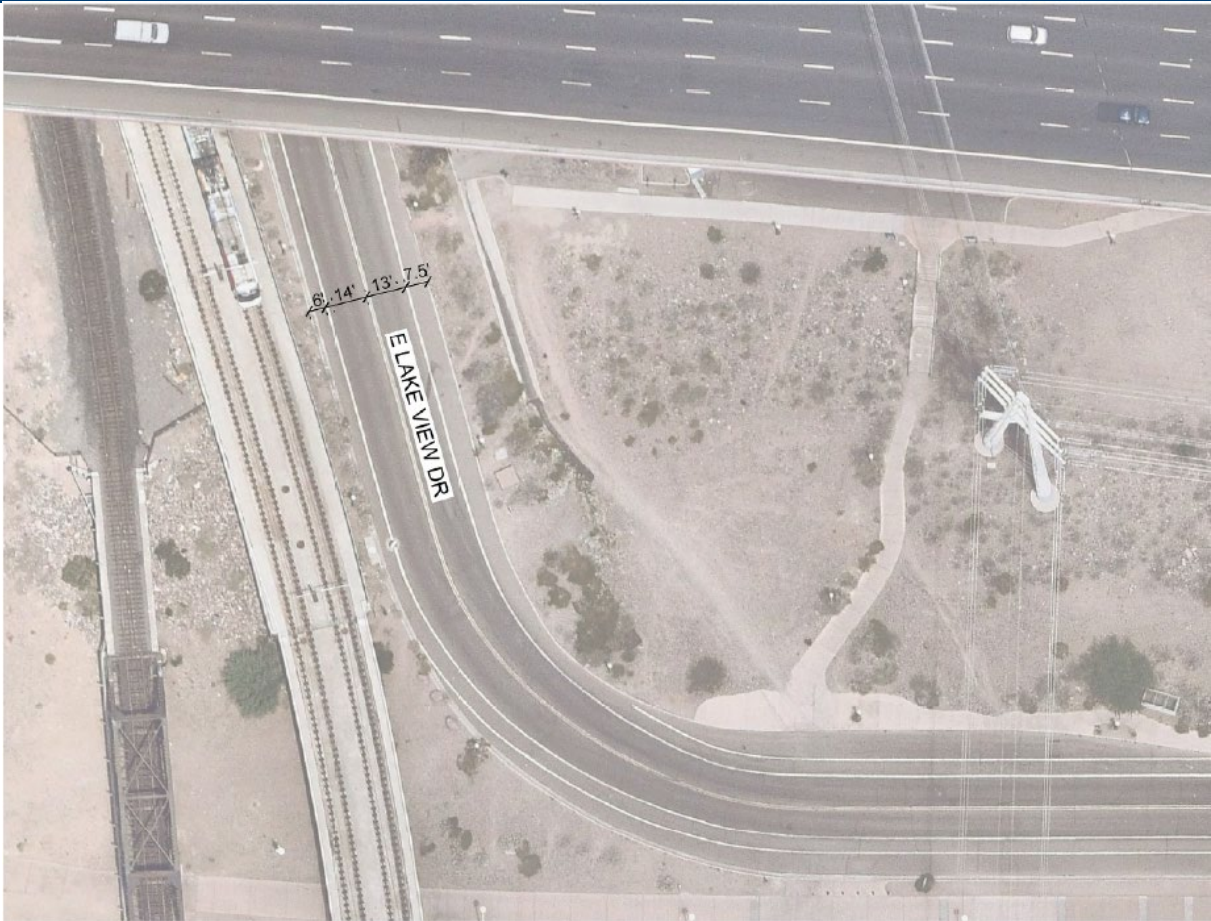
Lake View Drive Improvements



- Providing ADA-Compliant access from Mill/Curry Sidewalk to Rio Salado North Bank Path
- High visibility striping and signage at all pedestrian crossing locations
- Re-striping to provide buffered bike lanes on each side of the roadway
- Upgrade pedestrian ramps to ADA compliance
- Direct access to Washington Street Grand Canal Path entrance from Rio Salado North Bank Path



Lake View Drive Improvements



Lake View Drive Improvements



Lake View Drive Improvements





Priest Drive 15% Plans



The background features a central light blue circle surrounded by concentric rings of dark blue and yellow, creating a tunnel-like effect.

Next Steps

Next Steps



- Public meetings to be held to present design concepts developed from all input received to date:
 - Saturday, September 14th at Field Services Assembly Hall 9:00 A.M.
 - Monday, September 16th at Field Services Assembly Hall 5:30 P.M.
- Incorporate all feedback into a refined design concept, and finalize project assessment report.
- Submit final project assessment report and 15% preliminary design plans to MAG