

# **Grand Canal Phase I & II Projects**

**Public Meeting  
May 8<sup>th</sup> & 11<sup>th</sup>, 2019**



# Overview

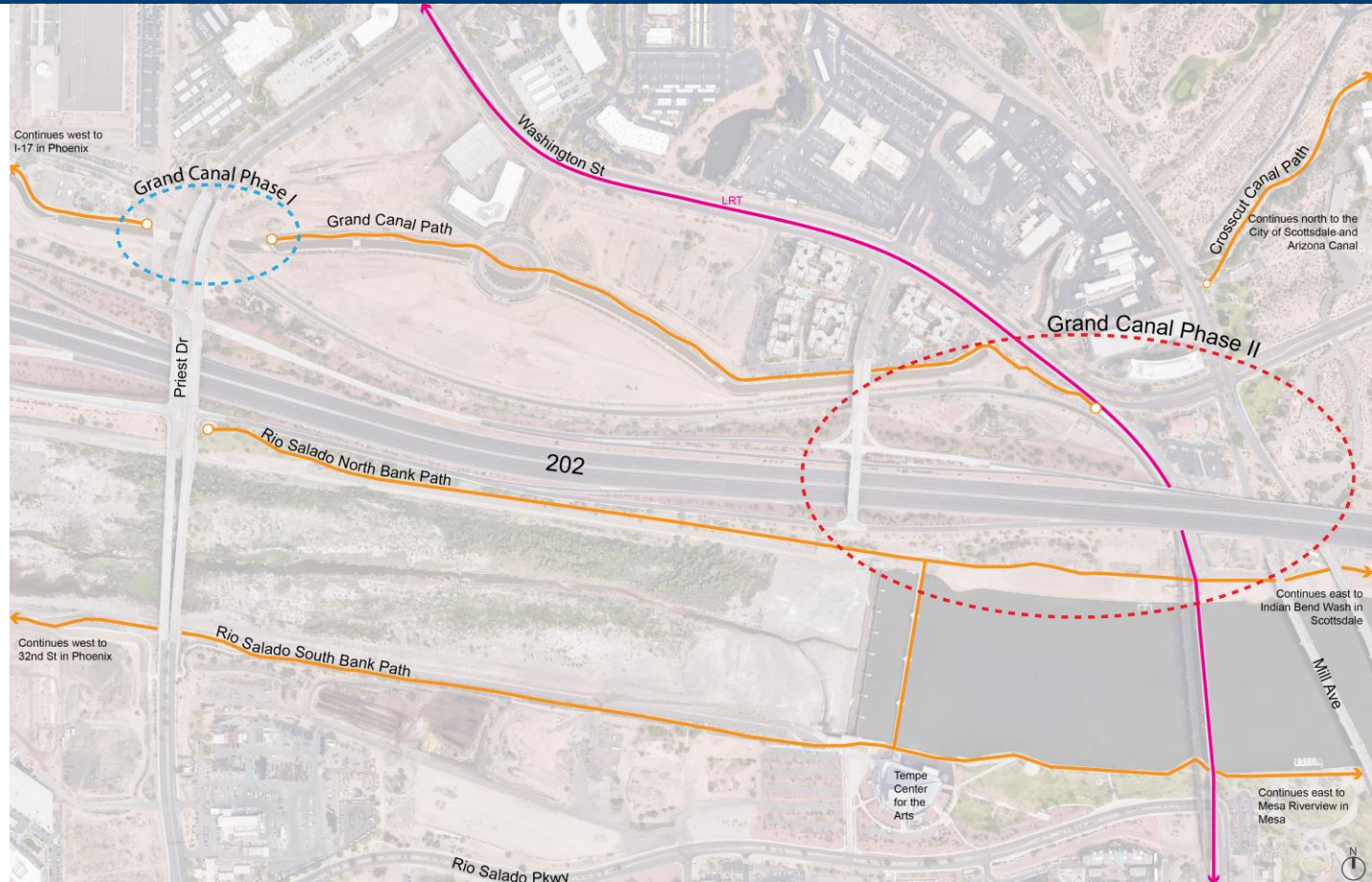


- **Grand Canal Phase I**  
(Design and Construction)

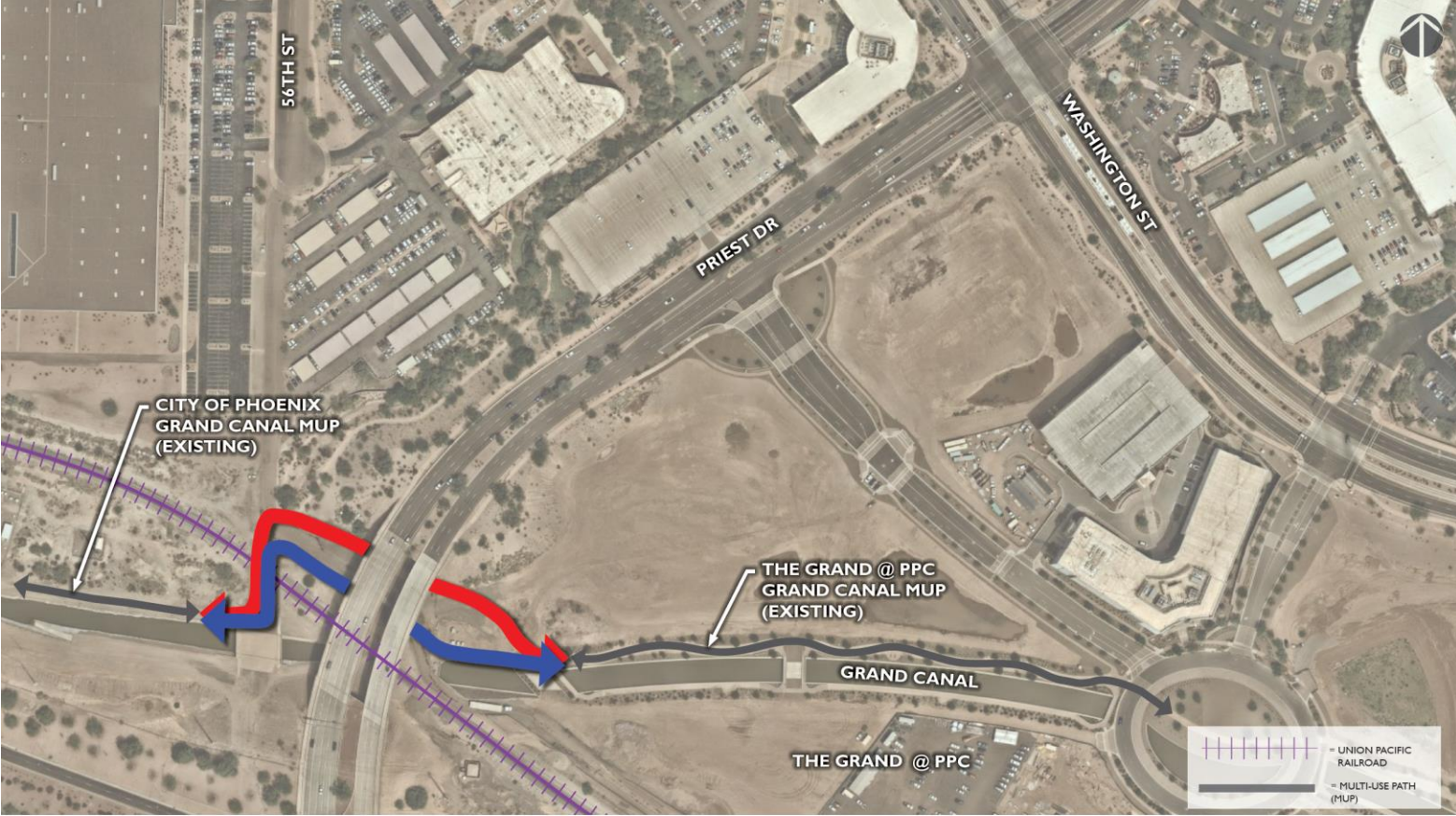
- Completes the 800' gap in multi-use path between the City of Phoenix and City of Tempe, along the Grand Canal.

- **Grand Canal Phase II**  
(Preliminary Design)

- Connects the Grand Canal Multi-Use Path to the Rio Salado North Bank Multi-Use Path.



# Grand Canal Phase I



BLUE ALTERNATIVE

RED ALTERNATIVE

# Grand Canal Phase I – Existing Conditions



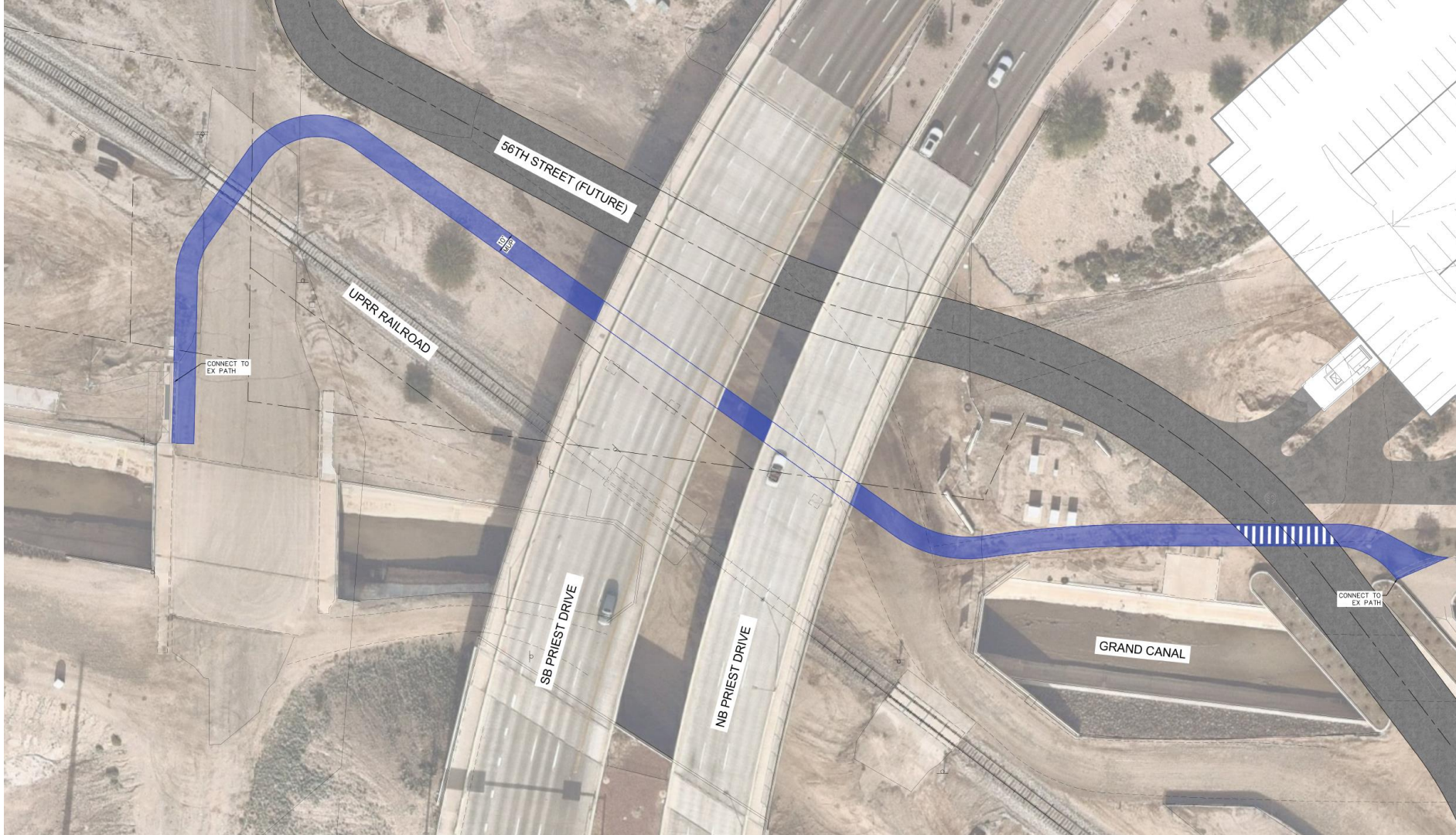
● City of Phoenix Connection



● Looking East towards Priest Drive



● Existing Grand Canal Path in Tempe



56TH STREET (FUTURE)

UPRR RAILROAD

SB PRIEST DRIVE

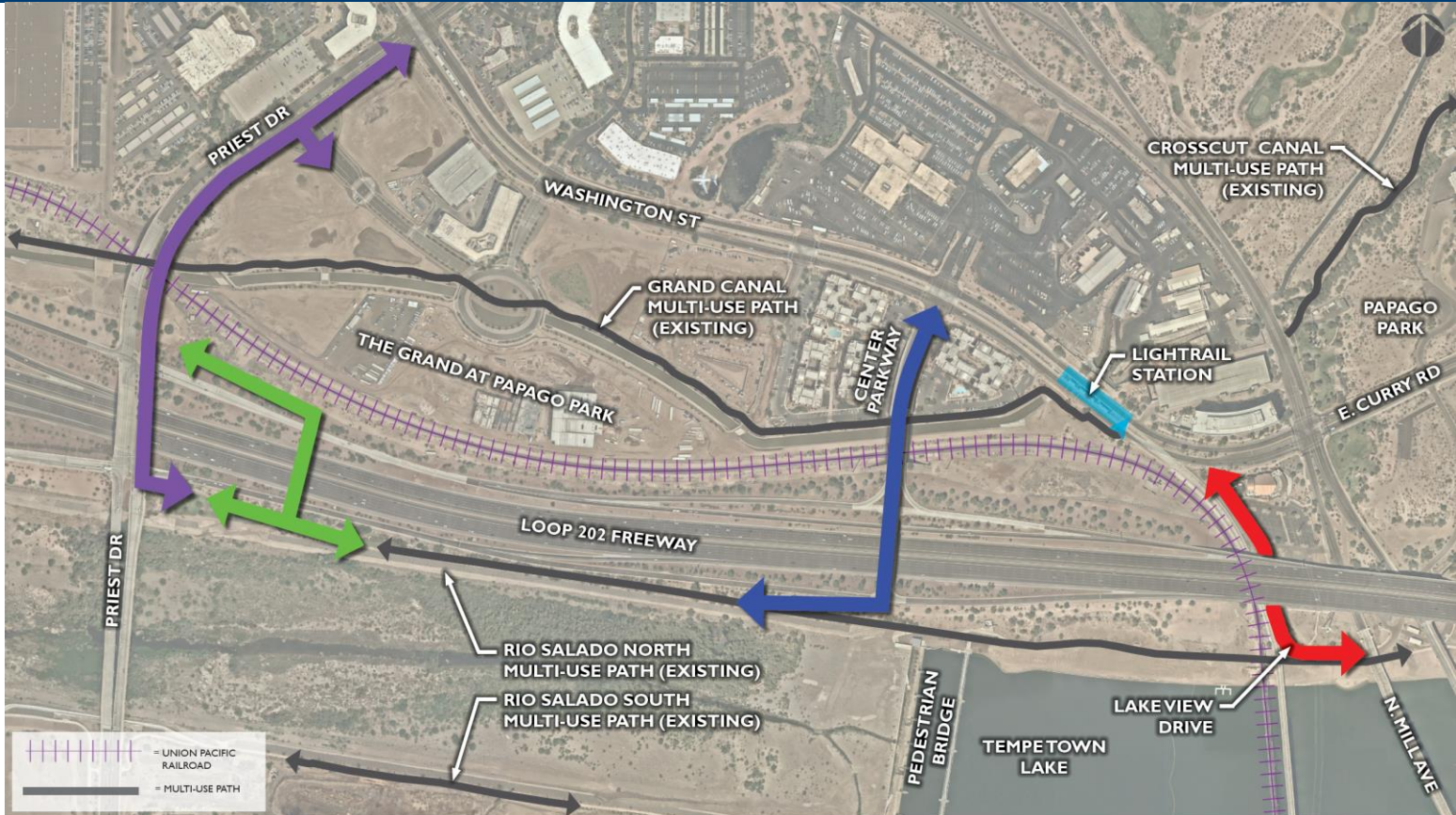
NB PRIEST DRIVE

GRAND CANAL

CONNECT TO EX PATH

CONNECT TO EX PATH

# Grand Canal Phase II



PURPLE ALTERNATIVE: PRIEST DRIVE

BLUE ALTERNATIVE: CENTER PARKWAY

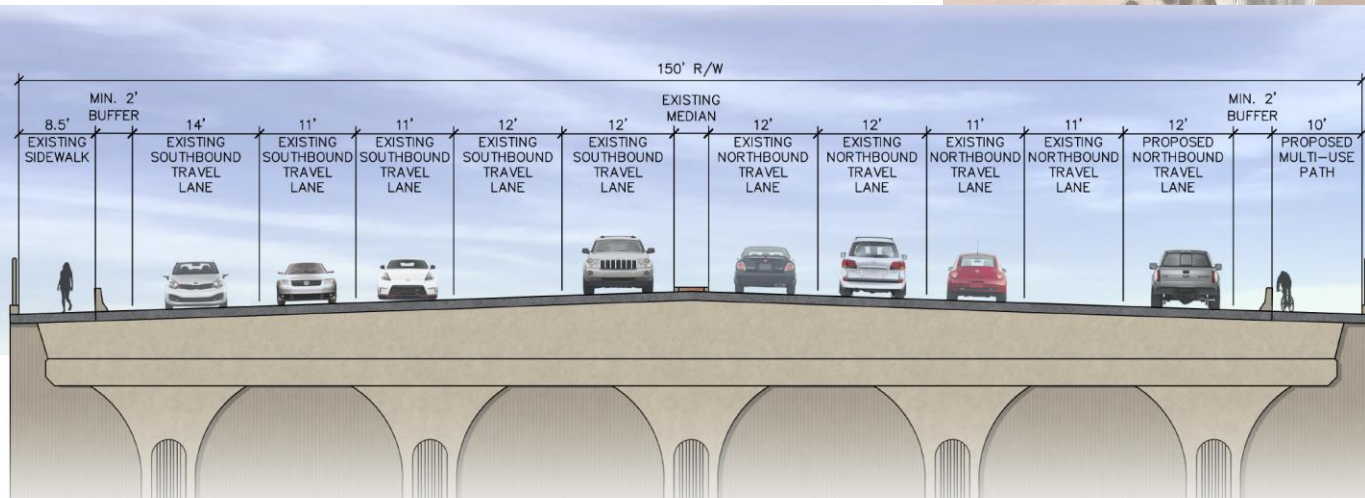
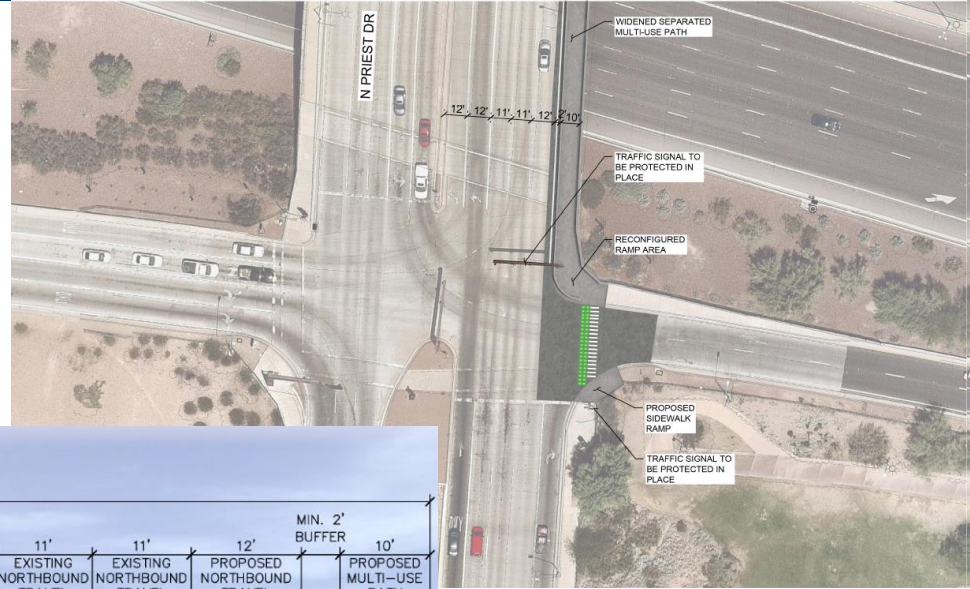
GREEN ALTERNATIVE: PEDESTRIAN BRIDGE

RED ALTERNATIVE: LAKE VIEW DRIVE

# Grand Canal Phase II – Purple Alt. Priest Drive



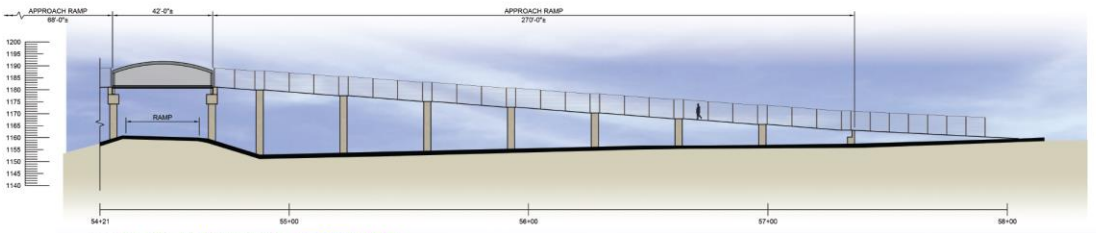
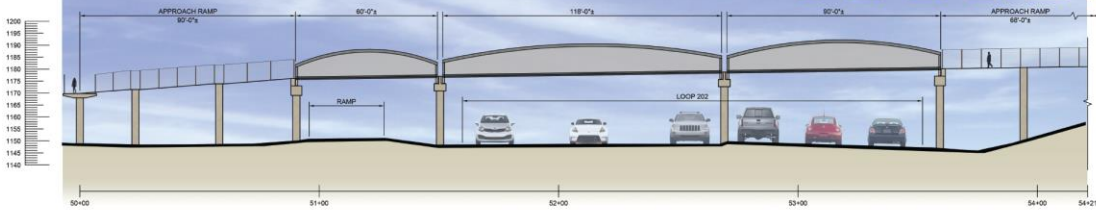
- Widen existing sidewalk to 10'
- Narrow inner travel lanes
- Add high visibility crosswalks



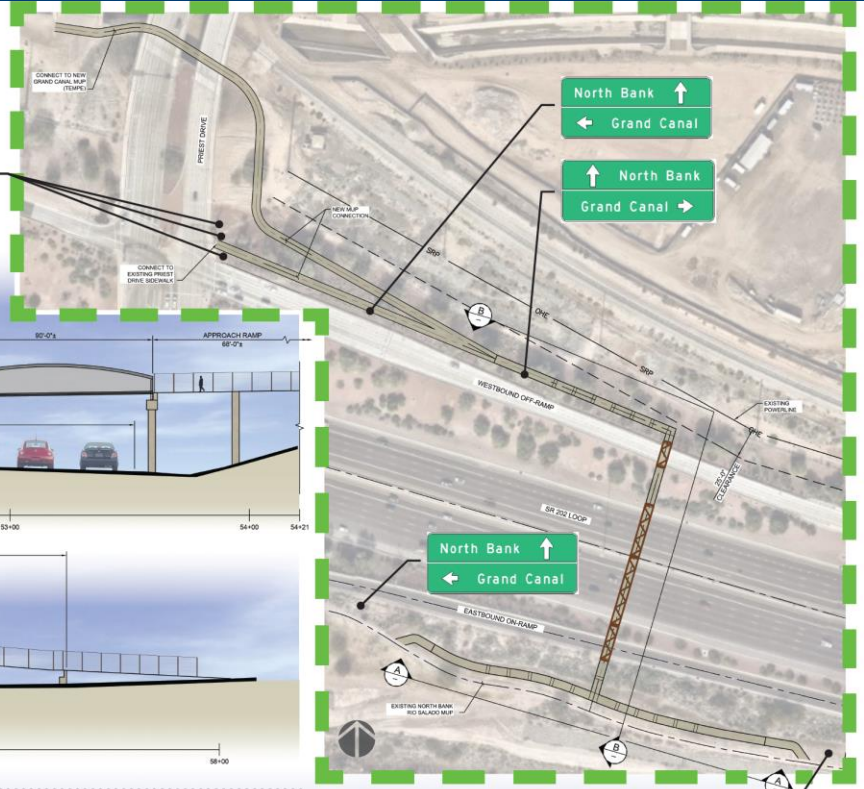
# Grand Canal Phase II – Green Alt. Pedestrian Bridge



Construct new pre-fab ped bridge over SR 202L



4 PEDESTRIAN BRIDGE - SECTION B-B



North Bank ↑  
← Grand Canal

↑ North Bank  
Grand Canal →

North Bank ↑  
← Grand Canal

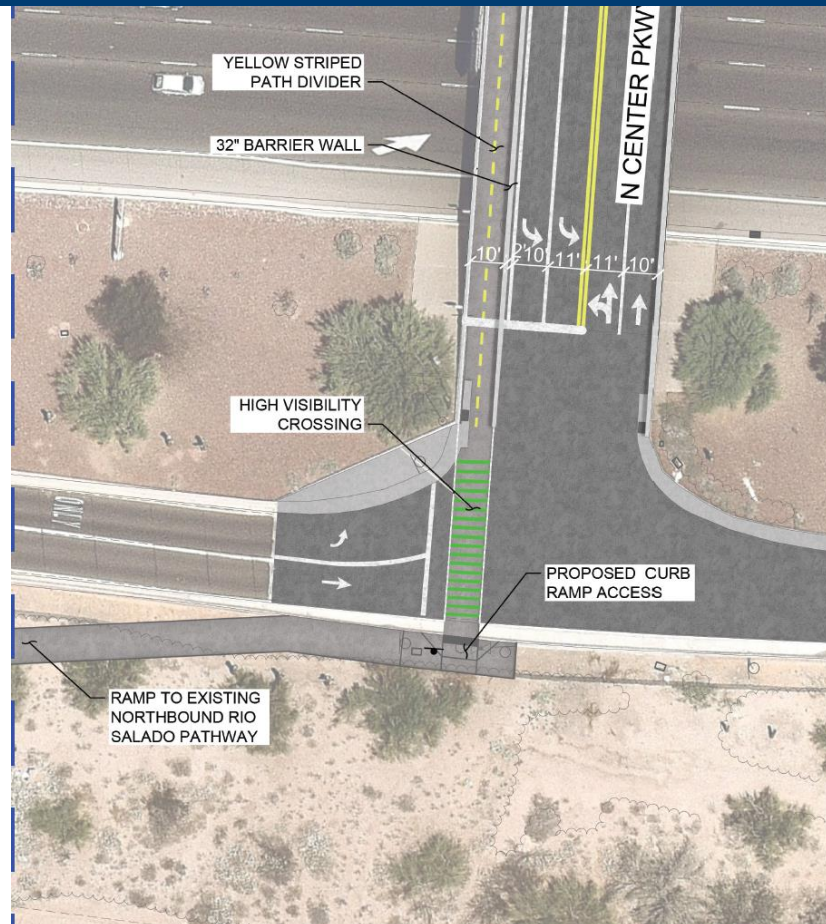
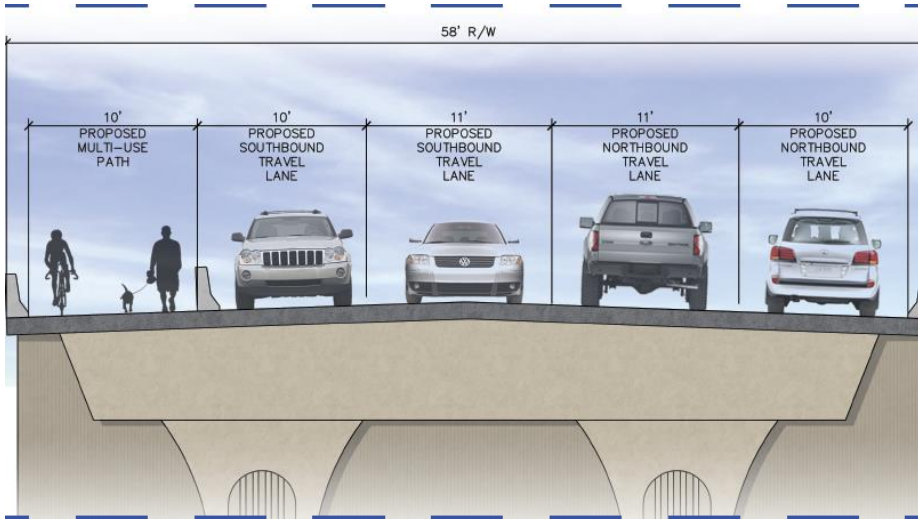
↑ North Bank  
Grand Canal →



# Grand Canal Phase II – Blue Alt. Center Pkwy



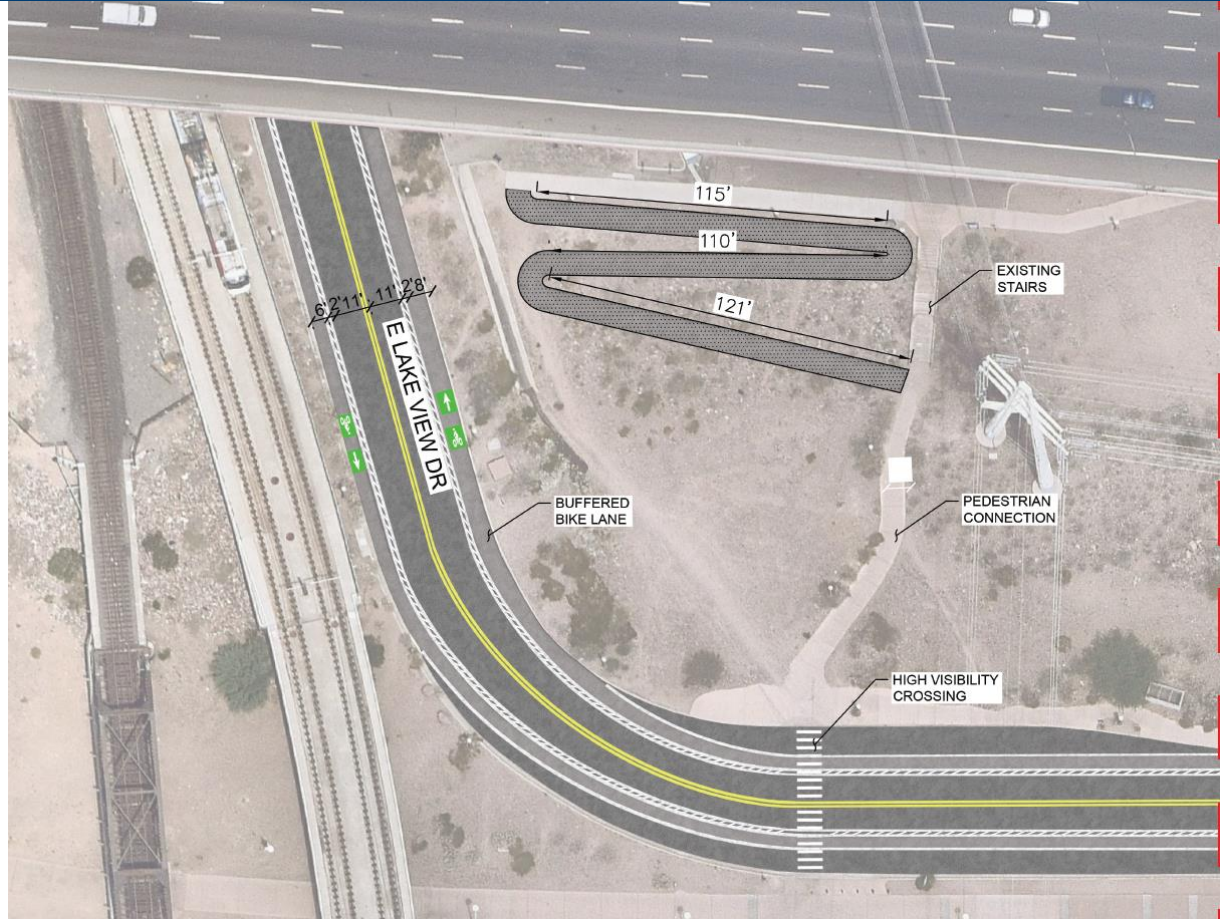
- Remove one travel lane
- Ramp to Rio Salado North Bank Path
- Narrow remaining travel lanes
- Add protected 10' Multi-Use Path
- Add high visibility crosswalks



# Grand Canal Phase II – Red Alt. Lake View Drive



- Restripe existing travel lanes to include 2' buffered bike lanes
- Construct new ADA accessible route for ped. connections



The background features a central light blue circle surrounded by multiple concentric rings of varying thicknesses in dark blue and yellow, creating a tunnel-like or ripple effect.

# Next Steps

# Next Steps



- Public meetings: **May 8<sup>th</sup> and 11<sup>th</sup>**
- Transportation Commission: **May 14<sup>th</sup>**
- Draft PA Report and Preferred Alternatives Review: **June 2019**
- Transportation Commission: **August 13<sup>th</sup>**
- Sustainability Commission: **September 2019**
- Public Meetings: **August 24<sup>th</sup> and 28<sup>th</sup>**
- Final Design Completion (Phase I) – Final PA Report (Phase II): **Oct/Nov 2019**
- Construction Phase I: Est. to begin **Summer 2020**
- Construction Phase II: **TBD, Construction funding not yet identified**



