



JULIE ANN WRIGLEY
GLOBAL INSTITUTE *of* SUSTAINABILITY

SUSTAINABILITY SERIES

5th Street

Streetscape & Traffic Calming Project

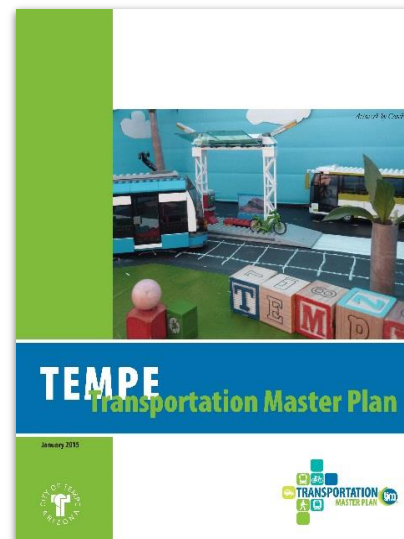
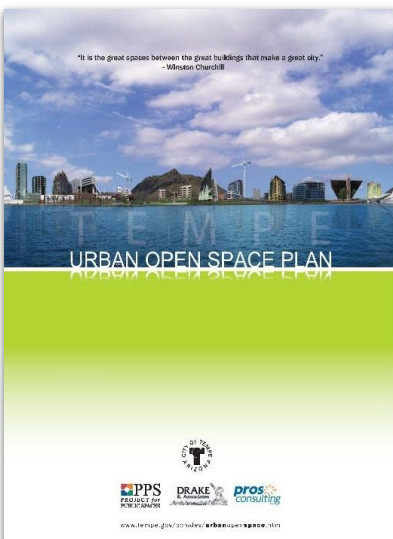
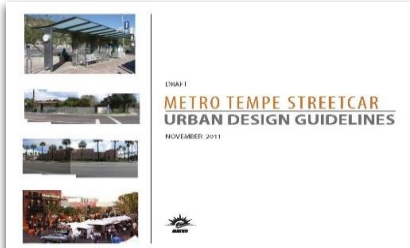
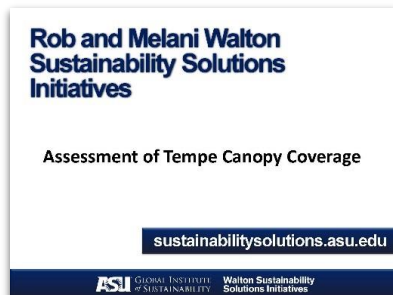
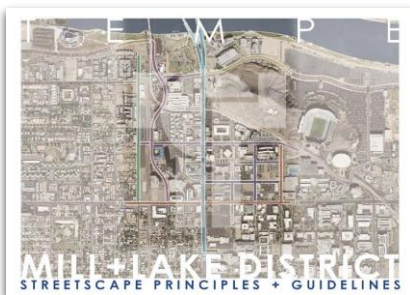


Project Limits & Context



- Approximately 2,900 ft
- Connects City Hall, Mill Ave, ASU, Sun Devil Stadium, police admin and courts, Transportation Center, lightrail, transit services, mixed-use development, multi-family housing, Hayden Butte/A Mountain, historic and redeveloping neighborhoods

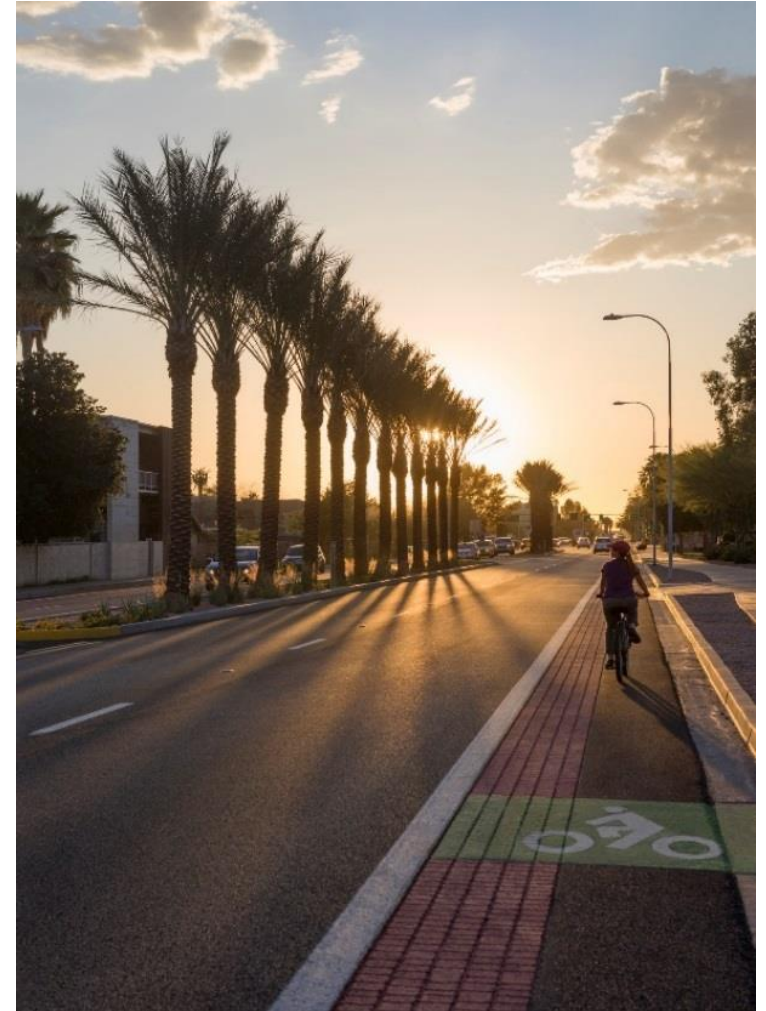
Project History & Guiding Documents



- **2014**
 - Downtown Parking Study
- **2015**
 - Identified in Tempe Transportation Plan 2020 Improvements
 - City Council supported design project for 5th St, Farmer to College
 - Design funded through Downtown Parking Fund
- **2016**
 - collectiV design team hired through RFQ process
 - Begin public involvement, data collection

Design Goals

- Enhance **multi-modalism** (improve bike, ped, transit & ADA)
- Utilize **innovative transportation design** (NACTO)
- Maintain vehicular & **special event** access & integrate **traffic calming**
- Expand & improve **landscape & shade** options, particularly tree coverage
- Address **heat island & user comfort**, utilize **Low Impact Development** techniques (water harvesting, solar)
- Preserve **utility operations** and allow for future growth
- Balance **design with cost control & long term maintenance**
- Connect to **neighborhoods**, protect & create **gateways/transitions**
- Create innovative, sustainable, iconic street with **mobility for all**



Stakeholders

- Key Stakeholders
 - Residents, business and property owners adjacent to 5th Street
 - ASU
 - Downtown Tempe Authority
 - Neighborhood/Homeowner Associations
 - Tempe Bicycle Action Group
 - Valley Metro
- City of Tempe Leaders & Commissions
 - Mayor and Council
 - City Departments
 - Transportation Commission
 - Commission on Disability Concerns
 - Historic Preservation Commission
 - Municipal Arts Commission
 - Parks and Recreation Board
 - Sustainability Commission

Design Possibilities

Parking

On-street Angle & Reverse-angle,
Parallel, Motorcycle/Scooter



Design Possibilities

Parklets

Expansion of sidewalk space to activate street for public use, including bike parking, gathering, retail and greenspace



Parklet examples along Mill Ave

Design Possibilities

Flexible Street for Special Events

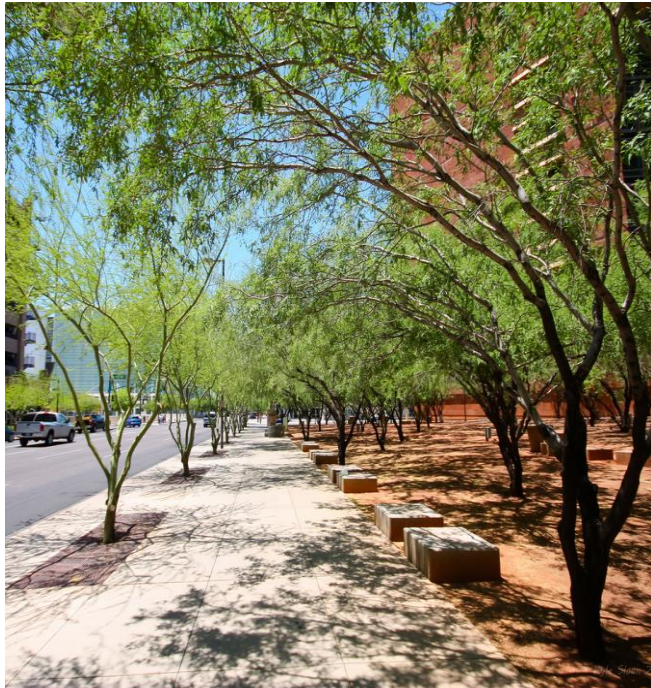
Safe and functional street that allow opportunities to gather in public space



Design Possibilities

Street Trees & Landscaping

Provide shade, irrigation, stormwater collection and water harvesting, as well as aesthetic sense of place and character



Shade canopies

Design Possibilities

Street Trees & Landscaping

Provide shade, irrigation, stormwater collection and water harvesting, as well as aesthetic sense of place and character



Tree trenches, chicanes, landscaped medians

Design Possibilities

Bike Infrastructure

Safe, accessible streets to accommodate and encourage bike activity



Protected bike lanes, cycle tracks, bike share stations

Design Possibilities

Bike Infrastructure

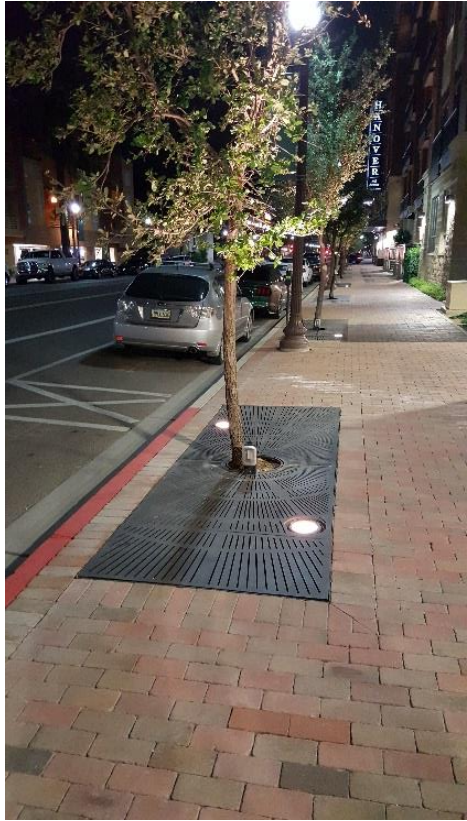
Safe, accessible streets to accommodate and encourage bike activity



Buffered bike lanes, painted lanes, intersection boxes

Design Possibilities

Paving Treatments and Materials



Design Possibilities

Public Art



Challenges & Considerations



Funding
Accessibility
Historic Preservation
Safety
Durability & Maintenance
Surrounding Context
Utilities
Emergency & Service Vehicles
Technology
Special Events

What else?

Exercise

Planning Charrette



Work with your teams to illustrate design concepts

Document benefits of the concept as well as potential challenges

Consider prioritizing which elements are most important to implement

Next Steps

- **Fall 2016**
 - Develop Concept Alternatives
- **Winter / Spring 2017**
 - Public Meeting #2 - Review Concept Alternatives
 - Boards & Commissions
 - City Council Direction
- **Summer / Fall 2017**
 - Prepare final Construction Documents
- Develop phases, temporary & permanent solutions



Questions / Contact

www.tempe.gov/5thStreet



Project Manager : Eric Iwersen | 480-350-8810 | eric_iwersen@tempe.gov
Transportation Planner: Tony Belleau | 480-858-2071 | tony_belleau@tempe.gov