

SCUDDER PARK IMPROVEMENT PROJECT



Welcome

- Staff Introductions
- Background
- Overview of Design Concepts
- Next Steps
- Questions

Background

- Scudder Park area residents participated in a master plan process in 2007
 - Change in economy
- Asset Management approach adopted
- Reconfigured and accessible playground
 - Maintain retention capacity



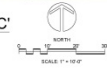
Background

- August 20, 2015 meeting
- Online comments August 20 - 31
- What we heard
 - Separated play structures
 - Shade
 - Swings

Option 1

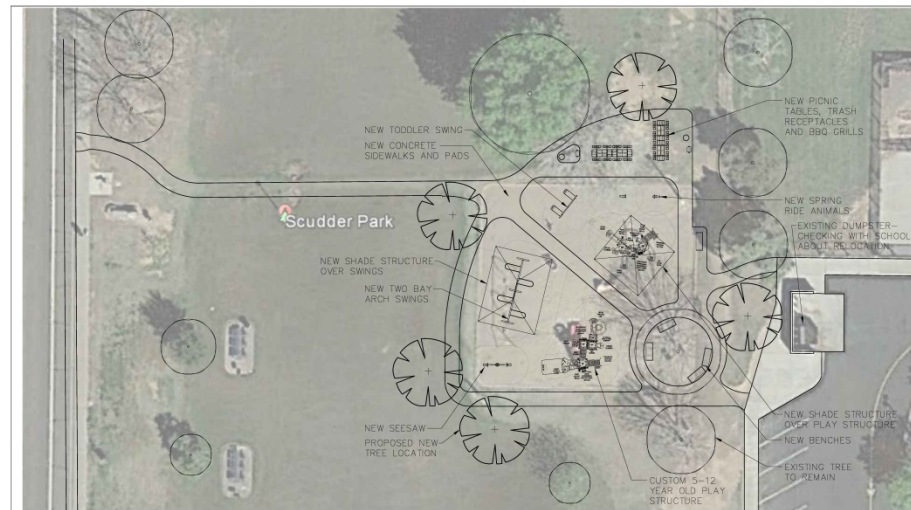


SCUDDER PARK LAYOUT PLAN 'C'
OPTION 1

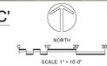


PROJECT INFORMATION	
PROJECT NO.	10000000000000000000
PROJECT NAME	SCUDDER PARK
PROJECT LOCATION	10000000000000000000
DATE	08/03/2010
SCALE	1" = 10' - 0"
SHEET 2 OF 2	

Option 2



SCUDDER PARK LAYOUT PLAN 'C'
OPTION 2



PROJECT INFORMATION	
PROJECT NO.	SCUDDER PARK
DATE	08/01/2018
DESIGNER	[unreadable]
CLIENT	CITY OF FORT WORTH
LOCATION	SCUDDER PARK
PROJECT NO.	[unreadable]

Equipment



PLAY STRUCTURE SPEED CITY 350-1427
TOTAL COST = \$20,600



ARCH SWINGS
SINGLE BAY = \$3,600 - OPTION 1
TWO BAY = \$6,900 - OPTION 2



GAME TABLE
TOTAL COST = \$1,800 EACH



2 SEAT SEESAW
TOTAL COST = \$3,200



TODDLER SWING
TOTAL COST = \$2,400



SPRING RIDER ANIMAL
TOTAL COST = \$950 EACH



PLAY STRUCTURE SLIDE JUNCTION
CHALLENGERS #350-1203
TOTAL COST = \$32,900
OPTION 1



CUSTOM PLAY STRUCTURE
TOTAL COST = \$30,200
OPTION 2

PLAYGROUND EQUIPMENT



SHADE STRUCTURE
30'X40' = \$21,400 EACH
20'X20' = \$10,200 EACH

Color Options

Option 1



Option 2



Option 3



Distinction between plans

- Option 1: includes larger 5-12 year old play structure *with* shade structure and 2 swings *without* shade.
- Option 2: includes smaller 5-12 year old play structure *without* shade and 4 swings *with* a shade structure

Next Steps

- Comment period open through October 2
- October 2015 – Final design/Engineering
- January 2016 – Project bids
- March 2016 - Construction

- Questions?
- Other concerns?

www.tempe.gov/ScudderParkImprovements