

SELLEH PARK IMPROVEMENT PROJECT



Welcome

- Staff Introductions
- Background
- Overview of Design Concepts
- Next Steps
- Questions

Background

- Selleh Park area residents participated in a master plan process in 2009
 - Change in economy
- Asset Management approach adopted
- Reconfigured and accessible playground
 - Maintain retention capacity



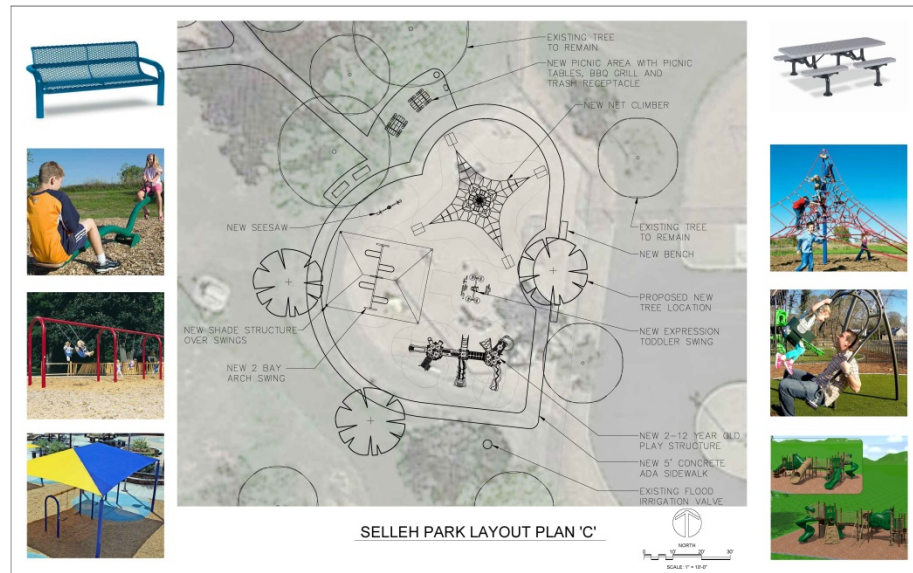
Background

- August 10, 2015 meeting
- Online comments August 10 - 20
- What we heard
 - Play structure
 - Shade

Option 1



Option 2



Color Options

Option 1



Option 2



Option 3



Distinction between plans

- Option 1: includes play structure for ages 5-12 and a drum circle
- Option 2: includes play structure for ages 2-12 without a drum circle

Next Steps

- Comment period open through September 22
- October 2015 – Final design/Engineering
- January 2016 – Project bids
- March 2016 - Construction

- Questions?
- Other concerns?

www.tempe.gov/SellehParkImprovements