



Photo: Alec Scott

CONSTRUCTION BEST PRACTICES TO PREVENT STORMWATER POLLUTION

Follow these best management practices (BMPs) to prevent pollutants from construction activities from entering storm drains:

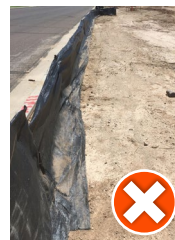
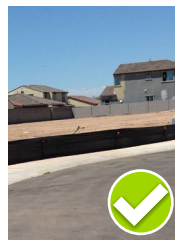


Questions? Call Tempe 311 at 480-350-4311.
tempe.gov/stormwater



Use a silt fence, straw wattles or filter socks to protect the perimeter of the construction site.

Stabilize the construction entrance/exit.



Designate a concrete washout station.

Protect drywells.

Protect storm drains.



Be the solution to stormwater pollution.

Follow these tips to prevent the discharge of pollutants into storm drains:

Q&A

Q. When is a construction site required to obtain authorization under the Arizona Pollutant Discharge Elimination System (AZPDES) Construction General Permit (CGP)?

A. CGP coverage is for stormwater discharges that have potential to enter directly to Arizona surface waters or indirectly through Tempe's Municipal Separate Storm Sewer System (MS4) at sites that will disturb one or more acres, or less than an acre but are part of a larger common plan of development. For more information visit azdeq.gov/AZPDES/CGP.

Q. Why is coverage under the AZPDES CGP necessary?

A. Stormwater runoff associated with construction activities can be a major contributor of pollutants to the City's MS4. If not properly managed, pollutants such as dirt, fuels, oils, trash, concrete washout, joint compound, paint, stucco, etc., could end up in retention basins, parks and waterways.

1. Prepare a Stormwater Pollution Prevention Plan (SWPPP) before starting construction activities. A SWPPP is a site-specific plan that describes how to manage stormwater and reduce or eliminate the discharge of pollutants.
 - For guidance in creating your SWPPP, visit Arizona Department of Environmental Quality's (ADEQ) website at static.azdeq.gov/forms/cgp_p3_template.docx.
2. Apply for a Notice of Intent (NOI) or No Discharge Certificate (NDC) through the ADEQ myDEQ portal at azdeq.gov/mydeq.
3. Once your application is approved, you will receive an authorization number, or AZCON number. You must submit a copy of your NOI or NDC to the City to be issued a building permit before starting construction. Visit tempe.gov/BuildingSafety for more information.
 - At the site's main entrance, post signage with the AZCON number and the following statement in at least 2-inch lettering: "For stormwater complaints, please visit azdeq.gov."
4. Implement and maintain BMPs at the site. BMPs should include erosion and sediment controls, perimeter controls, track-out control devices, storm drain and drywell protection, stabilization of disturbed areas, spill prevention and containment, concrete washout containment and chemical storage.



5. Conduct routine site inspections per the CGP. Complete inspection reports and maintain them in the SWPPP. Tempe will inspect sites with NDCs for discharges to the MS4. If discharges to the MS4 are found, the site will be reported to ADEQ as a non-filer. ADEQ's Stormwater Construction Pre-Inspection Checklist can be accessed at azdeq.gov.
6. Promptly repair or replace any damaged or ineffective BMPs observed during site inspections.
7. Update the SWPPP and site map to reflect modifications to BMPs. A current site map should be kept on site.
8. Complete stabilization of all disturbed areas.
9. Submit a completed Notice of Termination (NOT) to ADEQ once final stabilization has been achieved.
10. Retain all pertinent documents (e.g., SWPPP, inspection reports, revised site map, etc.) associated with the site for at least three years from the date the NOT was submitted to ADEQ.

Only rain down the storm drain.

Tempe strives to protect the health, safety and welfare of our community, by ensuring that our streets, alleys, storm drainage system and other rights-of-way remain clean and safe.

Report illegal discharges to storm drains by calling 480-350-4311, through the Tempe 311 app or online at tempe.gov/stormwater.