

Image #16 (cont.)

Public art is nice. We are a university town after all. I don't think we need to spend a fortune on it though, use local artists.

Public art is inspirational and gives touches of color and form that enhance an area's beauty if not overdone and if in character with the surroundings.

Looks inviting and pleasant to look at. Attractive, better than gray concrete or metal bars.

Too Busy.

Pleasing to the eye.

The best form of art. Let it serve a purpose.

Public Art elevates the character of our community. I support integrating public art wherever possible to enhance our city.

Does not always have to be elaborate.

In areas that have less chance to be vandalized would be good

Yes, to public art integrated with design. Two of the pictures are of same design?

Does "dress up" an area. But again these can be big maintenance issues.

Depending on the style. There's some stuff on the bridge near Ash & Rio Salado which is not family friendly.

I love it, but wonder about vandalism that we have such trouble with

Bridge crossings very attractive on the left pictures. Do not like the script on the sidewalk.

Individualized public art not only brings community identity, it generally leads to overall public safety (broken window theory).

Artful structures add interest and enjoyment in surroundings.

Local artists and student work

Yes, art is great, but safe car free biking and pedestrian zones are most important.

Art defines spaces and brings an area down to scale.

Public art on walkways make people interested in walking and biking rather than driving.

It enhances the visual character of our community.

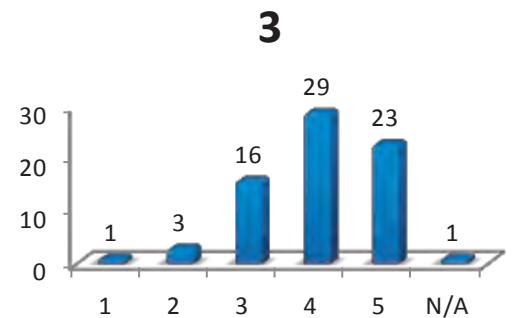
The bridges with art blocking the water ... No! If the metal arts, colorful on the bottom right bridge were among some boring landscape (like Chihuly's are stuck in at the Desert Botanical Garden), but I don't like things blocking views (sky, water, beautiful).

Image #3



Image Rank: 18 out of 63

Average Rating: 3.97 out of 5



Comments

Need more festivals

Where's the shade!

Community Activity good

Need more shade trees, keep parking from neighborhoods

Big category

Golf and more with ASUComments: cultural events often turn out to be cheaply/poorly done

Leave that for ASU area/downtown Tempe

Keep individual costs down, increase local community participation

Great family activity

Local activity draws residents without intimidation

Need to get the word out better about activities

Community activities increase enjoyment of homes.

Highly support community gathering spaces.

Places for these types of functions help develop a community spirit, which is very important.

Using the community parks for community activities will bring the community together.

Outdoor environments for programmed space is an important amenity but shade is needed.

Projects good citizen involvement.

What about something simple like a bandstand for small/local music or drama gigs?

This is fairly general and most cities offer these kinds of venues.

Human interaction and culture are exactly what Tempe needs to promote community involvement and pride. This is the type of thing that cannot and will not be replaced by technology.

Image #3 (cont.)

Cultural events are great to have in town.

Prefer areas with lots of room for seating on chairs, etc. ...even if we bring our own.

More diverse offerings within the community, the better. K Park is a great location, alternate location to Tempe Town Lake, and it has a lake too!! Play that amenity up!

I hate sitting in the grass.

Where is the shade? The Halloween Carnival is at night.

Love activities for families.

Local art exhibit space is another option I would like to see considered. Perhaps incorporated with a library facility.

Love Tempe Beach Park, do not like the fact that there is no shade when bands perform

Four very different concepts. How to decide what is the message? To have a variety, to prefer one of the four over the others?

Nice to have gatherings, but can be trafficy, have crazy crowds, etc.

I especially like the outdoor amphitheater, even though I would normally think we should watch our water use for lawns.

Inviting.

No shade.

Grassy area allows outdoor projects, however, additional shade would be desirable.

The outdoor amphitheater is very desirable, but the plush green lawn will require extensive water use, not consistent with Tempe's commitment to environmental conservation

Not sure what some of these places are or what you want to convey.

Lots of shade is needed.

Art and open spaces - right on! Great for community building and family activities.

There's nothing like very local cultural activities!

We are an outdoor community and like to use parks and golf courses, etc.

Like places to gather, but here in Kiwanis Park ... bigger gatherings at the park are a REAL NUISANCE for the neighbors (except low noise family/neighbor oriented activities like the boys scouts one-time events, walks, runs, The loud music from the parks.

Want to see community events but I'm not a sports fan. Want free or low cost music events for adults, but has to have shade.

Don't tear down single homes for this. In open spaces we could have these townhomes. But then we also need either high rent or immediate public transportation. Can we afford it)?

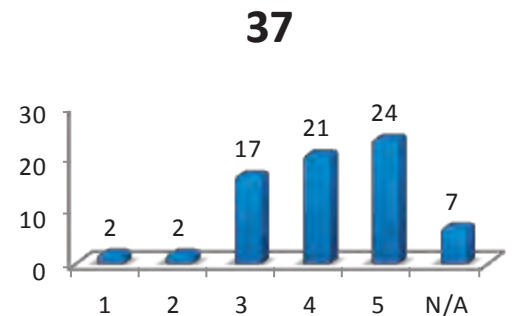
As long as the activities are privately funded.

Image #37



Image Rank: 19 out of 63

Average Rating: 3.95 out of 5



Comments

Dislike dirt, plain pave effect/like landscaping, solar

Solar on top of parking is a good idea

Would be nice but only in needed/large areas

Shade

Cover the top floor

Solar!!

It would be nice if the city would measure the back up space in parking lots so that normal size cars can back up and not hit other cars. Many of the lots in AZ Mills and Tempe Marketplace are just too tight for vehicles that aren't Smart cars. shaded parking is always a plus

I love the solar, win-win! But the other lots seem cluttered. I like the one that combines pavers and asphalt.

Top left photo is awful, others not so bad

We need more of these areas when large projects are developed.

Solar is great. Parking is a problem for Tempe and needs to be studied.

Shade & solar!

Landscape islands are critical. If we can get away from asphalt we can help minimize the heat island effect. I don't know how practical stabilized decomposed granite is long term but I love the concept. While solar covered parking is efficient.

Very critical of parking areas in my area because they are so inhospitable to anyone who walks, even from vehicle to store.

They are full of blacktop that contributes significantly to ambient heat. They have no shade trees.

Smart.

Image #37 (cont.)

Creative use of parking for city owned property is a good idea.

Solar panel shade is the most exciting! Next the native trees to give shade to parking. We just will never have too much shade going here...the more the better.

Solar shades are a must

More shade trees for parking. Less open exposed solar panel parking.

More shade and encourage developers to incorporate solar

Wonderful!

Shade, shade and more shade is my preference whether by landscaping or by the solar panels. I think the solar panels are absolutely superb.

Solar covered parking is a two-for. Win-win. Make it work.

Landscaping and/or solar covers are nice

Yes to more landscaping and less hardscaping. Yes, we should pay attention to parking treatments. I prefer some of the illustrations to others, but I'm asked to react to the collage.

Shade.

Like the solar panels best, then the native desert granite parking, the pavement at bottom left least desirable.

Definitely cover the parking spaces with solar panels. Covered parking areas are a necessity.

Shaded parking spaces that include renewable energy generation are the most desirable kind of parking improvements.

Additions like these show that the community is forward thinking and environmentally conscience.

Shaded by trees & structures whenever possible. Love the new parking lots covered with solar panels.

Let's harness the sun!

Encourages community.

The solar shade is such a creative option!

More covered parking in shopping centers and high use areas.

Efficiency and sustainability.

Using solar where there would normally be shaded areas, I'm okay with, of course solar plants are good. The stark modernist-style does not appeal to me. I wouldn't want them at Kiwanis Park at all. They hideous.

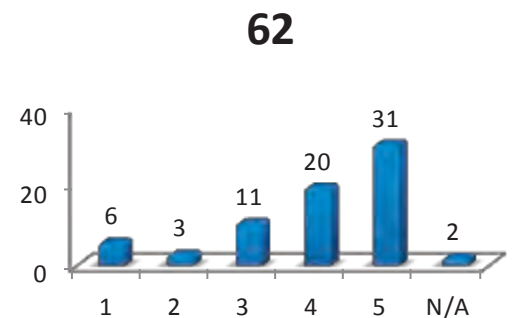
Yes to solar shaded parking.

Image #62



Image Rank: 20 out of 63

Average Rating: 3.94 out of 5



Comments

Wide streets

Like the trees and the wide bike and walking paths

Yes

Would be like downtown Tempe and is a mess

Car, bus/train, bike, pedestrian is good

Nicer design - best of multi-modal

Yes!! Build it...And they will come

Where do the buses go and come from? Trying to fit a square peg in a round hole. Most people in Tempe have cars because they don't work in Tempe and the public transportation doesn't go where we want to be.

Very futuristic, like it.

Want to live in a city that makes it easy to get around town in multiple ways. I would like to see more bike paths and pedestrian walkways.

This image is better since it provides more pedestrian shading

Like the concept of multi-modal options.

Don't we currently have this in most areas?

The concept is great but bikes and parked cars are a hazard.

Not a supporter of trolley! Need Orbit bus in south Tempe!!

The bike lane is visible and attractive - it's probably expensive, too, with all the color. The width is very nice.

Very important to a sense of place and safety for pedestrians and cyclists. Would prefer that bike lane be separated from vehicles.

Image #62 (cont.)

More filtered shade. More restful architectural designs.

More natural.

Looks like a well thought out future representation of Tempe.

I love the very well designated, wide bike paths.

Multiple transportation options are great!

Multiple transportation usage and clearly marked areas.

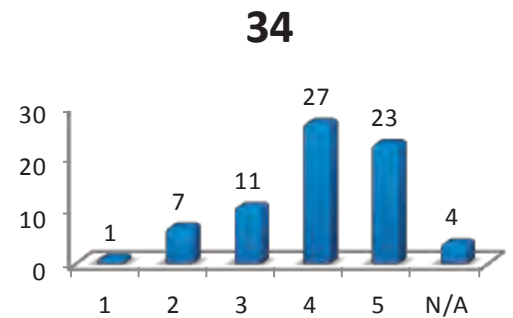
Have on Grande Avenue

Image #34



Image Rank: 21 out of 63

Average Rating: 3.93 out of 5



Comments

Mixed Use

Yes!!

Brick town - Need this bad

Limit locations

It only works with high density

Can get too modern and overbearing to surroundings

Don't like high density

I like the gathering place in front of businesses

No residential

Wouldn't fit in well to have this in our neighborhood

Vertically mixed use is preferred

No flat facades

This is another example of high density living with larger numbers of people who do not have the mentality of property owners. These types of buildings lose their new fresh look very rapidly because those living in them do not care for them.

Somewhat less ugly generic architecture

I like the idea of mixed-use but more advance work should be done before constructing mixed-use buildings to ensure there is demand for the business use. I see too many empty business fronts in Tempe and Phoenix where this concept is being tried.

To be encouraged. Better and more efficient use of land. Creates lots of jobs.

Image #34 (cont.)

Any of these could be nice in this area. I do have concerns about 4 stories plus. I don't know how viable it would be and would be concerned for the immediate surrounding neighborhood. The location would be a critical deciding factor. Very comfortable to live in, if well designed and planned.

I really like mixed-use development. It attracts people-oriented activity that is visible and interesting. It's accessible to pedestrians and people on bikes.

Canal edges are wonderful, safe bike-ways...but sometimes a bit bare in places needing more landscape attention.

Yes!

Look pretty nice and tasteful.

Maximize space and tax revenue.

Yes, pay attention to the details. Yes, have mixed use. But that's reacting to concept, not pictures. It's not one photo.

Antiseptic designs.

Needs to fit in with the surrounding landscape and buildings. The green and yellow ghastly thing on University near Beck/Hardy needs to be ripped down.

Not so crazy about the modern design themes.

I think the architecture should follow the trend of the existing properties.

The environmental impact of all new developments should be considered as carefully as the financial impact. Buildings appear modern, they do not add to an overall desert community feel (they look Midwestern).

I am NOT a strip mall fan, but this is how Arizona was built. At least they are multi-functional and convenient for the locals, which is better than single use.

I much prefer a real old fashioned downtown area.

Looks well maintained!

The more different the designs the better.

New styles of architecture would be nice to have

Rock, brick, dimension, character (not stark, sleek modern boxy for Kiwanis/The Lakes. Top left appeals to me more.

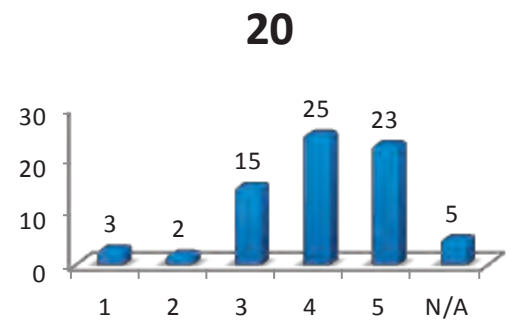
OK architecture, but really need wider sidewalks and shade.

Image #20



Image Rank: 22 out of 63

Average Rating: 3.93 out of 5



Comments

More Shade.

Trees are good.

Trees are a huge plus.

Generally good job.

Palm trees are nice.

Keep trees trimmed.

Save water.

Tasteful and if needed/when needed - just don't ignore.

Too much water usage.

Mixed trees .

Suburbia exemplified.

More of them, but natives - Low water use.

Landscape gives the neighborhood a welcome feel.

Native and desert adapted trees that provide plenty of shade and are properly maintained. No palm trees.

I don't like palm trees. They are messy and they attract pigeons.

The top two pictures are good examples, the bottom two are not

Failure to adequately maintain walls will bring down the value of the neighborhood and encourage others to abandon

More desirable to look at.

These are so generic they are devoid of character. There is nothing here that says, unique charming city.

Image #20 (cont.)

We need many more trees. How about some Chinese pistachio that turns color in the fall?

With the exception of the healthy mesquite in the upper left photo, these streets have no functional street landscaping at edges or in the median to provide shade and a sense of place.

Only if every tree under a power line is cut down and replaced by a bush that will never grow into the lines.

Public landscaping is important but again be smart about it. Water conservation is important to a lot of people. I recommend sticking with as much native vegetation as possible. Olive and orange trees are a horrible idea.

Native plants are the most desirable. This photo shows some. Palms are okay but native trees and shrubs would be even better.

Only upper right image is nice.

More shade trees/less ugly palm trees.

Lose the palm trees. Let's celebrate the desert.

Green, shade, oxygen.

The more trees the better.

Trees planted in the 1970's were not the right choice for the locations that have been put, the Palo Verdes are a much better choice for the desert and the space they have to grow

Yes to concept of landscape treatments.

Some nice trees and shade but planted in the wrong place.

Shouldn't be distracting to drivers.

Need more desert trees that use little water and make little mess.

Trees at side of the road should not extend over the highway. Palm trees are acceptable and attractive if not over 30 feet high.

I think the multi-directional use lane in the center of the streets is generally good to help prevent traffic accidents.

Seem like a basic street, not sure what you're trying to convey.

Landscaping is very important. Plants on the street side of a sidewalk (first photo), especially closest to residential side streets should be low-growing so that they don't interfere with seeing oncoming traffic when exiting the neighborhood.

If sustainable.

Ugly, but functional. It does buffer noisy streets and pollution from residential areas and people.

Clean streets and trimmed trees and grass.

I love trees, top two pictures more appealing to a neighborhood. Lakes is always appealing to the tree/nature lover (I don't live there, but like driving by and through it). Palm tree thing is not appealing to me

Trees = good; no big signage = good; neighborhood distinction = there isn't any so it'd be good to add some.

Image #10

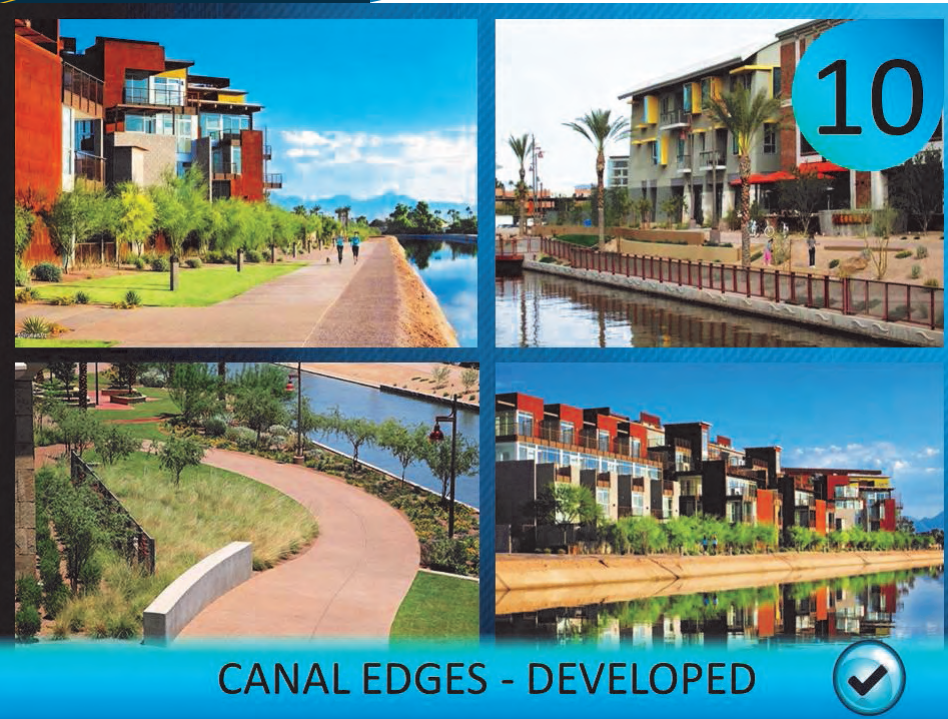
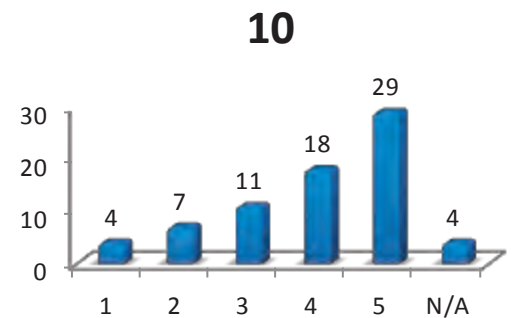


Image Rank: 23 out of 63

Average Rating: 3.88 out of 5



Comments

Aesthetical pleasing, feels cool

Attractive - public access allowed

Bottom left

No apartments

If public walkways are part of the development

Great use of the area but keep minimal, but no apartments

Too much favoring people who can afford the cost

Need shade and water stops

High density housing detract from the character area

Landscape requires maintenance / Copper thieves

More high density housing to crowd our neighborhood. This type of planning has already resulted in declining incomes in the 85283 zip code and crowding of streets etc. Developing the edges of canals for recreational use can beautify the area.

Public access is desirable.

Love it. As long as SRP can still do what it needs as far as canal maintenance.

Would prefer more protection along the edge of the canal in the form of curbs or light fencing. Always like an adjacent pathway, rather than having public access cut off from edge of canal

Canals, paths, green helps to make the area a little more pleasant instead of just brick and cement.

This should be private development not paid for by the city.

Color enhanced photos?

Interesting use of 'waterfront.' More sustainable than using treated effluent for lakes in residential development.

Image #10 (cont.)

A much better use for what is already there.

Developing the edges of the canals is a great idea. I am not sure what options are available but if widening the canal in certain spots is an option that would be great. San Antonio river walk is really just a widened canal and it works great for them.

These developments are a practical use of the land and attractive too.

Adds potential for mixed use with cafes, retail along water ways would hopefully increase bike and pedestrian traffic.

MORE SHADE

I like the green belt feel along the canals. I do not like the rust and yellow colors. I would think this was far more appealing with blue and green hues.

We need open spaces, not so happy that ASU is infilling the south bank of the Rio Salado with high density residences, now some plantings would be OK

Yes to the concept. But how will you know if we prefer any of these?

Nice to have public access to walk for miles along the water.

Great use of canals - adds to value and makes the area more desirable.

Apartments should be a maximum of 3 stories and spaced at least 300 feet from water.

"The landscaping here does not fit with Tempe's commitment to environmental conservation. Additionally, these modern cookie-cutter housing developments do not add individual character to the Tempe community; similar developments exist in other emerging communities.

Interesting architecture and landscaping encourages walking and biking. Public access along all canal edges is important.

It is most important to have a public thoroughfare through developed areas, and development is OK but I prefer natural surroundings.

Of course desert dwellers love water and green!

As long as they are accessible by the public. All look appealing except the rock thing on the top right. It's okay ...DISABILITY FRIENDLY/ACCESSIBLE IS VERY IMPORTANT... we have lots of seniors. And need opportunities for families to enjoy Tempe who a family member with a disability.

Landscaping and paving canalways would be great!

Modified use OK as long as it would not upset the neighborhood and has ample parking and landscaping.

Image #2

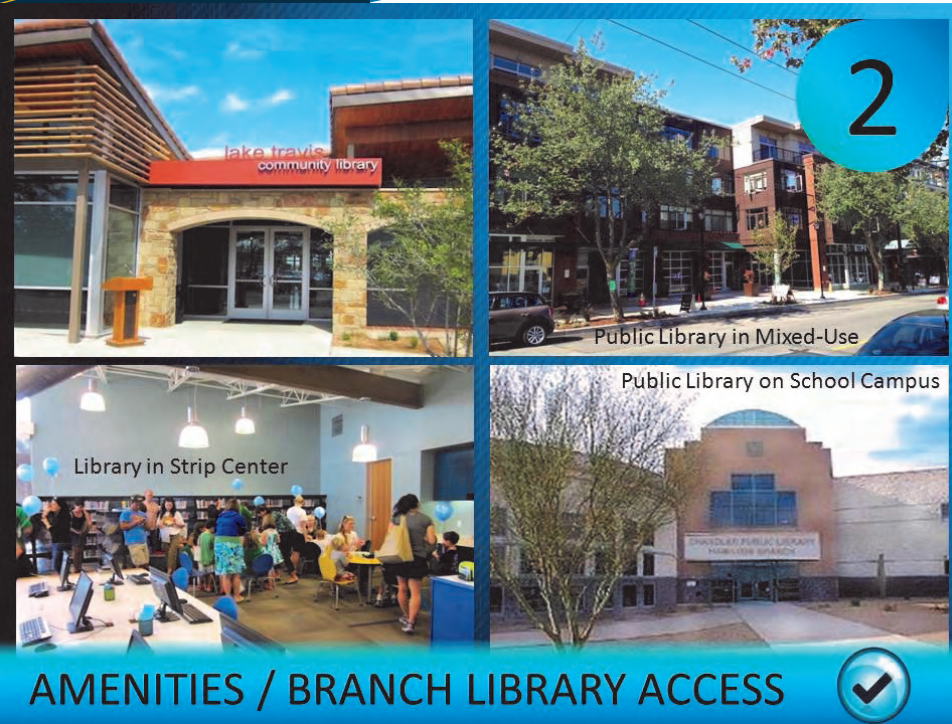
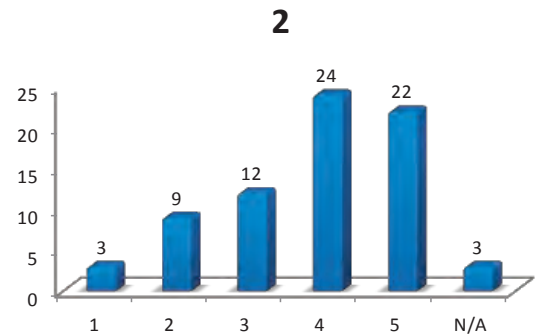


Image Rank: 24 out of 63

Average Rating: 3.76 out of 5



Comments

Easy Access

Not Important

Who will staff?

Where does book budget come from?

We have a good library now

Don't all schools have a Library?

Need more info on mixed-use

In Mixed-use

Like idea of more small Libraries - just a few things though

Have more branch libraries; Not so cutesy places

Diversify Library locations - Central Library is obsolete

Need more than one Library for city

Tempe is not a huge city. Other cities are closing and or selling branch libraries because they can't afford to operate them.

If the demand is there, I like the idea of adding a branch library in another location in Tempe, e.g., one of the other community centers or a school site.

Libraries have to remain relevant with society, including providing down loads of books, magazines, etc.

Indoors and comfortable.

With almost everything available online how many "libraries" do we need?

Unique way to utilize some closed schools and vacant commercial space in strip malls

Image #2 (cont.)

A branch library is needed. Using an empty space in a strip mall would make sense since the traffic already exists.

Branch libraries are most successful if the website is updated to transfer books people want.

Like the New England look.

Like the idea of branch library access into a mall or mixed-use area, because kids and adults are attracted by the browsing/reading/conversation they see.

Traditional Library services are becoming redundant to a society with internet access, however, a place to provide internet access and access to traditional reading material should be provided, just keep in mind there will be fewer customers.

Situating a library in an area like the feel of a neighborhood book store would be better.

Again, a waste of money. Tempe already has a nice library easily accessible to residents. Spend the money on city-wide Wi-Fi and inexpensive Chrome books or the like for those that don't already have a computer. Expanding the physical presence of the library.

These could serve the greatest number of people at a time. Have the most books, etc. available all in one place.

I very much like the stand alone building libraries. However, I know there may be a need to fill vacant space and have more accessibility in the community, thereby, offering more locations at diverse accommodations.

Mixed use is great. I hate the strip-mall idea. We have too many and many of them sit empty. The developers need to be encouraged to make them more inviting for both retailers and visitors.

This makes a lot of sense. Particularly if there is a way to transfer books from the main library and pick it up at a branch. That is a critical function for small branches.

I like finding access to library resources in multiple locations, easily accessible

Public library in mixed use setting is most attractive.

I believe that smaller branch library's located in strip centers would be used by the public

Good to get the books out to the people, but if I go to the library and the books I want are out in a branch somewhere, it limits my ability to access them. Also, will it drive up costs/taxes to have all these branches?

They do nothing to make me feel like I want to enter any of those

More access to books the better.

Branch libraries should be download zones for electronic media for the main library.

Lacks community individuality. These buildings could be located anywhere within the US.

Library as an information and community center is very important.

If we are hoping to have branch libraries, they need to be in our neighborhood. Would rather see any extra money spent to keep the current library open with more hours.

See comment above and yes....take the learning and libraries to the people vs the other way around!

Lots of books reaching the people in they go to regularly.

Living reasonably close to libraries in Tempe, I don't see a need for them near stores or in schools where there are libraries.

Love the idea of community knowledge centers with computers and group work spaces. Should be open to locals (kids, seniors) on orbit bus route, for meetings and getting to know neighbors.

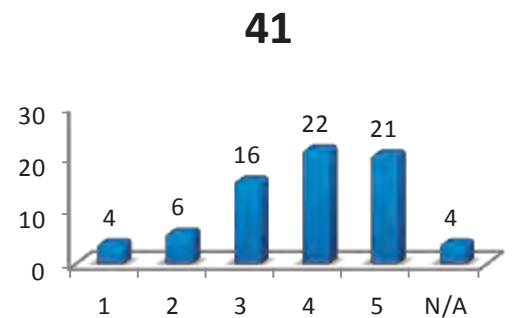
Should continue to be our neighborhood.

Image #41



Image Rank: 25 out of 63

Average Rating: 3.72 out of 5



Comments

Downsize

Want all that

Much better looking

Deteriorates quickly

Much more eye-appealing

Apartments on top floor? Not a fan

No - keep this stuff out - want more family stuff

Like concept and hate architecture

Confusing

Density of living is too great. Likely to generate more traffic

Generic architecture

I find mixed use esthetically pleasing, but there needs to be demand for the business use.

Very blah.

Depending on location.

The concrete organic design is visually interesting. Due to our sun, the color accents will fade and not, visually, have staying power....just look at the College street pedestrian bridge; it used to be a vibrant red, now it looks faded and worn.

Building looks a bit hodge-podge.

Parking here?

So, what are the uses here? Yes, to concept.

Easier to fill the residential than the commercial. Lots of see-through commercial already.

Image #41 (cont.)

Mishmash of add-ons, probably done to incorporate a brewery, after the architect has tasted the brew.

Better, but I'm not sold on residences above businesses being desirable for me.

More green, but building is ugly.

This would tend to bring situations where people live in cramped apartments over businesses.

Attractive, loveable, workable, small community.



CHARACTER AREAS

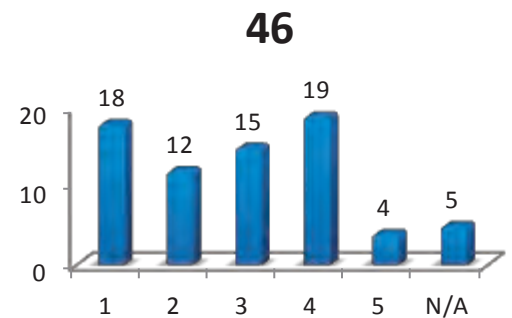
5 LOWEST RANKED IMAGES

Image #46



Image Rank: 59 out of 63

Average Rating: 2.69 out of 5



Comments

We have enough of those

Block the views

Too dense

Don't want high density

Not so overwhelming

Feels like apartment living

No - too much moving in and out and renting out

Too many stairs for older verse younger kids

Too dense, too tall, doesn't belong here

No more in our Area

High density housing that would increase traffic. The problem is that most people who live in Tempe don't work here.

Slightly less ugly generic architecture

We need an assortment of housing: single-family, patio-homes, townhouses, apartments. etc.

Depending on location.

I think these work best further north in the city.

Ugly

Lovely...Leave off the grass. The grass just has to be mowed.

Hate the Spanish look such as you see at the Montelucia in Scottsdale.

Yes to a variety. How is this multi-family slide different from previous slide? Looks good to me, but what does that mean?

Chopped up and goofy.

Image #46 (cont.)

Better - more creative and better street appeal

Less attractive, but I like townhouses in general.

I don't care for these designs. Too complicated and not attractive.

Beautiful

Parking ????

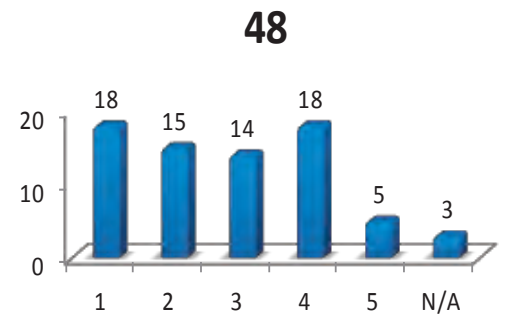
Having height restrictions for commercial and residential is critical. Look at Boulder Colorado.....the mall, commercial, etc. are all at a height that is respectful and relative to us humans....we feel part of the community, not overwhelmed.

Image #48



Image Rank: 60 out of 63

Average Rating: 2.67 out of 5



Comments

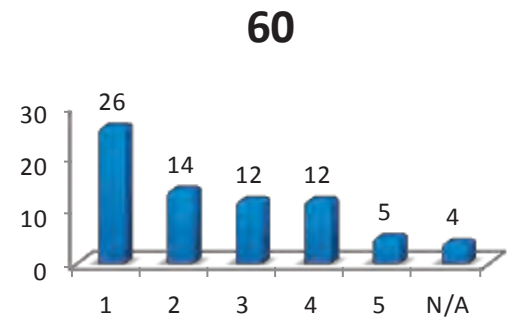
Dormitory?
NIMBY
Too modern
Don't want high density
Too industrial looking
I prefer actual homes with yards and privacy
Enough - No
Keep design appropriate to surrounding
Too dense, too tall, doesn't belong here
No more in our Area
This photo is not attractive. It looks too concrete-like.
The 1970's is over.
Find this ugly. Too angular.
Provides affordable housing.
A little better in the creative architecture design area.
Depending on location.
Finish looks like it would be very hot

Image #60



Image Rank: 61 out of 63

Average Rating: 2.36 out of 5



Comments

Looks like a nursing home

Ugly.

Uglier still.

Looks like hotel.

No too big and boxy

Too much.

Too Big and Too Blocky.

No more apartments/multi-unit

Boring architecture

Doesn't fit Arizona

This looks like downtown Tempe. I don't go there because it is hard to drive, park and enjoy.

No thank you!

It looks very generic and quite large. I wouldn't want to be there.

Looks like a theme park.

Artificial.

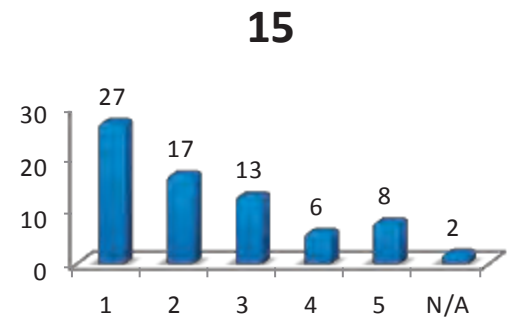
Looks too choppy.

Image #15



Image Rank: 62 out of 63

Average Rating: 2.31 out of 5



Comments

- Better uses of Money
- Waste of Money
- Waste of Money
- Silly, money waster
- Too much - Creates confusion
- Looks tacky
- Not so much
- Neat idea
- One type of C.W. easily!
- No
- Tacky! Unattractive
- Delightful - use art students from ASU
- Candy
- Hope
- Waste of money.
- Go for beauty, not humor. Streets are dangerous, not funny.
- Do not like this design.
- This example is too cutesy!
- Like crosswalks that are protected and where wheel chairs and baby carriages can get through without curbs.
- Cute and cheesy.

Image #15 (cont.)

Just plain silly!

Very clever but difficult to execute. I prefer another method to highlight the crosswalk.

I appreciate the effort to bring art to town but think it is dangerous because it is distracting. Form follows function.

Really? I think not!

Looks like Disney land. Looks childish, not tasteful."

The crosswalks themselves don't need to be comical. Just put them where they need to be and clearly mark them for both the pedestrians and the drivers.

Love it! Anything that wakes people up to the need for caution is wonderful and to make it amusing or attractive is a plus.

I put this in the roundabout category, no one in AZ likes the roundabouts! Use creativity elsewhere.

Extremely tacky.

Ugly

I think the intent is great. The execution, not so much.

Gross.

Clever, but the image may not be so evident at street level. Yes, to being creative in ways that keep people safe.

I like it - creative and sets an intersection apart from others

Confusing.

I don't like the pattern.

Not cartoonish, though.

OK - safety is more important, but why not make it fun and creative?

Ugly! What is the need?

Too silly and confusing for a busy intersection.

Image #19

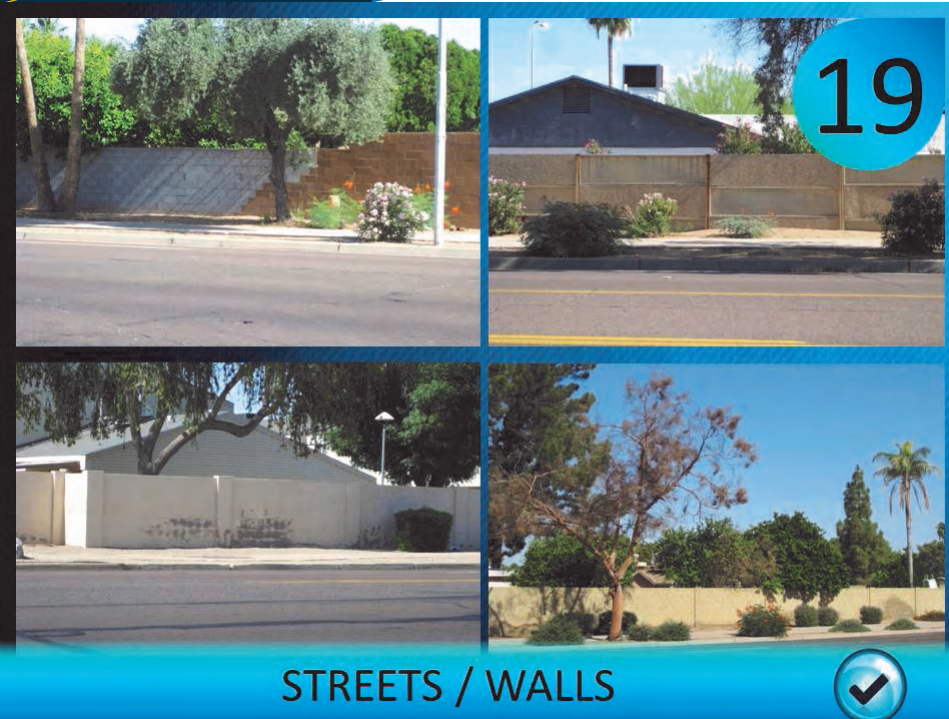
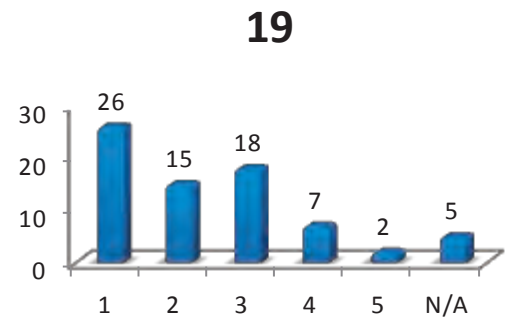


Image Rank: 63 out of 63

Average Rating: 2.18 out of 5



Comments

More Shade

Higher Sound Barrier

Ugly

Same - Ugly walls

Standardize height, color, style of walls, maintain streets

Don't like the old walls

Better streets (as above #8)

Same as slide #18. If we are going to have walls, they should be maintained.

Need better upkeep. This would help with noise but must be kept up and graffiti removed quickly to keep the neighborhood from having a run-down appearance.

The fence on the top right is horrible. I had one and replaced it with a nicer block fence.

Needs to be maintained by neighborhood HOA. Must include requirement that dead plants must be replaced immediately.

Landscaping to be in front of walls and anti-graffiti coating applied.

Need upgrades, green, plants, etc.

Upkeep, maintenance, repair and replacement are the property owners responsibility.

The long straight walls are very unattractive. Something is needed to break up the visual impact.

Some walls are prettier and it's pleasant to walk past them.

Those Continental cement panel walls have almost disappeared it seems. Hope they will be replaced with something interesting.

A good alternative for some people. Having some design elements really helps the look.

Image #19 (cont.)

Many of the street walls that were constructed from poured concrete panels are failing and an eye sore

Top right is a problem for the homeowner. Expensive to replace.

Sprinkler up against walls never work. Hope the dead tree gets removed soon. Liability waiting to happen.

Clearly needs maintenance.

Need upgrades to be attractive, especially the top right - needs to be replaced!

Block fences still the best for reliability and sound reduction. Wood fences have high maintenance and poor sound reduction.

Don't like the paint coming off the white walls, don't like white walls, don't like the rusty sectioned walls Standard brick on the bottom is fine.

How can we fix the blighted walls? Looks terrible.

KIWANIS / THE LAKES

Character-Defining Elements



Character-defining elements are the terms used to describe a wide range of qualitative themes including social aspects, design aesthetics, or the built environment where we live. These elements include aspects you want to preserve, what you like now, and/or how you want it to be in future. From the *Character Area Workshop* on June 2 and June 26, 2014 participants identified twelve (12) key character elements. These are the elements we heard from you that best describe the **Kiwanis / The Lakes** Character Area.

Livable
attractive, desirable, convenient, comfortable, established, neat & well maintained

Friendly
people, family, neighbor and pet-friendly, all ages + ethnicities, accommodating, creative, welcoming, tolerant

Local
local business + shopping, mixed use hub, independent, eclectic, people-oriented

Limited Density
Low-density, single-family dominant,

Lush
shaded, beautiful landscaped areas, attractive streets

Walkable/Bikeable
paths, canals, sidewalks

- ATTRIBUTES**
- Desirable in-city location
 - Distinguishable architectural variety (not all the same style)

- ATTRIBUTES**
- Sense of community that keeps people living in this area for decades
 - Desirable place for families in all stages of life

- ATTRIBUTES**
- Support and appreciate Whole Foods, Changing Hands Bookstore, Trader Joe's
 - Local places – Steve's Espresso, 24 Carrot, The Watershed

- ATTRIBUTES**
- Mix of homes of all sizes and for all ages

- ATTRIBUTES**
- Mature trees
 - Landscaped streets

- ATTRIBUTES**
- Neighborhoods are walkable and bikeable
 - Bike and pedestrian bridges over US 60 are outstanding
 - Established bike lanes are great; add them to all arterial and collector streets

- GAPS**
- Baseline/Rural/Lakeshore to develop as: attractive multi-level development with shops on bottom and housing on top; open space, walkable areas with trees/ flowers and water features; a place where people of all ages would want to go – theater, shops, etc.; make it a quality infill opportunity and to serve as a new hub
 - Bike and walkable businesses
 - Stronger code compliance effort (landlords to keep up rentals and cite homes with overgrown yards)

- GAPS**
- Amenities for teens

- GAPS**
- Repurpose vacant/aging strip centers
 - Actively attract a mix of businesses that can create activity levels and interesting people-oriented destinations (like the Changing Hands / Wildflower / Trader Joe's)
 - Want high-end independent restaurants; to see local identity similar to Arcadia (Postino's, or La Grand Orange)
 - More locally owned restaurants/businesses
 - Reprogram retail and restaurant within the Lakes
 - Need better balanced tenant mix at older strip centers (i.e. Marco de Niza Plaza)
 - Use Ken McDonald lot to host weekly food truck dining
 - Encourage business growth within Baseline + Rural Growth Area
 - Outdoor dining restaurants highly encouraged
 - Restaurants that offer fresh, healthy food, local food, affordable prices
 - Want bird food store, bakery, multi-cultural restaurants and movie theater

- GAPS**
- Don't overdevelop with apartments (no more apartments)
 - If density is approved (by City) then it should lower traffic (i.e. senior living facility were fewer persons drive)

- GAPS**
- Restore and refresh landscape and block walls on arterials; consider incentives for replacing walls to upgrade appearance – target Rural, McClintock, Baseline and Guadalupe roads
 - Shade along arterial streets; better landscaping to define area
 - Improvements to collector streets including increased shade along sidewalks and bike lanes
 - Additional canal landscape and hardscape – soften the canal experience
 - Explore identifiable theme for the major arterial intersections (could include color of street signs, lighting color, or character area signage.

- GAPS**
- Pedestrian connections within and between developments; create more crossings to tie commercial corners together
 - More protected or separate walk/bike paths; routes in north-south direction
 - Continue separate bike paths – lighted and paved to connect to Downtown Tempe
 - Improve pedestrian-friendly connecting paths with neighborhood access to and lighting along the Western Canal
 - Bike and walkable businesses and local destinations

KIWANIS / THE LAKES

Character-Defining Elements



Education/Culture

educated residents, school grounds access /shared use, learning and continuing education

Future Oriented

progressive, forward thinking evolving

Sustainable

solar, clean environment, open space, shade

Active

dynamic, vibrant, recreation, outdoor activities
pride-of-ownership, civic engagement, citizen-driven development

Connected

convenient, neighborhood circulator (Orbit), drivable, accessible, community-centered meeting-places

Safe

quiet, peaceful, stability
crime prevention, neighborhood watch, law enforcement, well-lit

ATTRIBUTES

- Have good schools and school district; and special programs (i.e. Autism)
- Kiwanis Park fishing, recreation center wave pool, festivals (i.e. Halloween Carnival)

ATTRIBUTES

- Have good schools and school district; and special programs (i.e. Autism)
- Kiwanis Park fishing, recreation center wave pool, festivals (i.e. Halloween Carnival)

ATTRIBUTES

- Parks that collect rain water
- Large solar installation at SE Tempe Treatment Plant
- Community garden (Rural /Guadalupe)

ATTRIBUTES

- Western Canal Path is a great part of the neighborhood
- Kiwanis Park and abundance of neighborhood parks are excellent
- Parks are maintained and designed with good taste and not just with low budget landscape dictating the design
- HOA and NA involvement
- Ken McDonald Golf Course

ATTRIBUTES

- Easy access to freeways
- Baseline, Rural and McClintock are prime transit streets

ATTRIBUTES

- Tempe Police are quick to respond to security concerns when community members call
- Feeling safe in our neighborhood

GAPS

- Neighborhood park at each one-mile block with playgrounds and neighborhood gathering places
- Joint use/shared use agreements to use schools in area for public meetings and activities
- Educational and community workshops utilizing schools
- Use Kiwanis Park as an entertainment space and for more festivals
- Encourage use of local parks for kids
- Neighborhood "mini" libraries - i.e. adapt and reuse old space (Arby's at Guadalupe/Rural) for community space, like a library tech branch or mini library

GAPS

- Continue to develop in a way that promotes bike and walkability and transit access
- Support expansion of local business and actively recruit business, restaurants + retail areas to expand offerings to the area

GAPS

- Bring solar panels to parks, grocery stores and utilities
- Find retail businesses to sell and install rooftop solar for homes and small businesses
- Ensure new development means more trees and greenery
- Provide shade plan for Kiwanis Park
- Electric hybrid vehicle charging
- Want a community garden, urban farm and open-air market year round

GAPS

- Improve Scudder Park
- Enhancement of recreation options at Kiwanis Park – upgrade fields (to host more sporting events), add dog park or dog water park
- Add skate park at: (one location) Gaicki, Kiwanis or Stroud Park
- Optimist Park basketball lights on court and restrooms
- Stroud Park needs teen-friendly amenities
- Local community involvement in development changes; importance to understand what is happening in the character area; ensure diversity outreach in planning meetings
- Neighborhood leadership teams or Community Committees
- Better assist neighbors to participate
- Form "weed removal task groups" within street community; get use organized to help each other

GAPS

- Extend Neighborhood circulator (Orbit) to area, connecting area to downtown Tempe, Library and other key Tempe destinations
- More bus pullouts to improve traffic flow
- Places to gather with room for music/arts/festivals
- Do not impede traffic flow on major streets; it only pushes traffic into residential side streets

GAPS

- Reduce speed limit to 35 along Baseline/Rural for safety and to help noise pollution.
- Enforce noise ordinance against barking dogs
- Residential speed humps where appropriate
- Shared center lane at Rural Rd fork is a major problem
- Improve neighborhood lighting in the front yard areas where inadequate (i.e. leading to Aguilar Elementary)

Additional Ideas for consideration suggested by staff:

- Develop design guidelines for "canalscapes", commercial corners, mixed use and multi-family development
- More opportunities to integrate public art in commercial and neighborhoods
- Amenities to attract young families
- Open (improved) access to and use of school playfields for non-school hours/days
- Work with HOA's, NA's and neighborhoods to identify walk routes
- Complete connection along El Paso Path
- Activate canal areas (festival, art, rest stops, adjacent development opportunities, more crossings)
- Tree planting effort in areas where more shade is needed

KIWANIS / THE LAKES

PROJECTS + PRIORITIES

PROJECT / ITEM	DESCRIPTION	Time Estimate	Cost Estimate	City Controlled	City-Influenced	Relies on Others	CP Funded	Rooftop-Driven	Asset Management Plan	NOTES	
TIER 1	13 Housing Options	Don't over-develop with apartments [no more apartments]	☼☼		■	■	■		✓		Affected by legal preclusions against housing discrimination and land use rights.
	15 Local Restaurants + Retail	Support expansion of local businesses and actively recruit business, restaurants + retail in areas to expand offerings to the area	☼☼			■	■		✓		Economic Development to market for businesses; tends to be market driven
		Actively attract a mix of businesses that can create the activity levels / interesting destinations [like the Changing Hands / Wildflower / Trader Joe's]; want neighborhood-based retail shops	☼☼			■	■		✓		Economic Development to market for businesses; Option for Design Guidelines for CA7
		Walking and bike-friendly businesses	☼		■	■	■	✓			Marketing for businesses; Bikelt program offers potential for wayfinding to local destinations
		Ken McDonald Clubhouse could host a different food truck each Saturday, it might make the clubhouse café / restaurant a more appealing place	☼☼		■		■				For further action of City and CA8 to work with Golf Course vendor or YMCA nearby
		Expand retail tenant mix for Marcos de Niza Plaza [Serrano's]	☼			■	■		✓		Work with commercial center owners; Economic Development to assist in attracting new businesses
		Expand / reprogram retail center within The Lakes [south of The Watershed + Pier 54]; attract a bakery	☼☼				■	■		✓	Work with commercial center owners; Economic Development to assist in attracting new businesses
	Desired goods and services include: high-end independent restaurants [to see local identify similar to Arcadia with Postino's, La Grand Orange]; outdoor restaurants highly encouraged; restaurants that offer fresh, healthy, local food, affordable prices; more locally owned restaurants / businesses; multi-cultural restaurants; movie theater; bird food store	☼☼				■	■		✓		Economic Development to market for businesses and work with commercial center owners
	14 Mixed-Use Hub @ Lake Country Village	Something nicer for Baseline / Rural / Lakeshore: No fast food, title loans or pawn shops, or more big box retail	☼				■	■		✓	Local private property rights preclude restrictions on specific retail uses unless code text amendment or overlay is created to legally prohibit. Distance separation requirements might be one avenue for this. Options for Design Guidelines for CA7 to address redevelopment of mixed use sites
		Encourage business / growth within Baseline + Rural Growth Area	☼☼				■	■		✓	Community Development to work with current ownership to understand all stakeholders objectives. Economic Development to market for businesses and work with commercial center owners
		At Baseline Rd + Lakeshore Dr develop as: attractive multi-level development with shops on bottom and housing on top; open space, walkable areas with trees / flowers and water features and place where people of all ages would want to go – theater, shops, etc.; make it a quality infill opportunity at Lake Country Village; Lake Country Village to serve as a new area hub within Baseline + Rural	☼☼					■	■		✓
	16 Community Involvement / Outreach	Community involvement in development changes; i.e. need to understand what's happening at Lake Country Village	☼			■					Tempe Involving the Public Manual - expanded options for community input into development
Expand diversity in Planning Meetings; ensure outreach of demographics community is represented		☼			■	■	■			Tempe Involving the Public Manual - expanded options for community input	
18 Walkability / Shade Amenities	Tree-lined streets with shade trees along major arterial streets and better landscaping to define area; "Plant-a-Tree" program; ensure new development means more trees and greenery; provide shade plan for Kiwanis Park	☼☼☼	\$\$\$\$	■	■	■	✓			Tree and Shade program initiating; Tree donation program in place; Option of Design Guidelines for shade in CA7; Park Master Plan may need to be updated	
	Improvements to collector streets including increased shade along sidewalks and bike lanes	☼☼☼	\$\$\$\$	■			✓			See Proposed TMP Bike Boulevards (Bikelt) and Streetscape improvements	
17 Transportation Options	Orbit bus to South Tempe [connect to Downtown Tempe / Library and other key Tempe destinations]	☼☼	\$\$\$\$	■				✓		See Proposed TMP Bike Boulevards (Bikelt) and Streetscape improvements	
15 Recreation, Culture + Tourism	Improve Scudder Park	☼☼☼	\$\$\$	■	■		✓		✓	Scudder Park improvements (playground) for 2015-2016; See Asset Management Program	
14 Code Enforcement	Need stronger code compliance effort: regulations for landlord to keep up landscaping of rental houses; and cite homes with overgrown yards	☼	\$\$	■		■				Code Compliance operations are expanding	
	Optimist Park -- basketball court area need trees trimmed	☼			■				✓	Use Tempe 311 for Public Works maintenance requests	
	Form "weed removal task groups" within street community; get us organized to help each other	☼	\$	■	■	■				Options for NA's and HOA's to beautify their neighborhoods	
	Enforce noise ordinance against barking dogs	☼			■					Code Compliance operations are expanding; Use Tempe 311 for code violations	
14 Kiwanis Park / Space Programming / Events	Use as entertainment space / more festivals; park area could be "upgraded" to allow for additional outdoor fields enable to market more effectively as host for sporting events; add dog park or dog water park; add skate park at Kiwanis	☼☼☼	\$\$\$\$	■			✓	✓		Park and Recreation Master Plan may need update; For further involvement of CA7 and City	
12 Neighborhood Destinations for Teens / Youth	Need activities and amenities for teens; longer city park hours; add skate park at: [one location] Gaicki, Kiwanis or Stroud Park	☼☼☼	\$\$\$	■			✓	✓		Park hours are a specific neighborhood issue and priority of neighborhood to address with City	
	Encourage use of parks [to replace kids playing in streets and in front of homes]	☼				■				Marketing park and recreational amenities within CA7;	
11 Exterior Walls	Restore and refresh landscape and block walls on arterials; consider incentives for replacing walls to upgrade general appearance throughout neighborhood; target Rural, McClintock, Baseline and Guadalupe Roads	☼☼☼	\$\$\$\$	■	■	■	✓		✓	See Asset Management Plan; Street Rights-of-Way are being evaluated city-wide. Further CA7 and City involvement. Option for Design Guidelines for CA7 to address walls (as repaired/replaced)	

LEGEND

\$	<100k	☼	Short-term project [1-2 years]
\$\$	100 - 500k	☼☼	Mid-term project [2 - 5 years]
\$\$\$	501k - 2M	☼☼☼	Long-term project [5-10 years]
\$\$\$\$	2M +	☼☼☼☼	Extended-term project [10+ years]

KIWANIS / THE LAKES

PROJECTS + PRIORITIES

PROJECT / ITEM	DESCRIPTION	Time Estimate	Cost Estimate	City-Controlled	City-Influenced	Relies on Others	CIP Funded	Rooftop-Driven	Asset Management Plan	NOTES	
TIER 2	9 Educational Partnerships	Create joint-use / shared-use agreements to use schools in area districts for public meetings and activities; partner to utilize school signs for neighborhood activities and community workshops	☉ ☉	\$\$\$	■	■	■	✓			For further action by CA7, City and School District
	8 Walkability / Connectivity	Pedestrian connections within and between developments [such as McClintock + Guadalupe] to foster connected "hub"; create more parking and street crossings at Guadalupe / McClintock to the all four corners together	☉ ☉ ☉	\$\$\$\$	■	■		✓			Design guidelines for CA7; Community Development standards strengthened
	8 Walkability / Connectivity / Canal Treatments	Continue separate bike paths [lighted and paved] to connect to Downtown Tempe	☉ ☉ ☉	\$\$\$\$	■			✓			See proposed TMP Paths and Bicycle Boulevards
		Improve pedestrian-friendly connecting paths, with neighborhood access to + lighting along Western Canal	☉ ☉ ☉	\$\$\$\$	■		■	✓			Establish Canalscapes (design) Guidelines for canal areas; Collaborate with SRP on options to improve canal areas
		Additional canal path landscaping and hardscape - soften canal experience	☉ ☉ ☉	\$\$\$\$	■			✓			Establish Canalscapes (design) Guidelines for canal areas; Collaborate with SRP on options to improve canal areas
	8 Environment + Sustainability / Energy Savings	Bring solar panels to parks, grocery stores, and utilities; find industrial-retail business to sell and install rooftop solar for homes and small businesses	☉ ☉	\$\$\$		■	■				City / Utility providers to provide energy efficiency outreach with residents/businesses
		Electric / Hybrid Vehicle Charging Stations [EVCS]	☉ ☉				■				Market awareness of existing charging stations; evaluate opportunities to expand locations within CA7
	7 Neighborhood Character	Support small neighborhoods with character!	☉ ☉	\$	■	■	■				Neighborhood Services - continue communication efforts between neighborhoods and City; Publicize neighborhood grants program
		Identifiable theme for the major arterial intersections [could include color of street signs, lighting color or character, gateway monument, signage, etc.]	☉ ☉	\$	■	■	■	✓			Design guidelines for CA7; Implemented by CIP and through development activity
	6 Commercial Infill / Adaptive Reuse	Repurpose vacant / aging strip centers	☉ ☉	\$\$\$		■	■				Commercial storefront program helps with "face lift" at commercial centers; Economic Development Further action to work with commercial property owners
6 Bus Amenities / Arterials	More bus cut-outs to improve traffic	☉ ☉	\$\$\$				✓			Further CA7 action as proposed TMP's transit and street projects are planned	
6 Neighborhood Traffic / Circulation	Do not further impede traffic flow on major streets [it only pushes traffic to residential side streets!]	☉ ☉		■	■		✓		✓	See proposed TMP for multi-modal improvements; Traffic-calming in residential neighborhoods an option to discourage significant cut-through traffic	
	Residential speed humps where appropriate	☉ ☉		■	■		✓		✓	See proposed TMP for multi-modal improvements; Traffic-calming in residential neighborhoods an option to discourage significant cut-through traffic	
6 Community / Event Spaces	Community meeting + gathering places; places to for community to gather with room for music / arts / festivals	☉ ☉ ☉	\$\$\$\$	■			✓			Recreation/event programming; work with City to evaluate Kiwanis Park or Ken McDonald GC for improved event space	

TIER 3	4 Walkability / Bikeability	More protected or separated bike / walk routes on arterials in north-south direction	☉ ☉ ☉	\$\$\$\$	■	■	■	✓			See proposed TMP
	4 Shade Amenities	Tree-lined streets; a "Plant-a-tree" program; ensure new development means more trees and greenery; provide shade plan for Kiwanis Park	☉ ☉	\$\$\$	■	■	■	✓		✓	Tree and shade program initiating; Tree donation program in place; Code compliance for commercial landscape plans
	3 Site Design / Walkability	Not all buildings need to be right next to sidewalk	☉ ☉		■	■	■		✓		Option for design guidelines for CA7
	3 Employment Options	Neighborhood Leadership Teams or Community Committees	☉			■	■		✓		New Tempe Involving the Public manual; Neighborhood Services interaction/communication; independent options such as the TNT group
	3 Outreach + Participation	Better assist neighbors to participate; lack of City communication to condos / townhomes; the city seems to ignore HOA residents; we provide amenities, pay taxes and assessments.	☉	\$	■	■	■				New Tempe Involving the Public manual; Neighborhood Services interaction/communication; independent options such as the TNT group or neighborhood Facebook
	3 Housing Options / Aging in Place	Small patio homes [for seniors to downsize and live independently]; and options for cottage or multi-generational housing	☉ ☉ ☉		■	■	■				HIPP program for SF enhancement; new housing responding to market; design guidelines for CA7
	2 Library Access / Services	Consider vacant free-standing building [i.e. Arby's on Guadalupe / Rural Rd] to use as a library tech. branch	☉ ☉ ☉	\$\$\$	■			✓			Further action by City and CA7 to evaluate/plan for library access/library space
		Neighborhood "mini" library in front yards [take a book / leave a book]	☉ ☉		■						New concept - further action by City and CA7; consider along with other suggestions for library access/library space in CA7
	2 Recreation Amenities	Optimist Park - basketball courts need lighting	☉ ☉	\$	■					✓	See Asset Management Program; Park Master Plan may need update to review plan for park
		Neighborhood park in every one-mile block with playground for neighborhood meeting places	☉ ☉	\$\$\$	■					✓	Parks achieved for this area; See Asset Management Program for playgrounds updates
2 Traffic / Noise	Reduce speed limit to 35 mph along Baseline and Rural to help noise pollution	☉ ☉		■						See proposed TMP related to safety, intersection and potential for arterial improvements	
1 Density	If high density is approved by the city, then it should lower traffic [i.e. senior living facility, where fewer persons drive]	☉ ☉		■						Affected by legal preclusions against housing discrimination and by entitled land use rights; The effort to minimize impacts of traffic is currently part of City review process	
1 Lighting	Improve neighborhood lighting in the front yard areas where inadequate [i.e. leading to Aguilar Elementary]	☉ ☉ ☉	\$\$\$\$	■			✓			See proposed TMP	
1 Streets	Shared center lane at Rural Rd. fork is a major problem	☉ ☉	\$\$\$\$	■			✓			See proposed TMP	

LEGEND

\$	<100k	☉	Short-term project [1-2 years]
\$	100 - 500k	☉ ☉	Mid-term project [2 - 5 years]
\$\$\$	501k - 2M	☉ ☉ ☉	Long-term project [5-10 years]
\$\$\$\$	2M +	☉ ☉ ☉ ☉	Extended-term project [10+ years]

Group Facilitator	New Comment (added)	Comment considered previously?	Modifies the List?	Included in Plan?
Mark Vinson				
	Please add more north/south bike lanes	Yes	No	Yes
	Need stronger code compliance effort	Yes	No	Yes
	Develop Lake Country Village with local small quiet restaurants and entertainment; Wi-Fi services	Yes	Yes to help define character	Yes
	Please keep Lake Country Village mixed use with minimal apartments	Yes	No	Yes
	Small theater-playhouse	No	No	
	New idea for Kiwanis Lake - redevelop boat ramp area - Café on the lake + small bar with bait. Family friendly dining. In daytime- old time good snack bar. In evening - nice dining cave for local adults with landscape, comfortable seating and shade.	No	No	As one option to examine, Yes
	Kiwanis Community Event spaces: build a fire pit gathering area	No	No	As one option to examine, Yes
	Kiwanis activities - if increased no loud music, require any amplification to be turned toward industrial area.	No	Yes to help define character	Yes
	Kiwanis Park - Local cart vendors be allowed (by permit) on weekends. Would complement the snack bar already there.	No	No	As one option to examine, Yes
Sherri Lesser				
	If city looking at new community center, need to provide the programming to activate the space. Changing Hands Books a good example of programming.	No	No	No, but understood
	Walkable street side connectivity of the Guadalupe/McClintock intersection is important. Ped bridge over, tunnel under like Biltmore area.	Yes, except bridge/tunnel idea	No	Yes, except bridge/tunnel idea

Group Facilitator	New Comment (added)	Comment considered previously?	Modifies the List?	Included in Plan?
	Commercial centers with buildings close to street edge with parking behind - Tempe Center is closer to street vs. Pueblo Anozira which is set a long distance from sidewalks.	Yes	No	No
	Where development is removed from street (and lack of trees) provide shade canopies at sidewalk.	No	No	Yes to help define character
	Programming in parks to be seasonal or variable (going to many different parks).	No	No	No
	Baseline/McClintock - storefront and landscape improvement	Yes	No	Yes, to streetscape
	Code enforcement - renting single family homes to too many individuals.	Yes	No	No
	More public restrooms in parks, always open and clean	Yes	No	Yes, noted
	Adaptive recreational children's playgrounds and all playgrounds with covers and benches	No	Yes to help define character	Yes
Tracy Gray				
	Landlords would get compliance cards as well as renters	Yes	No	No
	Be creative with community outreach	Yes	No	Yes
	Create greenbelt from Scottsdale to Chandler	No	No	No
Aaron Peterson				
	Moderately priced food but not fast food.	Yes	No	Yes
	More outdoor dining options that are pet friendly	No	No	No, not specific to pets
	Include solar in new buildings and redevelopment	Yes	No	No
	Address water conservation issues	No	No	Yes to encourage
	More desert landscaping. More water conservation. Less grass. Fewer flowers.	No	No	Yes to help define character
	Use collector streets, more bike friendly. Able to bike Tempe without going on main streets	Yes	No	Yes

Group Facilitator	New Comment (added)	Comment considered previously?	Modifies the List?	Included in Plan?
	Water (drinking) fountains along bike paths	Yes	No	Yes
	Keep speed on Rural and Baseline. No to 35 MPH.	Yes	No	No
	Bring back splash parks	No	No	No
	Don't overdevelop Kiwanis and diminish walking options	No	No	Yes to help define character
	Skate park at another location on Orbit route	Yes	No	As one option to examine, Yes
Nancy Woods				
	Shop local resources - Website?	Yes	No	No, but option available on City website
	Affordable housing - housing reflective of income affordability	No	Yes to help define character	Yes to help define character
	Mix of style, income, mixed-age. Don't just go for high end	No	Yes to help define character	Yes
	Traffic flow at schools at start and finish (Rover School on Watson)	No	No	No
	Enlarge the distribution of notice and more methods	Yes	No	No, but TIP Manual is addressing
	Where are all the people that aren't Caucasian and older?	Yes	No	Yes, try to reach all demographic groups
	Building permits to include bike racks	No	No	No, codes already require this.
	Speed limit enforcement would help greatly	No	Yes for safety	Yes

Group Facilitator	New Comment (added)	Comment considered previously?	Modifies the List?	Included in Plan?
Mark Vinson				
	Orbit very important for our older population - have disabilities and cannot walk far	Yes	Yes	Yes
	Keep buildings 3 stories or lower	No	No	No, some buildings are built and/or entitled to be taller than 3 stories
	Not interested in more apartments or big boxes kind of development, but Lake Country Village could be developed with movie theater, outdoor dining, library branch, fountain, splash pad, smaller stores, Verizon, Mervin's, Michael's, ice cream store, hobby shop (small one), Tai Chi, and Yoga.	Yes, similar	No	Yes to help define character
	Landscape Baseline with low landscaping plants. Clean it up, maintain wall especially south side of street	Yes	No	Yes to help define character
	Lakeshore Village - we need trees, walkways, park benches and a (drinking?) fountain.	No	No	No
	Visibility concern near intersections. Reconsider size of plants close to road blocks visibility for turning auto from main road. Some bushes and trees are too large to be planted close to road. Smaller plans should be used to improve visibility.	No	No	Current code establishes view triangle
Sherri Lesser				
	Police response time is very slow in this area	No	No	No, but issued shared with PD
	Dog park within character area	Yes	No	As one option to examine, Yes

Group Facilitator	New Comment (added)	Comment considered previously?	Modifies the List?	Included in Plan?
	Walkability connecting all parks together	Yes	No	Yes
Robert Yabes				
	House solar should NOT be required. It is expensive and should be individual choice.	No	No	As one option to examine, Yes
	Solar is not the only way to make a home more energy efficient - extra insulation is one example.	No	No	As one option to examine, Yes
	Library buildings preferred. A neighborhood "mini" library is not a city service and would create a dirty chaotic appearance. Need a building with employees.	No	No	Yes to help define character
	Concern - don't want a governmental HOA	Yes	No	No
	Big box retail is good - save gas, time + money.	No	No	No
	Neighborhood Watch ??? Need more.	Yes	No	No
Larry Schmalz				
	No new comments included			
Kelly Rafferty				
	Orbit from Optimist/Fuller to TPA (?)	No	No	Yes, to Orbit service
	Bus cutouts (pullouts) need to be examined and increased - very important	Yes	No	Yes
	Consider how to better utilize school/community facilities for recreation + civic use	Yes	No	Yes
Josh Roffler				
	The Canal District or Western Canal District should be the name for our area	No	No	No
	City program like Phoenix to put solar on modest single family homes.	No	No	No
	Make exception of multi-family housing for senior housing and affordable multi-generational housing	No	No	No
	New housing should be required to be really energy efficient or event net zero	No	No	Yes to concept, No to requirement

Group Facilitator	New Comment (added)	Comment considered previously?	Modifies the List?	Included in Plan?
	Orbit - connect to Park and Ride (location not specified) and Guadalupe/McClintock (commercial)	No	No	Yes, to Orbit
	Do something about Feral Cats.	No	No	No
	Make the walls look consistent.	Yes	No	Yes
	Add a tiny water turbine at the south water treatment plant	No	No	No
	Encourage shade a shopping center parking lots	Yes	No	Yes
	Shading sidewalks encourages people to walk	Yes	No	Yes
Laura Kajfez				
	People won't walk in summer	Yes	No	No
	Use desert materials	Yes	No	Yes
	Bus pullouts when there is new construction	Yes	No	As one option to examine, Yes
	Maintain water (drinking) fountains (in parks?)	No	No	No
Steve Abrahamson				
	Guadalupe/McClintock - safety measures for crossing high traffic corner	Yes for many corners	No	Yes, to concept of crossings
	Orbit in this area (Guadalupe/McClintock)	Yes	No	Yes
	3 to 5 stories for mixed use hub at Lake Country Village	No	No	Yes to help define character

KIWANIS/THE LAKES

Total Tally

PROJECT / ITEM	DESCRIPTION	Time Estimate	Cost Estimate	City-Controlled	City-Influenced	Relies on Others	OP Funded	Rooftop-Solar	Asset Management Plan	NOTES		
78	59 Housing Options	Don't over-develop with apartments [no more apartments]	☆☆		■	■	■		✓	Affected by legal preclusions against housing discrimination and land use rights.		
	8 Housing Options / Aging in Place	Small patio homes [for seniors to downsize and live independently]; and options for cottage or multi-generational housing	☆☆☆		■	■	■			HIPP program for SF enhancement; new housing responding to market; design guidelines for CA7		
	1 Density	If high residential density is approved, then it should lower traffic [i.e. senior living facility, where fewer persons drive]	☆☆		■					Affected by legal preclusions against housing discrimination and by entitled land use rights; The effort to minimize impacts of traffic is currently part of City review process		
70	60 Local Restaurants + Retail	Support expansion of local businesses and actively recruit business, restaurants + retail in areas to expand offerings to the area	☆☆		■	■		✓		Economic Development to market for businesses; tends to be market driven		
		Actively attract a mix of businesses that can create the activity levels / interesting destinations [like the Changing Hands / Wildflower / Trader Joe's]; want neighborhood-based retail shops	☆☆		■	■		✓		Economic Development to market for businesses; Option for Design Guidelines for CA7		
		Walking and bike-friendly businesses	☆		■	■	■	✓		Marketing for businesses; Bikeit program offers potential for wayfinding to local destinations		
		Ken McDonald Clubhouse could host a different food truck each Saturday, it might make the clubhouse café / restaurant a more appealing place	☆☆		■	■				For further action of City and CA8 to work with Golf Course vendor or YMCA nearby		
		Expand retail tenant mix for Marcos de Niza Plaza [Serrano's]	☆		■	■		✓		Work with commercial center owners; Economic Development to assist in attracting new businesses		
		Expand / reprogram retail center within The Lakes [south of The Watershed + Pier 54]; attract a bakery	☆☆		■	■		✓		Work with commercial center owners; Economic Development to assist in attracting new businesses		
		Desired goods and services include: high-end independent restaurants [to see local identify similar to Arcadia with Postino's, La Grand Orange]; outdoor restaurants highly encouraged; restaurants that offer fresh, healthy, local food, affordable prices; more locally owned restaurants / businesses; multi-cultural restaurants; movie theater; bird food store	☆☆			■	■		✓	Economic Development to market for businesses and work with commercial center owners		
55	6 Commercial Infill / Adaptive Reuse	Repurpose vacant / aging strip centers. Include options for commercial infill and adaptive reuse.	☆☆	\$\$\$		■	■			Commercial storefront program helps with "face lift" at commercial centers; Economic Development Further action to work with commercial property owners		
	10 Bike + Walkability / Shade + Connectivity	Tree-lined streets with shade trees along major arterial streets and better landscaping to define area; "Plant-a-Tree" program; ensure new development means more trees and greenery; provide shade plan for Kiwanis Park	☆☆☆	\$\$\$\$	■	■	■	✓		Tree and Shade program initiating; Tree donation program in place; Option of Design Guidelines for shade in CA7; Park Master Plan may need to be updated		
		Improvements to collector streets including increased shade along sidewalks and bike lanes	☆☆☆	\$\$\$\$	■			✓		See Proposed TMP Bike Boulevards (Bikeit) and Streetscape Improvements		
	8 Walkability / Connectivity	Pedestrian connections within and between developments [such as McClintock + Guadalupe] to foster connected "hub"; create more parking and street crossings at Guadalupe / McClintock to tie all four corners together	☆☆☆	\$\$\$\$	■	■	■	✓		Design guidelines for CA7; Community Development standards strengthened		
		Improve pedestrian-friendly connecting paths, with neighborhood access to + lighting along Western Canal	☆☆☆	\$\$\$\$	■	■	■	✓		Establish Canalscapes (design) Guidelines for canal areas; Collaborate with SRP on options to improve canal areas		
		Additional canal path landscaping and hardscape - soften canal experience	☆☆☆	\$\$\$\$	■	■	■	✓		Establish Canalscapes (design) Guidelines for canal areas; Collaborate with SRP on options to improve canal areas		
	4 Walkability / Bikeability	More protected or separated bike / walk routes on arterials in north-south direction	☆☆☆	\$\$\$\$	■	■	■	✓		See proposed TMP		
	4 Shade Amenities	Tree-lined streets; a "Plant-a-tree" program; ensure new development means more trees and greenery; provide shade plan for Kiwanis Park	☆☆	\$\$\$	■	■	■	✓	✓	Tree and shade program initiating; Tree donation program in place; Code compliance for commercial landscape plans		
	3 Site Design / Walkability	Not all buildings need to be right next to sidewalk	☆☆		■	■	■		✓	Option for design guidelines for CA7		
	3 Walkability / Connectivity / Canal Treatments	Continue separate bike paths [lighted and paved] to connect to Downtown Tempe	☆☆☆	\$\$\$\$	■			✓		See proposed TMP Paths and Bicycle Boulevards		
54	14 Kiwanis Park / Space Programming / Events	Use Kiwanis as entertainment space / more festivals; park area could be "upgraded" to allow for additional outdoor fields enable to market more effectively as host for sporting events; add dog park or dog water park; add skate park at Kiwanis	☆☆☆	\$\$\$\$	■			✓	✓	Park and Recreation Master Plan may need update; For further involvement of CA7 and City		
	15 Recreation + Community Gathering Spaces + Events	Improve Scudder Park	☆☆☆	\$\$\$	■	■		✓	✓	Scudder Park improvements (playground) for 2015-2016; See Asset Management Program		
	12 Neighborhood Destinations for Teens / Youth	Need activities and amenities for teens; longer city park hours; add skate park at: [one location] Gaicki, Kiwanis or Stroud Park	☆☆☆	\$\$\$	■			✓	✓	Park hours are a specific neighborhood issue and priority of neighborhood to address with City		
		Encourage use of parks [to replace kids playing in streets and in front of homes]	☆			■				Marketing park and recreational amenities within CA7;		
	5 Community / Event Spaces	Community meeting + gathering places; places for community to gather with room for music / arts / festivals	☆☆☆	\$\$\$\$	■			✓		Recreation/event programming; work with City to evaluate Kiwanis Park or Ken McDonald GC for improved event space		
46	2 Recreation Amenities	Consider how to better utilize community facilities for recreation-civic use										
		Optimist Park - basketball courts need lighting	☆☆	\$\$	■				✓	See Asset Management Program; Park Master Plan may need update to review plan for park		
		Neighborhood park in every one-mile block with playground for neighborhood meeting places	☆☆	\$\$\$	■				✓	Parks achieved for this area; See Asset Management Program for playgrounds updates		
	42 Mixed-Use Hub @ Lake Country Village	Something nicer for Baseline / Rural / Lakeshore: No fast food, title loans or pawn shops, or more big box retail	☆		■	■		✓		Local private property rights preclude restrictions on specific retail uses unless code text amendment or overlay is created to legally prohibit. Distance separation requirements might be one avenue for this. Options for Design Guidelines for CA7 to address redevelopment of mixed use sites		
41		Encourage business / growth within Baseline + Rural Growth Area	☆☆		■	■		✓		Community Development to work with current ownership to understand all stakeholders objectives. Economic Development to market for businesses and work with commercial center owners		
		At Baseline Rd + Lakeshore Dr develop as: attractive multi-level development with shops on bottom and housing on top; open space, walkable areas with trees / flowers and water features and place where people of all ages would want to go - theater, shops, etc.; make it a quality infill opportunity at Lake Country Village; Lake Country Village to serve as a new area hub within Baseline + Rural	☆☆		■	■		✓		Economic Development to market for businesses and work with commercial center owners; Design Guidelines for CA7 to address redevelopment of mixed use sites		
	17 Transportation + Streets	Orbit bus in South Tempe [connect to Downtown Tempe / Library and other key Tempe destinations]	☆☆	\$\$\$\$	■			✓		See Proposed TMP Bike Boulevards (Bikeit) and Streetscape improvements		
	9 Bus Amenities / Arterials	More bus pull-outs to improve vehicle traffic, when there is new construction.	☆☆	\$\$\$				✓		Further CA7 action as proposed TMP's transit and street projects are planned		
	9 Neighborhood Traffic / Circulation	Do not further impede traffic flow on major streets [it only pushes traffic to residential side streets]	☆☆		■	■			✓	See proposed TMP for multi-modal improvements; Traffic-calming in residential neighborhoods an option to discourage significant cut-through traffic		
31	2 Traffic / Noise	Residential speed humps where appropriate	☆☆		■	■		✓	✓	See proposed TMP for multi-modal improvements; Traffic-calming in residential neighborhoods an option to discourage significant cut-through traffic		
		Reduce speed limit to 35 mph along Baseline and Rural to help noise pollution	☆☆		■					See proposed TMP related to safety, intersection and potential for arterial improvements		
	1 Lighting	Identify and improve neighborhood street lighting where inadequate [i.e. along collector streets leading to schools and community facilities such as Aguilar Elementary]	☆☆☆	\$\$\$\$	■			✓		See proposed TMP		
	Shared center lane at Rural Rd. fork is a major problem	☆☆	\$\$\$\$	■			✓		See proposed TMP			
25	Community Involvement / Outreach	Community Involvement in development changes; i.e. need to understand what's happening at Lake County Village	☆		■					Tempe Involving the Public Manual - expanded options for community input into development		
		Expand diversity in Planning Meetings; ensure outreach of demographics community is represented	☆		■	■	■			Tempe Involving the Public Manual - expanded options for community input		
	3	Neighborhood Leadership Teams or Community Committees	☆		■	■		✓		New Tempe Involving the Public manual; Neighborhood Services interaction/communication; independent options such as the TNT group		
	3	Better assist neighbors to participate. Improve City communication to condos / townhomes.	☆	\$	■	■				New Tempe Involving the Public manual; Neighborhood Services interaction/communication; independent options such as the TNT group or neighborhood Facebook		
22	PROJECT / ITEM	DESCRIPTION	Time Estimate	Cost Estimate	City-Controlled	City-Influenced	Relies on Others	OP Funded	Rooftop-Solar	Asset Management Plan	NOTES	
	14	14 Maintenance + Code Enforcement	Need stronger code compliance effort: regulations for landlord to keep up landscaping of rental houses; and cite homes with overgrown yards	☆	\$\$	■		■				Code Compliance operations are expanding
			Public parks need care / routine maintenance [i.e. Optimist Park - basketball court area need trees trimmed]	☆		■				✓		Use Tempe 311 for Public Works maintenance requests
			Form "weed removal task groups" within street community; get us organized to help each other	☆	\$	■	■	■				Options for NA's and HOA's to beautify their neighborhoods
	14		Enforce noise ordinance against barking dogs. Do something about feral cats.	☆		■	■	■				Code Compliance operations are expanding; Use Tempe 311 for code violations
		11 Arterial Walls + Streetscape	Restore and refresh landscape and block walls on arterials; consider incentives for replacing walls to upgrade general appearance throughout neighborhood	☆☆☆	\$\$\$\$	■	■	■	✓		✓	See Asset Management Plan; Street Rights-of-Way are being evaluated city-wide. Further CA7 and City involvement. Option for Design Guidelines for CA7 to address walls (as repaired/replaced)
		{1}	Identifiable theme for the major arterial intersections [could include color of street signs, lighting color or character, gateway monument, signage, etc.]	☆☆	\$\$	■		■	✓			Design guidelines for CA7; Implemented by CIP and through development activity
			Walls to look consistent (not piecemeal)									
	9		Target exterior wall treatment along Rural, McClintock, Baseline and Guadalupe Roads									
		9 Educational Partnerships	Create joint-use / shared-use agreements to use schools in area districts for public meetings and activities;	☆☆	\$\$\$	■	■	■	✓			For further action by CA7, City and School District
		Consider how to better utilize schools for recreation-civic use										
		Partner to utilize school signs for neighborhood activities and community workshops										
15		8 Environment + Sustainability / Energy Savings	Bring solar panels to parks, grocery stores, and utilities;	☆☆	\$\$\$		■	■				City / Utility providers to provide energy efficiency outreach with residents/businesses
		Identify local industrial-retail business that sell and installs rooftop solar on homes and small businesses										
		Encourage existing homes to be more energy efficient [i.e. insulation, windows, doors, caulking]										
		New housing to be energy efficient										
		Address water conservation. Give priority to desert landscaping										
7	17 Neighborhood Character	Support small neighborhoods with character!	☆☆	\$\$	■	■	■				Neighborhood Services - continue communication efforts between neighborhoods and City; Publicize neighborhood grants program	
	3	2 Library Access / Services	Consider vacant free-standing building [i.e. Arby's on Guadalupe / Rural Rd] to use as a library tech. branch	☆☆☆	\$\$\$	■			✓		Further action by City and CA7 to evaluate/plan for library access/library space	
		Neighborhood "mini" library in front yards [take a book / leave a book]	☆☆		■						New concept - further action by City and CA7; consider along with other suggestions for library access/library space in CA7	

KIWANIS / THE LAKES	COMMENT CARDS + EMAILS
DATE: Kick-Off Meeting February 26, 2014	
Jean Copple	<p>Here are a few thoughts about things that I think would benefit residents of my Lakes neighborhood and others in the area.</p> <ol style="list-style-type: none"> 1. Orbit route shown on reverse map. It would give us easy access to nearby commercial/retail intersections, the library complex and existing metro bus routes. 2. Return some of the retail shops we've lost in the Lakeshore Village . A neighborhood meeting & gathering center there would be welcome as a place to shop and stroll. <p>Out of your area but close: 3. Explain the possibility of having some company develop a senior residence/care facility on the NW corner of Rural and Warner. Many of us who are currently living in our homes will be needing a place to live when independent living is not longer an option. I think the ones we already have are not going to be enough to meet the needs of the future.</p> <ol style="list-style-type: none"> 4. Better enforcement of rental property rules regarding landscape problems. 5. I applaud the City's actions being taken to restore and refresh easements and keep block walls on the major arterials. Keep it going!!! Would it be possible to paint as work progresses on? It seems painting waits until the entire section or completely refurbished, which usually takes some time.
Kelley Teters	<p>Can we create a Facebook page for the character areas? That way people can be the most updated information in one place and can leave comments and feedback.</p>
Jill Reeves	<p>If you do a mini-neighborhood leadership teams like the lady in the meeting suggested, please count me in. Please look into adding more libraries, especially in the abandoned buildings.</p> <p>Can someone please contact us to update us on the El Paso bike path. We were concerned with our entry way to our RV gate, it didn't change from the last draft and isn't working for us.</p> <p>More lighting in our neighborhood in the front yards areas (going down Palm to Sesame St leading to Aguilar Elementary)</p> <p>Can you come up with some landscape ideas along Rural and McClintock from Baseline to Elliot? Like the one gentleman in the beginning suggested.</p> <p>The lakes have great entrances. We would like to see some character landscaping at our neighborhood entrances too. Particularly at Watson and Rural.</p>

Kiwanis/The Lakes Character Area Plan
 Comment Cards and Emails

KIWANIS / THE LAKES	COMMENT CARDS + EMAILS
Debra Hudson	It would be nice to have available areas for our youth to hang out. Skate parks, indoor areas that are safe and also educational. We have many parts available for younger children; we have forgotten about our youth ages 14-18
Maureen Schmid	<p>Orbit stop at Baseline More trees and shade in parks</p> <p>If more bike paths, etc. a program to educate bikers on safe biking, maybe citations for dangerous behavior. Long term, ensure upkeep on aging homes in the area, including landscaping. Our area today isn't very walkable, except for sidewalks. Mall density seems to be in the "works" for our area, keep it upscale if possible. Repurpose vacant strip malls, and could general gathering. Walking areas be woven in there? Maintain code for weedy properties/ dead trees etc. Would love a small art film movie theater Agree - redevelop for charm and warmth, not vast, cold development</p> <p>Bring the Kiss Stars Art/music education venue in north Phoenix here to help raise funds for this second site</p>
Connie Emminger	<p>Orbit bus needed in area Inclusive of all living areas, townhomes, condos, single family Short term and long term goals, Lakeshore and Baseline property upkeep, stricter rules for landlords to care for homes</p>
Linda Artac	<p>Orbit bus service Traffic light at Lakeshore and Rural by new Starbucks Safety (?) issues due to new apartment development in big lots area concerned when apartments are rented well have so many trespassers in the lakes, fishing etc. KEEP Wendy's in the Lakeshore area and bring in smaller retail vs big box stores Small retail in Lakeshore/Baseline mall (ice cream, bakery, consignment)</p>

Kiwanis/The Lakes Character Area Plan
 Comment Cards and Emails

KIWANIS / THE LAKES	COMMENT CARDS + EMAILS
Benjamin Teters	The City of Los Angeles just completed phase one of a small but big project. It did take them seven years. They replaces all of or most of their street lights with LED bulbs. It has reduced their energy consumption by 60% and carbon emissions reduced by nearly 50,000 metric tons per year. that is like taking 10,000 cars off the road.
Karen White	Temps is wonderful. I would like to see more pet friendly venues. The parks are wonderful, but the weeds are so bad I stopped taking my dog to them. A water area for dogs (like Gilbert has) might be a good addition for the Kiwanis park (which already is a water identified park)
	More walkable shopping, small and independent shops and restaurants
Diana Ciolck	Owners of property need to take care of all rental front yards NOT the renters Also the weeds need to be kept below 6 inches
Cynthia Rusir	input in Four corners of Guadalupe and (No Suggestions), we want to strengthen walking, biking, and accessibility to the area
Robin Phillips	<p>Condo/townhomes do NOT get water bills, so do not get communication from the City. Need to find another way to send out to them.</p> <p>Need better microphone - could not hear facilitator. Print out the PowerPoint to follow along better, especially since could I not hear.</p> <p>Person who delivered door hangers for meeting did not put on all doors in our neighborhood - Bradley Manor. The idea of moving the meetings around character areas was an excellent idea. The woman who suggested it was not respected by the facilitator, whoever she was because we could not hear her.</p> <p>Need to breakdown demographics by type: apartments, condo/townhomes, single family. There is a difference - especially density.</p> <p>Do demographics include the 3 senior living facilities in this area?</p> <p>Need to print out (can be black &white) PowerPoint to follow along better especially since could not hear. Orbit bus survey should be by mail/internet, NOT by phone.</p>

KIWANIS / THE LAKES	COMMENT CARDS + EMAILS
Comments Received After 2/26/2014	
Susan Niernberg	<p>This is sort of exciting to have an opportunity to help shape the future of Tempe's neighborhoods. I live in The Lakes, a little known secret to the rest of Phoenix. We are close to the major highway systems, have this wonderful oasis closed off from the world, and close to amenities.</p> <p>One question...why has the "Kierland Commons" like outdoor mall with coffee shops, retail and condos gone away. (the one proposed for Baseline and Lakeshore). Wouldn't this help bring a little more UPSCALE to Tempe. The wonderful outdoor outlet mall that opened off Maricopa Rd in Wild Horse Pass area is busy, and wonderful. Having this, smaller scale with a restaurant or two, and tow homes or condos would bring quite a zest and draw to Tempe. Please don't bring in more cheap apartments or condos. We have plenty of these nearby and the crime continues to go up. This location is so ideal.....close to everything....etc. It would be great for Tempe to be known for something that accents the university and that has a flavor all it's own. Right now we are just a town south of Scottsdale.</p> <p>I am currently working in The Lakes to set up a "neighborhood ambassador/watch" program on every street. We have 1200 households and learning to be a good neighbor, not just for safety, but fun too, is a skill and benefit we should all enjoy. I strongly believe in bringing back character and life to our neighborhoods!</p>
David Rice (Comment from Corona /South Tempe but applies also to Kiwanis/The Lakes)	<p>-consider seeing if the Ken MacDonald clubhouse will host a different food truck each Saturday. It might make the clubhouse cafe/restaurant a more appealing place to stop when biking/walking along the canal.</p> <p>-consider hosting a food truck "food court" at the Kiwanis sister city ramadas once a month.</p>
Comments Received After 6/2/2014	
Marilyn Dantico	<p>After receiving a written notice, I went on-line and it appears that the "Optimist Park" area is included in the "Kiwanis/The Lakes" character area. My neighbors disagree – claiming that since the "optimist park" area is larger than either of the other two, it would surely be mentioned in the name, if it were included in the "plan". Can you settle this issue for us; is the area bounded by McClintock and the 101 and Baseline and Guadalupe included in the Kiwanis/Lakes Character area?</p>
Bill+ Mary Jurica	Standardize residential fence heights and color boarding Rural from South of I-60 freeway-Elliott.

Kiwanis/The Lakes Character Area Plan
 Comment Cards and Emails

KIWANIS / THE LAKES	COMMENT CARDS + EMAILS
Lorena Chavez	Good afternoon. I was wondering why there is not some sort of traffic signal at Guadalupe Road and the Western Canal crosswalk. Something similar to the signals at the canal and Rural Rd would be beneficial. It would not only help those running and biking cross the road safely, but also make drivers aware of people crossing the road.
Jack Jerhill	I was unable to attend the June 2, 2014 meeting. My suggestions. Outdated infrastructure needs to be current such as neighborhood street lighting is 35 years old. Some areas are not well lit. The streets need to be resurfaced the local utility companies who modernized our public works. Hired second party or sub-contractors to do the work. They left an eyesore. I thought the Aguilar school neighborhood is supposed to be a drug free zone. For the past couple years its been known that the house on 249 E. Sesame St. is a drug house. Local law enforcement is aware of it. The owner who is leasing or renting to these criminals needs to be put on notice. This house is located around the corner east of the school and arrests have been made in the past recently.
Comments Received After 6/26/2014	
Lolly Boyle	Do demographics include the 3 senior living facilities in this area?
Marilyn Dantico	What is the point of the character areas? Are they for example to inform or direct the D.R. B. ?
	When the product is created (and what is the product) what is its purpose? To direct the CIP?
	If this product will have a policy impact - why aren't serious data collection efforts being undertaken?
	More trees would be wonderful
	A serious effort to improve air quality would be great.
No Name	Regular outreach would be great
	Let's not go form over function. Please no "it looks good" pretty signs will make it an improvement. Do not cut down trees to make the area "look new". Repair, Maintain and improve Roads, Sidewalks and Common Areas Promote Independent Businesses Demote Shopping Malls and Chains Do not put in multiple strip mall with totally empty spec building or duplicates of existing chains like duplicate shopping malls More conventions are not important

KIWANIS / THE LAKES	COMMENT CARDS + EMAILS
No Name (cont.)	<p>Hold rental owners accountable for property maintenance and tenant behavior (noise, moss, animals, parties). Perhaps curb the number of rentals permitted. Please weed and feed the parks Do Not remove street - against "traffic calming" Limit or Ban Political Signs + calls all over</p> <p>Get the input -- put in a "check the box" survey and send it to every house in the area with a voting option with stamped return so you get input from most people- So Important. People get what is going on.</p>
Craig Clifford	<p>What purpose (beneficial citizen outcome) does the 'public planning process for Tempe Character Areas' have? It seems to me that neighborhood character is most commonly determined by the originating general plan and original builder via lot size, location, and style . . . rather than some arbitrary compilation of multiple neighborhoods of varying style and demographics - years or decades after original development. There is little similarity between the area in which we live and 'The Lakes' and 'The Kiwanis' area, which your proposed Character Area seeks to combine. If there is no discernible positive outcome to be achieved from this process aimed at the citizens and businesses it seems the process only serves as 'make-work' for staff and stroking of political egos. - I would appreciate one thing of you and/or your staff: When you are out in the "Character Areas" (we call them neighborhoods) enjoying the sunshine and fresh air while passing out your meeting flyers - Please pay attention (read and obey) residential signage like ours "No Soliciting" and refrain from posting your propaganda on our front door/gate. We spend time away from our home in Tempe and do not wish to call attention to criminals that there is nobody home to retrieve the desiderata and exposing that our home is open season for property crime - something that the Tempe Police have been woefully inadequate at preventing or solving per our own unfortunate incidents...</p>

Kiwanis/The Lakes Character Area Plan
 Comment Cards and Emails

KIWANIS / THE LAKES	COMMENT CARDS + EMAILS
Craig Clifford	<p>What purpose (beneficial citizen outcome) does the 'public planning process for Tempe Character Areas' have? It seems to me that neighborhood character is most commonly determined by the originating general plan and original builder via lot size, location, and style . . . rather than some arbitrary compilation of multiple neighborhoods of varying style and demographics - years or decades after original development. There is little similarity between the area in which we live and 'The Lakes" and 'The Kiwanis' area, which your proposed Character Area seeks to combine. If there is no discernible positive outcome to be achieved from this process aimed at the citizens and businesses it seems the process only serves as 'make-work' for staff and stroking of political egos.</p>
Michelle White	<p>I finished the survey, and as I did, I realized I'd love to see our neighborhood have distinctive signage, bus stops, public areas and directional signage, etc. with a neighborhood look. If we do anything along those lines and there is a smaller community committee participating, I'd love to be part of that. I've been a graphic designer for many years and think I'd be helpful with this type of thing. Thanks for all your work for our neighborhoods.</p>
Charlotte Thomas	<p>35 minutes to complete?? Have you considered that such a time commitment will affect the number and type of comments? I don't want to start the survey and then not be able to pause, exit and return to where I left. That option is not stated in your cover note, if it is an option. Once again, the city is asking people to come to it, not the city actually coming out to communities. What about presentations to HOAs, neighborhoods, setting up something at grocery stores? Responses from such settings may be harder to put into your boxes, but you'd get much more involvement and buy-in.</p>
Nancy Lesko	<p>Very interesting article that basically encapsulates what the City is proposing in the June 19-25 issue of Phoenix New Times. After reading the author's interpretation of what the City's vision is, I "get it" more, as really, some of what most of us oppose (mainly the high density housing and all that it brings) is inevitable and we might as well make it happen in a way that serves us best: e.g. high end condos, multi-level senior housing, or attached 2-story villas perhaps, rather than high-rise rental apartments as seems to be what all developers are building, and eliminate what seems to be the developers' vision: that all of Tempe revolves around ASU students. We already have learned, several times I think, that even the downtown can't survive if all the businesses are geared towards students 18-28 year old. Anyway, I look forward to seeing what the survey (below) proposes.</p>

Kiwanis/The Lakes Character Area Plan
 Comment Cards and Emails

KIWANIS / THE LAKES	COMMENT CARDS + EMAILS
Charlotte Thomas	A significant number of owners in The Cottonwoods leave for the summer so some of the people who could be interested aren't here. People in this corner of the planning area don't feel very connected to the Aguilar area. How was notice given of the June 26 meeting at the First Baptist Church? The church is not in an area that people on the southeast corner including Round Valley would feel connected to. The church may be seen as on the east side but is several miles north and west of this corner. I wonder how many people drive past there on errands.
Connie Emminger	Nancy did well but I think she should have told what happened in previous meetings, did the activities and then asked for questions at the end. Anyone who said they haven't heard about the meetings wasn't paying attention!!
Comments Received After 8/23/2014	
Edward J. Foley	I'm sorry to be so late in supplying my comments to the plan presentation of October 21, 2014 but I have been out of town. I agree with most of the planned changes but have one item that I feel very concerned about since it pertains to my neighborhood. I feel that the planned character area has three significant zones of interest which establishes its uniqueness; Kiwanis Lake, the Lakes and Lake Country Village. The first two items have been have been well addressed, my concern is the Lake Country Village. I agree with Mark Vinson's Comment regarding this area on the Priorities + Strategies Workshop worksheet. I don't agree with a large apartment complex at that location. If this area is developed with a number of small enterprises it must have a multi-use facility to insure the property and surrounding businesses will be properly utilized. The facility must provide attendance for both daytime and evening events. My suggestion is that a public auditorium owned by the city be considered which could be used for a myriad of small events such as: Seminars; Lectures; ASU overflow meetings and lectures; Town meetings; Medical conferences; Plays; Musical events; Movies; and Stockholder meetings. I realize that this idea will be in conflict with Gammage and Tempe Center for the Arts but it would be primarily intended for smaller events.
Michelle White	This is a very awkward format. At 33" x 17", no one could download and print it and have it in any readable format. I'm having a difficult time trying to read it on screen. I understand it is a "poster" format for display purposes, but that is not functional for neighborhood users. We need it in 8 1/2" x 11" format. I hate to be a squeaky wheel, but I believe your purpose in posting it here is for us to read it. Maybe you can split the map on two pages so it is large enough to read.

Kiwanis/The Lakes Character Area Plan
 Comment Cards and Emails

KIWANIS / THE LAKES	COMMENT CARDS + EMAILS
Sue Roswurm	<p>I was unable to attend the meeting at Fuller School yesterday evening, but I wanted to add a few comments. I was happy to hear that the block wall on the Baseline Road south-side of our neighborhood is scheduled to get some attention. The home owners who live along Baseline have independently raised the wall and applied different paint colors making it an eyesore. That area is in dire need of some new landscaping also. The one thing I do not see in any of the materials, is the graffiti paint-overs. I am happy that the city responds quickly to cover up graffiti, however sometimes the cover up is worse. For example the block wall on the north side of E Baseline and S River has a tan wall where the graffiti was covered with purple paint. I see the ugly splotch of purple every time I drive our of our neighborhood. Is there anything that can be done about this?</p>
Comments Received After 10/22/2014	
Bob & Patty O'Brien	<p>Wow! You have done an awesome amount of work on this. Thank you for all your efforts. And thank you for asking the opinions of us, the current residents.</p>

Kiwanis/The Lakes - Student Observations

<u>Name</u>	<u>Favorite Aspect</u>	<u>Suggested Improvements</u>	<u>Changes</u>	<u>Comments</u>
Sophia Neria	Welcoming and convenient	Dog waste bags Adding bike lanes Plant fresh grass on sidewalks	Small business tax-breaks Repaving roads Expanding shuttle service	
Devina Fernandez	Kiwanis Park	Adding water fountains Adding resting areas	Coverings over playgrounds Clean lake water Trash pick-up	
Aubrianna Stroop	Scudder Park	Trash clean-up at Scudder Park Provide a restroom Add more benches and water fountains	Volunteer trash pick-up groups Shade trees Updated playground equipment	
Haley Strauss	Fuller and Optimist Park	Cover up graffiti Replace bad patches of grass Add bathrooms	Add lights for long time security Less allergenic grass seed Bathrooms	
Hector Beltran	Basketball	Basketball court improvements Resurfacing and new equipment	Regulation size court and hoop Admission charge at rec. center	
Carlan Naisant	Kiwanis Park and the Lake	Graffiti Curbside street addresses Street cleanliness	Fixing sidewalks Fix playground equipment	Parents said, "I like the park and lake and the way they are kept clean."
Michael McCoy		Sidewalk maintenance issues Street poles along Carson (signs fall off) Mosquito issue	Consult homeowners HOA Clean overall streets Monthly mosquito "gas"	

Kiwanis/The Lakes - Student Observations

<u>Name</u>	<u>Favorite Aspect</u>	<u>Suggested Improvements</u>	<u>Changes</u>	<u>Comments</u>
Rushini Randeniya	Family-friendly environment	Graffiti Rusty playground equip. at Scudder Park	Security around parks More homeless shelters	
Spencer Nelson		Rough streets Uneven pavement	Fix potholes Fix pavement issues	
Ken Loi	Most basic needs are provided	Street cleaning Less motorboats in the Lakes	Playground repair	Friend likes the variety of places to visit but cleanliness is poor.
Sabrina Cervantes	Kiwanis Park	Cleaning up eating areas after weekends Animal rules more transparent throughout park Smell of lake is terrible	Add drink stands throughout Kiwanis Park	
Melahni Washington	Kiwanis Park	Updating playground equipment Basketball hoop improvements	Planting more trees More bike lanes	
Tyra Schmidt		Kiwanis Park cleanliness More trash cans	Fixing roads Paint buildings that are needed	
Eliana Dalton	Kiwanis Park	Adding recycle bins and trash cans Lake needs cleaning	Safety concerns Police bike patrols Bulletin for upcoming events	
Ashley Gibson		Trash cans and recycling bins on sidewalks	Shade trees over sidewalks	

Kiwanis/The Lakes - Student Observations

<u>Name</u>	<u>Favorite Aspect</u>	<u>Suggested Improvements</u>	<u>Changes</u>	<u>Comments</u>
		Fixing potholes cracks in sidewalks Add drinking fountains		
Rogelio Arrieta	Kiwanis Park Softball/Baseball Fields	Re-sod the grass - makes it difficult to play on Fix dugouts Add more baseball fields instead of softball fields		
Abby Clarke	Kiwanis Park	Install bird feeders	Small library in Kiwanis (include wildlife info)	
Elizabeth Bejarano		Add recycle bins next to every trash can	Add new library for students	
Sophia Ybarra	Kiwanis Park	Clean the park	Filter out bad water from lake	
Lexi Dodd		"Beautify" team to clean park	Add rails by lake so people don't trip and fall in	
Juliet Farr		Water parks and fields more often	Sponsored dog runs	
Evelyn Salgado		Plant trees and plants at Kiwanis	Fencing around the Lake	
Gerardo Hernandez		Clean Kiwanis Park lake	Clean benches, tables, and playground	
Ashley Thatcher			Railing along the side of lakes Boat rentals in the lakes	
Gage Garcia			Build tennis court	

Kiwanis/The Lakes - Student Observations

<u>Name</u>	<u>Favorite Aspect</u>	<u>Suggested Improvements</u>	<u>Changes</u>	<u>Comments</u>
Brittany Marquez		Clean lakes Clean Kiwanis Park		
Victoria Anderson		Plant trees in alley ways	Drive in movie theatre	
Carynelle Espada		Plant trees all around empty spaces	Better bathrooms with stall doors	
Callahan Farr	The Lakes area	Promote garage sales Hire paperboys for summer jobs Parking in front of residents' houses	Clean trash from the Lake Clean public docks Lower boat-renting prices	
Carlie Liko	The Lakes and Kiwanis Park	Kiwanis Park field improvements Plant grass	Lack of restroom stall doors Outdoor stage in Kiwanis Park	
Anthony Perkins	Bike rentals at Kiwanis Park, streams by The Lakes and Kiwanis Wave Pool	Doors on the bathrooms	Raised boardwalk around Lake to prevent overflow from Monsoons	
Cindy Gutierrez	Bike access to coffee shops, schools and the park	Doors on the bathrooms at Kiwanis Park More canopies for shade Better bike access along streets	Lowering rent price on fields Add skate-park	
Julia Reddie	Kiwanis Park	Plant more trees Shade ramadas throughout park	Using flood irrigation to improve grass Better areas for parents to sit	

Kiwanis/The Lakes - Student Observations

<u>Name</u>	<u>Favorite Aspect</u>	<u>Suggested Improvements</u>	<u>Changes</u>	<u>Comments</u>
Diana Gomez	Kiwanis Park area	Cleaner bathrooms + doors to stalls	Add skate park Classes offering to teach skateboarding	
Megan Norrish	The Lakes area	Stall doors on bathrooms in Kiwanis Park More cold water fountains	Outdoor stage at Kiwanis Park for public use and movies	
Edvin Mulac	Accessibility	Stall doors on bathrooms in Kiwanis Park Add bird feeders, distraction from birds to people	Installing bike racks in front of schools More bike paths	
Miguel Lopez		Stall doors on bathrooms in Kiwanis Park Refilling soap in bathrooms	More shade to promote bus ridership More seating for bus stops	
Mykaila Starkie	Fuller Elementary and Optimist Park	Install drink and food stand New swings at Optimist Park	Installing restroom in Optimist Park Installing bike racks in Optimist Park	
Maureen Juarez	Kiwanis Park	Upkeep on restrooms (soap dispensers) Re-seeding grass on softball/baseball fields Lowering rent rates of fields	Open batting cages earlier on weekdays Replace old pitching machines Pave bike path behind canal	
Taylor Delgado	Kiwanis Park	Install doors on bathrooms in Kiwanis Park Refill soap dispensers	New batting cage machines Add more vending machines	

Kiwanis/The Lakes - Student Observations

<u>Name</u>	<u>Favorite Aspect</u>	<u>Suggested Improvements</u>	<u>Changes</u>	<u>Comments</u>
		Install shade pavilions throughout park	Adding Wi-Fi to the park	
		Lower cost of field rental		
Erica Miranda	Kiwanis Park	Add soap and paper towels to restrooms	Add doors and lights to public restrooms	
Reyna Tavena		Installing restroom doors at Kiwanis Park	Add more water fountains	
		Add recycling bins next to restrooms		
Rose A. Hercel		Kiwanis bathroom soap Add bathroom stall doors	Add dog park at Kiwanis Park	
Jordyn Bursh	Clean parks with small amounts of litter	Add soap to Kiwanis Park bathrooms Installing lighting in Kiwanis Park restrooms	Add stall doors in the bathroom at Kiwanis	
Stephanie Mandujano	Kiwanis Park	Add doors to Kiwanis Park restrooms	Add more playgrounds and expanding space Designated water playground for babies	
Collin Wood	The Lakes and Kiwanis Park	Build skate park Provide more shaded areas	Parks and Schools water fountain cooling system replacement	
Jacob Baket		Add more parks or greenbelts	Designating more bike trails	

Kiwanis/The Lakes - Student Observations

<u>Name</u>	<u>Favorite Aspect</u>	<u>Suggested Improvements</u>	<u>Changes</u>	<u>Comments</u>
		Add security cameras on streetlights		
		Adding better water fountains around the park		
Jessica Balwinski	The Lakes and Kiwanis Park	Volunteers pick up garbage	Adding shaded areas for parents	
		Irrigation for watering grass	Rubber ground on playgrounds	
Stacy Gracida	Kiwanis Park	Cut grass shorter at Kiwanis Park	Add vending machines	
Cole Fiscus	The Lakes	More parties and get-togethers	Kids allowed upstairs in the club house	
		Add drinking fountains at The Lakes		
Nathan Andrews	The Lakes	Cleaner bathrooms; no stall doors	New playground equipment	
Talia Rodriguez	Kiwanis Park and Accessibility	Install stall doors at Kiwanis Park	Lowering costs for field rentals	
		Clean and repaint graffiti		
Salma Reyes	Kiwanis Park	Adding restroom stall doors Adding more canopies to playgrounds and areas	Installing more nature-based paths for bicycles, pedestrians, etc.	
Alex Ruby	Tempe accessibility	Adding restroom stall doors	Add more shaded area and bike areas	
Yesenia Escareno		Adding restroom stall doors Adding lights to restrooms	Shade ramadas	

Kiwanis/The Lakes - Student Observations

<u>Name</u>	<u>Favorite Aspect</u>	<u>Suggested Improvements</u>	<u>Changes</u>	<u>Comments</u>
Alec Lindgren	Kiwanis Park	Build skate park Install shade canopies Lowering renting costs of fields	Add parkour course <i>Parkour: the activity or sport of moving rapidly through an area, typically in an urban environment, negotiating obstacles by running, jumping, and climbing.</i>	
Ariadna Hernandez	Kiwanis Park and The Lakes	Volunteers to clean-up Kiwanis and The Lakes	Add a skate park	
Erika Ortega	Able to walk dog	Lower cost of renting fields/Install Wi-Fi hotspot	Brighter lights around The Lakes Get rid of dry grass	
Zach Famojo	The Lakes	Pick up more trash and garbage Increase maintenance of the fields	Skate park Local waterpark	
Rochelle Cardenas	Kiwanis Park area	Remove sand from park	Install mini-train around park	
Galilea Arreola	Walk freely through Tempe	Add bathroom stalls Add soap to restrooms	Skate park Add a senior room for elderly people	
Daniella Peinado		Add soap to restrooms Fill holes in the ground in the playground	Add doors to stalls on bathrooms	
Khristina Lipton	Kiwanis Park	Add arcade to Kiwanis Park	Build more hilly park	
Diego Dominguez	People of the City	Clean parks and rocks	Skate park	

Kiwanis/The Lakes - Student Observations

<u>Name</u>	<u>Favorite Aspect</u>	<u>Suggested Improvements</u>	<u>Changes</u>	<u>Comments</u>
Zachary Hernandez	Tempe in general	Install restroom doors Canopies for shade Dog park	Upgrade baseball machines at the Park	
Jade Heaton	Tempe	Doors on stalls in bathrooms at Kiwanis Park	Have more family oriented events	
Britney Nunez-Figueroa		Refill soaps in restrooms	Doors to the restrooms	
McKenna Chavez	Tempe	Installing doors to public restrooms	Installing more bike racks and bike paths	
Kayla Tran	Kiwanis Park	Refill soaps in restrooms Install lights in the restrooms Provide more shade for playground	Add restroom stall doors at Kiwanis Park	
Elizabeth Samaniego	Tempe and Public parks	Add lights to Kiwanis Restrooms Add stall doors to bathrooms		
Jose Andrade	Kiwanis Park	Purify the lake water Add trash cans	Plant more trees Make buildings more eco-friendly Add more electric car outlets for better environment	

Kiwanis/The Lakes Draft Character Area Plan

What do you think of the Kiwanis/The Lakes Draft Character Area Plan?

All On Forum Responses sorted chronologically

As of November 4, 2014, 3:09 PM



As with any public comment process, participation in Tempe Forum is voluntary. The responses in this record are not necessarily representative of the whole population, nor do they reflect the opinions of any government agency or elected officials.

Kiwanis/The Lakes Draft Character Area Plan

What do you think of the Kiwanis/The Lakes Draft Character Area Plan?

As of November 4, 2014, 3:09 PM, this forum had:

Attendees:	35
On Forum Responses:	4
All Responses:	6
Minutes of Public Comment:	18

This topic started on October 17, 2014, 3:28 PM.

Kiwanis/The Lakes Draft Character Area Plan

What do you think of the Kiwanis/The Lakes Draft Character Area Plan?

Responses

Which character area meetings did you attend for the Kiwanis/The Lakes area?

		%	Count
August 27		25.0%	1
October 23		75.0%	3
None		25.0%	1

On the following scale, how do you rate the Draft Kiwanis/The Lakes Character Area Plan as reflecting the character of Kiwanis/The Lakes with 0 being extremely dissatisfied and 10 extremely satisfied?

		%	Count
7		75.0%	3
8		25.0%	1

What is the primary reason for the score you gave?

Answered 4

Skipped 0

emphasis homes **need** plan rentals **very**

What is the most important improvement that would make you rate this Plan closer to a score of 10?

Answered 4

Skipped 0

landscaping **park** replace visual **walls** within

On the following scale, how do you rate the Draft Kiwanis/The Lakes Character Area Plan as capturing the important issues and projects for Kiwanis/The Lakes with 0 being extremely dissatisfied and 10 being extremely satisfied?

Kiwanis/The Lakes Draft Character Area Plan

What do you think of the Kiwanis/The Lakes Draft Character Area Plan?

		%	Count
7		25.0%	1
8		50.0%	2
9		25.0%	1

What is the primary reason for the score you gave?

Answered 4

Skipped 0

improving **more** neighborhood plan **walkability**

What is the most important improvement that would make you rate this Plan closer to a score of 10?

Answered 4

Skipped 0

more needs neighborhood **rental units**

On the following scale, how do you rate the public process for gathering input into the Draft Kiwanis/The Lakes Character Area Plan for Kiwanis/The Lakes with 0 being extremely dissatisfied and 10 being extremely satisfied?

		%	Count
0		25.0%	1
5		25.0%	1
8		25.0%	1
10		25.0%	1

What is the primary reason for the score you gave?

Answered 4

Kiwanis/The Lakes Draft Character Area Plan

What do you think of the Kiwanis/The Lakes Draft Character Area Plan?

Skipped 0

area did feedback felt from input live meeting neighborhood **notices** opportunities **optimist park**
t they was

What is the most important improvement that would make you rate this Plan closer to a score of 10?

Answered 4

Skipped 0

optimist park process

Additional Comments

Answered 3

Skipped 1

he more

J. Gomez more than 2 miles

October 30, 2014, 7:16 PM

Which character area meetings did you attend for the Kiwanis/The Lakes area?

October 23

On the following scale, how do you rate the Draft Kiwanis/The Lakes Character Area Plan as reflecting the character of Kiwanis/The Lakes with 0 being extremely dissatisfied and 10 extremely satisfied?

7

What is the primary reason for the score you gave?

There are two items in this character plan I would not like to see in my neighborhood. First, I don't think we have enough landmarks to justify the funds for "wayfinding signage". Second, I dislike the idea of the "Orbit" and feel the cons outweigh the pros. Adding more public transportation will increase the rentals, which we currently have plenty of issues with.

What is the most important improvement that would make you rate this Plan closer to a score of 10?

This neighborhood needs a visual facelift, replace outdated public areas and replace overgrown/non-existent landscaping along major streets. We need visual unity with walls, sidewalks and landscaping.

On the following scale, how do you rate the Draft Kiwanis/The Lakes Character Area Plan as capturing

Kiwanis/The Lakes Draft Character Area Plan

What do you think of the Kiwanis/The Lakes Draft Character Area Plan?

the important issues and projects for Kiwanis/The Lakes with 0 being extremely dissatisfied and 10 being extremely satisfied?

7

What is the primary reason for the score you gave?

I support improving the walkability and bikeability of this neighborhood. Many issues are addressed, however property owners should also be held accountable for their part on improving the neighborhood.

What is the most important improvement that would make you rate this Plan closer to a score of 10?

It is important that these improvements are maintained for years to come. This neighborhood need enforcement for long term results.

On the following scale, how do you rate the public process for gathering input into the Draft Kiwanis/The Lakes Character Area Plan for Kiwanis/The Lakes with 0 being extremely dissatisfied and 10 being extremely satisfied?

5

What is the primary reason for the score you gave?

Information was limited, notices haven't reached many neighbors and therefore little feedback is provided from the people who live in this neighborhood. Seems like the city doesn't quite want our feedback.

What is the most important improvement that would make you rate this Plan closer to a score of 10?

Too late in process to improve this process.

Additional Comments

I'm supportive of aesthetic and functional improvements, such as landscaping, sidewalks, bike paths, outdoor patio restaurants and social gathering spots. Not interested in having art sculptures throughout neighborhood or attracting low income/government assisted households by adding more public transportation and allowing more rentals.

Kiwanis/The Lakes Draft Character Area Plan

What do you think of the Kiwanis/The Lakes Draft Character Area Plan?

Name not shown more than 2 miles

October 27, 2014, 1:07 PM

Which character area meetings did you attend for the Kiwanis/The Lakes area?

August 27

October 23

On the following scale, how do you rate the Draft Kiwanis/The Lakes Character Area Plan as reflecting the character of Kiwanis/The Lakes with 0 being extremely dissatisfied and 10 extremely satisfied?

7

What is the primary reason for the score you gave?

Under Projects and Priorities we need a stronger enforcement of existing city codes regarding landscaping, maintenance, trailers, boats and RV's in front yards and number of tenants living in rentals.

What is the most important improvement that would make you rate this Plan closer to a score of 10?

Under Projects: Arterial Walls & Streetscape a time line to accomplish within next 2 years.

On the following scale, how do you rate the Draft Kiwanis/The Lakes Character Area Plan as capturing the important issues and projects for Kiwanis/The Lakes with 0 being extremely dissatisfied and 10 being extremely satisfied?

8

What is the primary reason for the score you gave?

It is a plan for today as well as the future.

What is the most important improvement that would make you rate this Plan closer to a score of 10?

Enhance arterial streetscape appearance.

On the following scale, how do you rate the public process for gathering input into the Draft Kiwanis/The Lakes Character Area Plan for Kiwanis/The Lakes with 0 being extremely dissatisfied and 10 being extremely satisfied?

8

What is the primary reason for the score you gave?

Many Opportunities to give input.

What is the most important improvement that would make you rate this Plan closer to a score of 10?

Maybe a mission like statement defining the type of community we are and want to be or remain in the future.

Additional Comments

Kiwanis/The Lakes Draft Character Area Plan

What do you think of the Kiwanis/The Lakes Draft Character Area Plan?

We spoke with a City employee about some immediate issues my husband had and he said he would email us additional contacts the next day we never heard from him.

Kiwanis/The Lakes Draft Character Area Plan

What do you think of the Kiwanis/The Lakes Draft Character Area Plan?

Dave Gillmore more than 2 miles

October 25, 2014, 1:24 PM

Which character area meetings did you attend for the Kiwanis/The Lakes area?

October 23

On the following scale, how do you rate the Draft Kiwanis/The Lakes Character Area Plan as reflecting the character of Kiwanis/The Lakes with 0 being extremely dissatisfied and 10 extremely satisfied?

7

What is the primary reason for the score you gave?

The plan sounds very good, but my understanding from the meeting that I attended is that there is no or very limited funding to proceed with any of the plans.

What is the most important improvement that would make you rate this Plan closer to a score of 10?

Assurance that the plan would be funded and implemented within a five year period.

On the following scale, how do you rate the Draft Kiwanis/The Lakes Character Area Plan as capturing the important issues and projects for Kiwanis/The Lakes with 0 being extremely dissatisfied and 10 being extremely satisfied?

8

What is the primary reason for the score you gave?

I feel that there is a critical need for more bike lanes, more trees, more shade and better streetscapes in this area as the plan is proposing.

What is the most important improvement that would make you rate this Plan closer to a score of 10?

A greater limit on the number of apartments and multifamily dwellings. Stricter control and charges for owners/landlords of rental units. This neighborhood needs more stable family units, and not so many rental transients. Also the Western Canal path needs much more vegetation to provide shade and make it more attractive.

On the following scale, how do you rate the public process for gathering input into the Draft Kiwanis/The Lakes Character Area Plan for Kiwanis/The Lakes with 0 being extremely dissatisfied and 10 being extremely satisfied?

0

What is the primary reason for the score you gave?

I ignored the notices for the first five meetings because they referred to the Kiwanis/Lake Character area. I live in the Optimist Park neighborhood area and felt that the meeting notices did not relate to me. Speaking to others in my area, they felt the same. From the map at the meeting with the blue dots for attendees residences,

Kiwanis/The Lakes Draft Character Area Plan

What do you think of the Kiwanis/The Lakes Draft Character Area Plan?

it is apparent that the Optimist Park area was grossly under represented which was likely because they did not understand that they were to be included. Even though I now know that my area is covered in this plan, the name makes me feel that I am not a welcomed participant in the it.

What is the most important improvement that would make you rate this Plan closer to a score of 10?

Changing the name to: Kiwanis/The Lakes/Optimist Park Character Area would make the residents of Optimist Park feel included in the plan.

Additional Comments

I am disappointed that because of the name presented I did not attend all of the meetings. I would have liked to have participated in the process and feel that I would have been able to add valuable input.

Kiwanis/The Lakes Draft Character Area Plan

What do you think of the Kiwanis/The Lakes Draft Character Area Plan?

Kathy Mutch more than 2 miles

October 17, 2014, 3:28 PM

Which character area meetings did you attend for the Kiwanis/The Lakes area?

None

On the following scale, how do you rate the Draft Kiwanis/The Lakes Character Area Plan as reflecting the character of Kiwanis/The Lakes with 0 being extremely dissatisfied and 10 extremely satisfied?

8

What is the primary reason for the score you gave?

Seems to be an emphasis on patio homes. Would prefer emphasis on single family homes. Also need a dog park.

What is the most important improvement that would make you rate this Plan closer to a score of 10?

Build a dog park at Kiwanis park.

On the following scale, how do you rate the Draft Kiwanis/The Lakes Character Area Plan as capturing the important issues and projects for Kiwanis/The Lakes with 0 being extremely dissatisfied and 10 being extremely satisfied?

9

What is the primary reason for the score you gave?

Like the emphasis on walkability, and native vegetation.

What is the most important improvement that would make you rate this Plan closer to a score of 10?

N/A

On the following scale, how do you rate the public process for gathering input into the Draft Kiwanis/The Lakes Character Area Plan for Kiwanis/The Lakes with 0 being extremely dissatisfied and 10 being extremely satisfied?

10

What is the primary reason for the score you gave?

Plenty of opportunities for input.

What is the most important improvement that would make you rate this Plan closer to a score of 10?

N/A

Additional Comments

Kiwanis/The Lakes Draft Character Area Plan

What do you think of the Kiwanis/The Lakes Draft Character Area Plan?

No Response

KIWANIS / THE LAKES



CHARACTER AREA



Name STEVE RATHS
 Address 5433 S. HOLBROOK LN.
 City TEMPE State AZ Zip 85283
 Business (If applicable) — Phone 480-831-6205
 E-Mail dipper40@hotmail.com

1. Which character area meetings did you attend for the Kiwanis/The Lakes area?
- | | | |
|--------------------------------------|------------------------------------|--|
| <input type="checkbox"/> February 26 | <input type="checkbox"/> June 26 | <input type="checkbox"/> October 21 |
| <input type="checkbox"/> April 5 | <input type="checkbox"/> August 26 | <input checked="" type="checkbox"/> October 23 |
| <input type="checkbox"/> June 2 | <input type="checkbox"/> August 27 | <input type="checkbox"/> None |

2. On the following scale, how do you rate the **Draft Kiwanis/The Lakes Character Area Plan** as reflecting the character of Kiwanis/The Lakes? *WE ARE "TEMPE!" ENOUGH WITH MONEY - WASTING DIVISIONS.*

Extremely Dissatisfied 0 1 2 3 4 5 6 7 8 9 10 Extremely Satisfied

What is the primary reason for the score you gave?

*IF MEETINGS HAVE BEEN HELD SINCE FEB, WHY WAS THIS CARD FOR OCT. 23 THE ONLY ONE WE GOT AT ABOVE ADDRESS?
 ALSO, TEMPE IS \$30 MILLION IN THE RED WITH A \$40 MILLION DAM TO PAY FOR! INSTEAD OF WASTING ALL OUR TAX MONEY ON THIS TYPE OF THING? PRINTING COSTS ALONE MUST BE AMAZING. LET'S JUST GO BACK TO BEING 'TEMPE' INSTEAD OF SO MANY "DIVISIONS." IT MAKE NO SENSE OTHER*

THAN PAYING A LOT OF SALARIES.

3. On the following scale, how do you rate the Draft Kiwanis/The Lakes Character Area Plan as capturing the important issues and projects for Kiwanis/The Lakes?

Extremely Dissatisfied 0 1 2 3 4 5 6 7 8 9 10 Extremely Satisfied

What is the primary reason for the score you gave?

ALL OF THE ABOVE

What is the most important improvement that would make you rate this Plan closer to a score of 10?

DROP IT. THIS IS ALL PART OF THE TERRIBLE GP2040. DO NOT NARROW ANY MORE STREETS. BIKES "OK" ON SIDEWALKS.

4. On the following scale, how do you rate the public process for gathering input into the Draft Kiwanis/The Lakes Character Area Plan for Kiwanis/The Lakes?

Extremely Dissatisfied 0 1 2 3 4 5 6 7 8 9 10 Extremely Satisfied

What is the primary reason for the score you gave?

THIS WAS THE FIRST CHAD WE GOT CONCERNING THIS IDEA. THIS ALSO HAPPENED WITH THE TRASH MEETING and THE BROADWAY ROAD MEETING.

What is the most important improvement that would make you rate this process closer to a score of 10?

-EXPAND LIBRARY HOURS BACK TO WHAT THEY USED TO BE - OPEN UNTIL 9 PM EXCEPT FRI, SAT, SUNDAY. -CONTINUE TO ADD MORE BULK TRASH

5. Additional Comments:

COLLECTIONS TO WHAT IT USED TO BE, AND LOWER OUR MONTHLY TAXPAPER BILLS FOR SUCH SERVICES, AS ALL THESE NEW CHARACTER "AMENITIES" WILL COST AND WE ALL KNOW WHO WILL EVENTUALLY BE PAYING FOR IT ALL... TEMPE TAXPAPERS!

KIWANIS / THE LAKES



CHARACTER AREA



Name Charlotte Thomas

Address 6411 S. River Drive, #48

City ~~Phoenix~~ Tempe State AZ Zip 85283

Business (if applicable) _____ Phone _____

E-Mail cpenquini@cableone.net

1. Which character area meetings did you attend for the Kiwanis/The Lakes area?

- February 26 *Can't remember.*
- April 5 *I missed first one*
- June 2
- June 26 *?*
- August 26
- August 27
- October 21
- October 23
- None

2. On the following scale, how do you rate the Draft Kiwanis/The Lakes Character Area Plan as reflecting the character of Kiwanis/The Lakes?

Extremely Dissatisfied 0 1 2 3 4 5 6 7 8 9 10 Extremely Satisfied

What is the primary reason for the score you gave?

"Character" area boundaries were not ~~as~~ defined by residents & name reflects that. My area (SE corner) doesn't identify with Kiwanis Park or The Lakes - Area too large - what characteristics in common?;

What is commitment of town council to implementation?

What is the most important improvement that would make you rate this Plan closer to a score of 10?

Figure out ways to address 1st time attendees later in the process or else close it, I prefer former rather than latter. Why did so many people not attend more than 1 meeting? Smaller meetings, closer to neighborhoods. Have tables at grocery stores, coffee shops. Simplify the visual slides - have more ways to ~~get~~ ^{get} input.

Incomplete list of HOAs on the map - Not multi-cultural participation -

3. On the following scale, how do you rate the **Draft Kiwanis/The Lakes Character Area Plan** as capturing the important issues and projects for Kiwanis/The Lakes?

Extremely
Dissatisfied 0 1 2 3 4 5 6 7 8 9 10 Extremely
Satisfied

What is the primary reason for the score you gave?

What is the most important improvement that would make you rate this Plan closer to a score of 10?

4. On the following scale, how do you rate the public process for gathering input into the **Draft Kiwanis/The Lakes Character Area Plan** for Kiwanis/The Lakes?

Extremely
Dissatisfied 0 1 2 3 4 5 6 7 8 9 10 Extremely
Satisfied

What is the primary reason for the score you gave?

What is the most important improvement that would make you rate this process closer to a score of 10?

5. Additional Comments:
