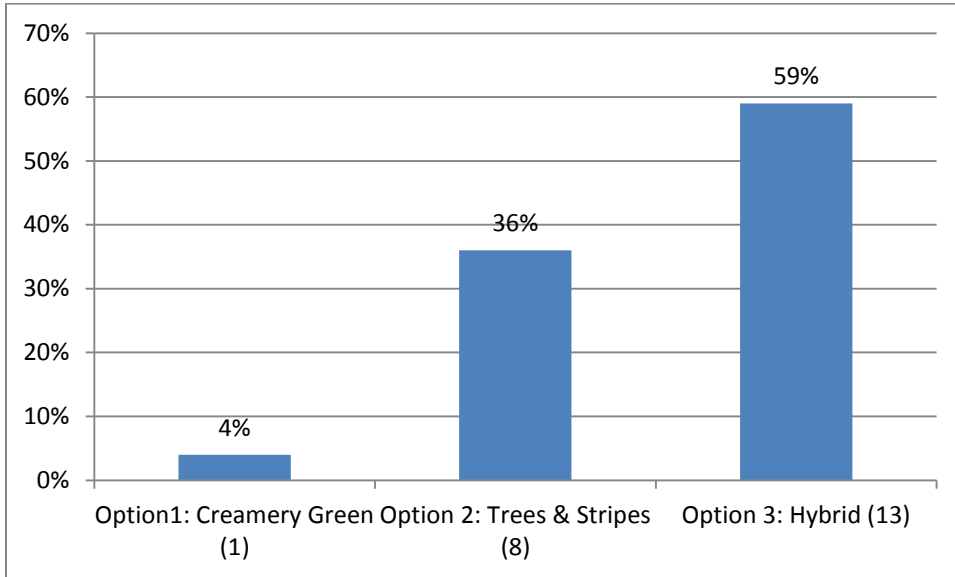
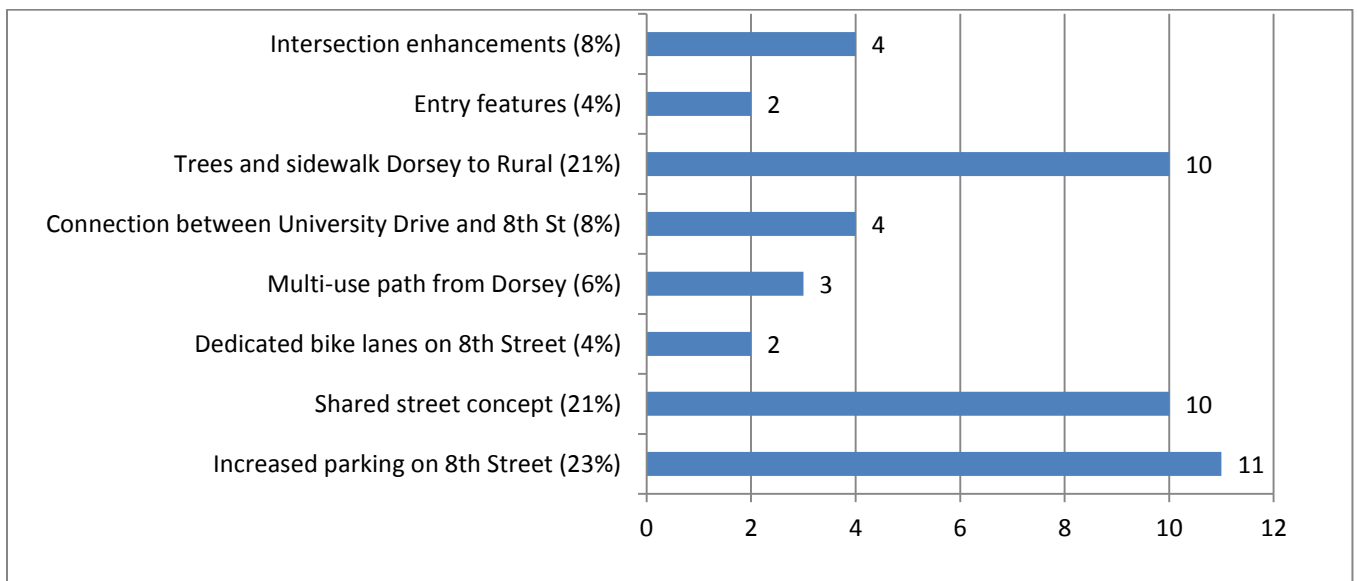


**8th Street Streetscape & Creamery Rail Spur Multi-use Path:
Survey Responses online and from September 30, 2014 public meeting
(September 30 – October 12)**

1. The three concepts shown below represent different combinations of some of the elements from the preliminary design concept. Please choose the option you think best captures what you would like to see for 8th Street:



2. Listed below are design elements included in all three concepts. Which two (2) of the elements are the most important to you?

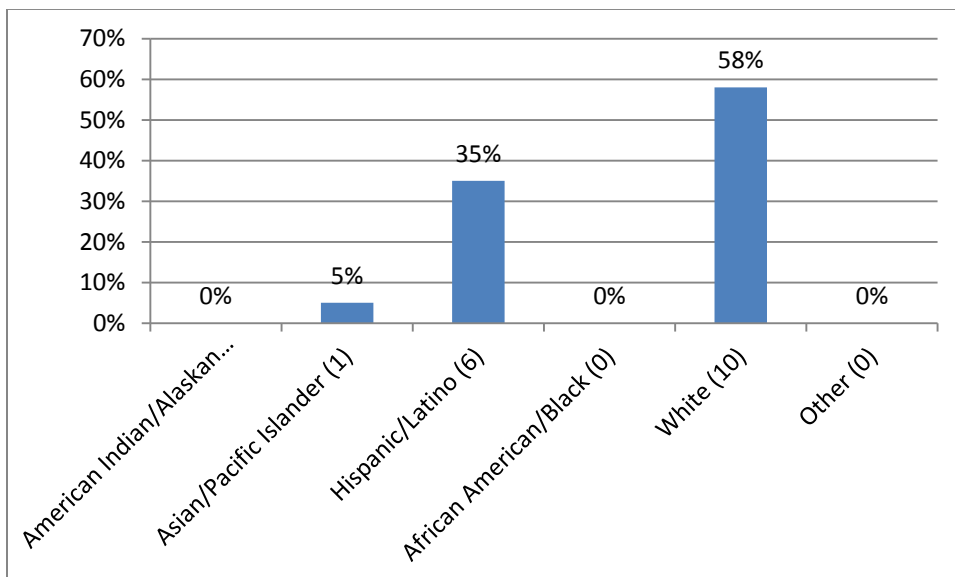


3. What else would you like to tell us about how you think 8th Street should be designed?

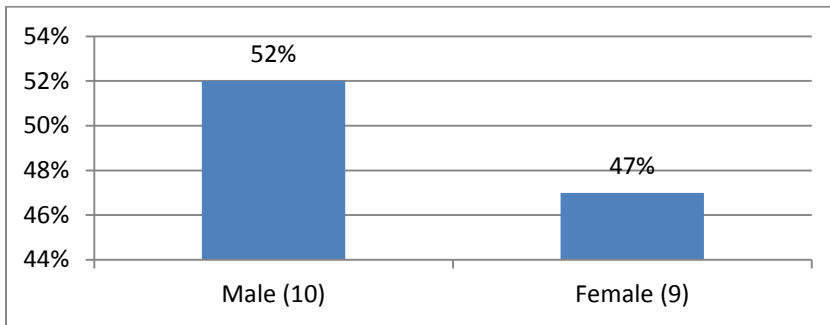
1. I'd like to see a better connection from the neighborhood to Creamery Park.
2. West half NEEDS to have designated bike space for commuters. East half can be shared space & is more conducive to the "residential street" feeling. All signage should explain basic etiquette for bicyclists- ie. ride on path, pass to left, etc.
3. I feel the neighborhood surrounding 8th St. would benefit from additional street parking, traffic calming, intersection/crosswalk treatments at Dorsey, Gary, Una and tree/landscape treatment
4. Pedestrian/bike right of way.. Street calming Tons of shade
5. Nice for disabled persons
6. Traffic speeds. Slow them down. We use this way to the scottsdale bike path
7. We go this way for bike rides, walking, bring our friends to the park/ 4 peaks and have almost been run over by cars while riding my bike.. Less auto traffic, working vehicles. Example.. Delivery truck cut threw traffic.. Thanks
8. I run our dog down this way.. More trees for shade and a area to rest.. Less car traffic.. Make it safer for us pedestrians
9. Shade, resting areas
10. bike safety is #1.
11. In the greenery, please include wildflowers and native plants. There are experts in this from the Botanical Gardens and SRP.
12. I would like to see increased parking from McClintock to Rural both sides. Also trees and sidewalk improvements from Dorsey to Rural. I oppose the bike path option #1
13. I oppose Option #1 Creamery Green because it will impede daily commerce activity due to garbage trucks and other trucks using that space- too dangerous for bikes and trucks to share. Need more parking on 8th St. Need more info on Option #3 but not too opposed to it.
14. Option #1 would do the most lasting harm to my business. Option #2 will be best choice for Four Peaks going forward.

The following questions are **voluntary**. If you choose to respond, please mark all that apply:

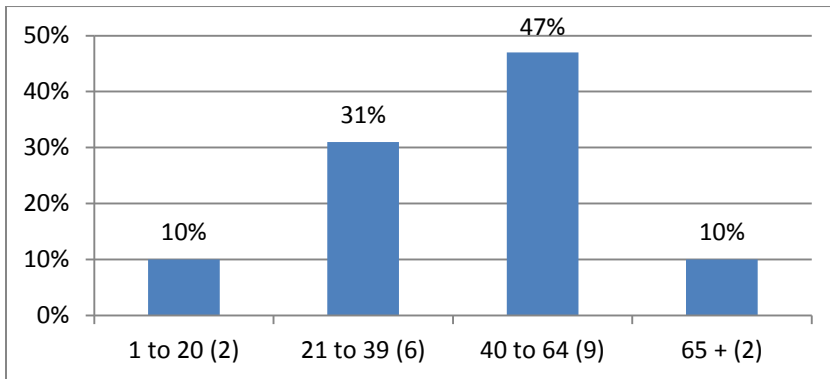
4. Ethnicity/Race:



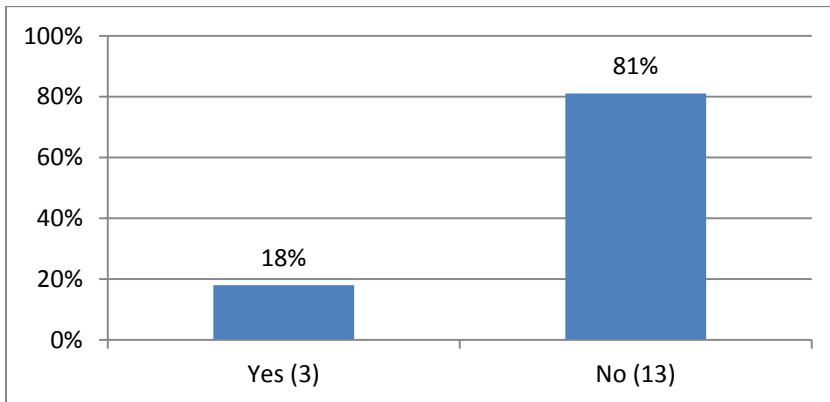
5. Gender:



6. Age:



7. Disabled:



8. Veteran Status:

