

MEMORANDUM

TO: Tempe Historic Preservation Commission
FROM: Chase Walman, Principal Planner, 480-858-2072
DATE: September 11, 2024
SUBJECT: College and University Grade Separated Crossing
ITEM #: 5



PURPOSE:

The purpose of this memo is to provide the Commission with a review of four preliminary design alternatives for a grade separated crossing at College Avenue and University Drive.

RECOMMENDATION OR DIRECTION REQUESTED:

Action.

CITY COUNCIL STRATEGIC PRIORITY:

- Performance Measure 3.26 - 20 Minute City
- Performance Measure 3.14 - ADA Transition Plan

BACKGROUND INFORMATION:

The College and University Grade Separated Crossing Project was first initiated as part of an ASU commissioned study that the City of Tempe participated in to explore grade separation at three high pedestrian volume intersections. The goal of the study was to provide a dedicated pedestrian crossing to address pedestrian/vehicular conflicts and reduce transit/vehicular congestion. After the study was complete in 2020, the City of Tempe pursued and were ultimately awarded federal grants to complete the final design and construction of the highest pedestrian volume intersection: College Ave and University Dr.

In December 2023, Bowman Group was selected to prepare the final plans, specifications, and estimate for the project. In May 2024, the project's design kicked-off. After data collection and receiving preliminary feedback from the directly adjacent property owners (ASU and Newman Center), four preliminary design alternatives have been developed that we are seeking feedback on:

- 1: Pedestrian Bridge
- 2A: Underpass on the West side of College Avenue
- 2B: Underpass in a SW/NE alignment
- 3: "Y" Underpass, providing entrances on both the northwest and northeast corners

Throughout September, staff will be seeking feedback from the Commission on Disability Concerns, Transportation Commission, Historic Preservation Commission, and City Council. Two broader public meetings are also anticipated to take place in late October. Additional outreach will be taking place from late 2024 through summer 2025 at the draft 30% and 60% design stages.

FISCAL IMPACT or IMPACT TO CURRENT RESOURCES:

Design:

Federal Grants: \$1,462,950
Local Match: \$88,429

Construction:

Federal Grants: \$4,506,798
Local Match: \$256,887

ATTACHMENTS:

College and University Grade Separated Crossing

PowerPoint

College & University Grade Separated Crossing

Commission on Disability Concerns – Sep. 09, 2024

Transportation Commission – Sep. 10, 2024

Historic Preservation Commission – Sep. 11, 2024





Project History

- Started in 2019 as part of an ASU commissioned study of grade separating three high pedestrian volume intersections.
- In 2022, the City applied for and were awarded federal grants to complete this project's final design and construction
- Project's design kicked-off in May 2024, with utility research, data collection, and stakeholder's meetings with the immediately adjacent property owners.





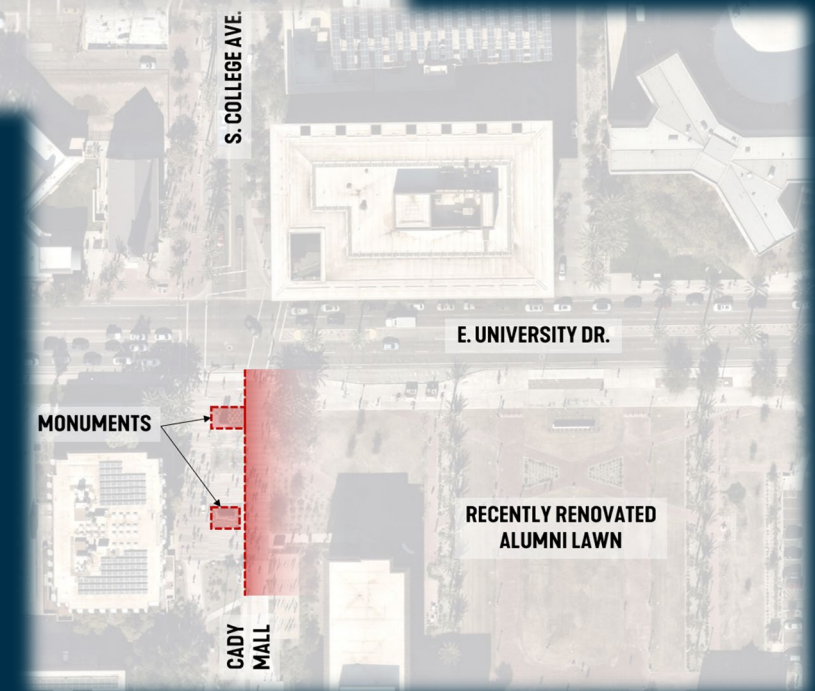
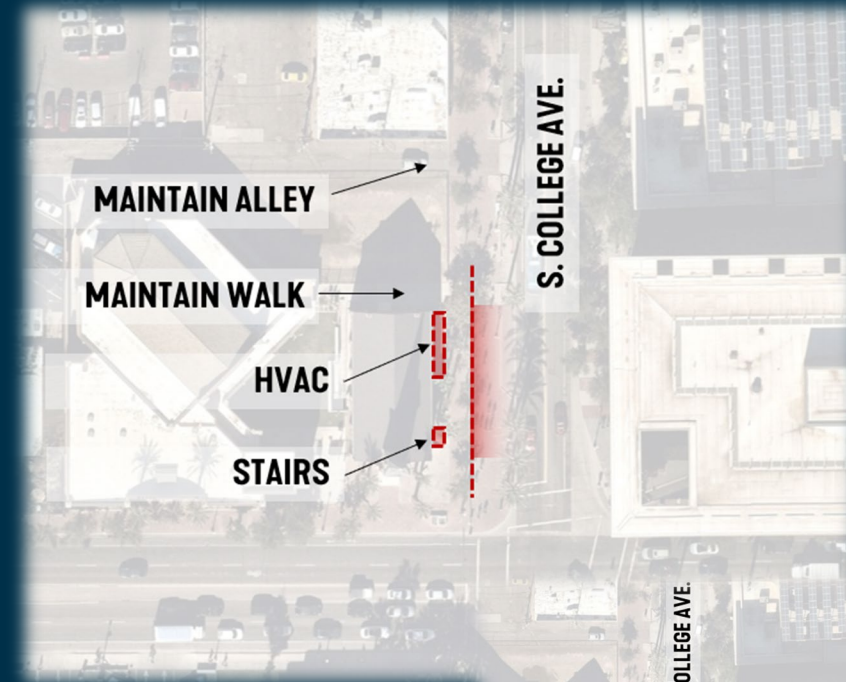
Stakeholder Feedback Themes

Newman Center:

- Maintain clear access to alley, College Ave entrance, College Ave staircase, HVAC equipment.
- Protect in place architectural features and elements of the church, with special consideration to construction impacts such as vibrations.
- Maintain visibility of Mary College and Newman Community Center

ASU:

- Protect in place and maintain clear visibility of landmark signage
- Ensure proposed bridge landings and/or underpass ramps are placed west of Cady Mall and Alumni Lawn
- Provide access for golf carts to circulate around improvements



PROJECT GOALS

- CREATE A SAFE PEDESTRIAN/BICYCLE CROSSING
- IMPROVE VEHICULAR TRAFFIC FLOW
- ENHANCE CONNECTIVITY TO CHURCH
- POSITIVELY ENGAGE EXISTING LANDMARKS
- CREATE AN ENGAGING EXPERIENCE
- CREATE WAYFINDING/SAFETY THROUGH VISUAL CONNECTION
- CREATE POTENTIAL LANDMARK FOR TEMPE/ASU

S. COLLEGE AVE.

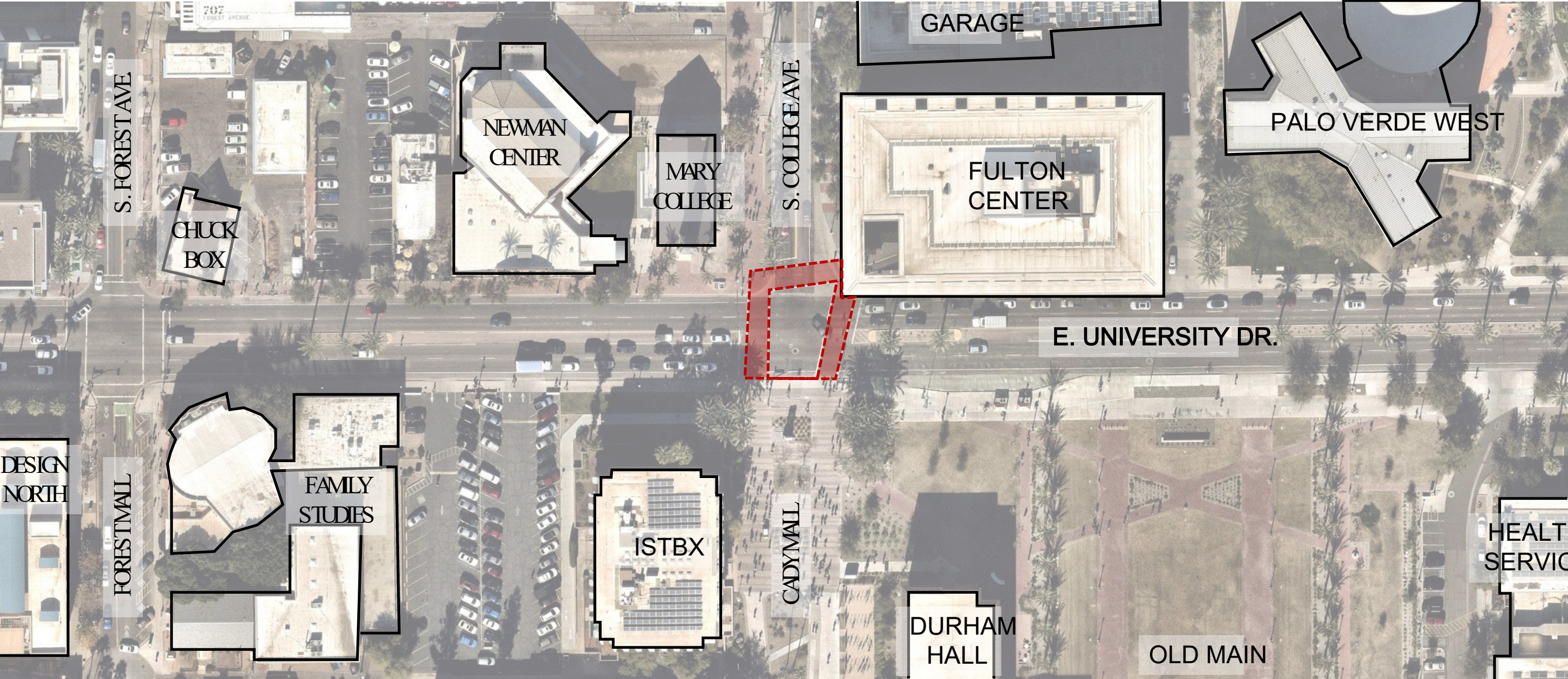


E. UNIVERSITY DR.

CAMPUS / DOWNTOWN CIRCULATION



SITE CONTEXT



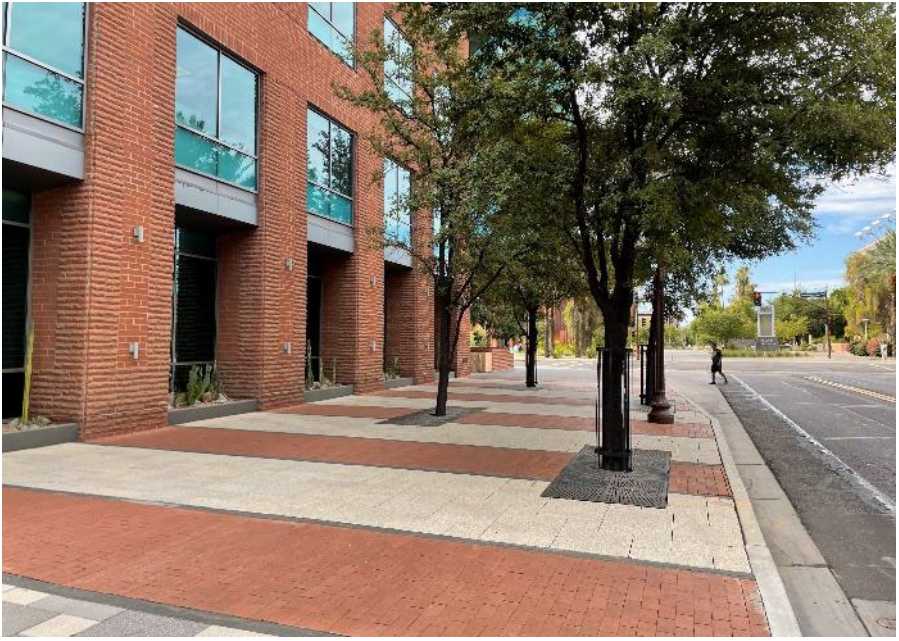
SITE PHOTOS

MARY COLLEGE AT ASU



SITE PHOTOS

FULTON CENTER



SITE PHOTOS

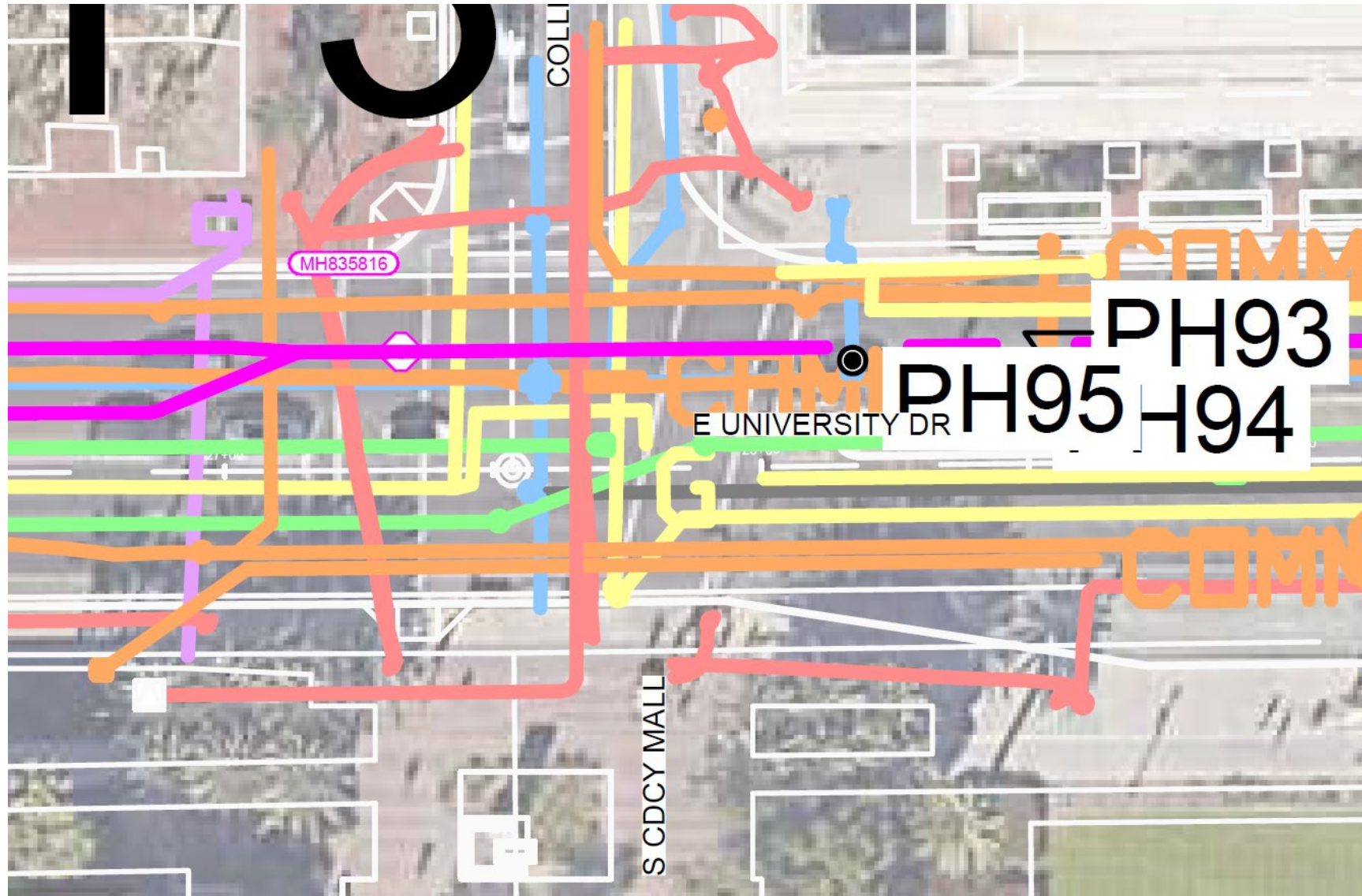
CADY MALL



UTILITIES

ALL KNOWN UTILITIES

1. AT&T – Coax and Fiber
2. APS Electric
3. Arizona State University
4. City of Tempe – Sewer, Traffic Signals, Water
5. City of Tempe Cable – CATV, Coaxial, Fiber Optics
6. Crown Castle Solutions – Fiber Optics
7. CenturyLink – Coaxial, Fiber Optics
8. Cox Communications
9. MCI (Verizon Business) – Fiber Optics
10. SRP – Communications, Electric, Fiber Optics, Irrigation
11. Southwest Gas – Gas & High Pressure Gas
12. Zayo Group – Communication, Fiber Optics



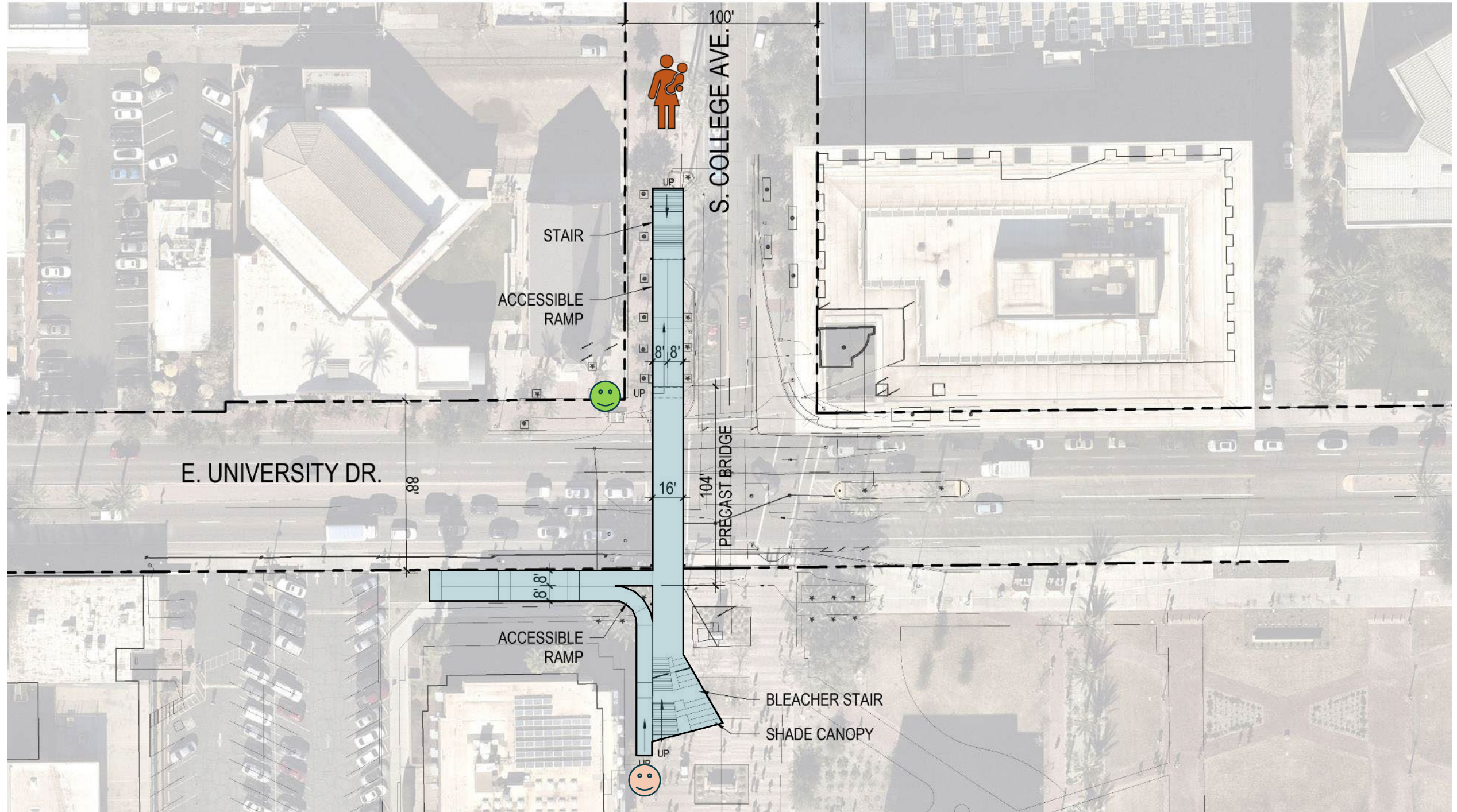


Option 1 | Bridge



1 | BRIDGE

SITE PLAN



1 | BRIDGE

SOUTH AERIAL



1 | BRIDGE

EAST FROM UNIVERSITY



1 | BRIDGE

NORTH END FROM EAST



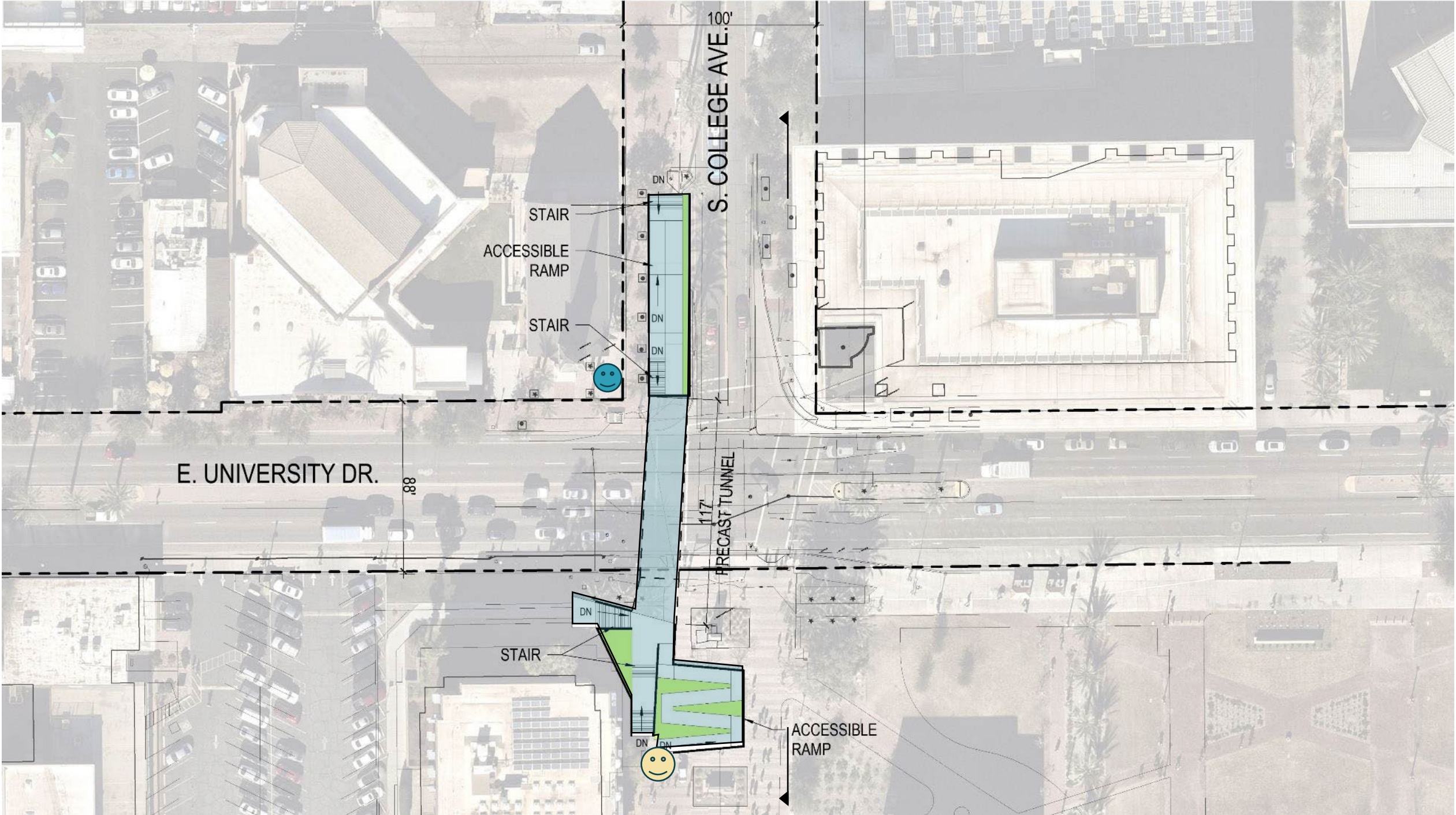


Option 2A and 2B Directional Underpass



2A | SINGLE TUNNELLED LEGE WEST

SITE PLAN



2A | WEST TUNNEL

AERIAL



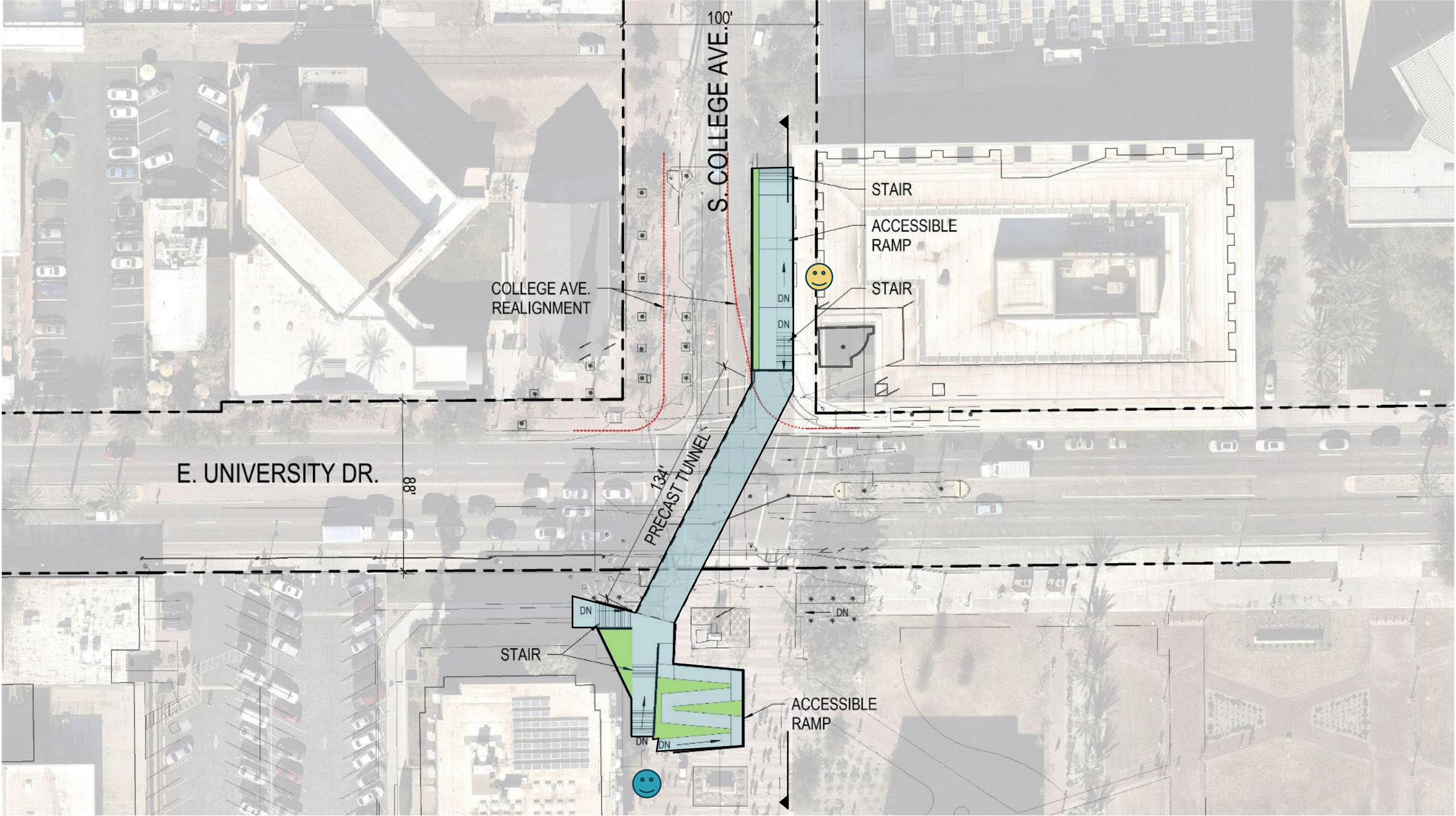
2A | WEST TUNNEL

NORTH RAMP



2B | SINGLE TUNNEL COLLEGE EAST

SITE PLAN



2B | EAST TUNNEL

AERIAL



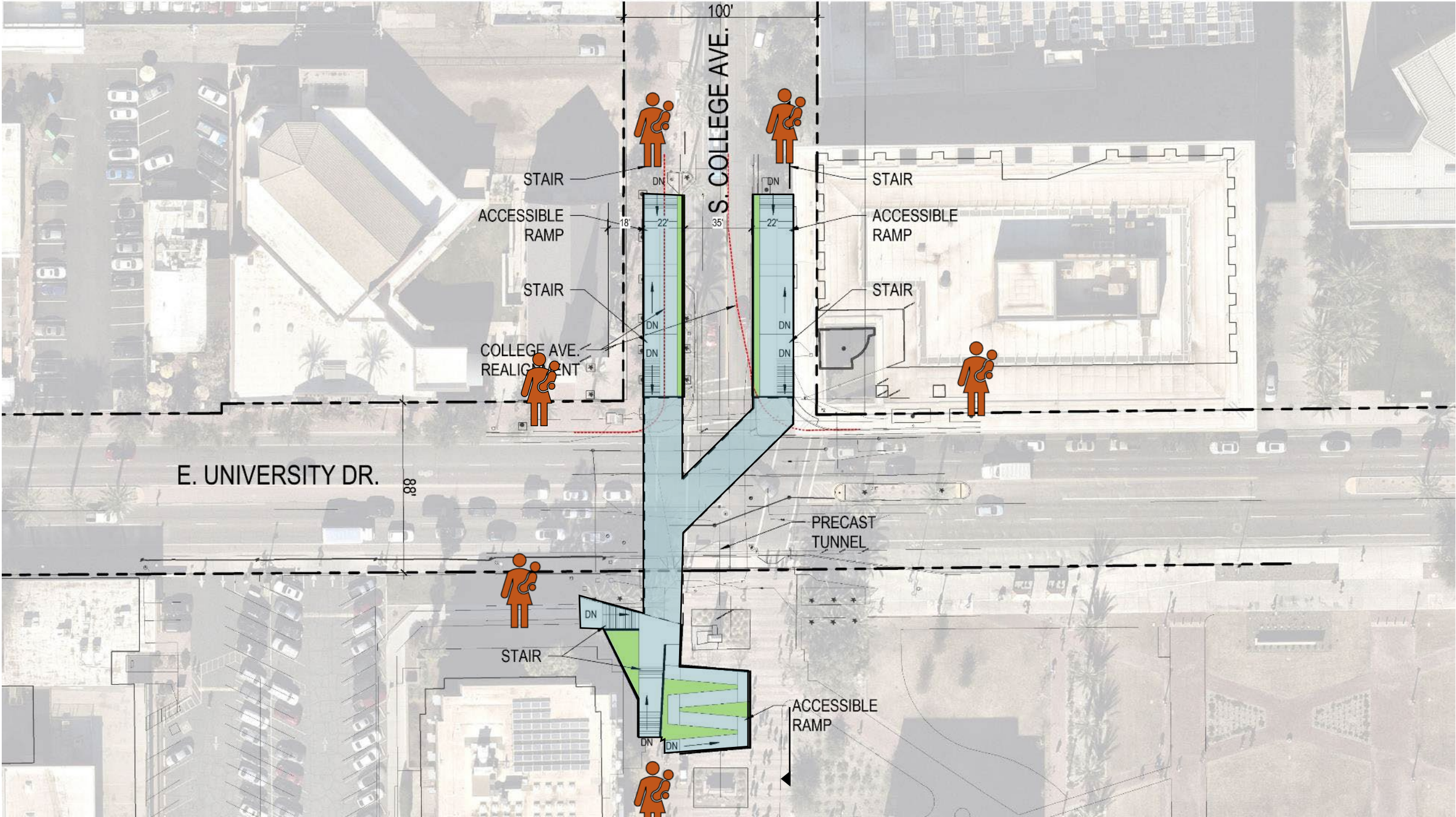


Option 3 – Y Tunnel



3 | 'Y' TUNNEL

SITE PLAN



3 | 'Y' TUNNEL

AERIAL

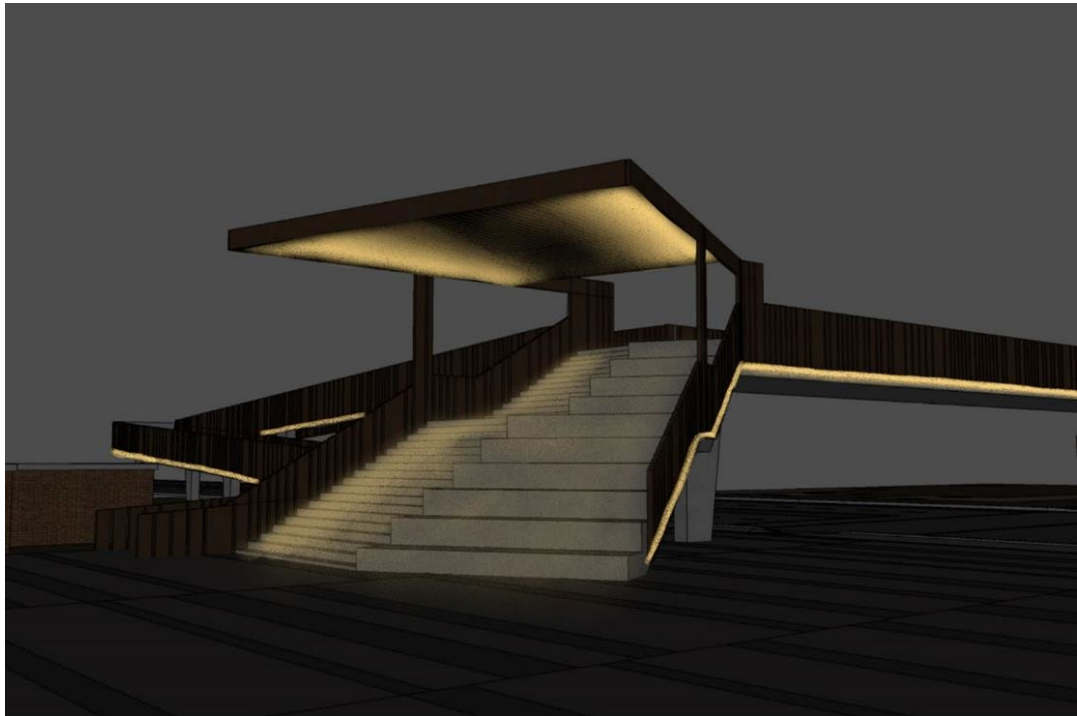
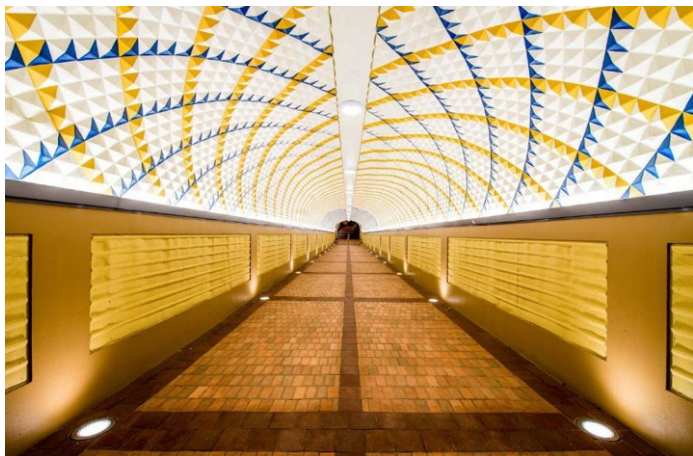
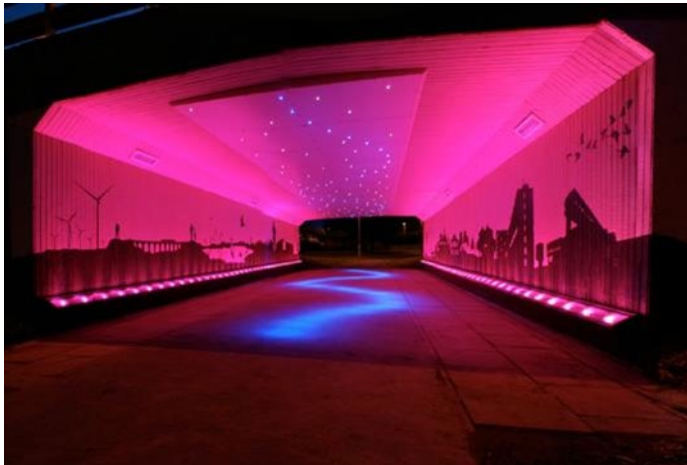


3 | 'Y' TUNNEL

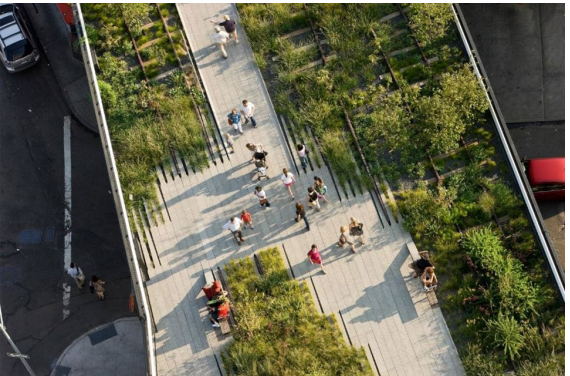
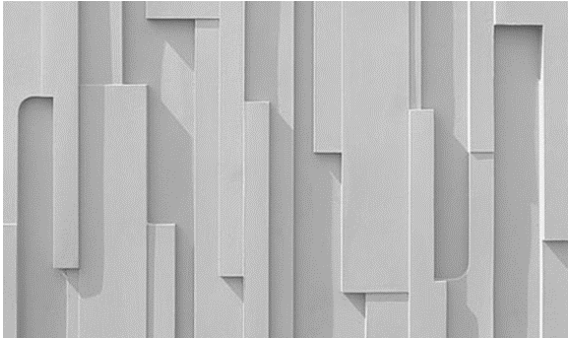
NORTH AERIAL



LIGHTING OPTIONS



LANDSCAPE CHARACTER





Upcoming Outreach

- Commission on Disability Concerns – **September 9th**
 - Transportation Commission – **September 10th**
 - Historic Preservation Commission – **September 11th**
 - City Council – **September 17th**
 - Public Meeting Round 1 – **October 22nd**
-
- Additional outreach to occur at draft 30% and draft 60% anticipated to occur late-2024 through mid-2025
 - Design anticipated to be complete late 2025, with construction mid-2026.



Thank You!
Questions?

Chase Walman
chase_Walman@tempe.gov