

Ken McDonald Golf Course Clubhouse Meeting

April 15, 2024



Outline



- Project Background & Objectives
- Feedback Received
- Review Update Concept Elements
- Next Steps & Timeline
- Comments & Questions

The advertisement features a photograph of the Ken McDonald Golf Course clubhouse, a modern building with a large arched entrance and a sign that reads 'KEN McDONALD GOLF COURSE CITY OF TEMPE'. In the foreground, there are desert plants and a large rock. Overlaid on the image is a yellow banner that says 'We heard your feedback!'. Below the banner, the Tempe logo and COURSE.CO logo are visible. The text below the banner reads: 'Ken McDonald Golf Course clubhouse', 'View and comment on final site plans, which have been updated using public feedback.', 'In-Person: Monday, April 15 6-7 p.m. Tempe Public Library, Desert Willow Room 3500 S. Rural Road', 'Virtual: Monday, April 15 Noon-1 p.m. - Zoom Register at tempe.gov/clubhouse', 'Learn more:' followed by a QR code, and 'View project details and comment online April 15-29 at tempe.gov/forum'.

We heard your feedback!

Ken McDonald Golf Course clubhouse

View and comment on final site plans, which have been updated using public feedback.

In-Person: Monday, April 15
6-7 p.m.
Tempe Public Library, Desert Willow Room
3500 S. Rural Road

Virtual: Monday, April 15
Noon-1 p.m. - Zoom
Register at tempe.gov/clubhouse

Learn more:

View project details and comment online April 15-29 at tempe.gov/forum.

Project Background



- Fully renovated clubhouse
- Jointly funded by Tempe & CourseCo
- Partnering with Douglas Fredrikson Architects
- Utilizing previous survey information
- 3 phases:
 - Conceptual design: through this June
 - Formal design: June 2024 – July 2025
 - Construction: as soon as summer 2025

Project Objectives



- Upgrade food and beverage experience
- Add parking closer to facilities
- Improve golf practice facilities
- Upgrade golf retail experience
- Improve entry and identity
- Add meeting spaces for community and events
- Respect adjacency to neighbors
- Adhere to project budget
- Keep existing clubhouse operational throughout construction
- Attract more tourists and visitors
- Enhance connection to multiuse path

Feedback Received



- Survey responses (141), neighbors, & stakeholders
- Key takeaways:
 - Supportive of clubhouse concept & minor relocation
 - Supportive of additional parking by clubhouse
 - Supportive of west side practice area
 - Desire to keep east side practice green
 - Desire to restore distance on hole 18
 - Importance of buffering neighbors from increased clubhouse parking

Revised Site Context



Revised Site Plan



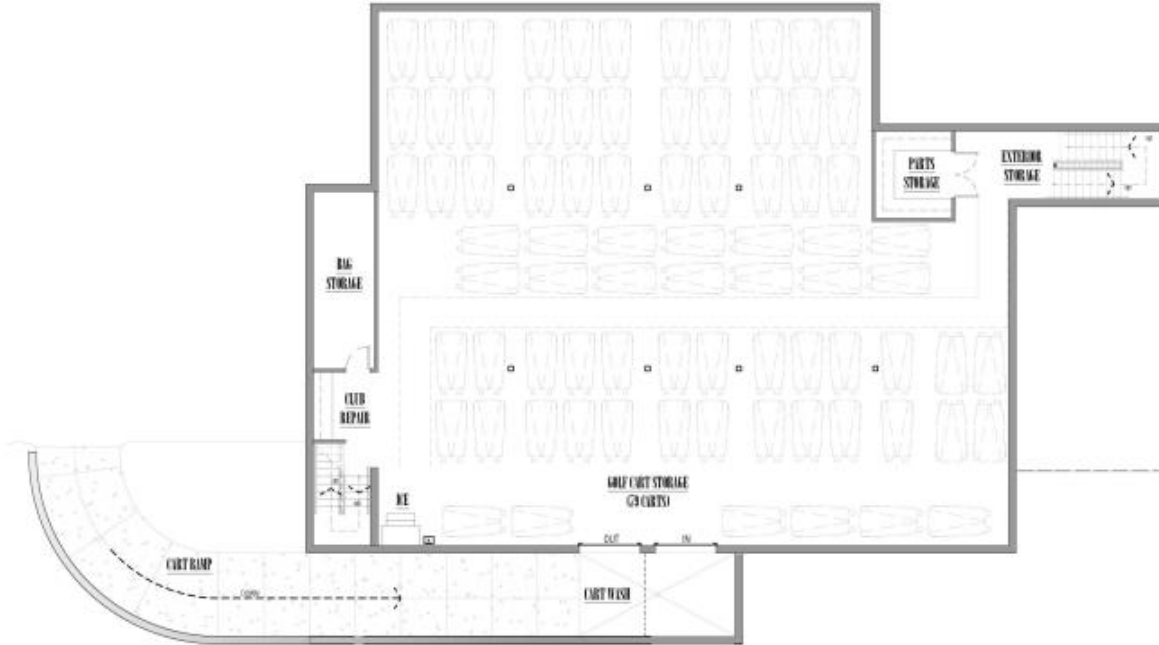
Revised Site Plan



Main Level Floor Plan



Lower Level Cart Barn



Elevations: South & West



South



West

Rendering



Character Board



board form concrete



interiors/views/exposed utilities



angled white metal fascia



perforated columns
with landscaping



raked block



We want to hear from you again!
Survey open April 15 thru 29
www.tempe.gov/forum

Council Work Study Session on May 16



Questions?



Tempe.