

Ken McDonald Golf Course Clubhouse Meeting

February 28, 2024





- Project Background
- Project Objectives
- Review Concept Elements
- Next Steps & Timeline
- Questions



We want

**YOUR
feedback**



**Ken McDonald
Golf Course clubhouse**

Project Background



- Fully renovated clubhouse
- Jointly funded by Tempe & CourseCo
- Partnering with Douglas Fredrikson Architects
- Utilizing previous survey information
- 3 phases:
 - Conceptual design: through this June
 - Formal design: June 2024 – July 2025
 - Construction: as soon as summer 2025

Project Objectives

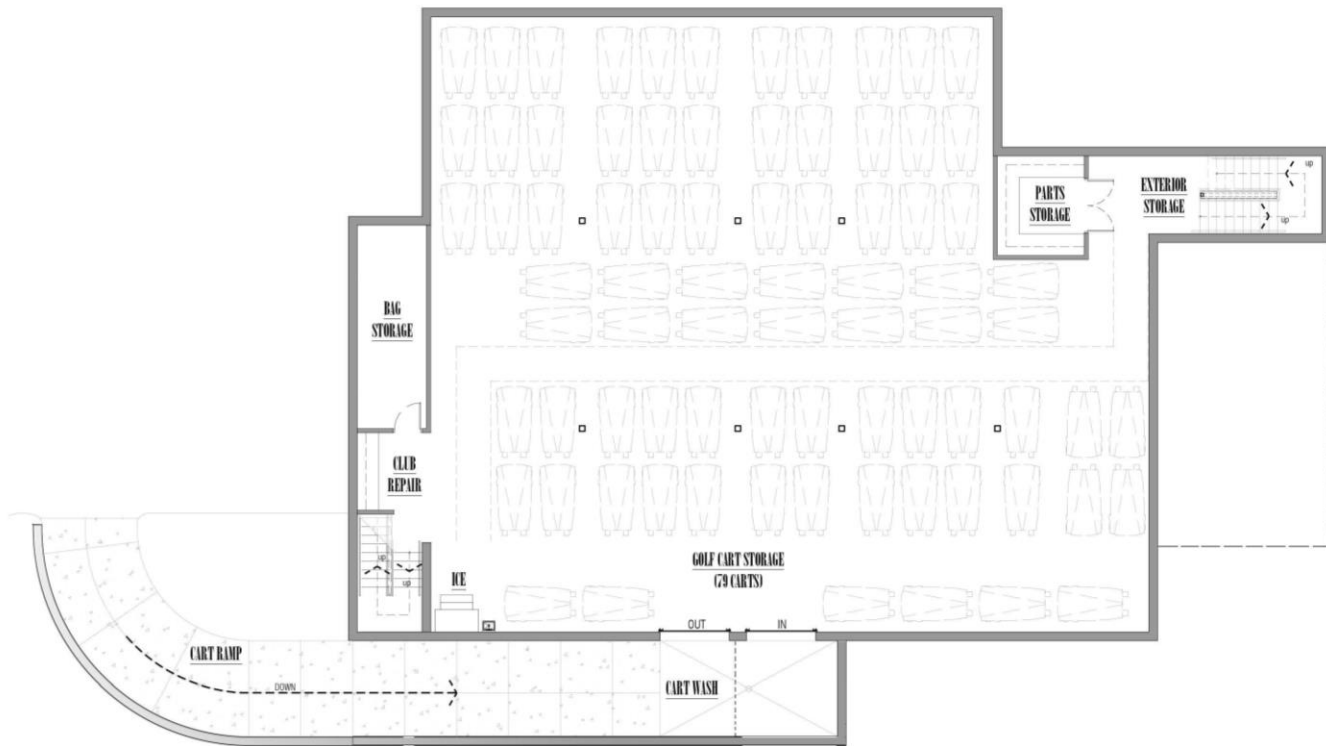


- Upgrade food and beverage experience
- Add parking closer to facilities
- Improve golf practice facilities
- Upgrade golf retail experience
- Improve entry and identity
- Add meeting spaces for community and events
- Respect adjacency to neighbors
- Adhere to project budget
- Keep existing clubhouse operational throughout construction
- Attract more tourists and visitors
- Enhance connection to multiuse path

Site Plan



Lower Level Cart Barn



Elevations: South & West

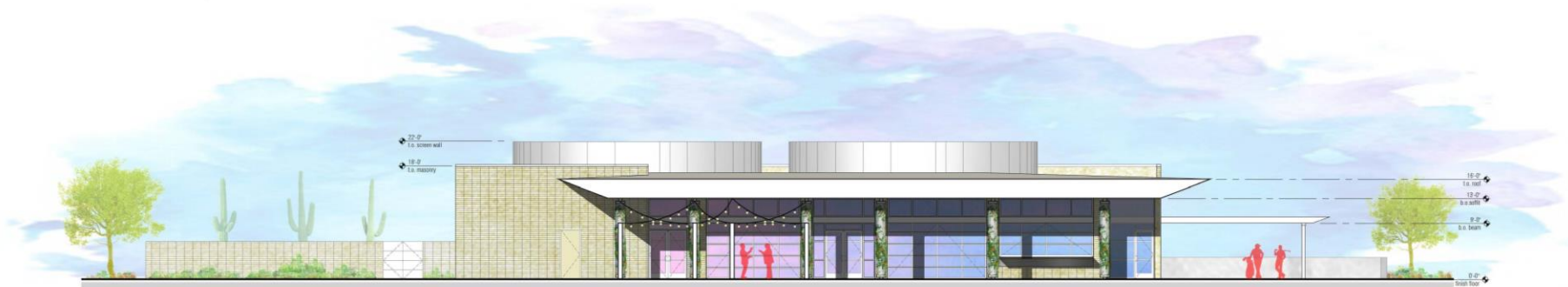


South



West

Elevations: North & East



North



East

Initial Rendering (1)



Initial Rendering (2)



Initial Rendering (3)



Character Board



board form concrete



interiors/views/exposed utilities



angled white metal fascia



perforated columns
with landscaping



raked block



We want to hear from you!
Survey open Feb. 28 thru March 20
www.tempe.gov/forum



Questions?



Tempe.