

Rain to Roots Ambassador Program- *October Meeting*

Welcome!

- What is your name?
- Why are you interested in being an Ambassador?
 - Summarize your “why” in 3 words!



Our “Why”

Green Stormwater Infrastructure helps us address...



Record-breaking
Extreme Heat



Severe Drought &
Water Use



Flooding & Water
Quality Concerns



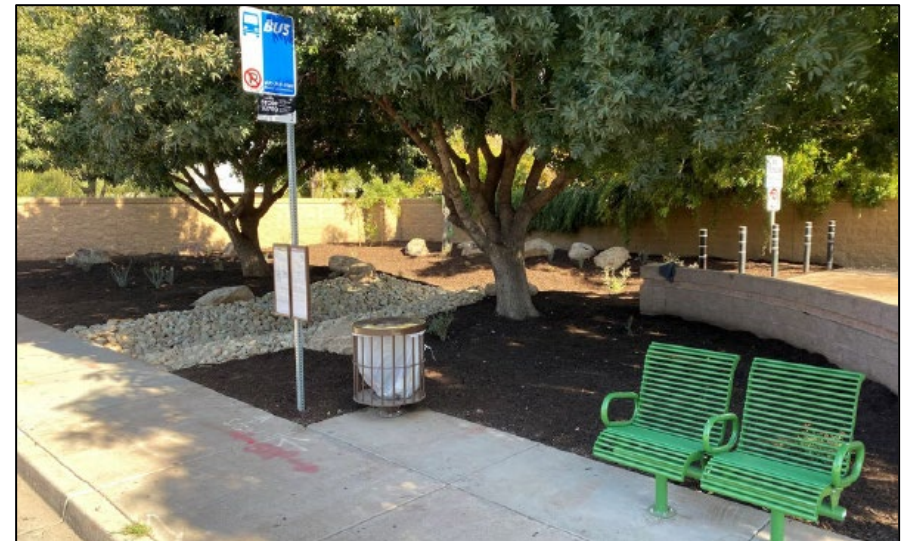
Need for Climate-
Ready Vegetation

The Strategy – Green Stormwater Infrastructure

Benefits of GSI:

- Supports tree canopy
- Reduces temperatures
- Reduces potable water use
- Mitigates flooding
- Promotes cleaner waterways
- Creates wildlife habitat

Learn more about GSI and its benefits at Sustainable Tempe – [Green Stormwater Infrastructure](#).



Rain to Roots Master Plan

- **Project Purpose**
 - Expand green infrastructure & urban cooling initiatives.
 - Promote cross-departmental coordination & planning.
 - Identify opportunities for long-term funding.
- **Areas of Opportunity**
 - Streetscapes – Public ROW, traffic calming
 - Multi-Use Paths
 - Parks
 - Neighborhoods
 - Private Development

Project Partners

Internal Partners

- **Sustainability and Resilience Office**
- **Municipal Utilities Department**
 - Water Conservation
 - Environmental Services
- **Community Services Department**
 - Parks & Recreation
- **Engineering and Transportation Department**
 - Transportation Planning
 - Streets Maintenance
 - Engineering
- **Community Development Department**

External Partners

- **Consultants** – Greeley & Hansen, WERK | urban design, & Raftelis
- **Rain to Roots Ambassadors**
- **Tempe Residents**
- **Private Businesses**
- ...And More!

*Major Goal =
Better Coordination!*

Your Voice, Your Future City

Rain to Roots Ambassador

- **Learn** more about stormwater and urban cooling initiatives.
- **Review** project materials.
- **Site visits** on pilot projects.
- **Advise** on direction of programs and policy recommendations to Tempe City Council.



Hybrid meetings on the **1st Wednesday of the month**, 5:30 – 6:30 PM.

Project Overview



**Assessing the
Current State**

**Codes &
Standards**

**Urban Forestry
Master Plan
Update**

**Future
Funding
Strategy**

**Pilot
Projects**

**Public
Outreach**

Phase 1: Assessing the Current State

Focused on understanding...

- Existing programs & initiatives.
- Previous GSI projects.
- Stormwater, urban forestry, heat, & equity data.
- Challenges & opportunities for expanding GSI.

... through interviews, document review, & research.

Assessing Existing Initiatives – *Urban Forestry*

Assessment:

Conducted Staff Interviews
Reviewed Master Plans
Reviewed GIS Maps/Data

Goals:

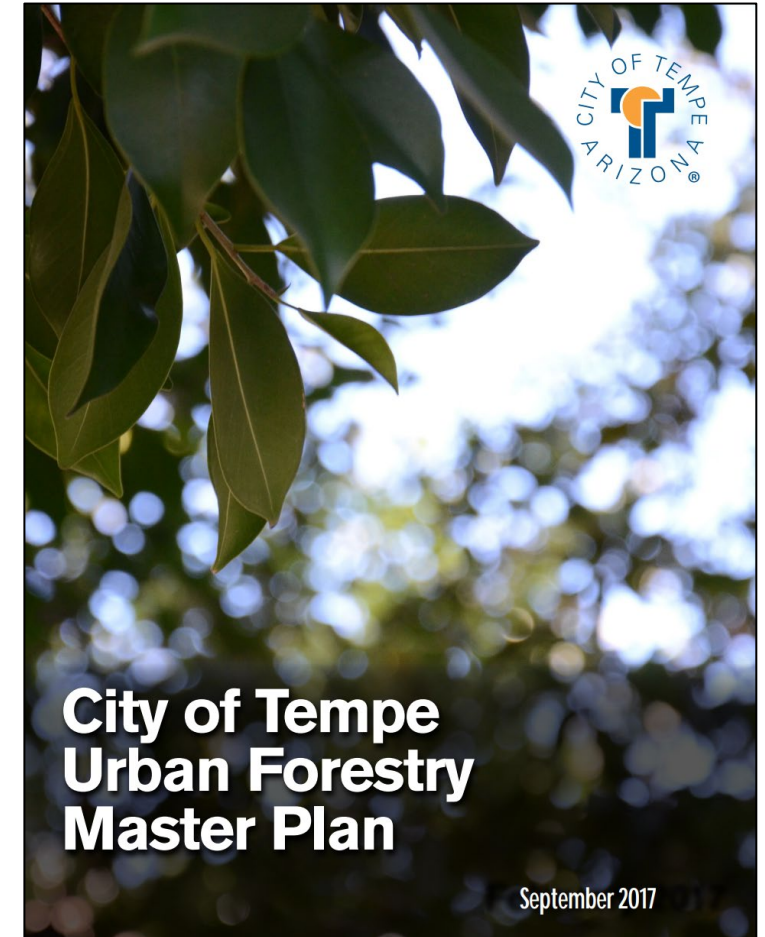
Protect existing trees
Increase tree canopy
Support trees' growth by incorporating GSI

Challenges:

Utility conflicts
Viewsheds
Maintenance practices
Partnership w/ private development & residents

Urban Forestry (Continued)

- Next Steps:
 - **Updated Master Plan** w/ recommendations for new programs & policies.
 - Updated **tree canopy maps** & assessment of canopy goals.
 - **New city codes and standards** to promote tree protection & maintenance practices.



Questions? Comments?

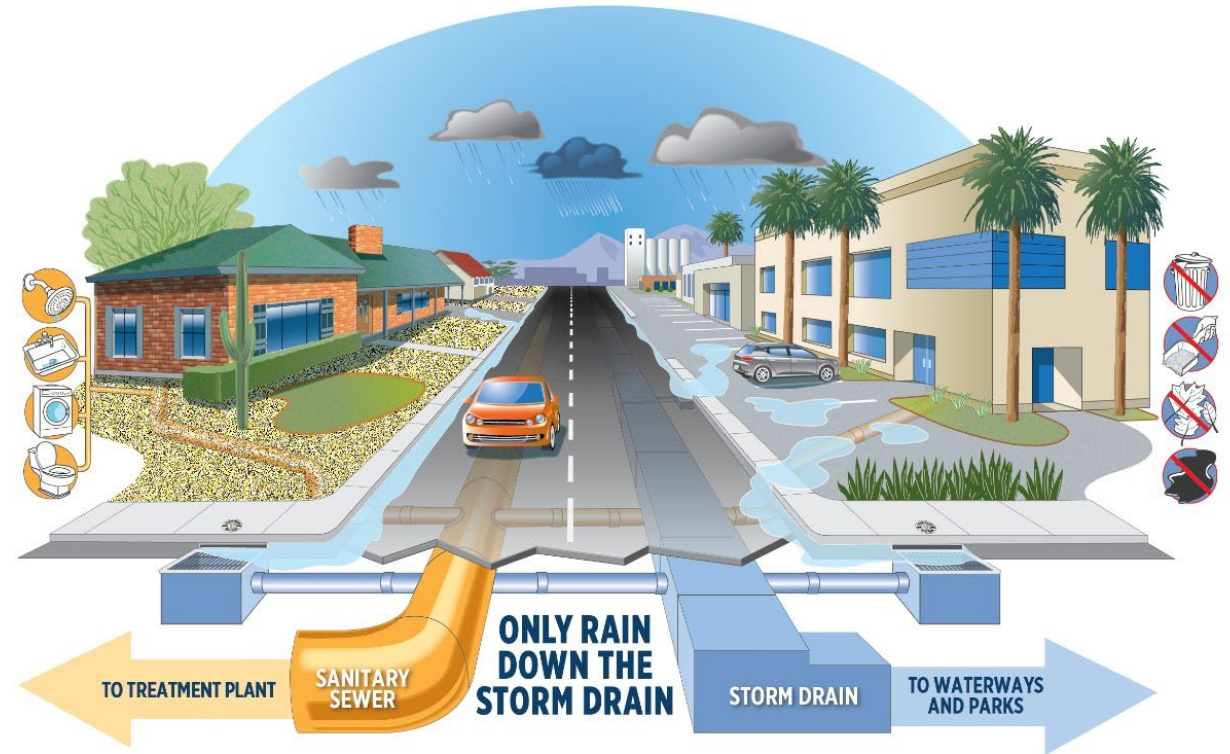
Assessing Existing Initiatives – Stormwater

Assessment:

Conducted Staff Interviews
Reviewed Drainage Studies & Master Plans
Reviewed Stormwater CIP Plan

Goals:

Compliance w/ MS4 Permit
Promote Stormwater Quality
Manage Stormwater Quantity
Integrate GSI into Stormwater CIP Projects



Stormwater (continued)

- **Next Steps:**
 - **Assess** GSI methods that can address both stormwater quantity (flooding) and stormwater quality (pollution) concerns.
 - **Identify** opportunities to integrate GSI into existing & future stormwater CIP projects.

Questions? Comments?

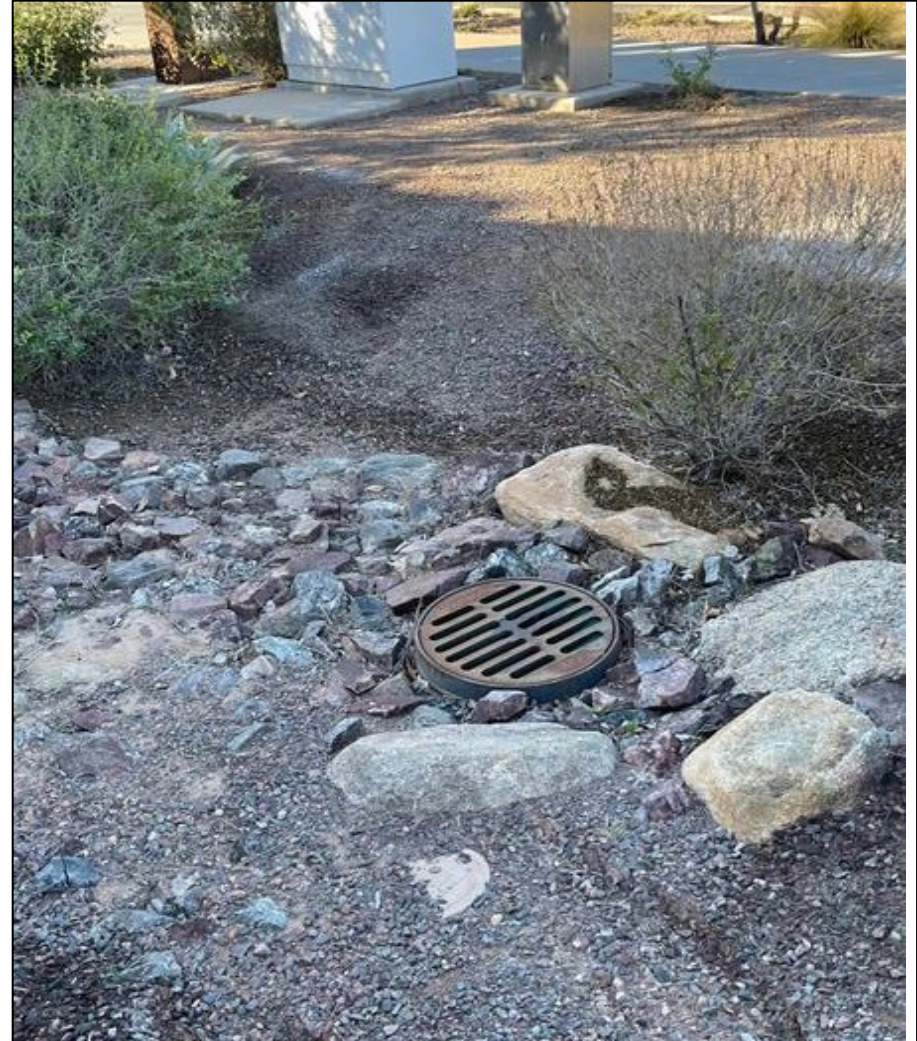
Assessing Existing Policies – Codes & Standards

Assessment:

Conducted Staff Interviews
Reviewed Engineering Design Criteria
Review Zoning & Development Code

Goals:

Provide Guidance for Integrating GSI
Address Existing Maintenance & Utility
Challenges
Streamline GSI Review Process



Codes & Standards (continued)

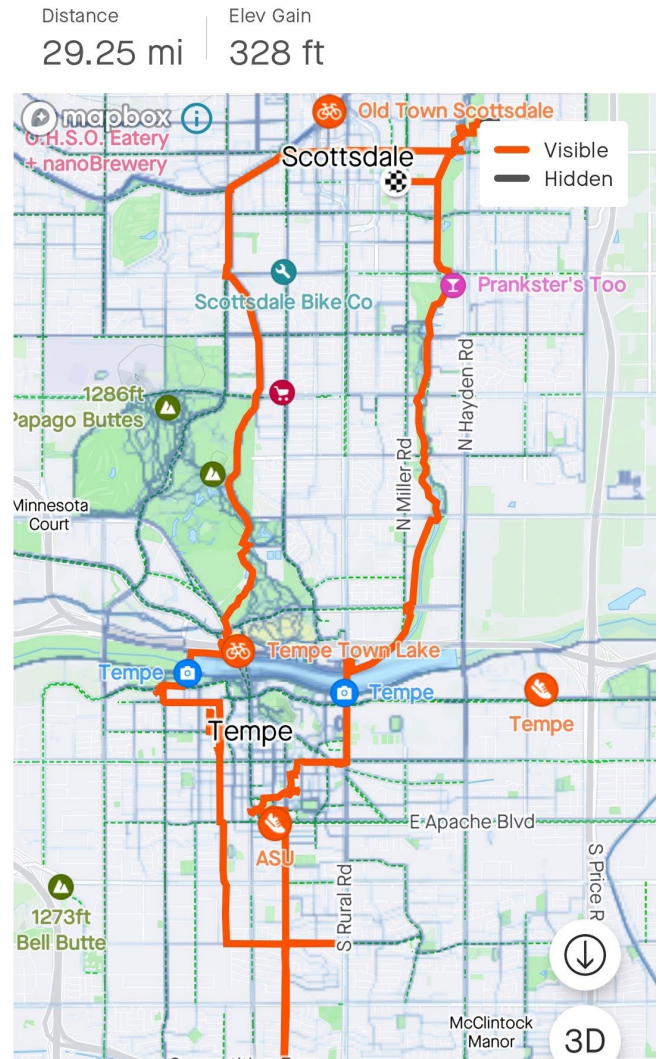
- Next Steps:
 - **Develop** Standards of Care
 - **Develop** Native Vegetation & Biodiversity Toolkit
 - **Integrate** GSI details & standards into existing city codes.
 - Engineering Design Criteria (*for public buildings*)
 - Zoning & Development Code (*for private development*).

Questions? Comments?

Assessing Existing & New GSI Projects – *Site Visits*

- **Assessment:**

- WERK team visited 25 different sites to inventory and assess existing and potential GSI.
- ***We will discuss this at the December meeting!***



Pilot Projects (continued)

- Next Steps:
 - **Create** a new GIS map that includes heat, flooding, urban forestry, and equity data.
 - **Develop** a pilot project prioritization tool to identify future projects.



Questions? Comments?

Pilot Projects (continued)

- *Pilot projects will...*
 - Build on the assessment of current state.
 - Demonstrate how GSI can be integrated in different types of projects.
 - Test new codes and standards.
 - Leverage connections with Urban Forestry & Environmental Services.





Future Funding Strategy

Next Steps - Utility Feasibility Study

- **Identify** alternative funding solutions for future GSI projects, such as an Urban Cooling and Stormwater Utility.
- **Review** other cities' strategies for funding stormwater management & urban greening initiatives.
- **Coordinate** with Water Rate Study by Municipal Utilities.

Questions? Comments?

Project Next Steps

- **Project Outcomes**
 - Pilot Project Designs
 - City Codes and Standards
 - Urban Forestry Master Plan Update
 - Sustainable Funding Strategy
- **Upcoming Ambassador Program Meetings:**
 - **November 1st:** Urban Forestry
 - **December 6th:** Pilot Projects
 - **January 3rd:** Stormwater



Questions?

Contact Maddie Mercer, Sustainability & Resilience Office

Email: Madeline_Mercer@tempe.gov

Phone: 480-355-8864

