

# DORSEY PARK AND RIDE

BOOK 962 PAGE 30

OFFICIAL RECORDS OF  
MARICOPA COUNTY RECORDER  
HELEN PURCELL  
2007 - 1325955  
12/19/2007 12:20 PM

LINE	BEARING	LENGTH
L1	N44°59'13"W	28.28'
L2	N61°57'22"E	18.50'
L3	N89°59'56"E	48.00'
L4	N44°59'13"W	28.28'
L5	N37°02'22"W	43.24'
L6	N00°32'58"E	14.35'
L8	S89°59'02"E	30.00'
L9	N00°00'58"E	16.82'

LINE	BEARING	LENGTH
EL1	N00°00'58"E	13.70'
EL2	N89°59'56"E	319.83'
EL3	N00°32'58"E	24.00'
EL4	N89°59'58"E	319.60'
EL5	N00°00'58"E	103.47'
EL6	N00°00'58"E	145.00'
EL7	N00°32'58"E	111.66'
EL8	N00°32'58"E	145.01'
EL9	N00°00'58"E	8.70'

NORTH QUARTER CORNER  
SECTION 23, TOWNSHIP 1  
NORTH, RANGE 4 EAST  
FOUND 3" CITY OF TEMPE  
BRASS CAP IN HAND HOLE

NEW SCHOOL FOR THE  
ARTS (AMENDED)  
BOOK 636, PAGE 18,  
M.C.R.

BUTTERFIELD PARK VI  
BOOK 240, PAGE 29,  
M.C.R.

TOMLINSON ESTATES  
BOOK 47, PAGE 36,  
M.C.R.

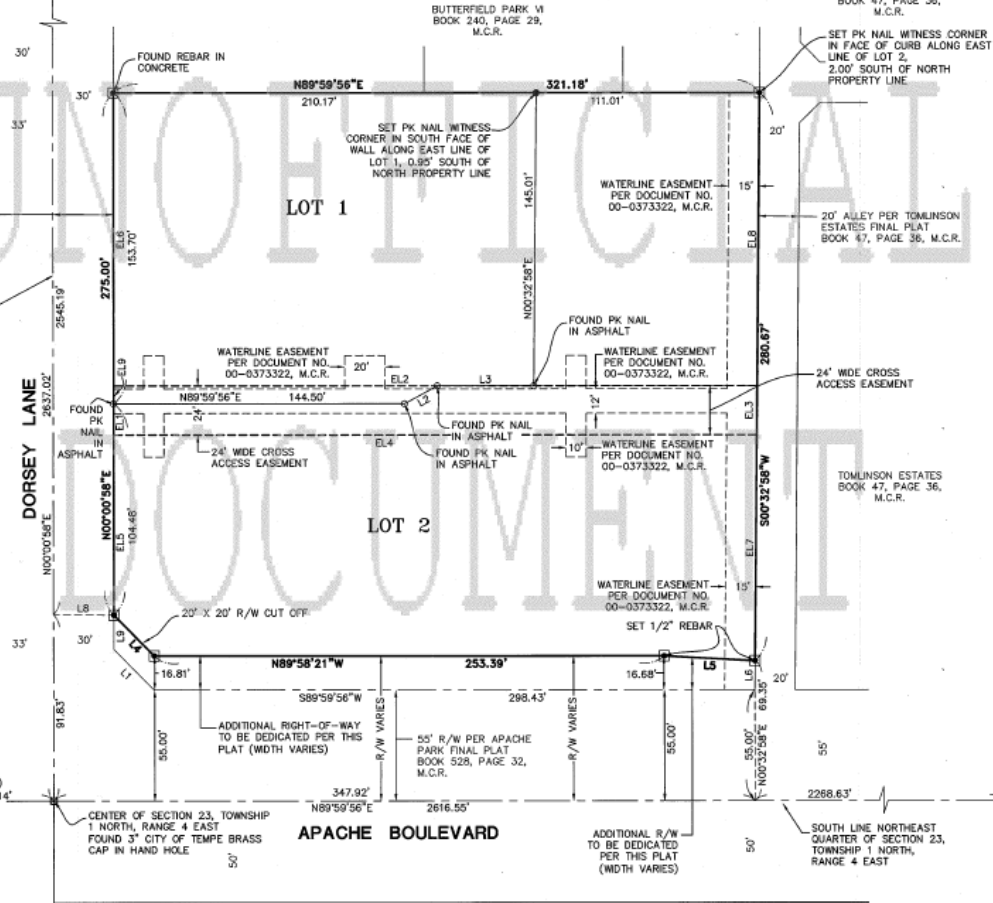
30' R/W PER APACHE  
PARK FINAL PLAT  
BOOK 528, PAGE 32,  
M.C.R.

WEST LINE NORTHEAST  
QUARTER OF SECTION 23,  
TOWNSHIP 1 NORTH,  
RANGE 4 EAST

APN NO. 132-73-138F

WEST QUARTER CORNER  
OF SECTION 23, TOWNSHIP  
1 NORTH, RANGE 4 EAST  
FOUND 3" CITY OF TEMPE  
BRASS CAP IN HAND HOLE

(BASIS OF BEARINGS)  
N89°59'46"W 2673.14'



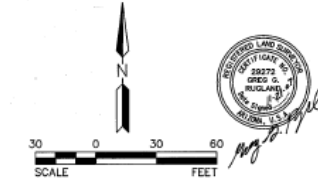
**SITE DATA:**

BOUNDARY AREA	SQ. FT.		ACRES	
	GROSS	NET	GROSS	NET
	94,143	2,1612		

**LOT TABLE:**

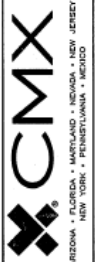
LOT	LOT AREA	
	SQ. FT.	ACRES
LOT 1	31,705	0.7278
LOT 2	62,438	1.4334

- LEGEND**
- RIGHT OF WAY LINE
  - PROPERTY LINE
  - EASEMENT LINE
  - LOT LINE
  - MONUMENT LINE
  - SUBDIVISION CORNER PIN TO BE SET AS NOTED, OR FOUND AS NOTED
  - PROPERTY CORNER PIN TO BE SET AS NOTED
  - PROPERTY CORNER FOUND, AS NOTED
  - FOUND STONE IN HAND HOLE
  - FOUND BRASS CAP IN HAND HOLE
  - MARICOPA COUNTY RECORDER M.C.R.
  - RIGHT-OF-WAY R/W
  - ASSESSOR PARCEL NUMBER APN
  - LINE TABLE NUMBER L3
  - EASEMENT LINE TABLE NUMBER EL3



REC07061  
SBD07034  
DS070171

CHANDLER OFFICE  
3100 W. RAY RD., STE. 201  
CHANDLER, AZ 85226  
PH: (480) 848-1800  
FAX: (480) 848-1918



**DORSEY PARK AND RIDE**  
1306 E. APACHE BLVD  
TEMPE, ARIZONA

SCALE: DATE: AUG 2007  
DESIGNED: CMX DRAWN: CV  
APPROVED: GDR  
REV.  
DWC NO. FP02  
SHT. 2 OF 2

DS070171

SBD07034

REC07061

© Copyright, CMX 2007 - This site document and its contents are the property of CMX. No reliance should be placed on these plans, or any other information, unless it is specifically stated otherwise. Information is subject to change without notice.