

City of Tempe Operation Safe and Sober Assessment

OPERATION SAFE AND SOBER

Prepared by

Presented by
Chief of Police Tom Ryff
January 2014



TABLE OF CONTENTS

Excutive Summary	3
Enforcement Activity	3
Calls for Service	3
Crime	3
Operation Overview	4
Results of Safe and Sober Operations	6
Phase One (Back to School) – August 5-9.....	6
Phase Two – August 15-18 / August 22-25 / August 29-September 1	6
Unlawful Gathering & Nuisance Fines.....	7
Cost.....	8
Safe and Sober Phase Two: A Closer Look at Calls for Service (CFS) and Crime.....	8
Calls for Service	8
ASU Fraternity Houses and Loud Parties	10
Crime	11
Rape.....	12
Aggravated Assault.....	13
Robbery.....	14
Conclusion.....	15
Appendix A – Loud Party Statistics	16

EXECUTIVE SUMMARY

In response to a recent loud party and neighborhood disorder analysis, the Tempe Police Department carried out Operation Safe and Sober over four consecutive weeks from August 5th through September 1st. The intent was to reduce loud party calls for service and to prevent Rape, Robbery, and Aggravated Assault through education and enforcement. This assessment reports on data collected during the months of August and September in an attempt to measure the effects of this initiative. Highlights of this assessment are provided below.

Enforcement Activity

- 5,171 contacts/vehicle stops
- 1,331 total arrests
- 309 DUI arrests
- 2,747 citations
- Issuance of 525 Minors in Possession/Consumption cases

Calls for Service

- Tempe experienced a 10.4% reduction in loud party calls during the study period, with a 17.2% reduction for the month of August alone.
- In October-2013, 211 fewer loud party calls occurred when compared to the typical October over the previous four years.
 - The Loud Party Corridor—an area just east of ASU campus—experienced 38 fewer (-14.2%) loud party calls compared to the same time period in 2012. This reduction accounted for 52% of the City's total reduction in loud party calls.
 - This past Fall 2013 semester loud parties continued to occur near fraternities, albeit less pronounced.

Crime

- Citywide Part I crime increased by 2% (1346 to 1370) during the study period.
- Violent crime— Rape, Robbery and Aggravated Assault—was reduced by 10% (141 to 124) when compared to 2012.
 - In the corridor alone, Part I crime went down 8%.
 - The majority of that reduction can be attributed to violent crime (-28%).
 - This decrease is a result of robberies being curtailed 76% (17 to 4) in the targeted area of the operation.
- Street-Jump Robberies went from 30 to 15 in the City and from 10 to 2 in the corridor. This type of robbery targets individuals in a public place (i.e., street, alley, light rail platform, bus stop), and it was a point of emphasis for this operation.
- Unfortunately, this initiative did not impact Sexual or Aggravated Assaults.

The Department will continue to monitor loud party calls and crime, and assess the extent to which operations like Safe and Sober have a sustained impact. It appears that addressing the loud party issue will require a sustained ongoing effort by the Department in the months and years to come.

OPERATION OVERVIEW

An in-depth analysis was conducted in the summer of 2013 to assess the impact of loud party calls for service on the residents of Tempe. Findings indicated that approximately 33% of loud party calls in 2012 occurred within what was referred to as the “Loud Party Corridor.”¹ Additionally, loud party calls were found to be correlated not only with other nuisance calls, but also with violent crime. The resulting report² was published and provided to City Council in August 2013 and an operational plan, “Safe and Sober,” was developed to address calls for service and crime in the corridor in conjunction with regular back to school initiatives.

The Safe and Sober Operation was carried out during August and September 2013 over four (4) consecutive weeks from August 5th through September 1st. Several tactics remained in place through September 15th. This assessment recap focuses on data collected during the months of August and September in an attempt to measure the ongoing effect of this initiative. The first phase, Back-to-School—which occurred during August 5-9—focused on driving and pedestrian safety around elementary and middle schools within the city, with a goal of enforcing traffic and pedestrian violations near Tempe schools. The second phase of the initiative targeted weekend loud party, neighborhood disorder, and quality of life concerns, with a goal of reducing associated calls and select violent crime.

Funding was obtained primarily through grants awarded by the Governor’s Office of Highway Safety (GOHS).

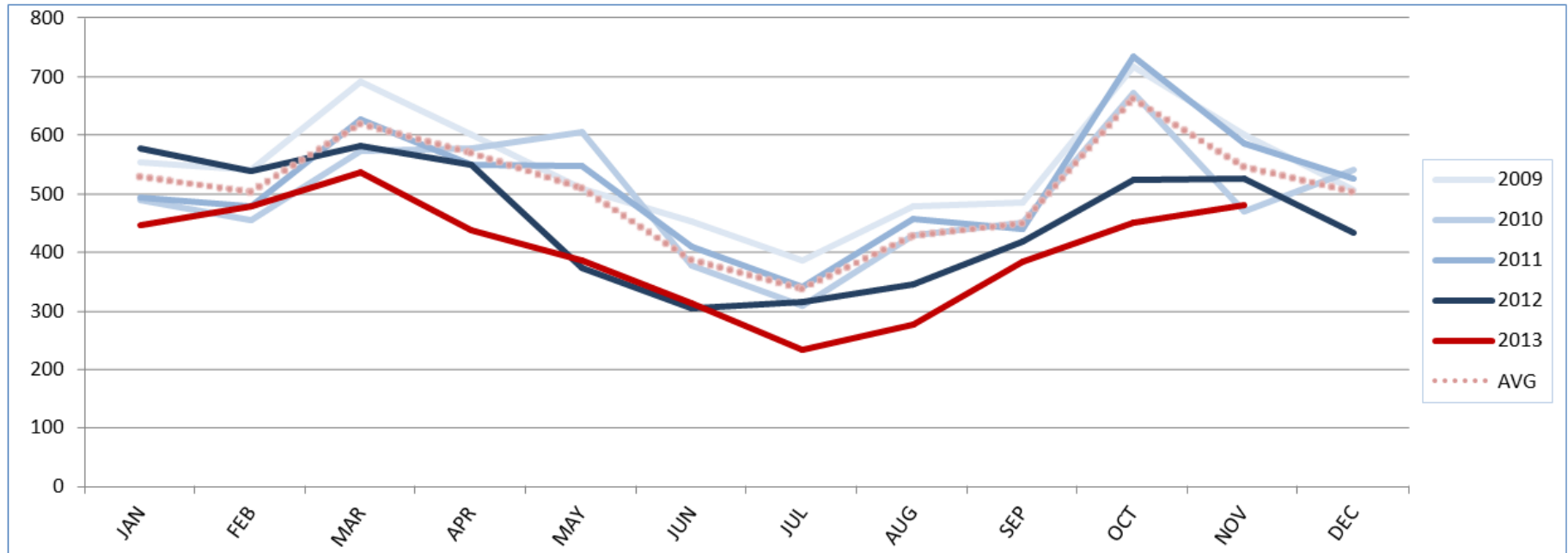
The following figure shows the long term Loud Party trends in the City of Tempe. The efforts of the Tempe Police Department over the past year have significantly impacted the number of loud party calls for service in comparison to the previous five-year pattern. Most noteworthy is the fact that loud party calls, on average, have been reduced by 100 per month from the previous years. In October-2013, the citizens of Tempe experienced over 200 fewer loud party calls than they typically did during the previous four years. As that number diminishes in November, it appears that addressing the loud party issue will require a sustained ongoing effort by the Department in the months and years to come.

¹ The area bound by University Dr to Broadway Rd and Rural Rd to Price Rd.

² “City of Tempe Loud Party and Neighborhood Disorder Report,” August 2013

Loud Party Calls*

2009 thru 2013 (YTD)



Loud Party CFS**	JAN	FEB	MAR	APR	MAY	JUN	JUL	AUG	SEP	OCT	NOV	DEC
2009	554	542	693	603	510	454	386	480	486	718	603	508
2010	491	455	575	578	607	379	309	429	452	674	472	542
2011	494	479	629	550	549	411	342	459	441	735	587	528
2012	579	539	584	550	375	306	315	347	420	524	527	435
2013	448	479	537	439	386	314	234	276	384	452	481	
Previous 4-Yr Average	530	504	620	570	510	388	338	429	450	663	547	503
Current Below Avg	82	25	83	131	124	74	104	153	66	***211	57	

*Standard deviation is a statistical technique that measures the distance or amount a given value is from the mean or average value. For our purposes here, those values in red are out of the ordinary or higher than normal compared to an average month for loud party counts.

**Red Cells represent Loud Party Calls greater than 1 Standard Deviation

***October 2013 had 211 fewer LP Calls than the previous 4-year average

On average, 2013 experienced 100 fewer LP calls per month than those months in previous years.

RESULTS OF SAFE AND SOBER OPERATIONS

Phase One (Back to School) – August 5-9

Because pedestrian and driver awareness is low at the start of a school year, phase one was implemented to remind drivers in neighborhoods and around schools to be aware that school is back in session and the safety of our children is paramount.

Focus included:

- Speed enforcement
- School zone enforcement
- Child safety seat enforcement (CAPP)
- Seatbelt enforcement
- Pedestrian violations
- Impaired driving due to DUI and drug impairment (illicit and medical)
- Parking violations
- Any criminal activity encountered during officer contacts

Enforcement activity resulted in:

- 506 speeding citations
- 711 other traffic/pedestrian violations

Phase Two – August 15-18 / August 22-25 / August 29-September 1

Because quality of life in Tempe is impacted by crimes related to underage drinking and associated disorder calls, focus in the second phase was placed on the nights heavily inundated with loud party calls, i.e. Thursday, Friday, and Saturday nights. This phase also incorporated educating the community about the risks associated with hosting and attending loud parties. The primary concern was alcohol and drug-related incidents that perpetuate around large party events and the subsequent crime and victimization that can result from poor judgment due to alcohol and drug consumption - specifically Rape, Street Robberies, and Aggravated Assault.

Focus included:

- Loud party calls
- DUI arrests
- Liquor violations
- Outstanding warrant
- Other associated quality of life calls

Enforcement activity resulted in:

- 5,171 contacts/vehicle stops
- 309 DUI arrests
- Issuance of 525 Minors in Possession/Consumption cases
- 2,747 citations
- 1,331 total arrests

Unlawful Gathering & Nuisance Fines

The City passed a new ordinance this past year to address shortcomings in the Police Department’s ability to serve notice of loud parties and increased the penalties to provide an adequate deterrent to loud parties. These new tools were put into effect during Operation Safe and Sober.

Unlawful gatherings are social host events where individuals over 21 years of age are providing alcohol to individuals who are under the age of 21. The first offense allows for a diversion program in lieu of a \$250 fine. All other subsequent violations are a \$250 fine.

Nuisance incidents are events where individuals are disturbed by noise, illegal parking or loud parties. There are no age restrictions on a nuisance violation and any host, resident, party goer or other participant can be assessed a fee. The first offense fee is \$250; the second, \$1,000; and the third, \$1,500—as it applies to subsequent notices. The new ordinance allows the police to post the citation at the residence rather than to a person. Aggravating circumstances include Minors in Possession, Minors in Consumption, and where weapons or drugs are present. Table 1 offers some preliminary figures that benchmark the extent to which this new ordinance was put to use.

**Table 1: Loud Party Ordinance Notices
Unlawful Gathering/Social Host**

	Notices Issued		Amount Billed
August	16		\$4,000.00
September	8		\$2,000.00
Nuisance/Loud Party³			
	Total Notices Issued	# of Notices Issued to Unknown RP	Amount Billed
August	70	14	\$17,750.00
September	112	21	\$27,815.00

³ Some Nuisance notices have not been billed due to lack of responsible party information on the citation. This is due to refuse to answer situations in which the notice was placed on the property and not served in person. The Crime Prevention Unit is following up with apartment complexes to identify responsible parties for these notices so they can be billed accordingly.

Cost

Over two thousand hours of overtime (see Table 2) were worked during the operation. Nearly 97% of the operation was paid for by grant funds awarded by the Governor's Office of Highway Safety. The remaining amount was paid from the Police Department's Operating Budget.

Table 2: Overtime Funds

Program	OT Hours	Cost	Funded by GOHS
Back-to-School	121.0	\$ 3,319.62	\$ 3,290.71
Safe and Sober	1,892.5	\$ 143,356.23	\$ 138,463.93
Total	2,013.5	\$ 146,675.85	\$ 141,754.64

SAFE AND SOBER PHASE TWO: A CLOSER LOOK AT CALLS FOR SERVICE (CFS) AND CRIME

The remainder of this report focuses on the impact of Phase Two of Safe and Sober by examining its effect on calls for service and select violent crime.

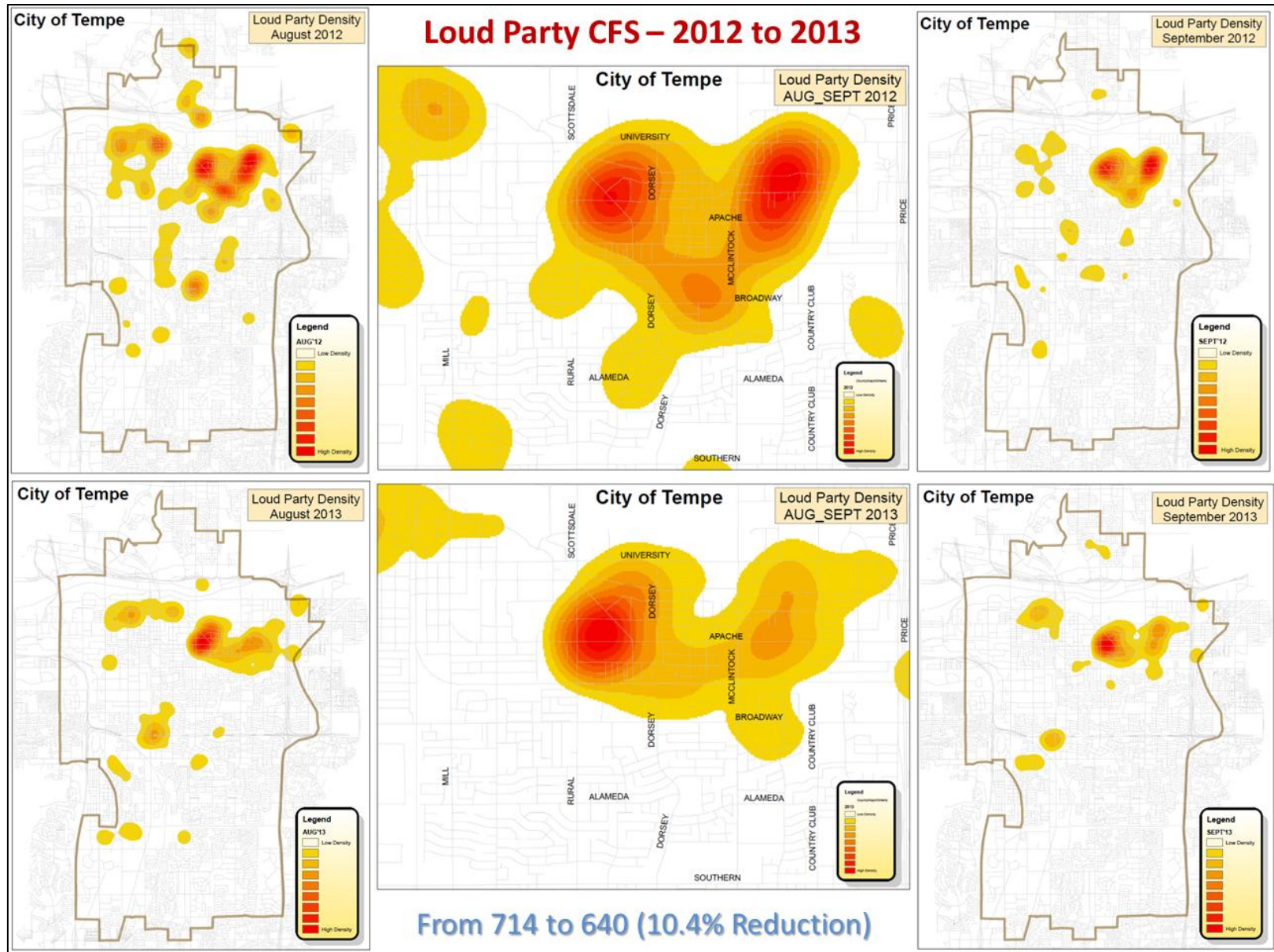
Calls for Service

The city experienced a 10.4% (74) reduction in loud party calls during the operation compared to the same time frame in 2012, with a 17.2% reduction for the month of August alone. One major finding was the manner in which officers proactively sought out and addressed loud parties. Four times more parties were averted by an officer before a party got out of hand and a citizen called the police for assistance. In August and September of 2013, 1 in 14 loud party calls were identified by an officer on-view, compared to only 1 out of 60 loud party calls being proactively identified during the same 8 weeks in 2012. Appendix A offers greater detail of loud party statistics.

As officers aggressively focused on loud parties within the corridor, this area experienced 38 fewer (-14.2%) loud party calls during the operation compared to the same time period in 2012. This reduction accounted for 52% (38 of 74) of the City's total reduction in loud party calls during this timeframe. More specifically, focusing on underage drinking and minors in possession in the most prevalent area, along with media and educational efforts, achieved double digit reductions both within the corridor and the city as a whole.

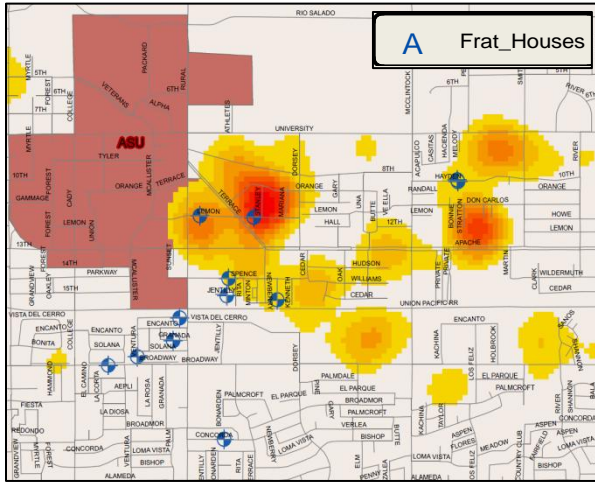
The following Loud Party CFS maps depict the spatial distribution between 2012 and 2013 for both August and September (see Graph 1). These charts clearly show that the dispersion and extent of loud parties were diminished in 2013. Graph 1 shows that while loud parties were more broadly dispersed throughout the City in 2012, a more stark concentration around the Apache and Rural corner to Dorsey and University emerged in 2013. It would appear that the loud party issue was more acutely contained as a result of the Safe and Sober Operation.

Graph 1: Spatial Comparison of Loud Party Density - 2012 to 2013



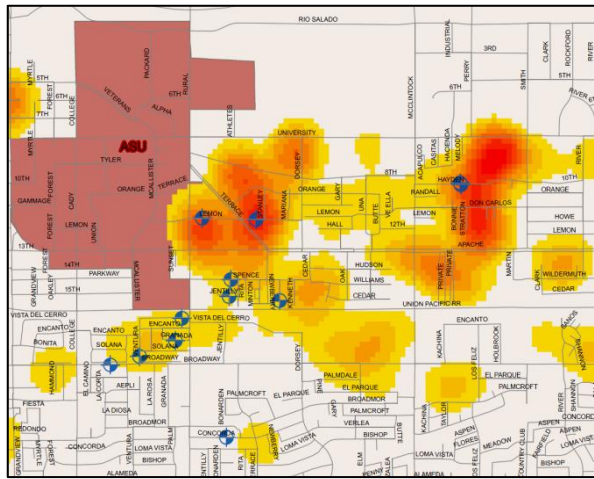
ASU Fraternity Houses and Loud Parties

Graph 2: Loud Party Corridor and Fraternities
Fall-2011

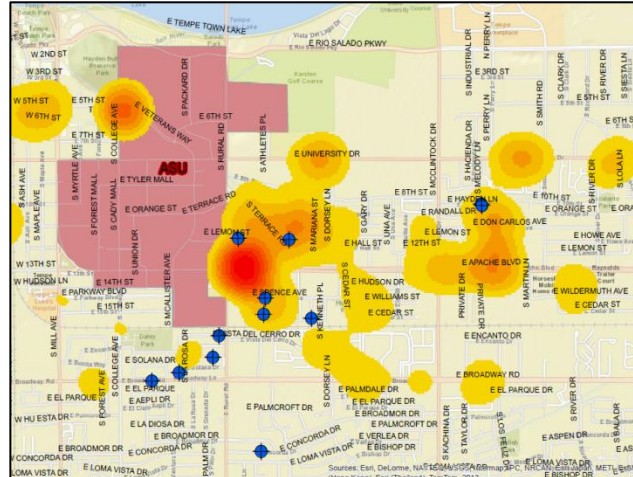


One particular concern for the City has been the emerging pattern of loud parties in neighborhoods that are now home to ASU Fraternities. In the past, loud party calls have consistently migrated in conjunction with the re-location of fraternity houses. The series of maps included in Graph 2 display the hotspot analysis showing the density of loud party calls overlaid with relocated fraternity housing. This past Fall 2013 semester loud parties continued to occur near fraternities, but since the Safe and Sober Operation, this overlap is less pronounced.

Fall-2012



Fall-2013



Crime

A primary objective for the Safe and Sober Operation was to reduce Rape, Robberies, and Aggravated Assaults. The following analysis compared Part I Crime statistics⁴ in 2013 to the same timeframe in 2012.

Table 3 shows that overall citywide Part I crime increased by 2% (1346 to 1370) during the study period. In regard to the crimes that were specifically targeted during the operation— Rape, Robbery and Aggravated Assault—the city experienced a 10% (141 to 124) reduction in violent crime in 2013 when compared to 2012.

Table 3: Select Crime Comparison During the Study Period

Select Violent Crime	2012	2013	% Change
	Aug/Sept	Aug/Sept	
Rape	6	8	33%
Robbery	47	27	-43%
Street-jump Robbery ⁵	30	15	-50%
Aggravated Assaults	85	89	5%
Total Select Violent Crime	138	124	-10%
Citywide Part I Crime	1,346	1,370	2%
Select Violent Crime In Corridor	2012	2013	% Change
	Aug/Sept	Aug/Sept	
Rape	1	1	0%
Robbery	17	4	-76%
Street-jump Robbery	10	2	-80%
Aggravated Assaults	21	23	10%
Total Select Violent Crime	39	28	-28%
Corridor Part I Crime	277	254	-8%

More specifically in the corridor, Part I crime went down 8%. The majority of that reduction can be attributed to the reduction in violent crime (-28%). This decrease is a result of robberies being curtailed 76% (17 to 4) in the targeted area of the operation. Street Jump robberies, a crime specifically targeted during the operation, went from 30 to 15 in the City and from 10 to 2 in the corridor when compared to the same timeframe in 2012.

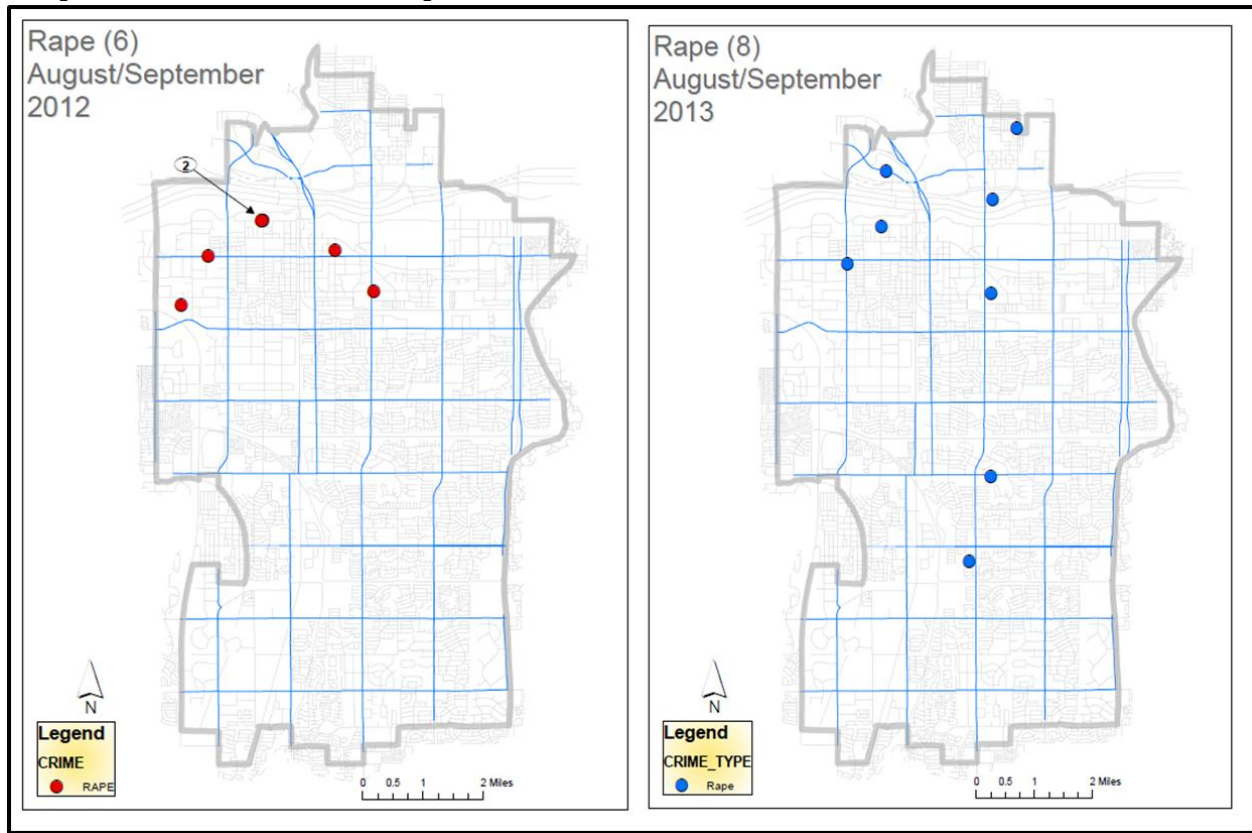
⁴ This analysis is based upon occurred date, not reported date. It also focuses on the number of incidents, rather than number of victims. Therefore, note that these figures do not reflect official UCR statistics, which follow different Federal guidelines.

⁵ Street Jump Robbery target individuals in a public place (i.e., street, alley, light rail platform, bus stop) versus commercial robberies which target banks, convenient or liquor stores and the like.

Rape

There was an increase of two Rape incidents (6 to 8) during the study period. Further spatial analysis demonstrated that Rape incidents tend to occur in the northern part of Tempe, albeit not completely (see Graph 3 below). Without controlling for other factors, it does not appear that the operation had a direct impact on occurrences of Rape.

Graph 3: Sexual Assault Comparison

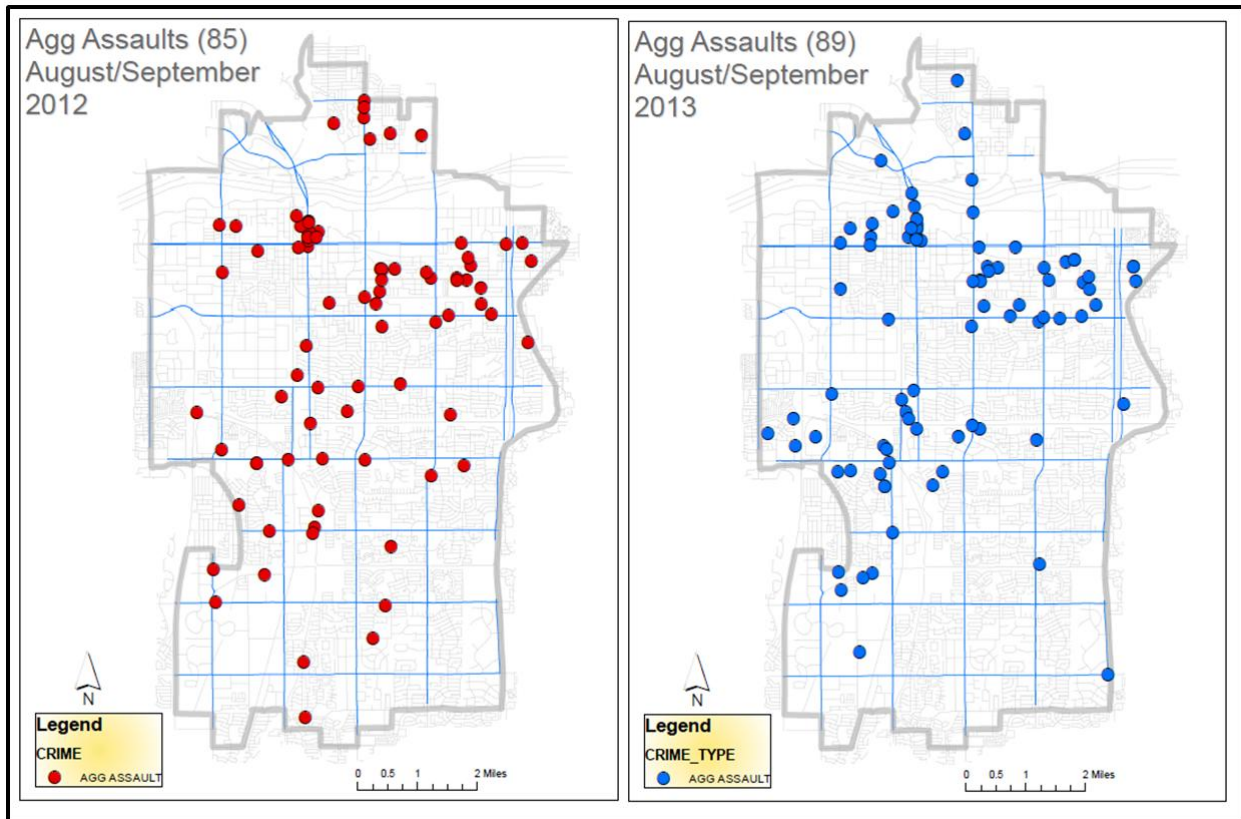


Aggravated Assault

Aggravated Assault incidents increased by 5% (85 to 89) from August/September 2013 when compared to the same months in 2012. This analysis also examined Aggravated Assault cases which occurred at a residence as opposed to a public place, and those involving domestic violence. Aggravated Assault incidents taking place in a residence increased by only 2% from 2012 to 2013 during the targeted months; and virtually made up the same percentage of all Aggravated Assaults (50% of 2013 incidents and 49% of 2012 incidents). The percentage of Aggravated Assault incidents involving domestic violence remained relatively the same as well, at 40% in 2013 compared to 41% in 2012 within the study period (a 2% reduction).

The geographic distribution of Aggravated Assaults appears to be randomly dispersed throughout the city during August/September in both years, implying the operation had little to no effect on Aggravated Assaults. Graph 4 shows this random dispersion of Aggravated Assaults for the study period during both years.

Graph 4: Aggravated Assault Comparison

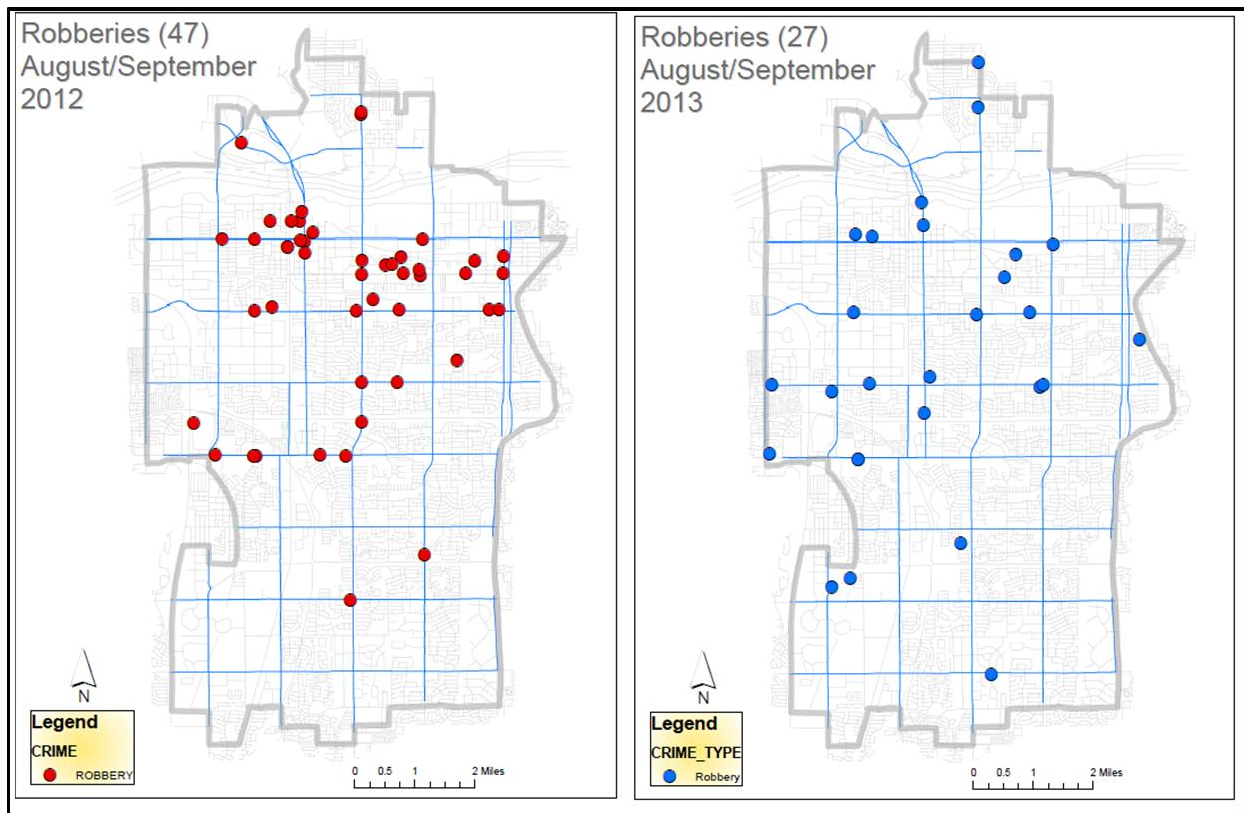


Robbery

In contrast, the City of Tempe experienced a 43% decrease in Robberies (47 to 27) in the 2013 months compared to those in 2012. More specifically, there was a 50% reduction in Street-Jump Robberies (30 to 15)—a crime targeted for reduction during the operation.

The Robbery Comparison map (Graph 5) depicts the operation's greatest impact spatially, where the city experienced a significant drop in Robbery in the north. In 2012, 75% of all Robberies occurred north of Broadway Road (35 out of 47), with a concentration in the downtown area and within the Loud Party Corridor. In 2013, the number of Robberies north of Broadway Road dropped to 12 (a 66% reduction); with only two occurring in the downtown and four in the corridor. This indicates a stark shift both in the number and the location of Robberies as a result of the Safe and Sober Operation.

Graph 5: Robbery Comparison



CONCLUSION

In conclusion, while it is very difficult to ascertain the absolute impact of an operation such as Safe and Sober, the Tempe Police Department can celebrate the overall reduction in loud party calls and the substantial reduction in Robberies during the initiative. Citywide loud party calls were reduced by 10.4% compared to the prior year. Further, there appears to be a lasting effect as October 2013 data shows 211 (-31.8%) fewer loud party calls than the previous four year average for that month. In addition, robbery numbers were significantly reduced and dispersed compared to 2012. Unfortunately, it does not appear that an operation addressing loud parties—as well as alcohol and drug consumption—reduces Sexual or Aggravated Assaults, at least in the short term. Other innovative approaches must be tested and assessed in the future to determine more effective strategies for those behaviors. The Department will continue to monitor loud party calls for service and crime (i.e., rape, robbery and aggravated assault) and assess the extent to which operations like Safe and Sober have a sustained impact.

Appendix A – LOUD PARTY STATISTICS

Week by Week Breakdown with Self-Initiated Calls for Service

Comparison of Loud Party Calls in AUG & SEP between 2012 and 2013						Metric		
TOTAL 2012	714			TOTAL 2013	640		-10.4	% Change
AUG'12	338			AUG'13	280		-17.2	% Change
SEP'12	376			SEP'13	360		-4.3	% Change
AUG'12				AUG'13				
Week1	66			Week1	50		-24.2	% Change
	Self-Init	0	0 in 66		Self-Init	2	1 in 25	Ratio of Self-Init LP CFS to Citizen Generated
N-S	35	31	53%	N-S	27	23	54%	% of LP Calls in the North District
Week2	81			Week2	63		-22.2	% Change
	Self-Init	6	1 in 14		Self-Init	1	1 in 63	Ratio of Self-Init LP CFS to Citizen Generated
N-S	40	41	49%	N-S	40	23	63%	% of LP Calls in the North District
Week3	117			Week3	99		-15.4	% Change
	Self-Init	1	1 in 117		Self-Init	6	1 in 17	Ratio of Self-Init LP CFS to Citizen Generated
N-S	64	53	55%	N-S	63	36	64%	% of LP Calls in the North District
Week4	74			Week4	68		-8.1	% Change
	Self-Init	0	0 in 74		Self-Init	8	1 in 11	Ratio of Self-Init LP CFS to Citizen Generated
N-S	45	29	61%	N-S	43	43	63%	% of LP Calls in the North District
SEP'12				SEP'13				
Week1	107			Week1	75		-29.9	% Change
	Self-Init	1	1 in 107		Self-Init	7	1 in 11	Ratio of Self-Init LP CFS to Citizen Generated
N-S	64	43	60%	N-S	49	26	65%	% of LP Calls in the North District
Week2	95			Week2	86		-9.5	% Change
	Self-Init	2	1 in 48		Self-Init	9	1 in 10	Ratio of Self-Init LP CFS to Citizen Generated
N-S	44	51	46%	N-S	59	27	69%	% of LP Calls in the North District
Week3	88			Week3	81		-8.0	% Change
	Self-Init	1	1 in 88		Self-Init	5	1 in 16	Ratio of Self-Init LP CFS to Citizen Generated
N-S	51	37	58%	N-S	60	21	74%	% of LP Calls in the North District
Week4	86			Week4	118		37.2	% Change
	Self-Init	1	1 in 86		Self-Init	7	1 in 17	Ratio of Self-Init LP CFS to Citizen Generated
N-S	46	40	53%	N-S	80	38	68%	% of LP Calls in the North District